

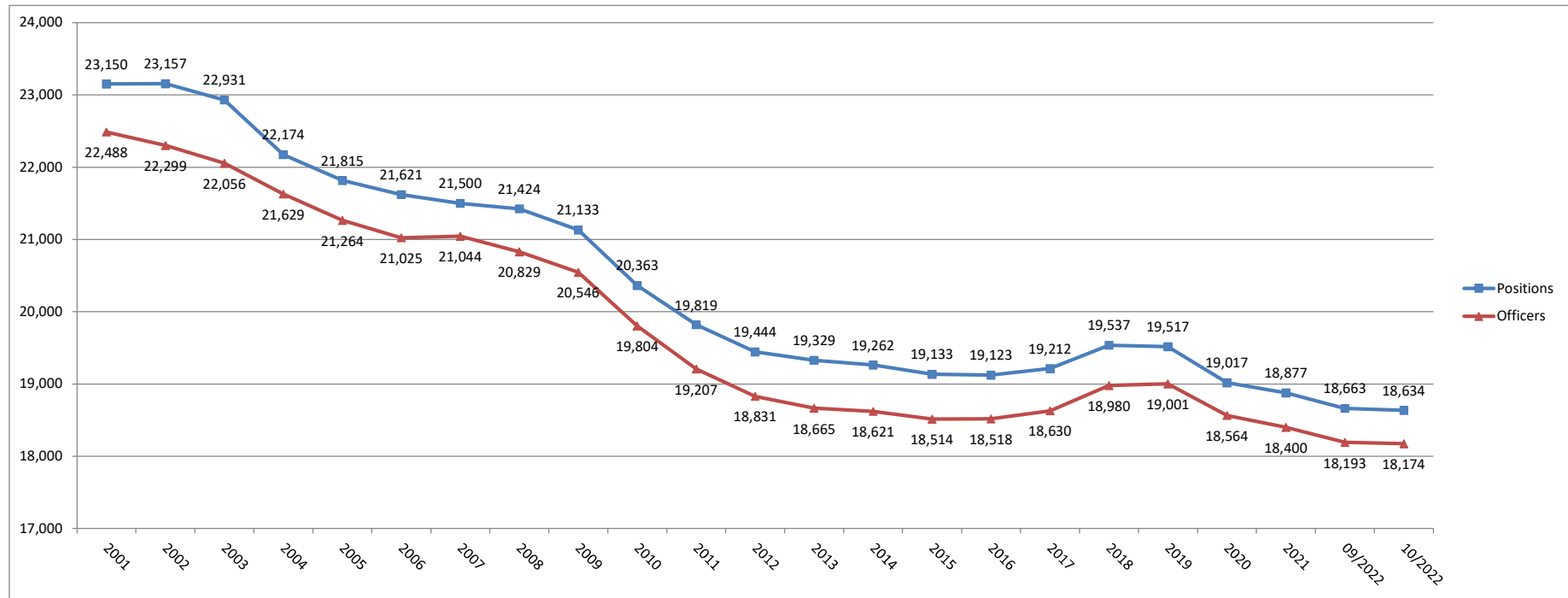
**Michigan Commission on Law Enforcement Standards  
Law Enforcement Population Trends - October 2022**

**Law Enforcement Agencies**

Year	2001	2002	2003	2004	2005	2006	2007	2008	2009	2010	2011	2012	2013	2014	2015	2016	2017	2018	2019	2020	2021	09/2022	10/2022	1 Month	Overall
Agencies	613	613	615	610	609	608	609	608	611	609	606	599	597	597	592	588	585	584	581	578	583	580	580	0	-33

**Law Enforcement Positions and Officers<sup>1</sup>**

Year	2001	2002	2003	2004	2005	2006	2007	2008	2009	2010	2011	2012	2013	2014	2015	2016	2017	2018	2019	2020	2021	09/2022	10/2022	1 Month	Overall
Positions	23,150	23,157	22,931	22,174	21,815	21,621	21,500	21,424	21,133	20,363	19,819	19,444	19,329	19,262	19,133	19,123	19,212	19,537	19,517	19,017	18,877	18,663	18,634	-29	-4,516
Officers	22,488	22,299	22,056	21,629	21,264	21,025	21,044	20,829	20,546	19,804	19,207	18,831	18,665	18,621	18,514	18,518	18,630	18,980	19,001	18,564	18,400	18,193	18,174	-19	-4,314



<sup>1</sup> Positions, whether full or part time, include officers who may have multiple law enforcement employment relationships, i.e. one officer employed at two agencies counts as two positions. Historical data (2001-2021) is a snapshot of law enforcement positions taken on 12/31 of each calendar year. The 2022 data is current as of 10/31/2022.