

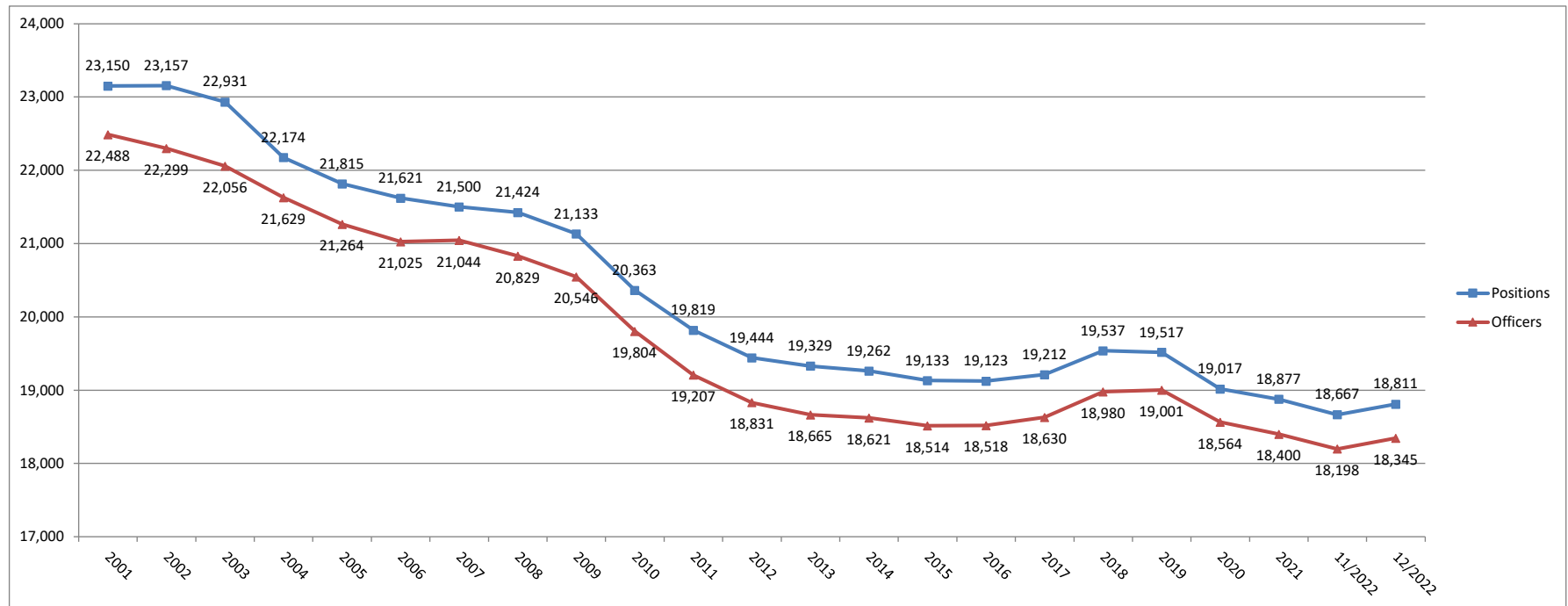
**Michigan Commission on Law Enforcement Standards
Law Enforcement Population Trends - December 2022**

Law Enforcement Agencies

| Year | 2001 | 2002 | 2003 | 2004 | 2005 | 2006 | 2007 | 2008 | 2009 | 2010 | 2011 | 2012 | 2013 | 2014 | 2015 | 2016 | 2017 | 2018 | 2019 | 2020 | 2021 | 11/2022 | 12/2022 | 1 Month | Overall |
|----------|------|------|------|------|------|------|------|------|------|------|------|------|------|------|------|------|------|------|------|------|------|---------|---------|---------|---------|
| Agencies | 613 | 613 | 615 | 610 | 609 | 608 | 609 | 608 | 611 | 609 | 606 | 599 | 597 | 597 | 592 | 588 | 585 | 584 | 581 | 578 | 583 | 579 | 579 | 0 | -34 |

Law Enforcement Positions and Officers¹

| Year | 2001 | 2002 | 2003 | 2004 | 2005 | 2006 | 2007 | 2008 | 2009 | 2010 | 2011 | 2012 | 2013 | 2014 | 2015 | 2016 | 2017 | 2018 | 2019 | 2020 | 2021 | 11/2022 | 12/2022 | 1 Month | Overall |
|-----------|--------|--------|--------|--------|--------|--------|--------|--------|--------|--------|--------|--------|--------|--------|--------|--------|--------|--------|--------|--------|--------|---------|---------|---------|---------|
| Positions | 23,150 | 23,157 | 22,931 | 22,174 | 21,815 | 21,621 | 21,500 | 21,424 | 21,133 | 20,363 | 19,819 | 19,444 | 19,329 | 19,262 | 19,133 | 19,123 | 19,212 | 19,537 | 19,517 | 19,017 | 18,877 | 18,667 | 18,811 | 144 | -4,339 |
| Officers | 22,488 | 22,299 | 22,056 | 21,629 | 21,264 | 21,025 | 21,044 | 20,829 | 20,546 | 19,804 | 19,207 | 18,831 | 18,665 | 18,621 | 18,514 | 18,518 | 18,630 | 18,980 | 19,001 | 18,564 | 18,400 | 18,198 | 18,345 | 147 | -4,143 |



¹ Positions, whether full or part time, include officers who may have multiple law enforcement employment relationships, i.e. one officer employed at two agencies counts as two positions. Historical data (2001-2021) is a snapshot of law enforcement positions taken on 12/31 of each calendar year. The 2022 data is current as of 12/31/2022.