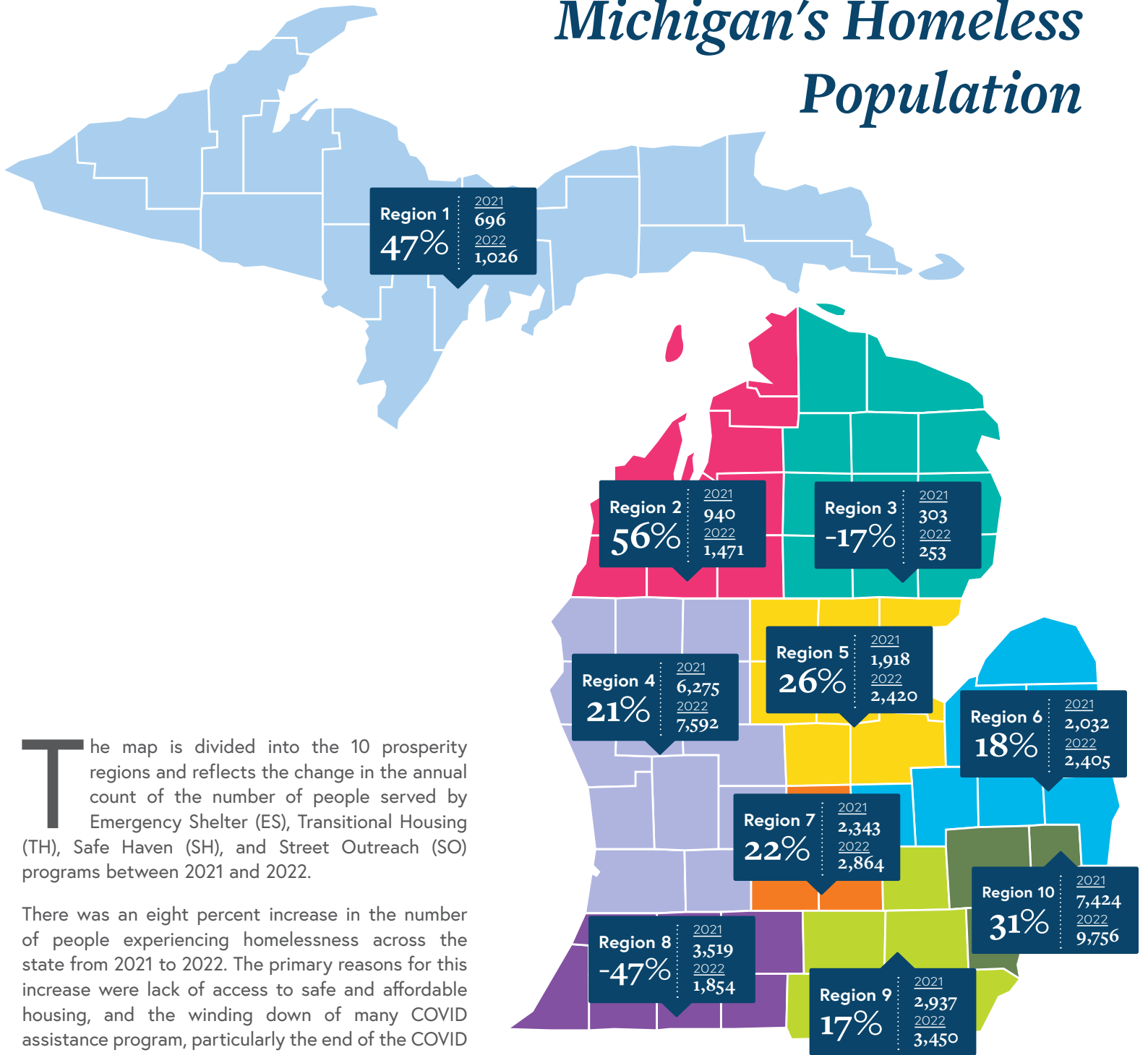


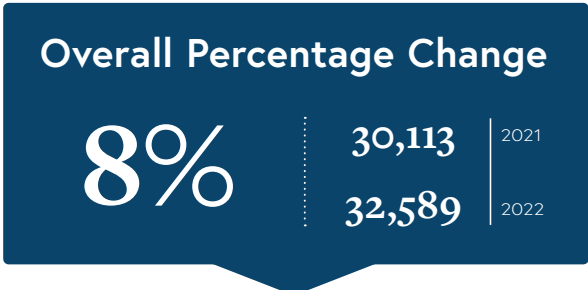
Michigan's Homeless Population



The map is divided into the 10 prosperity regions and reflects the change in the annual count of the number of people served by Emergency Shelter (ES), Transitional Housing (TH), Safe Haven (SH), and Street Outreach (SO) programs between 2021 and 2022.

There was an eight percent increase in the number of people experiencing homelessness across the state from 2021 to 2022. The primary reasons for this increase were lack of access to safe and affordable housing, and the winding down of many COVID assistance program, particularly the end of the COVID Emergency Rental Assistance (CERA) program, which offered assistance to many renters at risk of losing their home.

The percentages indicate the percent change (increase or decrease) from 2021 to 2022. Most regions saw an increase in the number of people experiencing homelessness. Regions one, two, four, five, seven, and ten had increases greater than twenty percent. However, regions three and eight experienced declines in the number of people experiencing homelessness.



Homeless Demographics Summary

PERSONS EXPERIENCING HOMELESSNESS (CY 2022)

Homeless Client Characteristics (HMIS Data Only)	Literally Homeless	1st Time Homeless	Veterans	Adult Only	Adults with Children	Youth 18-24	Adults 25-54	Seniors 55+
Unique Number of Clients for 2021*	30,113	15,882	1,829	19,040	10,441	3,088	14,418	5,369
Unique Number of Clients for 2022*	32,589	16,668	1,784	20,438	11,001	3,573	15,213	5,637
Change from Prior Year	8%	5%	-2%	7%	5%	16%	6%	5%
Number of Adults	24,315	12,903	1,780	20,438	4,133	3,573	15,213	5,637
Number of Children	7,934	3,756	N/A	N/A	6,872	N/A	N/A	N/A
Number of Households	24,133	12,663	1,769	19,882	3,264	3,189	14,340	5,509
Gender								
Female	42%	41%	9%	32%	60%	51%	41%	27%
Male	57%	58%	90%	67%	40%	45%	58%	73%
A gender other than singularly female or male (e.g. non-binary, genderfluid, agender, culturally specific gender)	<1%	<1%	<1%	<1%	<1%	1%	<1%	<1%
Transgender	<1%	<1%	<1%	<1%	<1%	2%	<1%	<1%
Questioning	<1%	<1%	<1%	<1%	<1%	<1%	<1%	<1%
Race								
American Indian or Alaska Native	1%	1%	1%	1%	<1%	1%	1%	1%
Asian	1%	<1%	<1%	1%	2%	2%	1%	<1%
Black or African American	46%	46%	42%	42%	52%	50%	40%	46%
Native Hawaiian or Other Pacific Islander	<1%	<1%	<1%	<1%	<1%	<1%	<1%	<1%
White	43%	44%	50%	49%	34%	37%	50%	46%
Multi-racial	8%	8%	6%	7%	11%	9%	7%	5%
Ethnicity								
Non-Hispanic/Non-Latino	92%	92%	96%	93%	91%	90%	93%	96%
Hispanic/Latino	7%	7%	4%	6%	8%	9%	6%	4%
Indefinite and Impairing Disabilities								
At least one disability	28%	27%	55%	39%	11%	24%	34%	49%
Types of disabilities reported:								
Physical disability	12%	11%	33%	17%	3%	3%	13%	30%
Developmental disability	4%	4%	2%	5%	3%	6%	5%	4%
Chronic health condition	7%	7%	17%	10%	2%	3%	8%	18%
HIV/AIDS	<1%	<1%	<1%	<1%	<1%	<1%	<1%	1%
Mental health	19%	16%	32%	26%	6%	19%	25%	27%
Substance use	6%	5%	17%	9%	<1%	3%	8%	12%

* The number of unique clients in each category is only from clients that were assisted in emergency shelter, safe haven, street outreach, and transitional housing projects. Other projects types were not included so that the State of Michigan's homeless numbers align better to federal reporting standards.

The data in these tables comes from the MSHMIS Data Warehouse Project which pulls data from Michigan's Homeless Management Information System. This data represents people who received services in Emergency Shelter, Safe Haven, Transitional Housing and Street Outreach during 2022.

