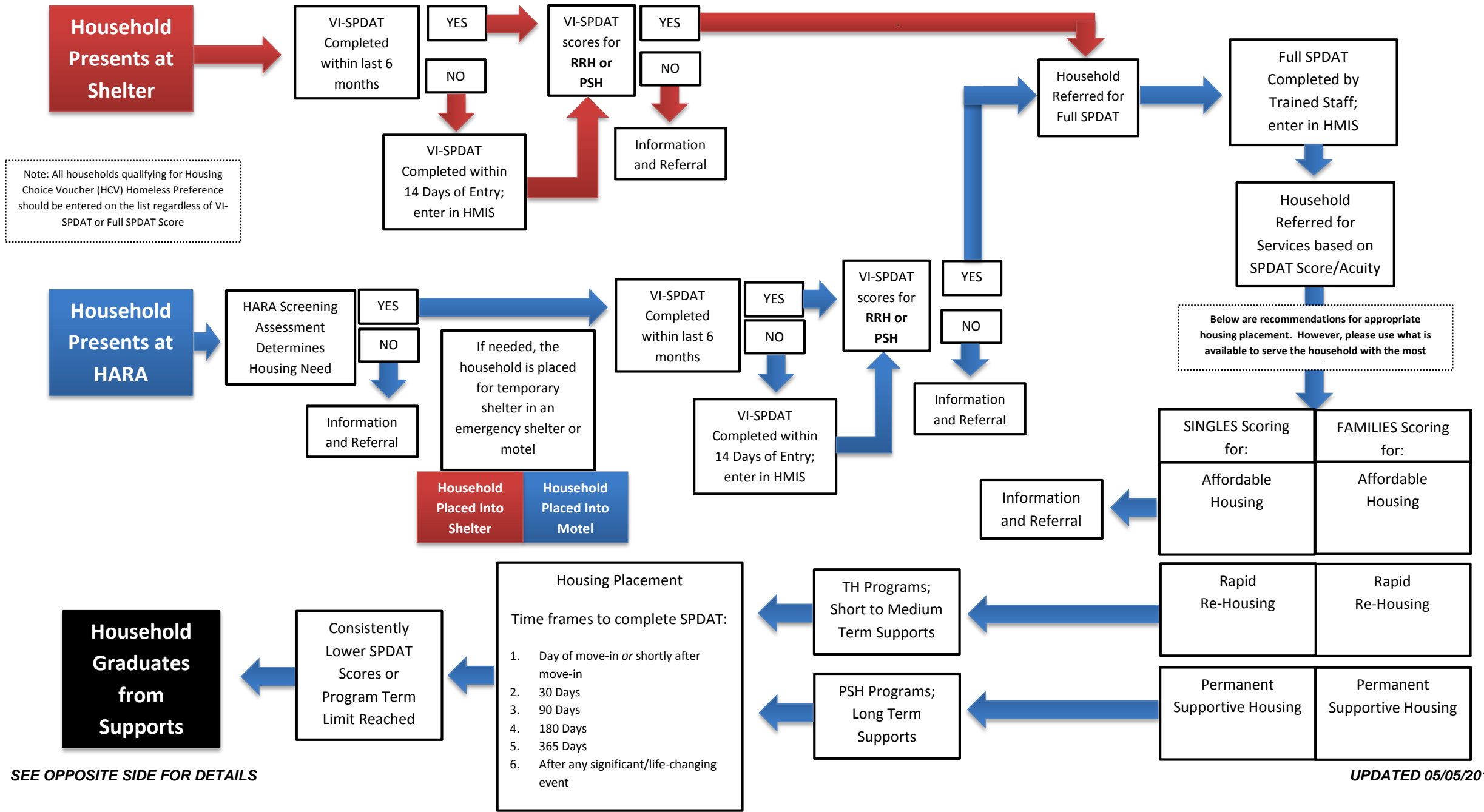


**VI-SPDAT and Full SPDAT Workflow**



## VI-SPDAT and Full SPDAT Workflow

### Introduction

The VI-SPDAT and Full SPDAT Workflow illustrates the statewide coordinated entry and assessment process to prioritize housing assistance for those most in need through use of the Service Prioritization Decision Assistance Tool (SPDAT). Local communities should use the workflow to guide their service system design.

### What's the difference between the VI-SPDAT and Full SPDAT and the various versions?

- The VI-SPDAT is a pre-screen that looks for the presence of an issue and determines who should receive the Full SPDAT
- The SPDAT or Full SPDAT looks at the depth (acuity) of an issue and determines the appropriate type of service intervention
- The VI-SPDAT and Full SPDAT are available in a version for singles and for families. Singles receive the VI-SPDAT and Full SPDAT, Families use the F-VI-SPDAT, F-SPDAT  
*Note: The workflow only references VI-SPDAT and Full SPDAT but providers should use the appropriate version for the type of households being served*

### Who does receive the VI-SPDAT and Full SPDAT assessment?

- Singles/families that meet criteria for Category 1 – Literally Homeless of the HUD Homeless Definition **AND**
- Persons who are 16 years or older (only if being compared to another youth program)

### Who does NOT receive the VI-SPDAT or Full SPDAT assessment?

- Singles/families that do not meet the criteria for Category 1 – Literally Homeless of the HUD Homeless Definition, i.e. Prevention **OR**
- Persons that are under the age of 16
- If financial resources are not available, the Full SPDAT should not be provided. Clients should be given referrals, etc.

### When does data get entered on HMIS and how are scores shared?

Both VI-SPDAT and Full SPDAT data are required to be entered on HMIS and should be entered as soon as possible to facilitate coordination of service delivery. While real-time data entry is not required, it is ***strongly encouraged***.

### How does this impact entering households on the Housing Choice Voucher (HCV) Homeless Preference List?

If a household is eligible for the HCV Homeless Preference List, then they should be entered regardless of VI-SPDAT and/or Full SPDAT score.

For questions or comments, please contact:

Amber Troupe (DHHS) at [troupea@michigan.gov](mailto:troupea@michigan.gov) or 517-241-3493 - or - Michelle Edwards (MSHDA) at [edwardsm6@michigan.gov](mailto:edwardsm6@michigan.gov) or 517-241-1156