

Farmland & Open Space Preservation Program Enrollment

WHAT IS FARMLAND & OPEN SPACE PRESERVATION PROGRAM

The Michigan Department of Agriculture and Rural Development's Farmland and Open Space Preservation Program is designed to protect farmland and open space through agreements that restrict development and provide tax incentives for program participation.

How does the landowner benefit from enrollment in the program?

Landowners may be entitled to an income tax credit equal to the amount of the property taxes on the land, less 3.5% of the total household income. This tax credit is in addition to the Homestead Property Tax Credit, for which the landowner may already be qualified.

Qualified land enrolled under an agreement may be exempt from special assessments for sanitary sewers, water, lights, or non-farm drainage, unless the assessments were imposed prior to the recording of the farmland agreement.

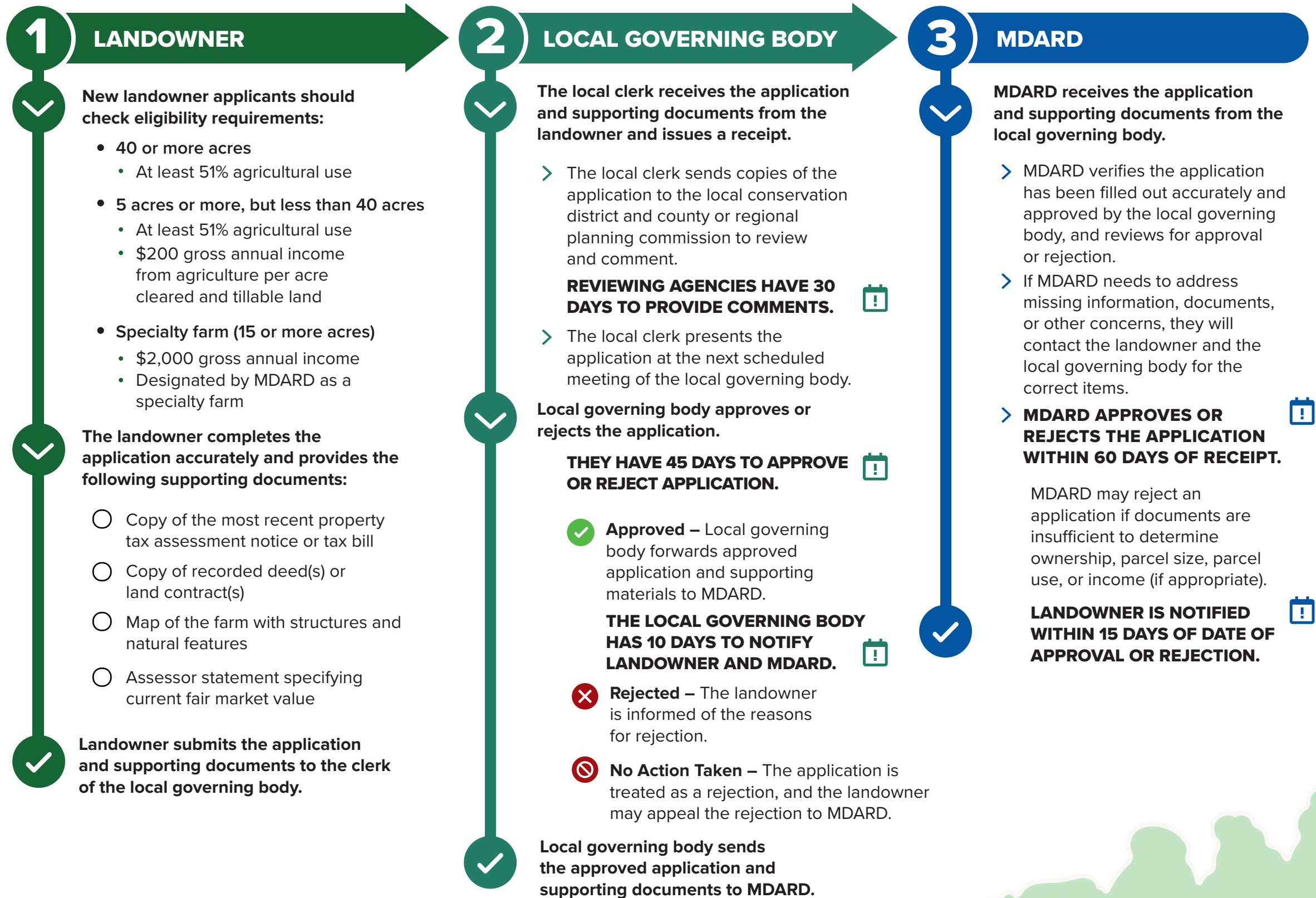
TAX YEAR DEADLINE



Tax credits may be claimed this year for fully approved applications if the local approval is completed by Nov. 1. Days in this graphic refer to calendar days.

APPLICATION RESULTS

- Approved**
The applicant must record the agreement with the Register of Deeds and return a copy to MDARD.
- Rejected**
The landowner is informed of the reasons for rejection. The landowner may appeal directly to MDARD within 30 days.
- No Action Taken**
MDARD does not receive responses from the landowner or the local governing body, and informs the landowner of rejection.



Scan QR code or go to Michigan.gov/Farmland for more information.

