



Qualified Forest Program

PROGRAM MANAGER: Ben Schram | 517-284-5630 | SchramB1@michigan.gov

The Qualified Forest Program (QFP) provides a property tax exemption for private landowners who actively manage their forestland for commercial harvest. The goal of the program is to fuel regional economies through timber harvest and individual tax savings.

IMPACT FOR MICHIGAN:

More than 10 million acres of forested land in Michigan is owned by “non-industrial” private landowners. These lands are currently harvested at one-third the rate of forest growth. Consequently, millions of dollars of timber that could be harvested is going unutilized. By helping landowners manage their forestland, it is estimated that the QFP will stimulate more than 900 additional forestry-related jobs, \$195 million in business revenue, and \$44 million in labor income.

2022 ACCOMPLISHMENTS:

- Enrolled 50,333 new acres, bringing total participation to 855,675 acres.
- Public Act 672 of 2018 increased the limitation of 1.2 million acres of qualified forest property that can be exempted to 2.5 million; eliminated the 640-acre cap on the number of acres that may be enrolled per local unit of government and landowner; clarifying the intent and improving the administration of the program. The legislative changes created an additional opportunity for forest landowners to enroll in the program, further supporting the forest products industry.
- Streamlined and improved queries and functionality of the current database to provide meaningful data to partners in forestry.
- QFP and Forestry Assistance Program are continuing collaborative marketing efforts to landowners that may be eligible for program enrollment, based upon acreage and property classification.

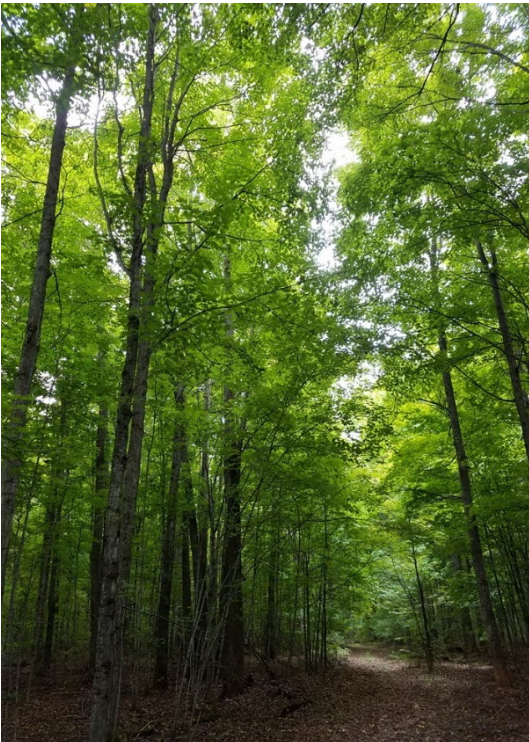
MEASURING SUCCESS:

Metric	2018	2019	2020	2021	2022
Applications Submitted	617	614	452	576	375
Forest Management Plans Received	546	604	432	504	355
Acres from Commercial Forest (DNR)	1,512	1,676	1,266	3,835	N/A*
New Acres of Affidavits Sent for Recording	55,409	167,883	70,679	69,034	50,333
Cumulative Acres Enrolled	483,368	665,628	736,307	805,341	855,675
Harvested Wood Products (cords)	275,402	93,347	352,339	270,788	749,905
Harvested Timber Value (dollars)	5,636,097	3,890,722	6,110,208	6,992,302	9,721,478
Revenue Received from 2 Mill Fee	414,437	482,171	660,810	648,194	499,756

*The transitional qualified forest program allowing acres to transfer from the Commercial Forest program into the Qualified Forest program sunset on September 1, 2021

2023 PROGRAM GOALS:

- Increase enrollment in the QFP by 72,800 acres for the 2024 tax year.
- Continuous improvements with the QFP database to capture provisions outlined in PA 672 of 2018, and to improve efficiencies in the processing time of applications and data management.
- Continue working with Forestry Assistance Program staff and other marketing partners toward the development and implementation of new and existing targeted marketing campaigns to raise awareness of the benefits of the QFP.
- Meet with forestry stakeholders and other groups (i.e., local units of government) to develop relationships, discuss the QFP and its benefits, and encourage collaborative efforts between the public and private sectors.



KEY STAKEHOLDERS

- Private forestland owners
- Forest plan writers
- Commercial foresters
- Conservation Districts
- Forest products industry

LEGAL AUTHORITY:

- MCL 211.7jj[1] (general provisions)
- MCL 211.1033 (recapture tax imposition)
- MCL 211.1034 (recapture tax rate)
- MCL 324.51305 (private forest land enhancement fund)
- MCL 324.51306 (qualified foresters)
- MCL 380.1211 (exemption of qualified forest property)
- MCL 211.1091-211.1101 (transitional qualified forest)