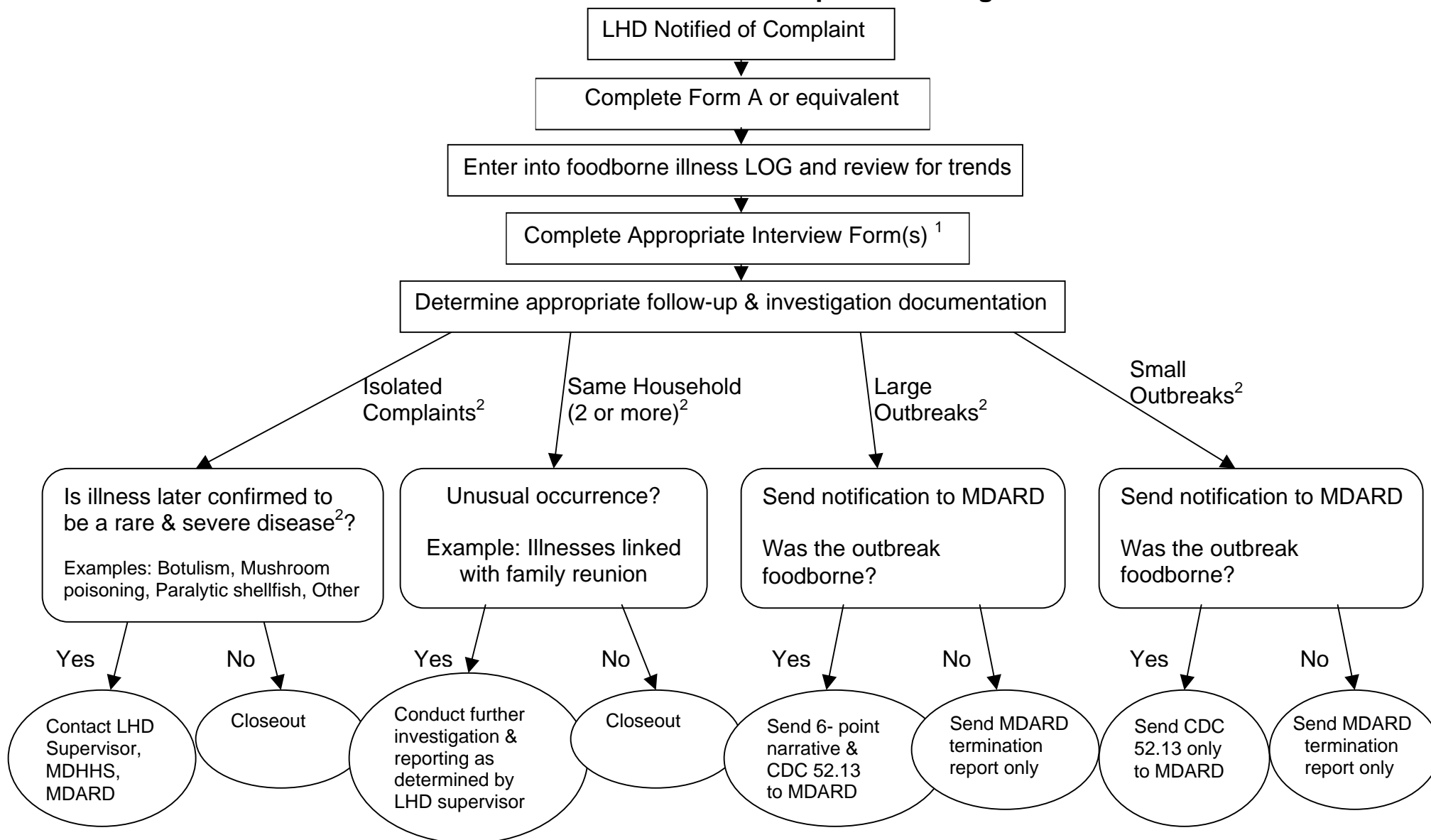


Unconfirmed Gastrointestinal Illness Complaint Investigation Protocol



(1) Complete MI Gastrointestinal Illness Complaint Interview Form, IAFF C1/C2, an equivalent form or outbreak specific questionnaire. Lab confirmed enteric infections must also be entered in MDSS.

(2) See Michigan Food Law – Sec. 3103 – definition of *foodborne illness outbreak* as incident where a) 2 or more persons, not of same household, have ingested a common food and have similar disease, symptoms, or excrete same pathogens and there is a time, place or person association between the persons, or; b) there is a single case of suspected botulism, mushroom poisoning, paralytic shellfish poisoning or other rare disease, or; c) there is a case of disease or poisoning that can be definitely related to ingestion of a food.