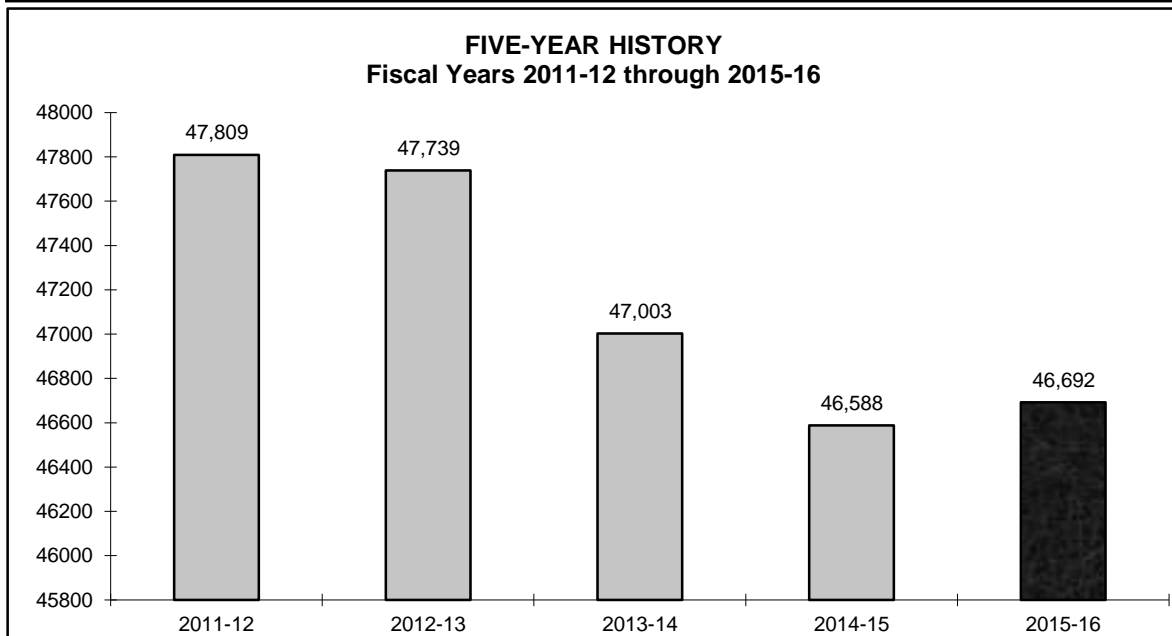
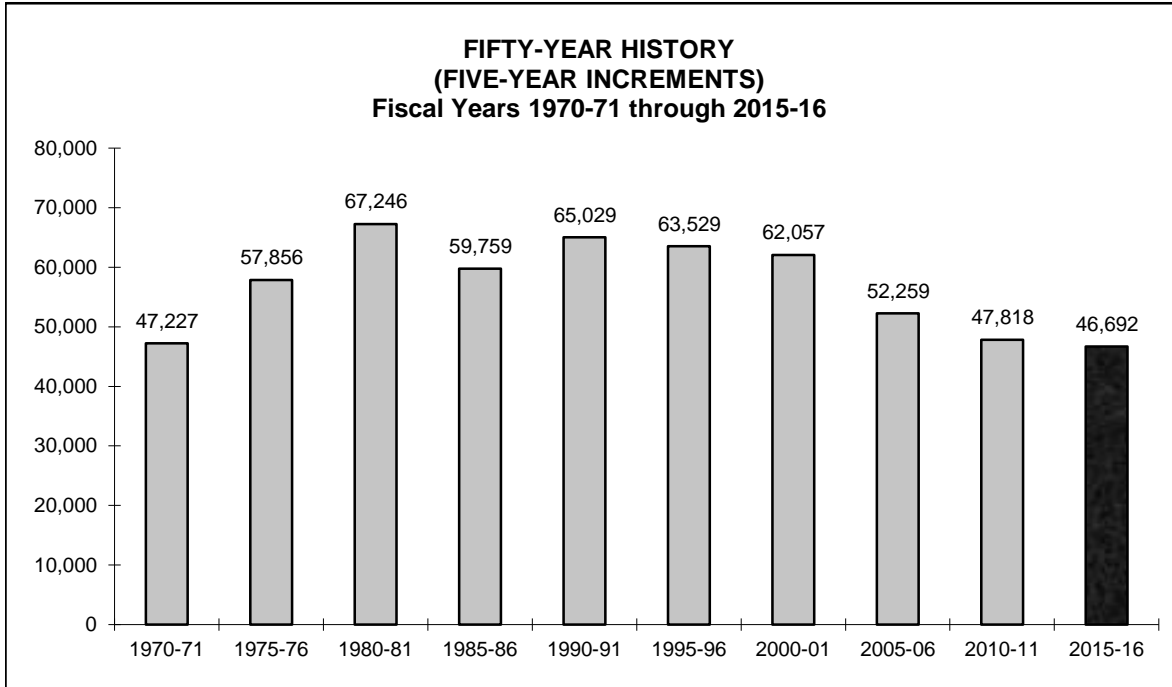


SECTION ONE

---

**TRENDS IN THE  
STATE CLASSIFIED WORKFORCE**

STATE OF MICHIGAN  
ACTIVE CLASSIFIED EMPLOYMENT AVERAGES-STATEWIDE

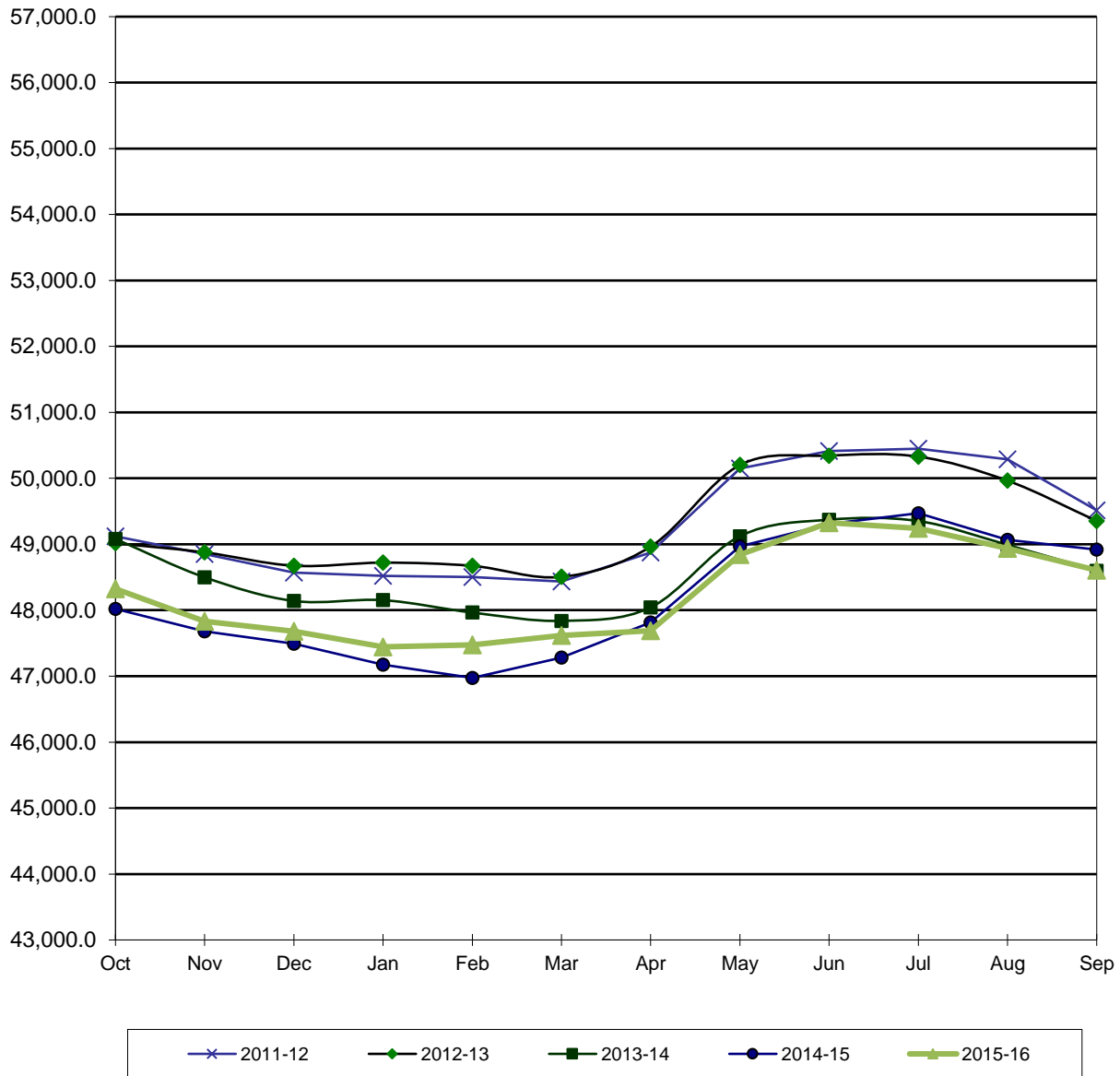


Comment: Employment averages before fiscal year 2004-05 are based on counts of classified employees in full-time, part-time, permanent-intermittent, limited-term, seasonal, and noncareer positions for each month during the fiscal year.

Beginning in FY 2004-05, this report reflects classified employees who are full-time, part-time, permanent-intermittent, limited-term, seasonal, or noncareer in primary positions only. Beginning in FY 2011-12, this report reflects classified employees who are full-time, part-time, permanent-intermittent, limited-term, seasonal, noncareer, or on workers' compensation in primary positions only, except for the following noncareer appointments: STUDENT ASSISTANT-E, TRANSPORTATION AIDE-E, and STATE WORKER. As of September 24, 2016, these positions represent 90.5% of all noncareer appointments. Job-share positions are those occupied by two or more individuals scheduled to share a job by performing duties that would normally be assigned to a one employee. For this report, the number of employees who job share is halved.

Source: Michigan Civil Service Commission HWF09

**STATE OF MICHIGAN  
ACTIVE CLASSIFIED EMPLOYMENT FIGURES  
Fiscal Years 2011-12 through 2015-16**



Comment: Employment levels typically increase during the summer when temporary seasonal hiring occurs.

Source: Michigan Civil Service Commission HWF03 or the last full pay period each month.

STATE OF MICHIGAN

Table 1-1

ACTIVE CLASSIFIED EMPLOYEES BY EMPLOYEE STATUS  
WITH DEPARTMENT AND PROCESS LEVEL DETAIL

Pay End Date: September 24, 2016

DEPARTMENT / PROCESS LEVEL		FULL-TIME	PART-TIME	PERMANENT-INTERMITTENT	LIMITED-TERM	SEASONAL	NON CAREER	WORKERS' COMPENSATION	SUB-TOTAL EMPLOYEES	JOB SHARE ADJUSTMENT	TOTAL EMPLOYEES
AGRICULTURE AND RURAL DVLPMNT	7901	399.0	0.0	4.0	8.0	0.0	19.0	0.0	430.0	0.0	430.0
<b>AGRICULTURE AND RURAL DVLPMNT</b>		<b>399.0</b>	<b>0.0</b>	<b>4.0</b>	<b>8.0</b>	<b>0.0</b>	<b>19.0</b>	<b>0.0</b>	<b>430.00</b>	<b>0.0</b>	<b>430.0</b>
ATY GNRL CENTRAL OFFICE	1101	443.0	1.0	0.0	26.0	0.0	0.0	0.0	470.0	0.0	470.0
PACC	1102	11.0	0.0	0.0	1.0	0.0	0.0	0.0	12.0	0.0	12.0
<b>ATTORNEY GENERAL</b>		<b>454.0</b>	<b>1.0</b>	<b>0.0</b>	<b>27.0</b>	<b>0.0</b>	<b>0.0</b>	<b>0.0</b>	<b>482.00</b>	<b>0.0</b>	<b>482.0</b>
LEGISLATIVE AUDITOR GENERAL	0301	127.0	0.0	10.0	18.0	0.0	3.0	0.0	158.0	0.0	158.0
<b>AUDITOR GENERAL</b>		<b>127.0</b>	<b>0.0</b>	<b>10.0</b>	<b>18.0</b>	<b>0.0</b>	<b>3.0</b>	<b>0.0</b>	<b>158.00</b>	<b>0.0</b>	<b>158.0</b>
CIV RGHT CENTRAL OFFICE	1501	84.0	0.0	0.0	3.0	0.0	1.0	0.0	88.0	0.0	88.0
<b>CIVIL RIGHTS</b>		<b>84.0</b>	<b>0.0</b>	<b>0.0</b>	<b>3.0</b>	<b>0.0</b>	<b>1.0</b>	<b>0.0</b>	<b>88.00</b>	<b>0.0</b>	<b>88.0</b>
CIVIL SERVICE COMMISSION	1901	393.0	1.0	3.0	15.0	0.0	18.0	0.0	430.0	0.0	430.0
<b>CIVIL SERVICE COMMISSION</b>		<b>393.0</b>	<b>1.0</b>	<b>3.0</b>	<b>15.0</b>	<b>0.0</b>	<b>18.0</b>	<b>0.0</b>	<b>430.00</b>	<b>0.0</b>	<b>430.0</b>
DETROIT DETENTION CENTER	4754	57.0	0.0	0.0	0.0	0.0	0.0	1.0	58.0	0.0	58.0
DETROIT REENTRY CENTER	4764	226.0	0.0	0.0	1.0	0.0	0.0	0.0	227.0	0.0	227.0
DOC-ADRIAN/GUS HARRISON FAC	4729	478.0	0.0	1.0	1.0	0.0	0.0	1.0	481.0	0.0	481.0
DOC-ALGER MAX SECURITY CORRECT	4735	239.0	0.0	0.0	1.0	0.0	0.0	1.0	241.0	0.0	241.0
DOC-BARAGA FACILITY	4740	285.0	0.0	1.0	1.0	0.0	0.0	0.0	287.0	0.0	287.0
DOC-BELLAMY CREEK FACILITY	4748	402.0	0.0	0.0	1.0	0.0	0.0	1.0	404.0	0.0	404.0
DOC-BROOKS FACTY/MUSKEGON TEMP	4730	451.0	0.0	0.0	0.0	0.0	0.0	1.0	452.0	0.0	452.0
DOC-CARSON CITY FAC/CARSON CIT	4731	408.0	0.0	0.0	1.0	0.0	1.0	2.0	412.0	0.0	412.0
DOC-CENTRAL MICHIGAN FACILITY	4744	394.0	0.0	0.0	1.0	0.0	1.0	0.0	396.0	0.0	396.0
DOC-CHIPPEWA FAC/CHIPPEWA TEM	4732	452.0	1.0	0.0	1.0	0.0	1.0	0.0	455.0	0.0	455.0
DOC-COOPER STREET FACILITY	4752	368.0	5.0	0.0	1.0	0.0	0.0	0.0	374.0	0.0	374.0
DOC-CORRECTN CENTRAL OFFICE	4702	514.0	0.0	0.0	15.0	0.0	41.0	1.0	571.0	0.0	571.0
DOC-COTTON FACILITY	4720	382.0	0.0	0.0	1.0	0.0	0.0	1.0	384.0	0.0	384.0
DOC-EGELER FACILITY	4727	556.0	0.0	0.0	1.0	0.0	0.0	1.0	558.0	0.0	558.0
DOC-FIELD OPERATION REGION III	4763	784.0	7.0	1.0	2.0	0.0	0.0	1.0	795.0	0.0	795.0
DOC-FIELD OPERATIONS REGION I	4761	802.0	1.0	0.0	2.0	0.0	0.0	2.0	807.0	0.0	807.0
DOC-HANDLON MI TRAINING UNT	4705	294.0	0.0	0.0	3.0	0.0	0.0	0.0	297.0	0.0	297.0
DOC-HURON VALLEY CORR COMPLEX	4715	553.0	3.0	0.0	1.0	0.0	0.0	2.0	559.0	0.0	559.0
DOC-IONIA MAXIMUM FACILITY	4724	267.0	0.0	0.0	1.0	0.0	0.0	0.0	268.0	0.0	268.0
DOC-JACKSON CENTRAL REGION	4750	105.0	0.0	0.0	1.0	0.0	0.0	1.0	107.0	0.0	107.0
DOC-KINROSS CORRECTIONAL FCLTY	4712	284.0	0.0	0.0	1.0	0.0	0.0	0.0	285.0	0.0	285.0
DOC-LAKELAND MENS FACILITY	4718	282.0	0.0	0.0	1.0	0.0	0.0	1.0	284.0	0.0	284.0

Comments: This report reflects classified employees who are full-time, part-time, permanent-intermittent, limited-term, seasonal, noncareer, or on workers' compensation in primary positions only. Job-share positions are those occupied by two or more individuals scheduled to share a job by performing the duties which would normally be assigned to one employee. Individuals sharing jobs can be part-time, permanent-intermittent, limited-term, seasonal, or noncareer. For this report, the actual number of employees who job share are halved.

Source: Michigan Civil Service Commission HWF04

STATE OF MICHIGAN

Table 1-1

ACTIVE CLASSIFIED EMPLOYEES BY EMPLOYEE STATUS  
WITH DEPARTMENT AND PROCESS LEVEL DETAIL

Pay End Date: September 24, 2016

DEPARTMENT / PROCESS LEVEL		FULL-TIME	PART-TIME	PERMANENT-INTERMITTENT	LIMITED-TERM	SEASONAL	NON CAREER	WORKERS' COMPENSATION	SUB-TOTAL EMPLOYEES	JOB SHARE ADJUSTMENT	TOTAL EMPLOYEES
DOC-MACOMB FACILITY	4741	309.0	1.0	0.0	1.0	0.0	0.0	3.0	314.0	0.0	314.0
DOC-MARQUETTE BRANCH PRISON	4706	337.0	1.0	0.0	1.0	0.0	0.0	0.0	339.0	0.0	339.0
DOC-MAXEY CORRECTIONAL	4749	294.0	0.0	0.0	1.0	0.0	0.0	1.0	296.0	0.0	296.0
DOC-MICHIGAN REFORMATORY	4707	299.0	0.0	0.0	1.0	0.0	1.0	3.0	304.0	0.0	304.0
DOC-MICHIGAN STATE INDUSTRIES	4709	50.0	0.0	0.0	1.0	0.0	1.0	1.0	53.0	0.0	53.0
DOC-MUSKEGON FACILITY	4704	215.0	0.0	0.0	1.0	0.0	0.0	1.0	217.0	0.0	217.0
DOC-NEWBERRY FACILITY	4743	212.0	0.0	2.0	1.0	0.0	0.0	0.0	215.0	0.0	215.0
DOC-OAKS FACILITY	4739	264.0	2.0	0.0	1.0	0.0	0.0	1.0	268.0	0.0	268.0
DOC-OJIBWAY FACILITY	4746	207.0	0.0	0.0	1.0	0.0	1.0	0.0	209.0	0.0	209.0
DOC-PARNALL FACILITY	4751	276.0	0.0	1.0	0.0	0.0	0.0	0.0	277.0	0.0	277.0
DOC-PUGSLEY FACILITY	4745	117.0	0.0	0.0	1.0	0.0	0.0	0.0	118.0	0.0	118.0
DOC-SAGINAW FACILITY	4742	293.0	1.0	0.0	2.0	0.0	1.0	0.0	297.0	0.0	297.0
DOC-ST. LOUIS FACILITY	4733	320.0	0.0	1.0	1.0	0.0	0.0	4.0	326.0	0.0	326.0
DOC-THUMB FACILITY	4725	309.0	0.0	0.0	0.0	0.0	0.0	0.0	309.0	0.0	309.0
NTHRN REGION ADMIN AND SUPPORT	4714	28.0	0.0	0.0	0.0	0.0	0.0	0.0	28.0	0.0	28.0
SOUTHERN REGION - IONIA	4711	34.0	0.0	0.0	0.0	0.0	0.0	1.0	35.0	0.0	35.0
<b>CORRECTIONS</b>		<b>12,147.0</b>	<b>22.0</b>	<b>7.0</b>	<b>51.0</b>	<b>0.0</b>	<b>48.0</b>	<b>32.0</b>	<b>12,307.00</b>	<b>0.0</b>	<b>12,307.0</b>
EDUCATION	3103	429.0	5.0	3.0	18.0	49.0	11.0	0.0	515.0	0.0	515.0
<b>EDUCATION</b>		<b>429.0</b>	<b>5.0</b>	<b>3.0</b>	<b>18.0</b>	<b>49.0</b>	<b>11.0</b>	<b>0.0</b>	<b>515.00</b>	<b>0.0</b>	<b>515.0</b>
DEQ-ENVIRONMENTAL QUALITY	7601	1,069.0	4.0	16.0	32.0	0.0	15.0	0.0	1,136.0	0.5	1,135.5
<b>ENVIRONMENTAL QUALITY</b>		<b>1,069.0</b>	<b>4.0</b>	<b>16.0</b>	<b>32.0</b>	<b>0.0</b>	<b>15.0</b>	<b>0.0</b>	<b>1,136.00</b>	<b>0.5</b>	<b>1,135.5</b>
OFFICE OF THE GOVERNOR	0101	0.0	0.0	1.0	58.0	0.0	0.0	0.0	59.0	0.0	59.0
<b>EXECUTIVE OFFICE</b>		<b>0.0</b>	<b>0.0</b>	<b>1.0</b>	<b>58.0</b>	<b>0.0</b>	<b>0.0</b>	<b>0.0</b>	<b>59.00</b>	<b>0.0</b>	<b>59.0</b>
DEPT OF INS AND FIN SERVICE	6501	276.0	2.0	0.0	20.0	0.0	7.0	0.0	305.0	0.0	305.0
<b>INSURANCE AND FINANCIAL SERV</b>		<b>276.0</b>	<b>2.0</b>	<b>0.0</b>	<b>20.0</b>	<b>0.0</b>	<b>7.0</b>	<b>0.0</b>	<b>305.00</b>	<b>0.0</b>	<b>305.0</b>
LICENSING AND REGULATORY AFF	6401	1,800.0	4.0	9.0	58.0	6.0	77.0	0.0	1,954.0	0.0	1,954.0
<b>LICENSING &amp; REGULATORY AFFAIRS</b>		<b>1,800.0</b>	<b>4.0</b>	<b>9.0</b>	<b>58.0</b>	<b>6.0</b>	<b>77.0</b>	<b>0.0</b>	<b>1,954.00</b>	<b>0.0</b>	<b>1,954.0</b>
MDHHS-CARO CENTER	3902	293.0	0.0	0.0	35.0	0.0	0.0	8.0	336.0	0.0	336.0
MDHHS-COM HEALTH CENTRAL OFF	3901	1,210.0	0.0	2.0	33.0	0.0	17.0	0.0	1,262.0	0.0	1,262.0
MDHHS-CTR FORENSIC PSYCHIATRY	3920	493.0	1.0	0.0	1.0	0.0	5.0	0.0	500.0	0.0	500.0
MDHHS-HAWTHORN CTR NORTHVILLE	3906	200.0	0.0	0.0	2.0	0.0	6.0	4.0	212.0	0.0	212.0
MDHHS-KALAMAZOO PSYCHIATRIC HS	3909	395.0	0.0	0.0	49.0	0.0	0.0	8.0	452.0	0.0	452.0
MDHHS-OFFICE OF SERVICES TO TH	3970	26.0	0.0	0.0	1.0	0.0	0.0	0.0	27.0	0.0	27.0

Comments: This report reflects classified employees who are full-time, part-time, permanent-intermittent, limited-term, seasonal, noncareer, or on workers' compensation in primary positions only. Job-share positions are those occupied by two or more individuals scheduled to share a job by performing the duties which would normally be assigned to one employee. Individuals sharing jobs can be part-time, permanent-intermittent, limited-term, seasonal, or noncareer. For this report, the actual number of employees who job share are halved.

Source: Michigan Civil Service Commission HWF04

STATE OF MICHIGAN

Table 1-1

ACTIVE CLASSIFIED EMPLOYEES BY EMPLOYEE STATUS  
WITH DEPARTMENT AND PROCESS LEVEL DETAIL

Pay End Date: September 24, 2016

DEPARTMENT / PROCESS LEVEL		FULL-TIME	PART-TIME	PERMANENT-INTERMITTENT	LIMITED-TERM	SEASONAL	NON CAREER	WORKERS' COMPENSATION	SUB-TOTAL EMPLOYEES	JOB SHARE ADJUSTMENT	TOTAL EMPLOYEES
MDHHS-OFF OF THE INSPECTOR GEN	3947	38.0	0.0	0.0	1.0	0.0	0.0	0.0	39.0	0.0	39.0
MDHHS-WALTER P.REUTHER PSY HS	3945	335.0	0.0	0.0	2.0	0.0	0.0	4.0	341.0	0.0	341.0
<b>MDHHS - COMMUNITY HEALTH</b>		<b>2,990.0</b>	<b>1.0</b>	<b>2.0</b>	<b>124.0</b>	<b>0.0</b>	<b>28.0</b>	<b>24.0</b>	<b>3,169.00</b>	<b>0.0</b>	<b>3,169.0</b>
MDHHS-BERRIEN COUNTY	4322	135.0	0.0	0.0	1.0	3.0	0.0	0.0	139.0	0.0	139.0
MDHHS-CALHOUN COUNTY	4323	142.0	0.0	0.0	1.0	0.0	0.0	0.0	143.0	0.0	143.0
MDHHS-COUNTIES	4308	2,617.0	0.0	1.0	55.0	26.0	0.0	0.0	2,699.0	0.0	2,699.0
MDHHS-DPT OF HUMAN SVC CNTL OF	4301	2,770.0	0.0	7.0	57.0	32.0	14.0	1.0	2,881.0	0.0	2,881.0
MDHHS-GENESEE COUNTY	4302	434.0	0.0	0.0	19.0	0.0	0.0	0.0	453.0	0.0	453.0
MDHHS-INGHAM COUNTY	4312	245.0	0.0	0.0	7.0	1.0	1.0	0.0	254.0	0.0	254.0
MDHHS-INSTITUTIONS	4307	60.0	0.0	11.0	1.0	0.0	0.0	0.0	72.0	0.0	72.0
MDHHS-JACKSON COUNTY	4315	150.0	0.0	0.0	8.0	0.0	0.0	0.0	158.0	0.0	158.0
MDHHS-KALAMAZOO COUNTY	4314	255.0	0.0	0.0	2.0	0.0	0.0	0.0	257.0	0.0	257.0
MDHHS-KENT COUNTY	4303	433.0	0.0	0.0	1.0	9.0	0.0	1.0	444.0	0.0	444.0
MDHHS-MACOMB COUNTY	4304	442.0	0.0	0.0	0.0	0.0	0.0	1.0	443.0	4.0	439.0
MDHHS-MUSKEGON COUNTY	4324	212.0	0.0	0.0	0.0	0.0	0.0	0.0	212.0	0.0	212.0
MDHHS-OAKLAND COUNTY	4305	505.0	0.0	0.0	32.0	0.0	0.0	1.0	538.0	0.0	538.0
MDHHS-SAGINAW COUNTY	4313	175.0	0.0	0.0	6.0	0.0	0.0	0.0	181.0	0.0	181.0
MDHHS-WASHTENAW	4325	148.0	0.0	0.0	6.0	0.0	0.0	0.0	154.0	0.0	154.0
MDHHS-WAYNE COUNTY DSS	4306	82.0	0.0	0.0	10.0	0.0	0.0	0.0	92.0	0.0	92.0
MDHHS-WAYNE COUNTY O.C.Y.S.	4320	551.0	0.0	0.0	2.0	0.0	0.0	0.0	553.0	0.0	553.0
MDHHS-WAYNE COUNTY ZONE 3	4318	421.0	0.0	0.0	1.0	0.0	0.0	0.0	422.0	0.0	422.0
MDHHS-WAYNE COUNTY ZONE 4	4319	429.0	0.0	0.0	0.0	0.0	0.0	0.0	429.0	0.0	429.0
MDHHS-WAYNE COUNTY ZONE L	4316	339.0	0.0	0.0	0.0	0.0	0.0	0.0	339.0	0.0	339.0
<b>MDHHS - HUMAN SERVICES</b>		<b>10,545.0</b>	<b>0.0</b>	<b>19.0</b>	<b>209.0</b>	<b>71.0</b>	<b>15.0</b>	<b>4.0</b>	<b>10,863.00</b>	<b>4.0</b>	<b>10,859.0</b>
D.J. JACOBETTI HOME FOR VETERA	5103	149.0	6.0	1.0	8.0	0.0	3.0	0.0	167.0	0.5	166.5
GRAND RAPIDS HOME FOR VETERANS	5102	200.0	10.0	19.0	1.0	1.0	5.0	1.0	237.0	0.0	237.0
MIL AFFR CENTRAL OFFICE	5101	274.0	0.0	8.0	26.0	22.0	24.0	1.0	355.0	0.0	355.0
<b>MILITARY &amp; VETERAN AFFAIRS</b>		<b>623.0</b>	<b>16.0</b>	<b>28.0</b>	<b>35.0</b>	<b>23.0</b>	<b>32.0</b>	<b>2.0</b>	<b>759.00</b>	<b>0.5</b>	<b>758.5</b>
DNR-NATURAL RESOURCES	7501	1,353.0	2.0	49.0	30.0	266.0	1,135.0	2.0	2,837.0	0.0	2,837.0
<b>NATURAL RESOURCES</b>		<b>1,353.0</b>	<b>2.0</b>	<b>49.0</b>	<b>30.0</b>	<b>266.0</b>	<b>1,135.0</b>	<b>2.0</b>	<b>2,837.00</b>	<b>0.0</b>	<b>2,837.0</b>
DEPARTMENT OF STATE	2301	1,177.0	0.0	86.0	51.0	0.0	227.0	0.0	1,541.0	0.0	1,541.0
<b>STATE</b>		<b>1,177.0</b>	<b>0.0</b>	<b>86.0</b>	<b>51.0</b>	<b>0.0</b>	<b>227.0</b>	<b>0.0</b>	<b>1,541.00</b>	<b>0.0</b>	<b>1,541.0</b>
STATE POLICE	5501	2,816.0	10.0	7.0	61.0	0.0	6.0	8.0	2,908.0	0.0	2,908.0

Comments: This report reflects classified employees who are full-time, part-time, permanent-intermittent, limited-term, seasonal, noncareer, or on workers' compensation in primary positions only. Job-share positions are those occupied by two or more individuals scheduled to share a job by performing the duties which would normally be assigned to one employee. Individuals sharing jobs can be part-time, permanent-intermittent, limited-term, seasonal, or noncareer. For this report, the actual number of employees who job share are halved.

Source: Michigan Civil Service Commission HWF04

## STATE OF MICHIGAN

Table 1-1

ACTIVE CLASSIFIED EMPLOYEES BY EMPLOYEE STATUS  
WITH DEPARTMENT AND PROCESS LEVEL DETAIL

Pay End Date: September 24, 2016

DEPARTMENT / PROCESS LEVEL		FULL-TIME	PART-TIME	PERMANENT-INTERMITTENT	LIMITED-TERM	SEASONAL	NON CAREER	WORKERS' COMPENSATION	SUB-TOTAL EMPLOYEES	JOB SHARE ADJUSTMENT	TOTAL EMPLOYEES
<b>STATE POLICE</b>		<b>2,816.0</b>	<b>10.0</b>	<b>7.0</b>	<b>61.0</b>	<b>0.0</b>	<b>6.0</b>	<b>8.0</b>	<b>2,908.00</b>	<b>0.0</b>	<b>2,908.0</b>
TED - LANDBANK AUTHORITY	1802	5.0	0.0	0.0	0.0	0.0	0.0	0.0	5.0	0.0	5.0
TED - MSF - MEDC	1804	87.0	0.0	0.0	10.0	0.0	1.0	0.0	98.0	0.0	98.0
TED - MSHDA	1803	267.0	3.0	4.0	9.0	0.0	17.0	0.0	300.0	0.0	300.0
TED - TALENT INVESTMENT AGY	1801	767.0	2.0	0.0	62.0	0.0	2.0	0.0	833.0	0.0	833.0
<b>TALENT &amp; ECONOMIC DEVELOPMENT</b>		<b>1,126.0</b>	<b>5.0</b>	<b>4.0</b>	<b>81.0</b>	<b>0.0</b>	<b>20.0</b>	<b>0.0</b>	<b>1,236.00</b>	<b>0.0</b>	<b>1,236.0</b>
DTMB-CHIEF COMPLIANCE OFF	0741	0.0	0.0	0.0	1.0	0.0	0.0	0.0	1.0	0.0	1.0
TECH, MGMT AND BUDGET - IT	0801	1,745.0	1.0	0.0	46.0	0.0	79.0	0.0	1,871.0	0.0	1,871.0
TECH, MGMT AND BUDGET - MB	0701	950.0	17.0	2.0	85.0	0.0	49.0	2.0	1,105.0	0.0	1,105.0
<b>TECHNOLOGY, MANAGEMENT &amp; BUDGET</b>		<b>2,695.0</b>	<b>18.0</b>	<b>2.0</b>	<b>132.0</b>	<b>0.0</b>	<b>128.0</b>	<b>2.0</b>	<b>2,977.00</b>	<b>0.0</b>	<b>2,977.0</b>
BRIDGE AUTHORITIES-INTERNATION	5903	31.0	0.0	0.0	0.0	0.0	21.0	0.0	52.0	0.0	52.0
BRIDGE AUTHORITIES-MACKINAC	5902	36.0	0.0	23.0	22.0	0.0	8.0	1.0	90.0	0.0	90.0
TRANSPORTATION CENTRAL OFFICE	5901	2,329.0	4.0	18.0	76.0	17.0	175.0	4.0	2,623.0	1.0	2,622.0
<b>TRANSPORTATION</b>		<b>2,396.0</b>	<b>4.0</b>	<b>41.0</b>	<b>98.0</b>	<b>17.0</b>	<b>204.0</b>	<b>5.0</b>	<b>2,765.00</b>	<b>1.0</b>	<b>2,764.0</b>
BUREAU OF STATE LOTTERY	2795	173.0	0.0	0.0	2.0	0.0	26.0	0.0	201.0	0.0	201.0
GAMING CONTROL	2707	113.0	0.0	3.0	19.0	0.0	9.0	0.0	144.0	0.0	144.0
STATE BUILDING AUTHORITY	2704	3.0	0.0	0.0	0.0	0.0	0.0	0.0	3.0	0.0	3.0
TREASURY CENTRAL PAYROLL	2701	1,263.0	1.0	4.0	48.0	0.0	27.0	0.0	1,343.0	0.0	1,343.0
<b>TREASURY</b>		<b>1,552.0</b>	<b>1.0</b>	<b>7.0</b>	<b>69.0</b>	<b>0.0</b>	<b>62.0</b>	<b>0.0</b>	<b>1,691.00</b>	<b>0.0</b>	<b>1,691.0</b>
<b>STATEWIDE TOTAL</b>		<b>44,451.0</b>	<b>96.0</b>	<b>298.0</b>	<b>1,198.0</b>	<b>432.0</b>	<b>2,056.0</b>	<b>79.0</b>	<b>48,610.0</b>	<b>6.0</b>	<b>48,604.0</b>

Comments: This report reflects classified employees who are full-time, part-time, permanent-intermittent, limited-term, seasonal, noncareer, or on workers' compensation in primary positions only. Job-share positions are those occupied by two or more individuals scheduled to share a job by performing the duties which would normally be assigned to one employee. Individuals sharing jobs can be part-time, permanent-intermittent, limited-term, seasonal, or noncareer. For this report, the actual number of employees who job share are halved.

Source: Michigan Civil Service Commission HWF04

**STATE OF MICHIGAN**  
**Full-Time Equated Position Report by Department**  
**Fiscal Year 2015-16 Summary**

Department		Fiscal Year 2016 Appropriated FTE Positions (A)	Fiscal Year 2016 Average FTE Positions (B)	Fiscal Year 2015 Average FTE Positions (C)	FY 2015 and FY 2016 Difference (B - C)	FY 2016 Average and Appropriated Difference (B - A)
<b>AGRICULTURE AND RURAL DVLPMNT</b>	Regular	454.0	401.6	382.3	19.3	-52.4
	Overtime	0.0	0.9	0.1	0.8	0.9
	Total	454.0	402.5	382.4	20.1	-51.5
<b>ATTORNEY GENERAL</b>	Regular	518.5	467.3	458.3	9.0	-51.2
	Overtime	0.0	0.2	0.2	0.0	0.2
	Total	518.5	467.6	458.5	9.1	-50.9
<b>AUDITOR GENERAL</b>	Regular	0.0	149.2	132.4	16.8	149.2
	Overtime	0.0	0.3	0.1	0.1	0.3
	Total	0.0	149.4	132.5	16.9	149.4
<b>CIVIL RIGHTS</b>	Regular	129.0	90.3	89.1	1.2	-38.7
	Overtime	0.0	0.0	0.0	0.0	0.0
	Total	129.0	90.3	89.1	1.2	-38.7
<b>CIVIL SERVICE COMMISSION</b>	Regular	446.0	411.3	396.9	14.5	-34.7
	Overtime	0.0	1.4	0.6	0.7	1.4
	Total	446.0	412.7	397.5	15.2	-33.3
<b>CORRECTIONS</b>	Regular	14,174.3	12,583.3	12,187.8	395.4	-1,591.0
	Overtime	0.0	795.4	867.4	-72.0	795.4
	Total	14,174.3	13,378.7	13,055.2	323.4	-795.6
<b>EDUCATION</b>	Regular	588.5	490.2	483.5	6.7	-98.3
	Overtime	0.0	0.5	0.4	0.1	0.5
	Total	588.5	490.7	483.9	6.8	-97.8

Comments: Regular FTEs are the number of full-time equated positions based on regular time pay codes (total regular employee hours worked divided by 80). Overtime FTEs are the number of full-time equated positions based on overtime pay codes (total overtime hours worked divided by 80). Overtime FTEs are not appropriated as a separate category. Appropriated Position Figures are provided by DTMB, State Budget Office.

Source: Michigan Civil Service Commission MPR-0160



**STATE OF MICHIGAN**  
**Full-Time Equated Position Report by Department**  
**Fiscal Year 2015-16 Summary**

Department		Fiscal Year 2016 Appropriated FTE Positions (A)	Fiscal Year 2016 Average FTE Positions (B)	Fiscal Year 2015 Average FTE Positions (C)	FY 2015 and FY 2016 Difference (B - C)	FY 2016 Average and Appropriated Difference (B - A)
<b>ENVIRONMENTAL QUALITY</b>	Regular	1,218.0	1,086.9	1,049.9	37.0	-131.1
	Overtime	0.0	8.8	2.0	6.8	8.8
	Total	1,218.0	1,095.7	1,051.9	43.8	-122.3
<b>EXECUTIVE OFFICE</b>	Regular	74.2	54.5	56.6	-2.1	-19.7
	Overtime	0.0	0.0	0.0	0.0	0.0
	Total	74.2	54.5	56.6	-2.1	-19.7
<b>INSURANCE AND FINANCIAL SERV</b>	Regular	337.0	299.8	293.4	6.4	-37.2
	Overtime	0.0	0.2	0.2	0.0	0.2
	Total	337.0	300.0	293.6	6.4	-37.0
<b>LICENSING AND REGULATORY AFF</b>	Regular	2,163.3	1,864.6	2,375.7	-511.1	-298.7
	Overtime	0.0	4.7	15.7	-11.0	4.7
	Total	2,163.3	1,869.3	2,391.5	-522.2	-294.0
<b>MDHHS - COMMUNITY HEALTH</b>	Regular	3,932.6	3,072.6	2,954.5	118.1	-860.0
	Overtime	0.0	228.7	204.8	23.9	228.7
	Total	3,932.6	3,301.3	3,159.3	142.0	-631.3
<b>MDHHS - HUMAN SERVICES</b>	Regular	11,504.4	10,554.9	10,494.9	60.0	-949.5
	Overtime	0.0	82.6	90.1	-7.5	82.6
	Total	11,504.4	10,637.5	10,585.0	52.5	-866.9
<b>MILITARY &amp; VETERAN AFFAIRS</b>	Regular	888.5	725.1	710.4	14.7	-163.4
	Overtime	0.0	29.0	23.5	5.6	29.0
	Total	888.5	754.1	733.8	20.3	-134.4
<b>NATURAL RESOURCES</b>	Regular	2,229.8	2,092.1	1,983.1	109.0	-137.7
	Overtime	0.0	33.4	35.1	-1.6	33.4
	Total	2,229.8	2,125.5	2,018.1	107.4	-104.3

Comments: Regular FTEs are the number of full-time equated positions based on regular time pay codes (total regular employee hours worked divided by 80). Overtime FTEs are the number of full-time equated positions based on overtime pay codes (total overtime hours worked divided by 80). Overtime FTEs are not appropriated as a separate category. Appropriated Position Figures are provided by DTMB, State Budget Office.

Source: Michigan Civil Service Commission MPR-0160

**STATE OF MICHIGAN**  
**Full-Time Equated Position Report by Department**  
**Fiscal Year 2015-16 Summary**

Department		Fiscal Year 2016 Appropriated FTE Positions (A)	Fiscal Year 2016 Average FTE Positions (B)	Fiscal Year 2015 Average FTE Positions (C)	FY 2015 and FY 2016 Difference (B - C)	FY 2016 Average and Appropriated Difference (B - A)
STATE	Regular	1,587.0	1,413.4	1,379.7	33.7	-173.6
	Overtime	0.0	12.2	9.3	2.9	12.2
	Total	1,587.0	1,425.6	1,389.0	36.6	-161.4
STATE POLICE	Regular	3,131.0	2,722.3	2,577.7	144.7	-408.7
	Overtime	0.0	200.2	159.5	40.7	200.2
	Total	3,131.0	2,922.5	2,737.2	185.3	-208.5
TALENT & ECONOMIC DEVELOPMENT	Regular	1,613.0	1,202.0	0.0	1,202.0	-411.0
	Overtime	0.0	1.0	0.0	1.0	1.0
	Total	1,613.0	1,203.0	0.0	1,203.0	-410.0
TECH, MGMT AND BUDGET	Regular	2,398.0	2,820.7	2,680.9	139.8	422.7
	Overtime	0.0	37.0	38.3	-1.3	37.0
	Total	2,398.0	2,857.7	2,719.2	138.5	459.7
TRANSPORTATION	Regular	2,912.3	2,656.4	2,563.3	93.1	-255.9
	Overtime	0.0	117.7	109.0	8.7	117.7
	Total	2,912.3	2,774.1	2,672.3	101.8	-138.2
TREASURY	Regular	1,901.5	1,625.4	1,543.1	82.4	-276.1
	Overtime	0.0	16.2	12.6	3.6	16.2
	Total	1,901.5	1,641.6	1,555.7	85.9	-259.9
<b>STATEWIDE TOTALS</b>	<b>Regular</b>	<b>52,200.9</b>	<b>46,783.9</b>	<b>44,793.4</b>	<b>1,990.5</b>	<b>-5,417.0</b>
	<b>Overtime</b>	<b>0.0</b>	<b>1,570.4</b>	<b>1,568.9</b>	<b>1.5</b>	<b>1,570.4</b>
	<b>Total</b>	<b>52,200.9</b>	<b>48,354.3</b>	<b>46,362.3</b>	<b>1,992.0</b>	<b>-3,846.6</b>

Comments: Regular FTEs are the number of full-time equated positions based on regular time pay codes (total regular employee hours worked divided by 80). Overtime FTEs are the number of full-time equated positions based on overtime pay codes (total overtime hours worked divided by 80). Overtime FTEs are not appropriated as a separate category. Appropriated Position Figures are provided by DTMB, State Budget Office.

Source: Michigan Civil Service Commission MPR-0160

**STATE OF MICHIGAN**  
**NUMBER AND PERCENT OF ACTIVE CLASSIFIED EMPLOYEES BY DEPARTMENT**  
**PRIOR AND CURRENT FISCAL YEARS**

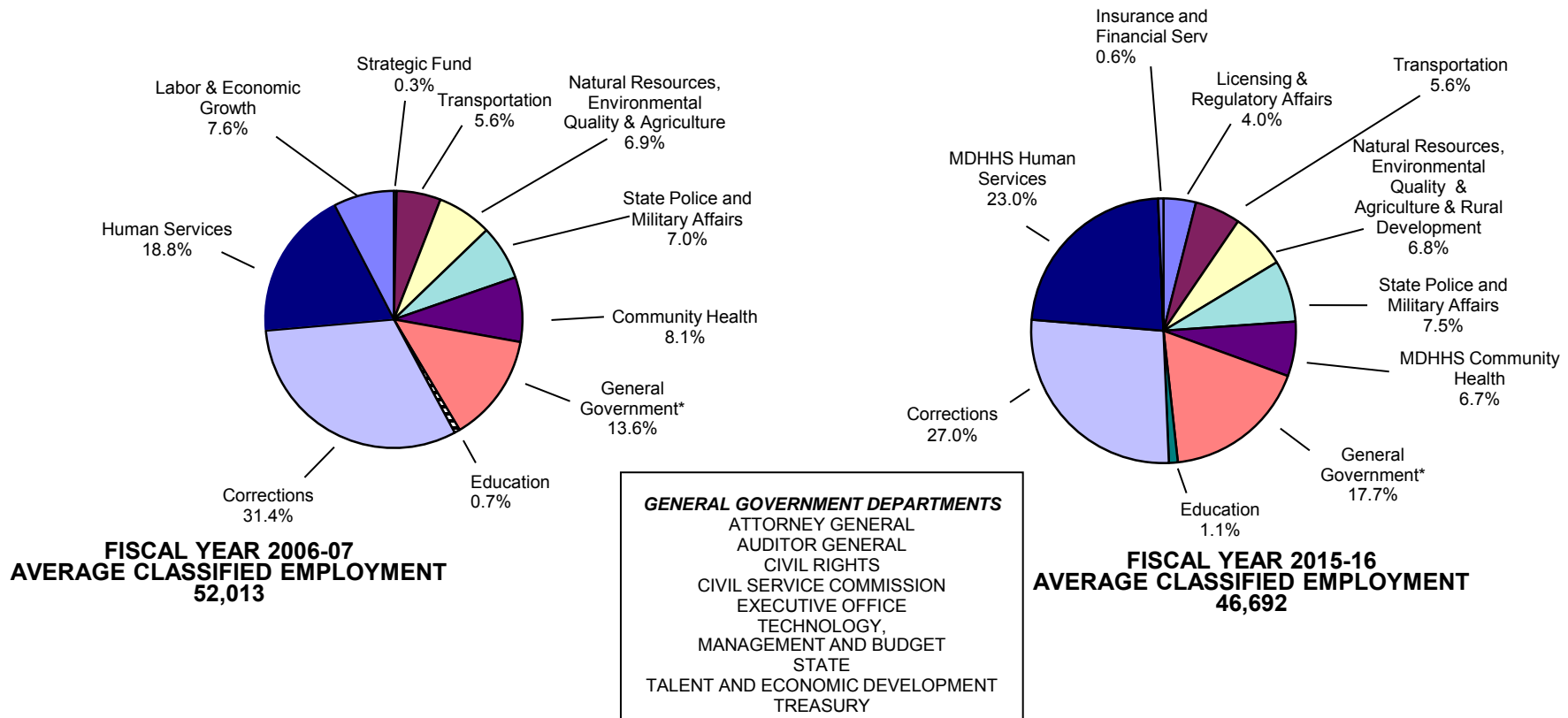
Department	2014 - 2015		2015 - 2016	
	Number of Employees	Percent of Total Classified Employees	Number of Employees	Percent of Total Classified Employees
AGRICULTURE AND RURAL DVLP MNT	416.0	0.9 %	430.0	0.9 %
ATTORNEY GENERAL	479.0	1.0 %	482.0	1.0 %
AUDITOR GENERAL	149.0	0.3 %	158.0	0.3 %
CIVIL RIGHTS	96.0	0.2 %	88.0	0.2 %
CIVIL SERVICE COMMISSION	425.0	0.9 %	430.0	0.9 %
CORRECTIONS	12,949.0	26.5 %	12,307.0	25.3 %
EDUCATION	523.0	1.1 %	515.0	1.1 %
ENVIRONMENTAL QUALITY	1,124.0	2.3 %	1,135.5	2.3 %
EXECUTIVE OFFICE	59.0	0.1 %	59.0	0.1 %
INSURANCE AND FINANCIAL SERV	313.0	0.6 %	305.0	0.6 %
LICENSING & REGULATORY AFFAIRS	1,923.0	3.9 %	1,954.0	4.0 %
MDHHS-COMMUNITY HEALTH	3,118.0	6.4 %	3,169.0	6.5 %
MDHHS-HUMAN SERVICES	10,818.5	22.1 %	10,859.0	22.3 %
MILITARY & VETERAN AFFAIRS	772.5	1.6 %	758.5	1.6 %
NATURAL RESOURCES	2,799.0	5.7 %	2,837.0	5.8 %
STATE	1,582.0	3.2 %	1,541.0	3.2 %
STATE POLICE	2,716.0	5.6 %	2,908.0	6.0 %
TALENT & ECONOMIC DEVELOPMENT	1,345.0	2.7 %	1,236.0	2.5 %
TECHNOLOGY, MANAGEMENT & BUDGET	2,906.0	5.9 %	2,977.0	6.1 %
TRANSPORTATION	2,739.0	5.6 %	2,764.0	5.7 %
TREASURY	1,668.0	3.4 %	1,691.0	3.5 %
<b>TOTAL:</b>	<b>48,920.0</b>	<b>100.0 %</b>	<b>48,604.0</b>	<b>100.0 %</b>

Comments: This report reflects classified employees who are full-time, part-time, permanent-intermittent, limited-term, seasonal, noncareer, or on workers' compensation in primary positions only. Job-share positions are those occupied by two or more individuals scheduled to share a job by performing the duties which would normally be assigned to one employee. Individuals sharing jobs can be part-time, permanent-intermittent, limited-term, seasonal, noncareer, or on workers' compensation. For this report, the actual number of employees who job share are halved.

Statewide, the number of classified employees decreased by 316 from September 26, 2015 to September 24, 2016.

**STATE OF MICHIGAN  
BREAKDOWN OF ACTIVE CLASSIFIED EMPLOYMENT AVERAGES STATEWIDE  
Fiscal Years 2006-07 and 2015-16 Compared**

Graph 1-3



Comments: Statewide, average classified employment decreased by 5,321 positions (10%) from FY 2006-07 to FY 2015-16. Beginning in FY 2011-12, this report reflects classified employees who are full-time, part-time, permanent-intermittent, limited-term, seasonal, noncareer, or on workers' compensation in primary positions only, except for the following noncareer appointments: STUDENT ASSISTANT-E, TRANSPORTATION AIDE-E, and STATE WORKER. As of September 24, 2016, these positions represent 90.5% of all noncareer appointments. Job share positions are those occupied by two or more individuals scheduled to share a job by performing duties that would normally be assigned to one employee. For this report, the number of employees who job share is halved.

Source: Michigan Civil Service Commission HWF09

**STATE OF MICHIGAN**  
**AVERAGE NUMBER OF ACTIVE CLASSIFIED EMPLOYEES BY DEPARTMENT**  
**FISCAL YEARS 2006-07 THROUGH 2015-16**

Table 1-4

<b>DEPARTMENT</b>	<b>06-07</b>	<b>07-08</b>	<b>08-09</b>	<b>09-10</b>	<b>10-11</b>	<b>11-12</b>	<b>12-13</b>	<b>13-14</b>	<b>14-15</b>	<b>15-16</b>
Agriculture & Rural Development <sup>6</sup>	535.4	521.1	529.0	446.7	393.1	387.4	400.9	396.8	405.4	411.5
Attorney General	517.0	495.8	493.9	460.6	433.7	461.6	478.5	489.9	481.6	477.4
Auditor General	137.9	137.7	134.8	131.5	133.7	133.4	139.8	134.2	137.2	150.2
Civil Rights	119.2	117.4	112.0	95.0	90.4	94.3	91.7	91.0	93.7	92.0
Civil Service Commission <sup>1</sup>	205.7	537.9	525.8	488.3	413.7	405.3	415.9	414.0	413.6	415.5
Community Health	4,225.0	3,964.2	4,074.7	3,873.1	3,447.6	3,012.6	3,113.4	3,127.9	--	--
Corrections	16,357.0	15,944.2	15,762.2	14,942.8	14,222.5	13,541.0	13,259.4	12,766.0	12,554.5	12,599.8
Education	369.3	379.5	404.9	444.5	446.1	475.5	517.7	517.5	515.3	506.6
Environmental Quality <sup>4</sup>	1,423.1	1,354.3	1,330.0	1,283.0	591.0	1,108.9	1,102.2	1,099.1	1,101.2	1,108.0
Executive Office	43.7	46.0	45.4	40.9	37.8	50.9	53.6	58.3	59.8	56.2
History Arts and Libraries <sup>2</sup>	195.8	190.5	181.7	--	--	--	--	--	--	--
Human Services	9,759.1	9,581.8	10,168.0	10,414.0	10,364.6	11,058.1	11,771.7	11,387.6	--	--
Information Technology	1,712.0	1,670.0	1,708.9	1,720.4	--	--	--	--	--	--
Insurance and Financial Serv <sup>8</sup>	--	--	--	--	--	--	--	291.9	304.7	302.1
Labor & Economic Growth <sup>3</sup>	3,967.3	3,781.3	4,055.5	--	--	--	--	--	--	--
Licensing & Regulatory Affairs <sup>3</sup>	--	--	--	4,297.6	3,727.1	3,758.3	2,898.8	2,525.0	2,120.0	1,847.2
Management and Budget <sup>5</sup>	971.1	937.9	966.9	931.3	--	--	--	--	--	--
MDHHS-Community Health	--	--	--	--	--	--	--	--	3,091.9	3,111.0
MDHHS-Human Services	--	--	--	--	--	--	--	--	10,954.1	10,746.8
Military and Veterans Affairs	933.7	921.2	926.4	897.3	890.6	885.5	800.7	771.7	757.0	749.8
Natural Resources <sup>4</sup>	1,627.8	1,564.0	1,606.6	1,629.0	858.6	1,555.3	1,530.2	1,553.7	1,612.5	1,665.4
Natural Resources & Environment <sup>4</sup>	--	--	--	--	1,197.7	--	--	--	--	--
State	1,621.8	1,535.1	1,447.0	1,372.2	1,263.3	1,278.7	1,290.0	1,308.2	1,321.2	1,324.5
State Police	2,657.3	2,585.6	2,621.7	2,547.8	2,395.2	2,360.4	2,501.3	2,616.2	2,707.3	2,775.2
Strategic Fund <sup>7</sup>	174.3	177.0	192.5	196.7	134.7	636.1	650.6	630.8	--	--
Talent & Economic Development <sup>9</sup>	--	--	--	--	--	--	--	--	1,006.3	1,252.7
Technology, Management & Budget <sup>5</sup>	--	--	--	--	2,383.7	2,461.2	2,586.8	2,673.9	2,789.2	2,873.8
Transportation	2,894.5	2,854.0	2,891.6	2,844.2	2,638.9	2,636.5	2,570.3	2,572.7	2,570.1	2,600.3
Treasury	<u>1,564.6</u>	<u>1,502.1</u>	<u>1,519.4</u>	<u>1,557.7</u>	<u>1,753.8</u>	<u>1,508.0</u>	<u>1,565.9</u>	<u>1,576.7</u>	<u>1,591.7</u>	<u>1,626.1</u>
<b>TOTAL</b>	<b>52,012.6</b>	<b>50,798.6</b>	<b>51,698.9</b>	<b>50,614.6</b>	<b>47,817.8</b>	<b>47,809.0</b>	<b>47,739.4</b>	<b>47,003.1</b>	<b>46,588.3</b>	<b>46,692.1</b>

Footnotes: <sup>1</sup> Civil Service positions increased in FY 2007-08 due to creation of the MI HR Service Center. The Department of Civil Service was renamed the Civil Service Commission and human-resources staff were consolidated into the Civil Service Commission under Executive Order 2007-30. Totals in this report reflect the human-resources consolidation beginning in FY 2007-08.

<sup>2</sup> The Department of History, Arts and Libraries was abolished by Executive Order 2009-36, effective October 1, 2009.

<sup>3</sup> The Department of Labor & Economic Growth (DLEG) was renamed the Department of Energy, Labor & Economic Growth (DELEG) by Executive Order 2008-20. The Department of Energy, Labor & Economic Growth (DELEG) was renamed the Department of Licensing and Regulatory Affairs by Executive Order 2011-4, effective April 25, 2011.

<sup>4</sup> In FY 2009-10, the Departments of Natural Resources and Environmental Quality were transferred by Executive Order 2009-45 to the newly created Department of Natural Resources & Environment, effective January 17, 2010. In FY 2010-11, the Departments of Natural Resources and Environmental Quality were recreated by Executive Order 2011-1, effective March 13, 2011.

<sup>5</sup> In FY 2009-10, the Departments of Information Technology and Management and Budget were transferred by Executive Order 2009-55 to the newly created Department of Technology, Management & Budget, effective March 21, 2010. Actions to combine these agencies for reporting purposes were not completed until October 1, 2010.

<sup>6</sup> In FY 2010-11, the Department of Agriculture was renamed the Department of Agriculture and Rural Development by Executive Order 2011-2, effective March 13, 2011.

<sup>7</sup> In FY 2010-11, the Michigan State Housing Development Authority (MSHDA) was transferred by Executive Order 2011-4 from the Department of Treasury to the Michigan Strategic Fund, effective April 25, 2011. Actions to combine these agencies for reporting purposes were not completed until October 2, 2011.

<sup>8</sup> In FY 2012-13, the Department of Insurance and Financial Services was established by Executive Order 2013-1, effective October 1, 2013.

<sup>9</sup> In FY 2014-15, the Department of Talent and Economic Development was established by Executive Order 2014-12, effective February 17, 2015. In FY 2014-15, the Workforce Development Agency, Unemployment Insurance Agency, Michigan State Housing Development Authority (MSHDA), State Land Bank Authority, and Michigan Strategic Fund were transferred to the Department of Talent and Economic Development by Executive Order 2014-12, effective February 17, 2015.

Comments: Starting in FY 2011-12, this report reflects classified employees who are full-time, part-time, permanent-intermittent, limited-term, seasonal, noncareer, or on workers' compensation in primary positions only, except for the following noncareer appointments: STUDENT ASSISTANT-E, TRANSPORTATION AIDE-E, and STATE WORKER. These positions represent 90.5% of all noncareer appointments at the end of FY 2015-16. The count of job share employees is halved. For fiscal-year-to-date-average reports, agencies in the Department of Talent and Economic Development, effective February 17, 2015, are included for the entire fiscal year.

Source: Michigan Civil Service Commission HWF09