

Michigan Career and Technical Education Facts 2019-2020

Our Vision: Michigan's CTE system will provide learners with access to equitable, high-quality secondary and postsecondary CTE programs aligned to rigorous academic and technical standards, and career ready practices.



111,073

students were enrolled in 2,134 secondary Career and Technical Education (CTE) programs.



1,542

students were enrolled in 180 CTE Early Middle College (EMC) programs.

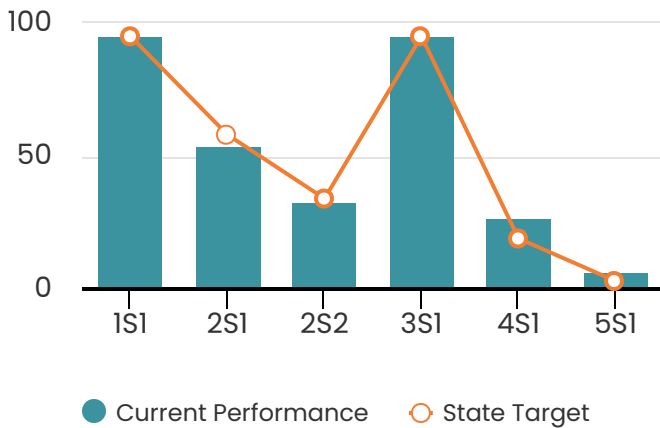


125,707

students participated in Michigan postsecondary institutions in 463 CTE programs.

Michigan CTE Achievement 2019-2020

2019-20 Michigan CTE Secondary Core Performance Indicators



- 1S1: Four-Year Graduation Rate
- 2S1: Academic Proficiency in Reading/Language Arts
- 2S2: Academic Proficiency in Mathematics
- 3S1: Post-program Placement Rate
- 4S1: Nontraditional Concentration
- 5S1: Postsecondary Credential Attainment

More detailed information about Perkins V Core Performance Indicators data can be found here:
<http://analytics.cteis.com/Perkins-CPIs-Race-and-Gender/Perkins-V-Race-and-Gender-CPI>

95.6%

Four-year graduation rate for students who are CTE concentrators.



Compared to Michigan's statewide four-year graduation rate of

81.4%

Credentials of Value

1,795



CTE concentrators attained pre-approved recognized postsecondary credentials.

"Recognized postsecondary credentials" for Perkins V reporting are identified through a rigorous process implemented by collaborative consortia of secondary and postsecondary Perkins eligible recipients and employers.

https://www.michigan.gov/mde/0,4615,7-140-2629_82356_94990-512465--,00.html



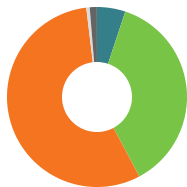
2019-2020 Follow-up of 2018-19 CTE Concentrators

A statewide survey to track CTE students' placement in the 2nd quarter after they exit high school

31,062

CTE concentrators responded to the follow-up survey (response rate 85.2%).

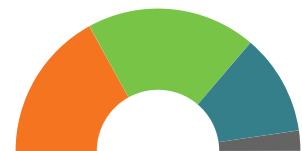
Total placement rate was **95.5%**



Enrollment in Postsecondary Education N=22,516

- Business/Trade/Career Center
- Community College
- College/University
- Military
- Other

Education and Employment Status
N=31,062



- BOTH Continuing Education and Employed
- Continuing Education but NOT Employed
- Employed but NOT Continuing Education
- NOT Continuing Education or NOT Employed

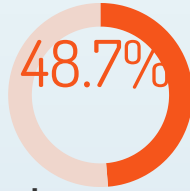
73.8%

of CTE concentrators surveyed reported that they were using the skills learned in their CTE programs for continuing education or in their current job.

Michigan CTE Student Special Populations 2019-2020

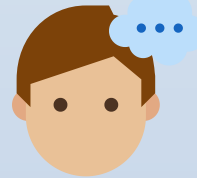
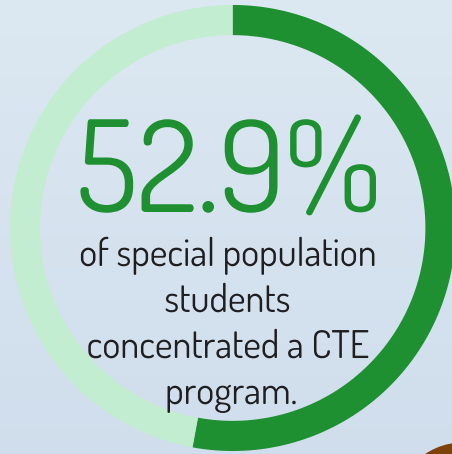
54,131

special populations students were enrolled in a CTE program (48.7% of all CTE students).



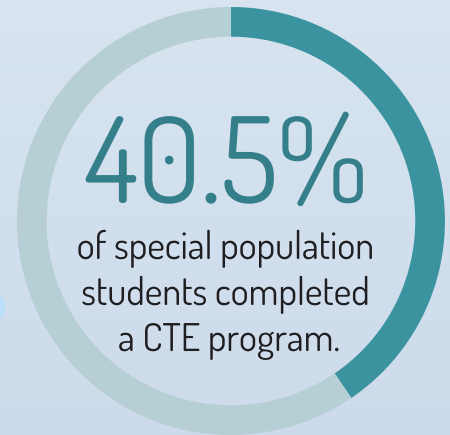
52.9%

of special population students concentrated a CTE program.



40.5%

of special population students completed a CTE program.



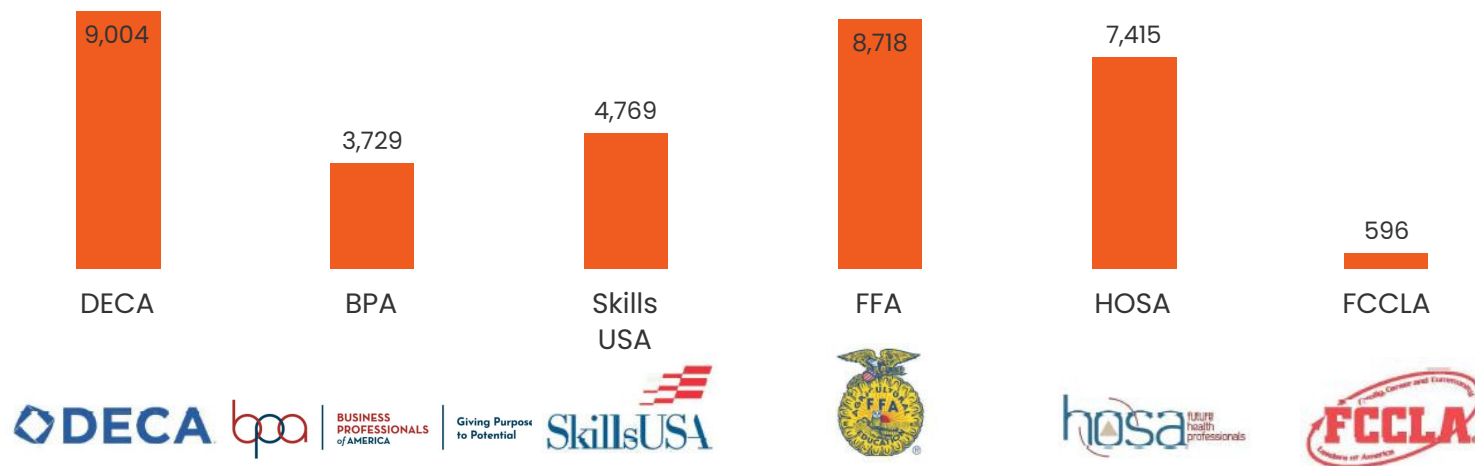
Special Population Category	Enrollment (Duplicated Count)	Concentrator (Duplicated Count)	Completer (Duplicated Count)
Economically Disadvantaged	47,057	25,166	19,185
Students with Disabilities	12,118	5,948	4,351
English Learner	4,670	2,238	1,815
Single Parent	172	110	102
Displaced Homemaker	<10	<10	<10
Migrant	47	22	15
Non-traditional	20,736	11,957	9,219

More About Michigan CTE Students 2019-2020



34,231

students are members of a Career and Technical Student Organization (CTSO).



CTE Breaking Traditions Awards

62 students earned 2020 Breaking Traditions Awards:
2 Excellence Awards, 17 Merit Awards, 43 Recognition Awards

★ ★ ★ ★ ★



What are CTE Breaking Traditions Awards?

The Breaking Traditions Awards are an annual award ceremony used to honor and recognize students who have been successful in completing a CTE program that is nontraditional for their gender. The term nontraditional is directly related to Perkins legislation and is defined as a CTE program in which less than 25% of the workforce in that area is comprised of that gender. For example, Welding is nontraditional for females as less than 25% of the workforce in welding is female.



What are the goals of the Breaking Traditions Awards?

The goals of the Breaking Traditions Awards are to promote nontraditional students, recruit students to programs, and assist schools in achieving their core performance indicator for nontraditional concentration. The students who receive this reward are seen as mentors in their schools.

1,986 secondary CTE instructors facilitated learning for Michigan high school students.

Michigan Secondary Career and Technical Education Enrollment 2019-2020

Career Clusters	Number of Programs	Enrollment (Unduplicated)	Concentrators (Unduplicated)	Completers (Unduplicated)
Agriculture, Food & Natural Resources	124	8,624	4,428	2,817
Architecture & Construction	175	7,891	4,852	3,626
Arts, Audio/Video Technology & Communications	111	6,429	3,809	3,201
Business, Management & Administration	185	11,946	5,759	4,512
Education & Training	58	2,230	1,418	1,215
Finance	181	6,108	3,192	2,691
Government & Public Administration	7	773	278	197
Health Science	142	11,731	9,512	8,108
Hospitality & Tourism	87	5,429	2,964	2,085
Human Services	31	1,068	703	459
Information Technology	263	10,293	5,785	4,536
Law, Public Safety, Corrections & Security	51	2,248	1,680	1,430
Manufacturing	179	6,623	4,092	3,009
Marketing, Sales & Service	179	15,289	8,456	6,912
Science, Technology, Engineering & Mathematics	162	6,562	3,725	2,990
Transportation, Distribution & Logistics	174	7,719	3,617	2,533
Energy	4	110	95	95



57.9%

of CTE students concentrated in a CTE program.

A concentrator is a student who has successfully completed more than half of a CTE program.



45.4%

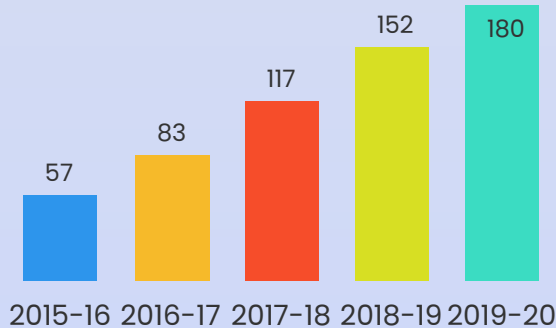
of CTE students completed in a CTE program.

A completer is a student who has successfully completed all standards in a CTE program.



Michigan CTE Early Middle College Enrollment 2019-2020

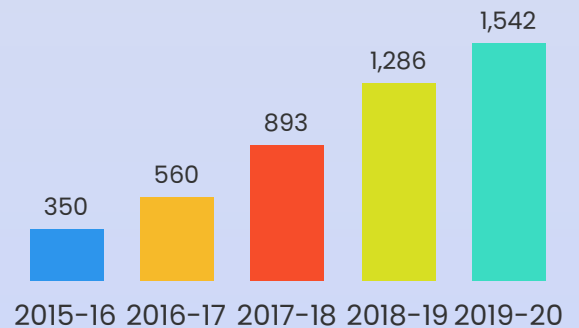
Career Clusters	Number of Programs	Enrollment (Unduplicated)	Concentrators (Unduplicated)	Completers (Unduplicated)
Agriculture, Food & Natural Resources	4	49	34	32
Architecture & Construction	9	24	18	8
Arts, Audio/Video Technology & Communications	5	25	20	12
Business, Management & Administration	12	93	61	38
Education & Training	4	12	11	11
Finance	6	24	21	20
Health Science	20	392	377	305
Hospitality & Tourism	6	21	10	10
Information Technology	32	246	215	204
Law, Public Safety, Corrections & Security	6	49	41	39
Manufacturing	29	233	207	168
Marketing, Sales & Service	13	82	76	72
Science, Technology, Engineering & Mathematics	22	251	217	137
Transportation, Distribution & Logistics	12	41	30	27



180

CTE EMC programs.

An 18.4% increase compare to last year.
A 215.8% increased compare to 5 years ago.



1,542

students enrolled in a CTE EMC program.

A 20.0% increase compare to last year.
A 340.6% increase compare to 5 years ago.

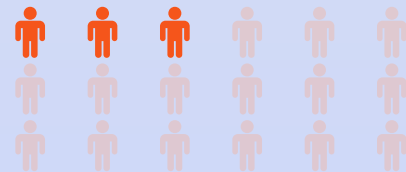
Michigan Postsecondary Career and Technical Education Enrollment 2019-2020

Career Cluster	Number of Programs	Concentrators	Awards Conferred	Exiters
Agriculture, Food & Natural Resources	29	397	125	306
Architecture & Construction	28	3,971	602	1,805
Arts, Audio/Video Technology & Communications	52	3,319	529	1,582
Business Management & Administration	30	12,278	2,209	6,596
Education & Training	42	2,229	366	1,243
Finance	9	2,498	403	1,355
Government & Public Administration	3	0	0	0
Health Science	75	22,450	5,599	10,757
Hospitality & Tourism	14	1,573	431	910
Human Services	20	2,631	392	1,309
Information Technology	24	4,908	820	2,462
Law, Public Safety, Corrections & Security	20	5,760	1,227	3,107
Manufacturing	48	7,325	1,403	3,765
Marketing	11	857	147	524
Science, Technology, Engineering & Mathematics	36	713	201	424
Transportation, Distribution & Logistics	22	2,014	362	888



58.0%

of students concentrated in a postsecondary CTE program.



11.8%

of students have awards conferred in a postsecondary CTE program.