

HOW TO READ YOUR CHILD'S SCORE REPORT



Michigan schools assessed the progress of students in grade 11 by using a set of assessments called the Michigan Merit Exam (MME). The MME includes the following components:

- SAT® college entrance exam
- ACT® WorkKeys® work skills assessment, and
- M-STEP (Michigan Student Test of Educational Progress) in science and social studies.

These three components provide a measure of individual performance based on Michigan's high school content standards as well as career- and college-readiness.

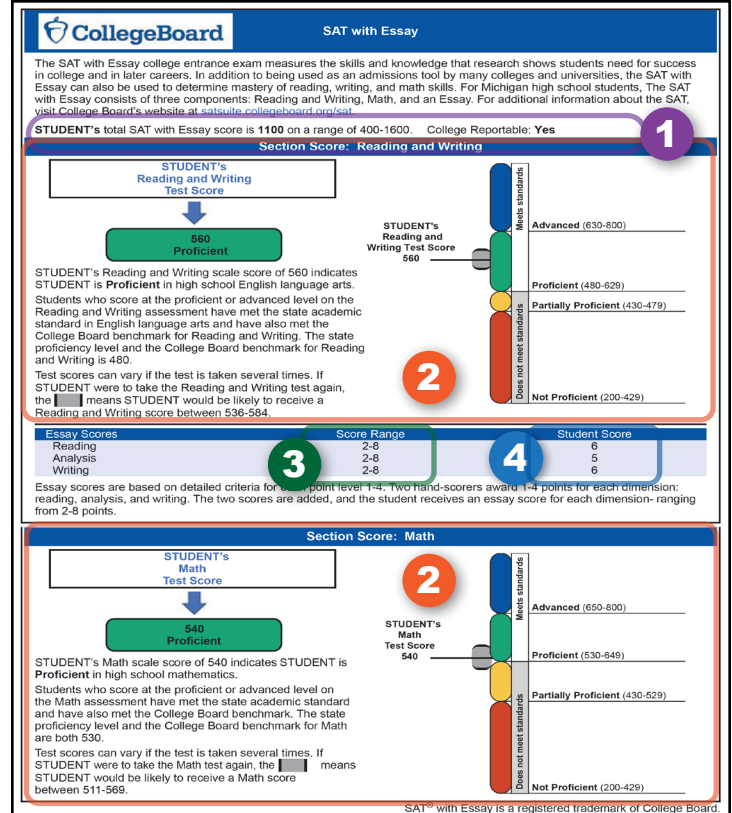
The report you receive will provide a snapshot of your student's learning progress. Teachers use the results of the MME along with tools and other strategies to identify learning and achievement levels. Talk with your student's teacher regularly about how your student is doing and how you can support their learning at home. This creates opportunities for schools and parents to collaborate and to discuss ideas to help every student in Michigan be career- and college-ready by the time they graduate. To learn more, visit the [MME web page](http://www.michigan.gov/mme) (www.michigan.gov/mme).

Score Report Components

College Entrance Examination: SAT with Essay

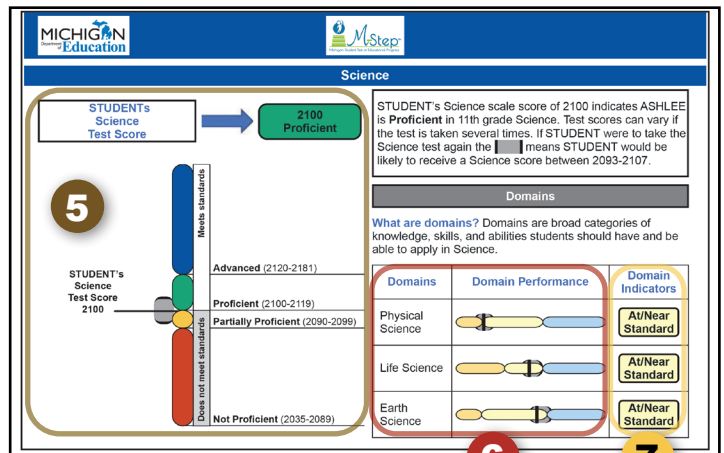
(Also serves as the English language arts and mathematics assessment for the MME)

- 1 Total Score** — This is your student's combined score for both subjects tested on the SAT with Essay: Reading and Writing, and Math.
- 2 Student Performance Level** — Students receive a numerical scale score for each subject tested, and, based on that score, are assigned one of four performance levels: Not Proficient, Partially Proficient, Proficient, or Advanced.
- 3 Score Ranges** — The score range represents the lowest and highest possible scores in the essay portion.
- 4 Student Score** — This column lists the student score for the essay portion of the SAT.



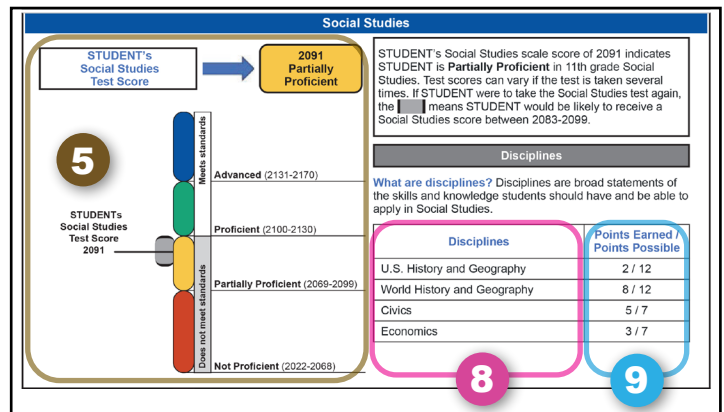
M-STEP results: Grade 11 Science

- 5 Student Overall Performance Level and Scale Score** — Students receive a numerical scale score and, based on that score, are assigned one of four performance levels: Not Proficient, Partially Proficient, Proficient, or Advanced. This section of the report provides your student's numerical score and performance level.
- 6 Domains** — Assessments in science include sub-categories, called domains, which relate directly to Michigan's learning standards for those subjects. This section lists the domains.
- 7 Domain Performance Indicators** — This column displays the Performance Indicator that a student earned for each of the three Domains. The three Performance Indicators are Below Standard, At/Near Standard, and Above Standard.



M-STEP results: Grade 11 Social Studies

- 8 Disciplines** — Assessments in social studies include sub-categories, called disciplines, which relate directly to Michigan's learning standards for those subjects. This section lists the disciplines.
- 9 Points Earned/Points Possible** — This column describes the number of test items that a student answered correctly (left-side number) compared to the total number of items tested (right-side number) in each domain for social studies. For example, a student whose point score is 5/7 correctly answered five of seven items.



ACT WorkKeys Results

This assessment measured performance in three areas employers consider critical to job success: Workplace Documents, Applied Math, and Graphic Literacy.

10 **Level Range** — This shows the lowest and highest possible score for each assessment area, so you can see how well your student’s score compares to the minimum and maximum scores possible in each area.

10

ACT WorkKeys Test	Level Range	Level Earned
Workplace Documents	3-7	4
Applied Math	3-7	5
Graphic Literacy	3-7	6

11

XXXXX's National Career Readiness Certificate

Silver

12

11 **Earned Level/Certification** — This is the score the student earned on this test.

12 **National Career Readiness Certificate® (NCRC)** — Students may qualify for a NCRC based on ACT WorkKeys level scores earned during the Spring MME. The NCRC is a valuable credential for students who will start their career or work while they go to college. Eligibility is determined as follows:

- a **bronze** credential requires at least a Level 3 on all three ACT WorkKeys tests
- a **silver** credential requires at least a Level 4 on all three ACT WorkKeys tests
- a **gold** credential requires at least a Level 5 on all three ACT WorkKeys tests
- a **platinum** credential requires at least a Level 6 on all three ACT WorkKeys tests