



# SPOTLIGHT

NEWS

COLLEGE  
BOARDWIN  
LEARNINGASSESSMENT  
LITERACYTRAINING &  
CONFERENCESIMPORTANT  
DATES

REMINDERS

CONTACT  
US

As classrooms wind down for the Thanksgiving holiday, the Spotlight signs off for a short break next week. Here's to every Michigan educator — may your Thanksgiving be warm, restorative, and filled with the joy of community and well-earned rest.



Enjoying this newsletter?  
Click [here](#) to subscribe to the  
Spotlight.

#### We Want to See Your Best Holiday Photos!

Help us shine a Spotlight on your school or district by sharing your favorite holiday festivities, traditions, performances, and celebrations. Here's how to send us your photo:

- Make sure you have permission to share the photo (check your school/district's policy)
- Add a short caption (up to 250 characters)
- Include a photo credit (or we'll credit your school or district)
- Email everything to [MDE-OEAA@michigan.gov](mailto:MDE-OEAA@michigan.gov)

Let's celebrate the season of joy together—send us your festive photo today!



# TABLE OF CONTENTS

[NEWS INFO](#).....2

[COLLEGE BOARD INFO](#).....8

[WIN LEARNING INFO](#).....9

[TRAINING & CONFERENCES](#).....10

[IMPORTANT DATES](#).....11

[OEAA ABBREVIATIONS](#).....12

[OEAA PHONE TREE OPTIONS](#).....12

# NEWS INFO

## 2024-25 School Index Results Now Publicly Available on MI School Data






Michigan School Index reports and data for 2024-25 are now publicly available on [MI School Data](http://www.mischooldata.org/school-index/) (www.mischooldata.org/school-index/). The embargo for 2024-25 school accountability data was lifted upon public release today, Thursday, November 20, 2025.



Supporting resources for the School Index, including aggregate public result files, can be found here [www.mi.gov/mde-schoolindex](http://www.mi.gov/mde-schoolindex).

Please be aware that when sharing or communicating School Index information, that any student datafiles or screenshots of the School Index reports downloaded from MI School Data by a logged-in secure user are never to be shared publicly. Reports and files visible to logged-in users of the site contain unsuppressed and potentially personally identifiable information.

### Icon Key

-  Now Available
-  Reminder
-  Deadline
-  Survey
-  Thank You

# NEWS INFO

## English Learner Growth Crosswalk Has Been Updated

The English Learner (EL) Growth Crosswalk has been updated and [posted](https://www.mi.gov/mde-EL) ([www.mi.gov/mde-EL](https://www.mi.gov/mde-EL)), under the section “EL Accountability & Data.” This document is designed to allow EL practitioners to navigate between two models of EL student growth measures and use whichever model best meets their situation. Those models are: (1) normative (Student Growth Percentiles; SGPs) and (2) criterion (Performance Level [PL] Change).

A quick reminder: Student growth measures look at a student’s progress over time. For students who will need multiple years to reach proficiency, which is true for most EL students, student growth measures offer a way to track progress toward the long-term goal of English proficiency.

## Now Available: 2025-26 Guide to State Assessments

The [2025-26 Guide to State Assessments](https://www.michigan.gov/mde/-/media/Project/Websites/mde/OEAA/General/Guide_to_State_Assessments.pdf) ([https://www.michigan.gov/mde/-/media/Project/Websites/mde/OEAA/General/Guide\\_to\\_State\\_Assessments.pdf](https://www.michigan.gov/mde/-/media/Project/Websites/mde/OEAA/General/Guide_to_State_Assessments.pdf)) is now available on all assessment web pages. This document includes information about all of the Spring 2026 summative assessments: M-STEP, PSAT 8/9, PSAT 10, SAT with Essay, WIN Work Readiness, MI-Access, WIDA, Early Literacy and Mathematics Benchmark Assessments, and the Michigan Benchmark Assessment law.



Information provided in this document includes:

- assessment calendars
- updates to assessments, systems, procedures, or policies for each assessment
- testing times
- available resources
- overviews of testing technology for online testing

# NEWS INFO

## Benchmark Assessment Reminders

First, thank you to all districts who have already completed [the short 4-question Benchmark Assessment Survey](https://www.surveymonkey.com/r/DZ8PLJP) (https://www.surveymonkey.com/r/DZ8PLJP). If your district has not completed the survey, **please do so by the end of day tomorrow, November 21, 2025.**



The survey results will be used to help the Michigan Department of Education and [Michigan Data Hub](https://www.midatahub.org) (MiDataHub) plan for the required data submissions and to better provide assistance if requested. This is needed because the NexSys application for districts seeking funding is not anticipated until early 2026 due to the delay in the budget process.

**Fall benchmark assessment results and Mode of Instruction data must be received by MiDataHub no later than December 19, 2025.**

There are a number of prerequisite technical tasks that must be completed to ensure the data are received and processed by MiDataHub, so it is critical that districts are already working to ensure the submission deadline is met. This applies to districts administering one or more of the following benchmark assessments:

- Curriculum Associates i-Ready
- Data Recognition Corporation (DRC)-provided Smarter Balanced Interim Assessments
- DRC-provided Early Literacy and Mathematics Benchmark Assessments
- NWEA Map
- Renaissance Star



For more information, the following resources are available:

- [Benchmark Assessment webpage](https://www.michigan.gov/mde/services/student-assessment/benchmark-assessments) (https://www.michigan.gov/mde/services/student-assessment/benchmark-assessments)
- [2025-26 Benchmark Assessments Fact Sheet and Frequently Asked Questions](https://www.michigan.gov/mde/-/media/Project/Websites/mde/OEAA/Benchmark-Assessments/Benchmark-Assessments-Fact-Sheet-and-FAQ.pdf) (https://www.michigan.gov/mde/-/media/Project/Websites/mde/OEAA/Benchmark-Assessments/Benchmark-Assessments-Fact-Sheet-and-FAQ.pdf)
- [Michigan Data Hub October 23, 2025 Webinar slide deck and recording](https://www.midatahub.org/support/trainings/) (https://www.midatahub.org/support/trainings/)

## Early Literacy and Mathematics Benchmark Assessments Winter 2026 Test Window

The Winter 2026 Early Literacy and Mathematics Benchmark Assessments testing window will be open January 5 – February 6, 2026. Students in grades K-2 who tested in Fall 2025 have been automatically pre-identified to the Winter 2026 Early Literacy and Mathematics Benchmark Assessment by the Office of Educational Assessment and Accountability (OEAA).

No action is necessary for students who tested in the Fall 2025 administration but will not test in the Winter 2026 administration. Students who did not test in the Fall 2025 administration must be pre-identified in the [OEAA Secure Site](https://www.michigan.gov/oeaa-secure) (www.michigan.gov/oeaa-secure).

The [Early Literacy and Mathematics Benchmark Test Administration Manual](https://www.michigan.gov/documents/mde/Early_Literacy_and_Mathematics_TAM_663326_7.pdf) (https://www.michigan.gov/documents/mde/Early\_Literacy\_and\_Mathematics\_TAM\_663326\_7.pdf) and Online Test Directions can be found on the [Early Literacy and Mathematics web page](https://www.michigan.gov/earlylitandmath) (https://www.michigan.gov/earlylitandmath) under the Current Assessment Administration section.

# NEWS INFO

## Clarification on Background Applications and the WIN Lockdown Browser Requirement

We want to provide an important clarification regarding the background applications guidance included in the recent WIN Technology Coordinator presentation.

**The WIN (Respondus) Lockdown Browser does **not** require all classroom management applications to be disabled.**

There was an error on slide 19 of the [WIN Technology Training PowerPoint](https://www.michigan.gov/mde/-/media/Project/Websites/mde/OEAA/MME/MI-PM-Tech-Training-Nov-2025-FINAL.pdf) (https://www.michigan.gov/mde/-/media/Project/Websites/mde/OEAA/MME/MI-PM-Tech-Training-Nov-2025-FINAL.pdf) that has been corrected. The corrected slide clarifies that districts are not required to shut down any classroom management or web filtering applications:

### Prohibited App Detection and Blocking

The lockdown browser is a special web browser used for taking online tests securely. It "locks down" the computer so students can't open other websites, apps, or tools while the test is in progress. When the lockdown browser launches, it will detect and block certain background apps. If any are running, users will see a prompt with options to automatically close the apps, **OR** exit the browser to close them manually.

LockDown Browser OEM - Version 2.1.3.06

You must close the following application before starting LockDown Browser:


Microsoft Teams (msteams.exe)

Do you want LockDown Browser to attempt to close this application for you?

**Blocked app types include:**

- Typing assistants and grammar checkers (e.g., Grammarly, Ginger Software, ProWritingAid)
- Remote Access/Remote Control Software (e.g., TeamViewer, AnyDesk, Remote PC)
- AI Features and Chatbots (e.g., Microsoft Copilot, Apple Intelligence, Google Gemini, Chat GPT)
- Collaboration Tools (e.g., Microsoft Teams, Zoom Google Chat and Meets)
- Screen Capture Software

**Note:** Districts are **not** required to shutdown Child Internet Protection Act (CIPA) classroom management applications that filter and monitor web content.



OEAA apologizes for the error and any confusion that has been caused. Be sure that your Technology Coordinator and staff are made aware of the requirements.

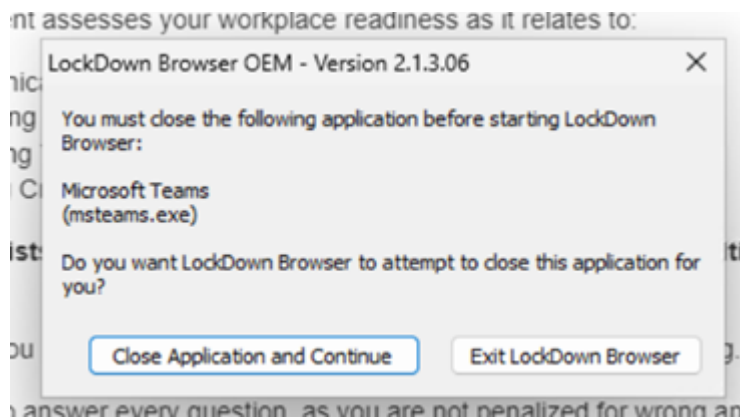
# NEWS INFO

## What is required?

Before starting a WIN Work Readiness assessment, users should ensure that background apps and system updates are disabled. These include:

- typing assistants and grammar checkers (such as Grammarly, Ginger Software, ProWritingAid)
- remote access/remote control software (such as TeamViewer, AnyDesk, Remote PC)
- AI features and chatbots (such as Microsoft Copilot, Apple Intelligence, Google Gemini, ChatGPT)
- collaboration tools (such as Microsoft Teams, Zoom, Google Chat and Meets)
- screen capture software

If an interfering application is open (even in the background), the lockdown browser will display a notification stating that the application must be closed before the lockdown browser is started:



## What this means for districts and users

- Districts are not required to shut down Child Internet Protection Act (CIPA) classroom management applications that filter and monitor web content.
- **It is very important that technology staff are made aware of this correction.**  
Our goal is to ensure smooth, secure testing experiences across all districts participating in WIN assessments.

# NEWS INFO

## Revised Alternate Content Expectations for Social Studies Open for Public Comment

In late 2019, the Michigan Board of Education approved revised K-12 content standards for social studies. Since that time, districts have been applying these changes to instruction, and the M-STEP assessment was realigned to these standards as well.

Now similar revisions are being applied to the language and organization of the alternate content expectations for social studies, to which the MI-Access Functional Independence (FI) social studies assessment is aligned.

The revised alternate content expectations for social studies primarily incorporate changes to reflect up-to-date language. For example, there is a shift to the use of “Indigenous Peoples” and “enslaved persons” in place of “Native Americans/American Indians” and “slaves”. Such changes follow the same revisions in language that were included in the revised K-12 social studies standards adopted in 2019.

A draft of these revised alternate content expectations can be found on the [MI-Access web page](http://www.michigan.gov/mi-access) (www.michigan.gov/mi-access) under the alternate content expectations link for social studies and science. The draft document – [alternate content expectations for social studies](https://www.michigan.gov/mde/services/student-assessment/mi-access/funct-ind/content-expectations-for-ela-math-social-studies-and-science) (https://www.michigan.gov/mde/services/student-assessment/mi-access/funct-ind/content-expectations-for-ela-math-social-studies-and-science) – is at the top of the page.

The public is welcome to review and provide comment on the revised content expectations for social studies that will serve as the foundation for the MI-Access FI social studies assessment. Public comment can be left using this [survey link](https://www.surveymonkey.com/r/MIA_SS_PUBLIC) (https://www.surveymonkey.com/r/MIA\_SS\_PUBLIC). Public comment will remain open until **4:00 p.m. on Friday, December 19, 2025.**

# COLLEGE BOARD INFO

## College Board's Interactive Checklist

College Board's interactive checklist tool launches December 1 with an initial welcome email to the School Test Coordinator. The optional interactive checklist provides automated email reminders about required tasks for the Spring 2026 SAT Suite implementation. School Test Coordinators may also log into the interactive check list tool to delegate tasks to other members of their team.

## District Test Coordinator Webinar

The District Test Coordinator Webinar was held on Thursday, November 6, 2025. This session covered updates, policies, and key dates for the Michigan-provided SAT with Essay, PSAT 10, and PSAT 8/9. View the [webinar recording here](#); the [presentation is available here](#).

## Important Dates

Item	Date(s)	Description
Interactive Checklist Available	Monday, December 1, 2025	An invitation will be emailed to school test coordinators for this optional online tool to keep track of and request one-click assistance with critical tasks for Spring 2026 testing.
<b>COMING SOON!</b> Services for Students with Disabilities Training for the Visually Impaired	Thursday, December 4, 2025 10:00-11:00 a.m.	<a href="https://collegeboard.zoom.us/webinar/register/WN_jMZwp-bW-SVmrCbUY0003KQ">Register here</a> ( <a href="https://collegeboard.zoom.us/webinar/register/WN_jMZwp-bW-SVmrCbUY0003KQ">https://collegeboard.zoom.us/webinar/register/WN_jMZwp-bW-SVmrCbUY0003KQ</a> )
<b>COMING SOON!</b> School Test Coordinator, Part 1	Monday, December 8, 2025 10:00-11:30 a.m.	<a href="https://collegeboard.zoom.us/webinar/register/WN_sDUF0nX-5Ry6IMUi3ELzpnQ">Register here</a> ( <a href="https://collegeboard.zoom.us/webinar/register/WN_sDUF0nX-5Ry6IMUi3ELzpnQ">https://collegeboard.zoom.us/webinar/register/WN_sDUF0nX-5Ry6IMUi3ELzpnQ</a> )
<b>COMING SOON!</b> Comparing and Contrasting Text-to-Speech and Screen Reader Accommodations	Thursday, December 11, 2025 10:00-10:45 a.m.	<a href="https://collegeboard.zoom.us/webinar/register/WN_J-jDXdCT-SHSC1Iop3zRR7g">Register here</a> ( <a href="https://collegeboard.zoom.us/webinar/register/WN_J-jDXdCT-SHSC1Iop3zRR7g">https://collegeboard.zoom.us/webinar/register/WN_J-jDXdCT-SHSC1Iop3zRR7g</a> )
2025-26 Training Events for School Testing Personnel	Various dates December through March	<a href="https://www.michigan.gov/mde/-/media/Project/Websites/mde/OEAA/MME/SAT-Suite/College-Board-Webinars-for-MDE-Spring-Implementation.pdf">Click here</a> ( <a href="https://www.michigan.gov/mde/-/media/Project/Websites/mde/OEAA/MME/SAT-Suite/College-Board-Webinars-for-MDE-Spring-Implementation.pdf">https://www.michigan.gov/mde/-/media/Project/Websites/mde/OEAA/MME/SAT-Suite/College-Board-Webinars-for-MDE-Spring-Implementation.pdf</a> ) for webinar details, including titles, dates, intended audience, and registration links.
Services for Students with Disabilities (SSD) Accommodations Request Deadline	Wednesday, February 18, 2026	Deadline to submit all known accommodations in SSD Online, to ensure they are processed and available well in advance of testing and that new students/accommodations identified after the deadline can be prioritized.
Student Rosters Available in the State Data Management System (SDMS) and Test Day Toolkit	Wednesday, February 18, 2026	Schools can confirm the accuracy of their student roster in SDMS and begin to prepare rooms in Test Day Toolkit, assigning students and staff to those rooms, as well as access test ticket information to facilitate student readiness checks and practice tests.

### Questions about the College Board Assessments (PSAT 8/9, PSAT 10, SAT)

**Call:** Michigan Educator Hotline at 866-870-3127 (Option 1)

**Email:** [michiganadministratorsupport@collegeboard.org](mailto:michiganadministratorsupport@collegeboard.org)

# WIN LEARNING INFO

Need assistance with WIN Learning?

Email: [mde-oeaa@michigan.gov](mailto:mde-oeaa@michigan.gov)

Call: 877-560-8378

Select Option 2, then Option 3

## WIN Michigan Resource Center

The [WIN Michigan Resource Center](https://www.winresourcecenter.com/Partnerships/mde) (<https://www.winresourcecenter.com/Partnerships/mde>) for the WIN Work Readiness Assessments is now available for testing coordinators to help prepare for spring testing.

The Resource Center includes recorded webinars and presentations, technical specifications for online testing, and a step-by-step navigation guide that walks through the administrative functions of the WIN Career Readiness System (CRS). Additional test preparation documents will continue to be posted to the Resource Center in the coming months.

### Standard Tools, Features, and Accommodations

Also included in the Resource Center is information about accommodations available for the WIN Work Readiness Assessments, as well as standard tools and features that are available to all test takers.

There are standard features on the online test that are available for all students:

- Formula sheet for Work Ready Math assessment
- Highlighting
- Magnification and adjustable font size
- Line reader
- Individual test administration

A Spanish translation of the test (both online and paper/pencil) is also available for students with English Learner needs.

Accommodations are available for students with an Individualized Education Program (IEP) or 504 plan:

- Extended time for test administration
- American Sign Language (ASL) interpretation of assessments
- Large print
- Oral administration, including a text-to-speech tool for online assessments

Complete lists of accommodations and tools can also be found on the [MME webpage](https://www.michigan.gov/mde/services/student-assessment/michigan-merit-examination-mme) (<https://www.michigan.gov/mde/services/student-assessment/michigan-merit-examination-mme>).

- [Accommodations](https://www.michigan.gov/mde/-/media/Project/Websites/mde/OEAA/MME/WIN-Accommodations-Chart.pdf) (<https://www.michigan.gov/mde/-/media/Project/Websites/mde/OEAA/MME/WIN-Accommodations-Chart.pdf>)
- [Standard tools and features](https://www.michigan.gov/mde/-/media/Project/Websites/mde/OEAA/MME/WIN-Assessment-Standard-Tools-and-Features.pdf) (<https://www.michigan.gov/mde/-/media/Project/Websites/mde/OEAA/MME/WIN-Assessment-Standard-Tools-and-Features.pdf>)

An introduction to [WIN Accommodations presentation](https://www.michigan.gov/mde/-/media/Project/Websites/mde/OEAA/MME/WIN-OFFICE-HOURS-NOV-19.pdf) (<https://www.michigan.gov/mde/-/media/Project/Websites/mde/OEAA/MME/WIN-OFFICE-HOURS-NOV-19.pdf>) is available on the [MME web page](http://www.michigan.gov/mme) ([www.michigan.gov/mme](http://www.michigan.gov/mme)).

# TRAINING & CONFERENCES

## Michigan Educational Research Association Announces Fall 2025 Conference

**November 24-25, 2025 | Bavarian Inn Lodge, Frankenmuth**

The Michigan Educational Research Association (MERA) Fall 2025 Conference is November 24–25 at the Bavarian Inn Lodge in Frankenmuth. Centered on the theme “AI and Beyond: Data, Policy, and Practice in Education,” the event will bring together educators, researchers, and policymakers to explore the impact of artificial intelligence, data use, and ethical research in education. Attendees will gain insights into innovative practices that advance teaching, learning, and policy development across Michigan.

Read the full article in the [Spotlight newsletter - October 9 issue, page 10](#) (<https://bit.ly/46VJ3zG>).



## DRC Technology Readiness Webinar

**December 3, 2025 | 10:00 - 11:00 a.m.**

The online Winter/Spring 2025 Data Recognition Corporation (DRC) INSIGHT Technology Readiness Training for Technology Coordinators (TCs) will be held 10:00 - 11:00 a.m., Wednesday, December 3, 2025.

This training session is targeted for both new and returning Technology Coordinators and focuses on important activities related to overall testing readiness. The session will include answers to the top 18-plus most commonly asked questions received by the Data Recognition Corporation Customer Service regarding site technology readiness.

### Microsoft Teams [Need help?](#)

[Join the meeting now](#)

**Meeting ID:** 270 832 034 019 8

**Passcode:** qi3RW38M

### Dial in by phone:

+1 612-704-8944,,254248702# United States, Minneapolis

### [Find a local number](#)

**Phone conference ID:** 254 248 702#

**For organizers:** [Meeting options](#) | [Reset dial-in PIN](#)

# IMPORTANT DATES

## NOVEMBER 2025

Start Date	Assessment/Event	End Date
Ongoing	<b>WIDA Screener - Cycle I</b> — Test Administration Window	Friday, December 12, 2025
Ongoing	<b>K-8 Benchmark Assessment System Implementation</b> — Report assessment results and mode of instruction data for benchmark assessments on the Michigan Department of Education Approved List to the Michigan DataHub	Friday, December 19, 2025
Ongoing	<b>Early Literacy and Mathematics Benchmark Assessments</b> — Winter Pre-Identification of Students	Friday, February 6, 2026

## DECEMBER 2025

Start Date	Assessment/Event	End Date
Wednesday, December 10, 2025	<b>WIDA ACCESS and WIDA Alternate ACCESS</b> — Barcode Labels and Initial Material Order for Tier T (WIDA Alternate ACCESS), Braille, Enlarge Print	Friday, December 19, 2025
Wednesday, December 10, 2025	<b>WIDA</b> — Test Exception Window	Friday, January 16, 2026
Wednesday, December 10, 2025	<b>WIDA ACCESS and WIDA Alternate ACCESS</b> — Pre-Identification	Friday, April 3, 2026
Friday, December 12, 2025	<b>Early Literacy and Mathematics Benchmark Assessments</b> — Create/Manage Online Test Sessions	Friday, February 6, 2026

## JANUARY 2026

Start Date	Assessment/Event	End Date
Monday, January 5, 2026	<b>Early Literacy and Mathematics Benchmark Assessments</b> — Winter Test Administration Window	Friday, February 6, 2026

# OEAA ABBREVIATIONS

A rotating list of OEAA abbreviations frequently used in Spotlight

Acronym	Name	Acronym	Name
DRC	Data Recognition Corporation	MERA	Michigan Educational Research Association
EL	English Learner	WIN CRS	WIN Career Readiness System

# OEAA PHONE TREE OPTIONS

For assistance with assessment or accountability issues, **call 877-560-8378** (select the appropriate option):

**Option 1** - For inquiries related to state assessment policy; the OEAA Secure Site; administration of the M-STEP, MI-Access, Early Literacy and Mathematics; and Accountability Reporting

**Option 2** - For inquiries related to the SAT, PSAT, or WIN Work Readiness testing:

Option 1 - eligibility to test and the OEAA Secure Site

Option 2 - administration of the College Board assessments (PSAT 8/9, PSAT 10, SAT)

Option 3 - administration of the WIN Work Readiness skills test

**Option 3** - For inquiries related to WIDA, the English Language Learner assessment; Call 866-276-7735 for assistance with the WIDA Screener and the WIDA Secure Portal

**Option 4** - For all other calls

**Option 5** - To report known unethical testing practices by a school on any state assessment

**Option 6** - To repeat these options



## Questions or Comments?

Contact MDE at:

**Mail:** 608 W. Allegan St., PO Box 30008, Lansing, Michigan 48915

**Assessment Questions:** [mde-oeaa@michigan.gov](mailto:mde-oeaa@michigan.gov)

**Accountability Questions:** [mde-accountability@michigan.gov](mailto:mde-accountability@michigan.gov)

**Phone Assistance:** 877-560-8378

**Website:** [www.michigan.gov/oeaa](http://www.michigan.gov/oeaa)