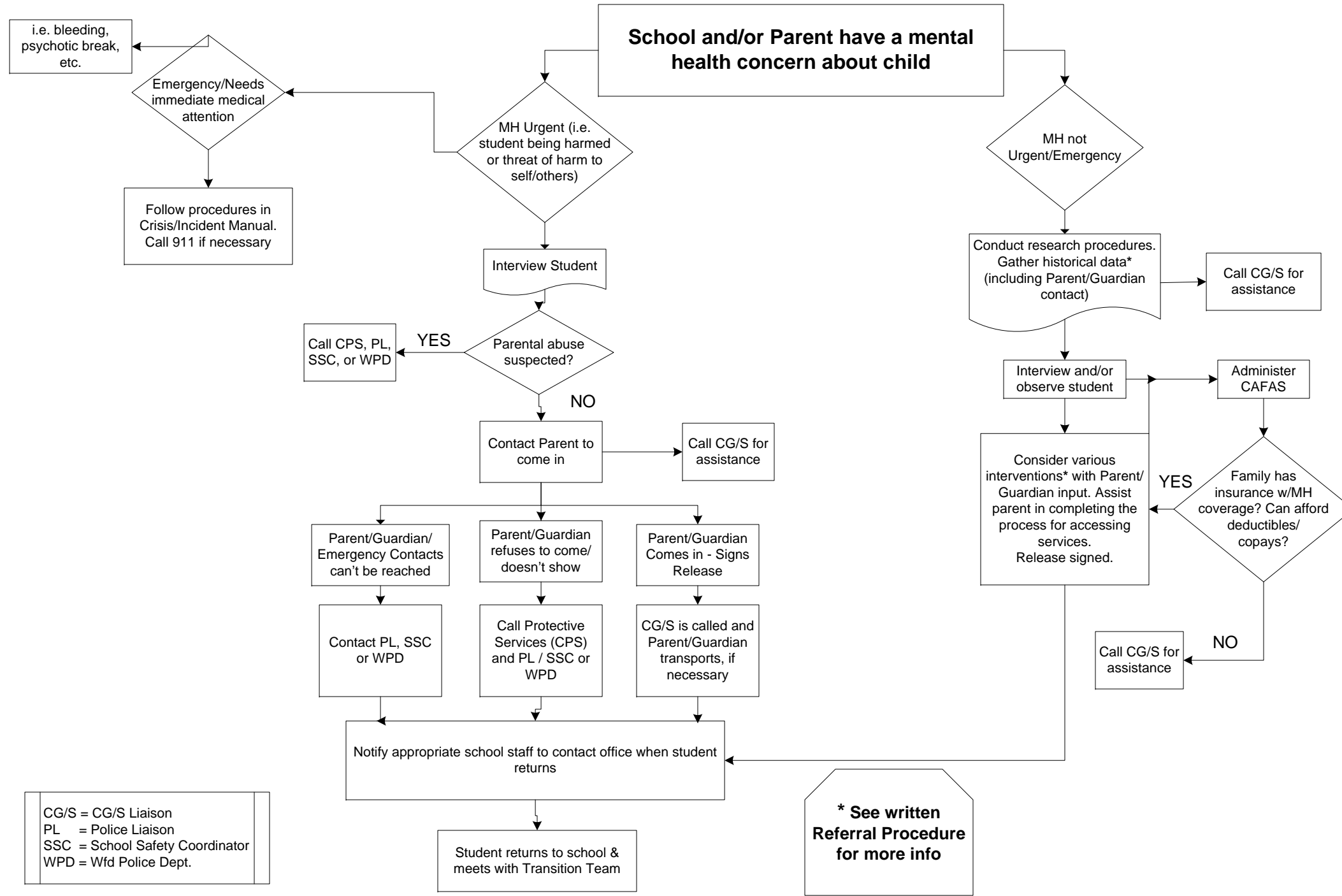


## Referral Process for Accessing Mental Health Services



CG/S = CG/S Liaison  
 PL = Police Liaison  
 SSC = School Safety Coordinator  
 WPD = Wfd Police Dept.

**\* See written Referral Procedure for more info**

These boxes will be in the written Referral Procedures

Historical Info:

- Look at past school accommodations
- CA60 review
- Contact former/current teacher/s
- Contact former SSW/Counselor
- Parental/Guardian contact
- Phone/in person interview (form)
- Obtained signed release/consent
- Inquire re: insurance

Interventions:

- In-School Accommodations
- Mentoring
- Prevention Specialist
- Referral to MHC
- Referral to WYA
- Referral to Spec. Ed.
- Referral to Other Agencies
- SAT meeting
- Schedule Change
- Staffing
- Tutoring