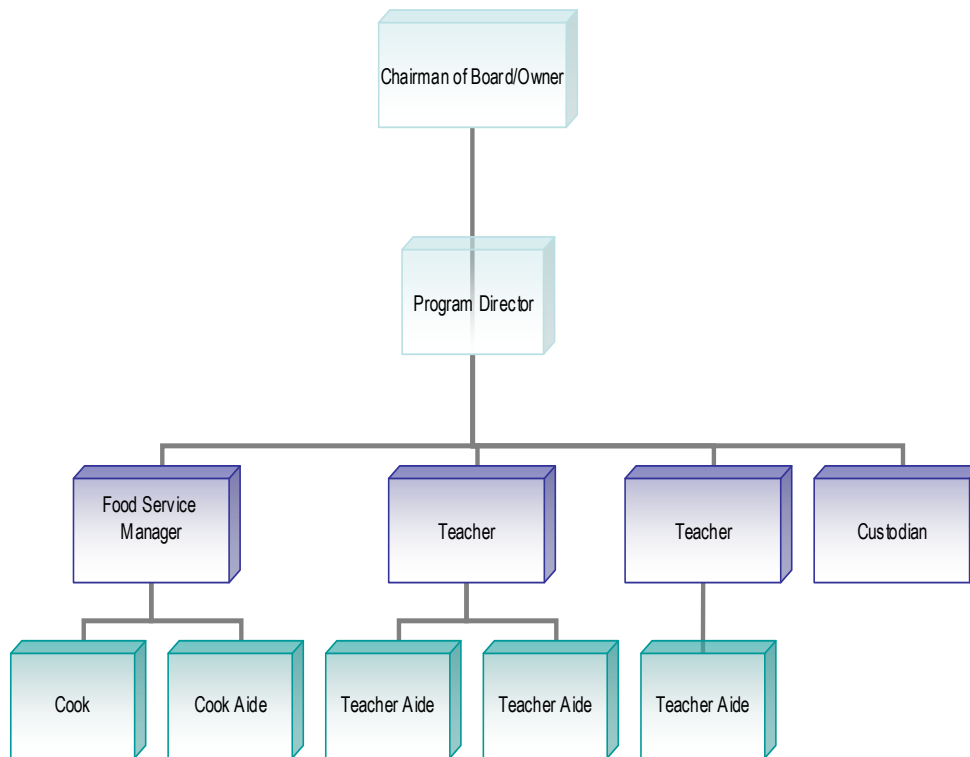


Prototype Organization Chart



An organizational chart shows the lines of responsibility between departments of an organization. The charts typically are pyramidal in shape. They show the person in charge at the top. Below them are clustered their subordinates, usually in progressively smaller boxes. Usually, individuals shown on the same horizontal level in the organizational chart are perceived to be "peers" within the organization.

CACFP regulation 7CFR 226.6 requires sponsoring organizations to submit a complete management plan that includes "detailed information on the organization's management and administrative structure....". Organizational charts are one aspect that MDE will use to evaluate the viability, accountability and capability of the institutions who are applying to the CACFP program.