

map GROWTH + map Reading Fluency



The MAP Suite features powerful assessments to improve instruction and drive growth for Michigan students.

Michigan's Return to Learn legislation, Public Act 149, requires districts to set educational goals using benchmark assessments for all K–8 students in the 2020–21 school year. Aligned to the Michigan Academic Standards, the MAP® Suite of assessments—including MAP® Growth™ and MAP® Reading Fluency™—can help you set those goals and determine whether students are making meaningful progress.

About MAP Growth

MAP Growth is the most trusted and innovative assessment for measuring achievement and growth in K-12 math, reading, language usage, and science. It provides teachers with accurate and actionable evidence to help target instruction for students working on, above, or below grade level. It also connects to the largest set of instructional content providers, giving educators flexibility in curriculum choices.

About MAP Reading Fluency

With speech-recognition technology, the capability for group administration, and automatic scoring, MAP Reading Fluency can provide a clear view of early literacy

skills and learning needs for an entire class in about 20 minutes. This robust benchmark and progress monitoring assessment allows educators to monitor oral reading fluency, literal comprehension, and foundational reading skills for grades pre-K-5.

MAP Reading Fluency is also a universal screener that can help identify students at risk of reading difficulty, including characteristics of dyslexia.

Both MAP Growth and MAP Reading Fluency are available for remote or on-site administration, with select assessments offered in English and Spanish.

Features and capabilities to help you reach more students

With robust content coverage and built-in language and accessibility capabilities, MAP Growth and MAP Reading Fluency can help you understand the unique needs of more students.



Cover more grades, subjects, and skills

Math, reading, and English/language arts for grades K-12. Authentic solutions built for early learners. Assessments for Next Generation Science Standards. Math courses like geometry and algebra. Whatever you need, MAP Growth has you covered.

MAP en español

MAP Growth provides Spanish-language assessments in reading and math, so administrators can get a complete picture of Spanish-speaking students in English-only, bilingual, or dual-language immersion instructional programs.

MAP Reading Fluency benchmark assessments are also available in English and Spanish to help educators reach more readers than ever before.

Supporting access for all students

From universal features like keyboard navigation and zoom to designated features for those who need it, MAP Growth and MAP Reading Fluency are built to support equal access for all.

MAP Growth and MAP Reading Fluency are remote testing ready

In a new and challenging world of remote and blended learning, teachers and families are doing all that they can to facilitate student success. With more than 400,000 remote test events in spring 2020, high-quality assessments like MAP Growth and MAP Reading Fluency can play a role in this effort, providing educators with trustworthy data.



Data you can count on

To determine how remote MAP Growth results compared to on-site MAP Growth results, researchers from NWEA examined trends across [remote and on-site settings](#) from spring 2020. Key findings include:

- Students did not rush through the remote test
- The mode of assessment (on-site versus remote) had a minor effect on student achievement
- The marginal reliability—a measure of a test’s consistency across items—of remote test results was generally high across grades and subject areas

MAP assessments administered remotely deliver the same reliable data and actionable insights trusted by Michigan educators.

Resources for families

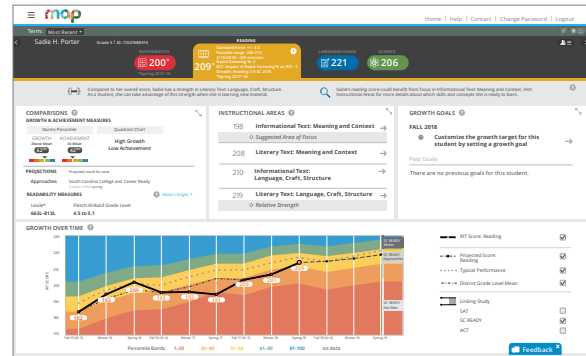
Communication with families ahead of remote testing is critical. NWEA has created specific school-to-home [remote testing resources](#), including practical information caregivers need to support their child before, during, and after an assessment.

Actionable reports to help you lead with confidence

MAP Growth and MAP Reading Fluency reports give administrators a clear view of student performance and growth, making it easy to identify trends, spot potential problems, and plan for improvement.

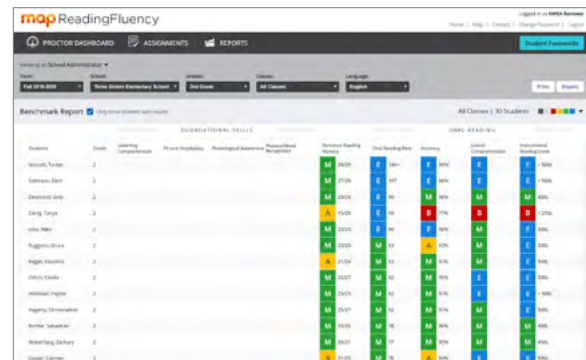
MAP Growth Student Profile Report

This interactive dashboard gives educators a complete picture of a student's learning in one place, making it faster and easier to differentiate instruction. The Student Profile Report puts valuable data at your fingertips to help project proficiency on the M-STEP assessment, set goals, and determine instructional areas and skills to focus on for continued growth.



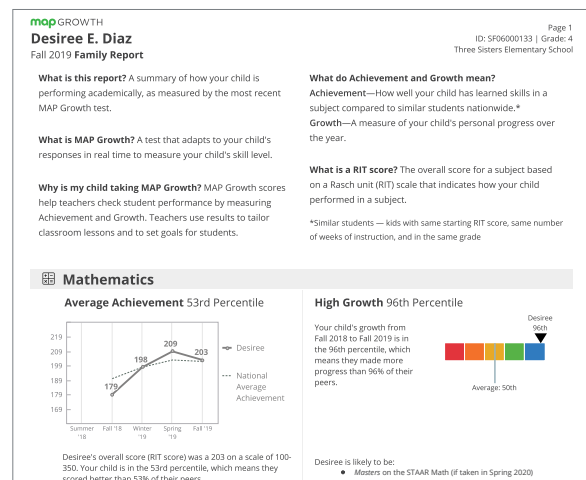
MAP Reading Fluency Benchmark Matrix Report

Automatically scored results from MAP Reading Fluency assessments appear in practical, easy-to-use reports to help advance reading development for all students. The Benchmark Matrix report is an at-a-glance summary of all students assessed during the selected term, providing a more complete picture of unfinished learning and student progress.



MAP Growth Family Report

Designed with families in mind, this report provides a clear view of student progress. In addition to student-specific data educators can share with caregivers, the Family Report includes helpful information about what MAP Growth is, what the report reflects, and how the student was measured.



Assessments purpose-built to deliver the insights you need

	MAP GROWTH	MAP READING FLUENCY
GRADE LEVELS	K-12	Pre-K-5
GRADE-LEVEL INDEPENDENCE	Measures performance of every student, whether on, above, or below grade level—even if standards change	The test adapts to accommodate pre-readers, early readers, and fluent readers
SUBJECTS/AREAS COVERED	Math, reading, language usage, science	Oral reading fluency, literal comprehension, foundational reading skills
FREQUENCY	Fall, winter, spring	Benchmark: Fall, winter, spring Progress monitoring: As often as needed
TEST TIME	Untimed; approximately 45-60 minutes per subject	Benchmark: 20 minutes Progress monitoring: 5-10 minutes
STANDARDS ALIGNMENT	State Standards, Common Core, Next Generation Science Standards*, AERO	
ACCESSIBILITY	Refreshable braille, keyboard navigation, screen reader (JAWS) compatible, magnification, color contrast adjustment, test & item aids, Universal Design for Learning (UDL), ARIA & WCAG compliant, alt tags	Audio instruction, color contrast adjustment, magnification
LANGUAGES	English Spanish available for math and reading	English, Spanish

A unified system of support, committed to your success

Your NWEA® team is available to get you started with ease, remove roadblocks, and support continuous improvement in your schools or district.

Onboard with ease

A dedicated implementation manager will help you get your staff, schools, and systems ready to test quickly.

Elevate educators, transform schools

Improve the culture and practice of data-informed instruction with NWEA Professional Learning. Build a plan that truly works for your school or district, with flexible on-site and online delivery options.

*Next Generation Science Standards is a registered trademark of Achieve. Neither Achieve nor the lead states and partners that developed the Next Generation Science Standards were involved in the production of this product, and do not endorse it.



NWEA is a not-for-profit organization that supports students and educators worldwide by providing assessment solutions, insightful reports, professional learning offerings, and research services. Visit [NWEA.org](https://www.nwea.org) to find out how NWEA can partner with you to help all kids learn.