

OHNS Town Hall

WE WILL BEGIN AT 2:00 P.M.

JANUARY 13, 2021

Happy to have you with us!

PowerPoints are posted at:

- [Office of Health and Nutrition Services Town Hall Meetings](#) webpage

Q & A will be updated weekly and posted at:

- [MDE COVID-19 Health and Nutrition Services Resources](#) webpage

Next: February 10 and March 10

Professional Development Certificates

Town Hall Meetings count as Professional Development.

2020 Town Hall Certificate is available (check off the ones you attended)

- [Town Hall Certificate \(michigan.gov\)](#)

Certificates for each Town Hall moving forward, including today.

- www.michigan.gov/documents/mde/Town_Hall_Certificate_1-13-21_712636_7.pdf

P-EBT 2.0 is Coming

- MDHHS is still waiting on final USDA approval of their plan
- Benefits will be available for students that are eligible for free and reduced-price meals and attending schools that are implementing virtual and hybrid learning modalities
- Communication from MDE/MDHHS is forthcoming, very soon
- MDHHS will need sponsors to submit data around the learning modalities used for your school buildings and early childhood programs
- The initial communication will be for students in k-12 and a follow-up communication will come out for early childhood programs
- We would like to ask that you hold off on any further communication about P-EBT 2.0 out to the general public. MDHHS is currently developing a communication plan for the general public.

How many days in your hybrid schedule each week?

0

1

2

3

4

5

School Food Authority Verification Collection Report (SFA-VCR)

The Michigan Department of Education (MDE) has requested a federal waiver on behalf of all School Food Authorities (SFAs) determined to be in good standing in the state of Michigan for verification reporting.

The SFA-VCR will not open for SY20-21 until MDE has received a response from USDA for the waiver request.

Questions regarding the SFA-VCR may be directed to Natalee Mickelson at mickelsonn@michigan.gov.

MILogin

What is MILogin?

- MILogin is a new way to log in to all our systems
 - You will create a MILogin username/password and then transfer your current MEIS username/password

Who needs to create a MILogin?

- All current Child Nutrition (CN) program sponsors that use GEMS/MARS, MEGS+ and MiND

When do users need to complete this by?

- MEGS+ and MiND will be transitioning to the MILogin in June 2021. Sponsors are encouraged to create a MILogin prior to June 1, 2021

2021 SFSP Reimbursement Rates

Type of Meal Served	Meals Served at Self-Preparation or Rural Sites	Meals Served at Other Types of Sites
Breakfast	\$2.4625	\$2.4150
Lunch or Supper	\$4.3175	\$4.2500
Snack	\$1.0200	\$0.9975

SFSP Reimbursement Rates are effective January - December

Program Integrity Plan

- Written plan to ensure program integrity is upheld during the 20-21 School Year.
- Required by USDA that all sponsors serving meals through any Child Nutrition Program administered by MDE for the 20-21 School Year must complete and maintain a written Program Integrity Plan.
- The written plan must address the following sections:
 - Equitable access for all students, including remote learners
 - Meal counting and claiming for all modes of service
 - Community distribution
 - Training
 - Meal quality and meal components
- Plan must be kept on file for a minimum of 3 years plus current school year.
- Download the template provided in a Word format from MDE:
 - MDE Webpage under resources https://www.michigan.gov/mde/0,4615,7-140-66254_34491-511786--,00.html

Document Guidelines:

- Each section, A – E, should be addressed in your Sponsor Program Integrity Plan. A series of questions in each section have been provided to guide the development of your plan.
- Sponsors may copy and paste the provided example statements in each section that apply your local program procedures. Be sure to edit the example statements as needed to reflect your actual program procedures.

A. Equitable Access

*Equitable access to meals is key to maintaining integrity in our Child Nutrition Programs. We strive to ensure food insecure children have access to nutritious meals. The below statements include how **{Sponsor name}** will maintain equitable access to **all** students in our meal programs:*

While formulating your integrity plan for equitable access, please consider the following questions:

Question 1: How is the program being promoted? Keep in mind that not all families have reliable access to internet or social media. Best practice is to promote in a variety of formats and places.

Question 2: How are families being informed about meal availability? Remember that sometimes information is not relevant until it is needed. Best practice is to communicate often.

Question 3: How do remote learners get meals? Keep in mind that just because they are remote does not necessarily mean families have reliable transportation or a flexible schedule. How are you varying pick up times to meet the needs of all families?

Question 4: Do families need to pre-order meals? What if someone comes to a meal distribution site and has not pre-ordered?

Question 5: What is your plan to accommodate families that cannot make the designated distribution time or place?

Question 6: What is the plan if the school or district unexpectedly closes? How will students receive meals? (closures include but are not limited to: COVID-19, weather, malfunction of heating system, water main break, etc.).

The Plan is Complete – Now What?

- MDE does not require district level approvals or public transparency regarding this plan – sponsors should be able to produce the Program Integrity Plan during child nutrition reviews.
 - Plan will be reviewed during Child Nutrition Program Administrative Reviews, which include SFSP, NSLP or CACFP.
- The plan does **not** need to be provided to MDE and should be kept on file at the district.
- Sponsors should decide locally if the plan should be posted publicly or approved by other members of school administration or the community.
- When changes occur within your program, the Program Integrity Plan should also be updated to reflect changes

Elevate School Meals

Increasing participation is always a goal for Child Nutrition Programs and virtual learning environments create a bigger challenge.

Use this checklist to gain new ideas on how to increase participation.

One change may have a big impact.

Document is on NSLP Resources webpage: [Checklist - SNP \(michigan.gov\)](#)

Communications Campaign

Target messages of campaign:

- Meals at no cost
- Supports school and local community (supporting local jobs)
- Available to ALL children
- Nutritious
- Convenient
- Sense of "normalcy"

Communication resources available:

No Kid Hungry Toolkit - [NKH School Meals Marketing Toolkit](#)

- Social Media Images and copy
- Flyers
- Customizable Letter to Families
- Sample Robocall Script

NKH Communications Webinar

- January 20th at 3:00 p.m.
- Registration is free
 - Register at [No Kid Hungry Michigan Best Practices Webinar Series Registration](#)
- Webinar will be recorded, and slide deck will be shared

United Dairy of Michigan (UDIM) New Resources

“Helpful Reminders for Sending Meals Home” Resources now Available!

- **Beneficial reminders include:**

- Sample PA announcements
- Social media posts
- Newsletter clips

- **Also available: Free stickers or postcards**

- Reminder to students and grown-ups there is fresh food in their bags that needs to be refrigerated.

Check out these great resources at the UDIM [website](#) under Schools and Educators [Helpful Reminders for Sending Meals Home](#)

10 Cents A Meal Grant

•**Congratulations SY 20-21 Grantees!**

- FarmLogix/Claims Processes
- Training Webinar: tencentsmichigan.org
- Importance of Surveys
- Opportunity to Increase Allocations!

•**A Second Opportunity to Apply**

- Application will reopen next week
- FAQ's about program: tencentsmichigan.org

I have an Excess Fund Balance from SY19-20, now what?

- Verify on Audited Financial Statements, FID School Meals Report or SLYER report
- Funds must be spent on food service program improvements
- An acceptable Spend Down Plan of Action will be required in February 2021
- The Excess Fund Balance must be spent down by June 30, 2021
- Most common ways to invest in FS program improvements:
 - improving food quality
 - purchasing needed supplies, services, or equipment
 - additional staffing
- Working on the plan now will allow districts more time to plan, procure and spend down the funds by June 30, 2021
- All About Excess Fund Balances resource document and Excess Fund Balance Webinar located at: www.michigan.gov/mde-fast

LARA – Updated Reference Guides for Child Care Providers

The Quick Reference Guides are posted to the childcare licensing website as a resource tool.

The Quick Reference Guides is the short form of **the Guidelines for Safe Child Care Operations During COVID-19**:

•**Masks:** https://www.michigan.gov/documents/lara/2020-lara-covid-bchs-guidelines-sheet-MASKS-PROOF-2_711796_7.pdf

•**Monitoring and Responding to COVID-19**

Symptoms: https://www.michigan.gov/documents/lara/2020-lara-covid-bchs-guidelines-sheet-SYMPTOMS-PROOF-2_711797_7.pdf

•**COVID-19 Exposure and Reporting Positive Cases:**

https://www.michigan.gov/documents/lara/2020-lara-covid-bchs-guidelines-sheet-EXPOSURE-PROOF-2_711802_7.pdf

Vaccine Update

- Starting Monday, January 11, Michigan will be moving forward with vaccination of frontline essential workers – **including all school employees and childcare professionals.**
- Childcare professionals includes all childcare workers in centers, family homes, Head Start, Great Start Readiness Programs, etc.
- Please don't contact your local health department. The most up-to-date information will be posted at Michigan.gov/COVIDvaccine

Child Care Relief Fund Grant

The **Child Care Relief Fund** is a grant program that helps childcare providers cover costs during the COVID-19 state of emergency.

YTD Summary:

- Cares Act Application Submission: 34,374
- Total Cares Payment: \$86,651,710.00

****PLUS****

- Tuition Stipend Applications: 15,777
- Total Stipend Payments: \$16,571,618.37

Child Care Subsidy for Care for School-Age Children -- EXTENDED

Subsidy extended due to \$10M supplemental appropriation for billing school age children

Effective August 16, 2020 – July 3, 2021

Childcare providers may bill childcare subsidy for care provided during the school day for school-age children if a child is participating in virtual education

Includes:

- Child participating in a fully virtual program
- Virtual learning during a hybrid program
- Virtual learning offered due to temporary closures
- Additional information available on www.michigan.gov/childcare

CACFP Training Videos for Annual CACFP Staff Trainings

- Colorful, fun and informative training videos available
- Available on the MDE CACFP YouTube site
- Also available on the MDE CACFP webpage under the Training, and Resources headers.
- Remember to document any CACFP staff training with an dated agenda and sign-in sheet
- Additional information located CACFP website:
www.michigan.gov/cacfp

New Training Videos: Mealtimes With Toddlers in the CACFP

Team Nutrition (TN) released new training videos about mealtimes with toddlers (1- and 2-year-olds) in CACFP

The 2–3-minute videos are available in English and Spanish

Address the following hot topics:

- Assisting toddlers in learning how to feed themselves
- Encouraging toddlers to try new foods
- Types of milk to serve children in the CACFP

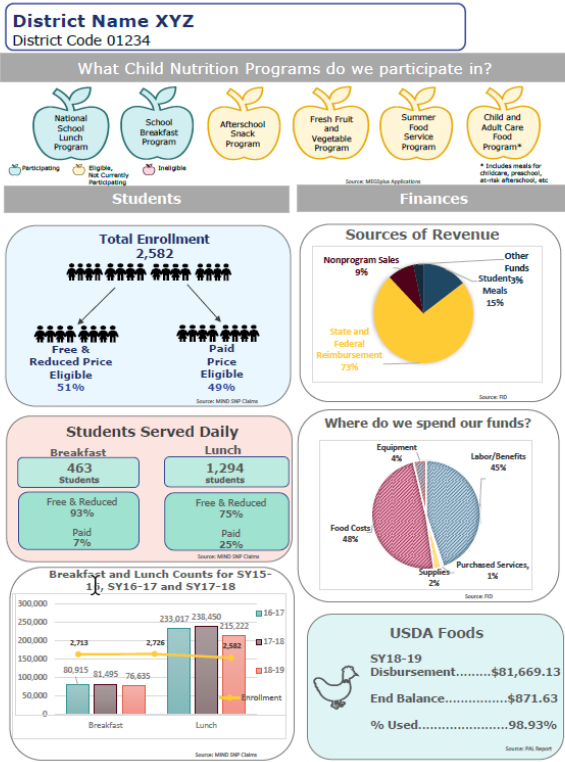
The videos, along with ***the Mealtimes with Toddlers in the CACFP Operator Booklet*** and ***Family Handout*** are available on the TN web site at <https://www.fns.usda.gov/tn/mealtimes-toddlers-cacfp>.

Data & Infographics

Are there any data that you are interested in having to share with your administration or school board?

Would you like MDE to create an infographic for you to be able to share with your team?

Please enter any comments or suggestions in the chat or email our Data Specialist, Sara Herman, at HermanS2@Michigan.gov



What Questions do you
have?

**PLEASE ENTER YOUR QUESTIONS IN THE
CHAT BOX.**