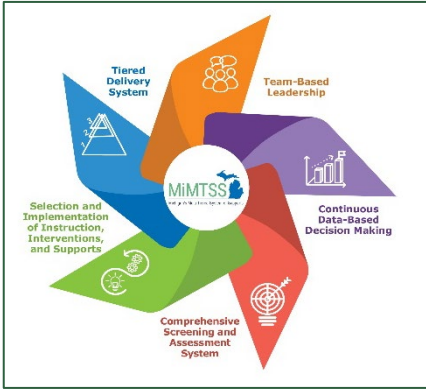


MiMTSS Newsletter

Michigan's Multi-Tiered System of Supports

November-December 2020
Volume 1, Issue 2



News to Know

MDE MTSS Practice Profile 5.0 Essential Components

Congratulations, you have clicked through [the MDE MTSS Practice Profile version 5.0](#). Now what? Following an introduction and background on its development, you will discover each [essential component](#) of the MDE MTSS Practice Profile is outlined in the same easy-to-use format (see table below) to guide a district's implementation of MTSS. This includes research citations, a definition, contributions to desired outcome and key actions taken by educators and leaders within the component along a developmental continuum from expected behavior, to developmental, and unacceptable use.

| Essential Component | | |
|---|---|---|
| Citation of Research Used: | Research base for the essential component | |
| Definition: | Definition of the essential component | |
| Contribution to Desired Outcome: | Contribution to the desired outcomes of MTSS made by the essential component | |
| Expected Use in Practice | Development Use in Practice | Unacceptable Use in Practice |
| Actions that exemplify educators and leaders who implement the essential component consistently. Educators and leaders generalize the essential component independently in all settings and in a broad range of contexts. Educators' skills are sustained and deepened over time. | Actions that exemplify educators who implement the essential component, but with a limited range. Use of strategy is inconsistent or needs additional training or coaching to move to expected, proficient use with fidelity. | Includes educators and leaders who are not yet able to implement the essential component. Performance in this area may indicate a need to address the overall implementation supports (e.g., training, coaching, data systems, etc.). |
| *The MDE MTSS Practice Profile is a guide to inform district implementation of MTSS. It should not be used for the purposes of staff performance evaluations. | | |

Quick Links

[MDE MiMTSS Website](#)

[MiMTSS TA Center](#)

[MiMTSS Data System](#)

[Practice Profile](#)

[MICIP](#)

[EWIMS](#)

Contact Us at MDE-MTSS@michigan.gov

Welcome to the second issue of the MiMTSS newsletter! Each issue is designed to keep you informed about Michigan Department of Education's (MDE) efforts to support effective implementation of a Multi-Tiered System of Supports (MTSS). Topics will include the MDE MTSS Practice Profile, the five essential components of MTSS, frequently asked questions, stories from the field, helpful tools, tips, and more. Please share this newsletter and, to not miss an issue, subscribe to the newsletter at [MDE Email Lists](#).



Michigan has an updated [Top 10 Strategic Education Plan](#) that provides focused direction to Michigan's education community in support of all learners. The State Board of Education's approval in August 2020 of a streamlined strategic education plan that, while retaining the mission and vision of the original 2016 Top 10 plan, has amended guiding principles, operationalizable goals, metrics associated with each goal, and opportunities in the mid-term for districts to share best practices with one another in the different goal areas.

The plan is both directional and aspirational and designed to concentrate energy and resources, strengthen operations, and set success measures to ensure that all stakeholders are working together toward common education goals. The creation and adoption of the plan followed months of interviews and focus group discussions with education stakeholders and responses from nearly 12,000 individuals to a statewide survey. For more information, please visit www.Michigan.gov/mde. We hope you will support Michigan's Top 10 Strategic Education Plan.

New Versions of Implementation Tools to Support YOUR MTSS Implementation

Scaling-up of evidence-based practices (SISEP) has created a new version of the [Implementation Stages Planning Tool](#). The Implementation Stages Planning tool supports districts and schools in identifying their current stage of implementation for their MTSS work, as well as supports planning and improvement by providing:

- 1) a flow chart to determine stage of implementation;
- 2) a list of appropriate stage-based activities; and
- 3) an outline of expected stage-based outcomes.

New Versions of Implementation Tools to Support YOUR MTSS Implementation (Continued)

The [Hexagon Tool](#) has been revised to incorporate feedback from partners and stakeholders in K-12 education, early childhood, child welfare, and public Schools in the U.S., Scotland, and other nations. Check out the revised version that includes added language and considerations for race equity when selecting evidence-based practices for your MTSS work.

New AI Hub lessons:

- [New Initiative Inventory Lesson \(Lesson 10\)](#) is available! The initiative inventory can be used to guide your team's review of past and current practices or programs to get a clear picture of successful strategies, and challenges, along with existing mandates and resource commitments. This brief lesson supports your learning about how to collect and analyze data for the initiative inventory and use the results to inform selection, de-selection, and alignment decisions for practices or programs within your MTSS work.
- Be on the lookout in the next week or two for a new implementation stages lesson (Lesson 7) to accompany the new implementation stages planning tool.

MiMTSS Technical Assistance Center Implementation Supports

MTSS Implementation Supports Webinar

The MiMTSS technical assistance center provided a webinar for ISD, district, and PSA leaders on October 7, outlining available MTSS implementation supports. If you missed the webinar, a [recording of the MTSS Technical Assistance Options](#) is available.

MiMTSS TA Center Catalog of Supports

The [MiMTSS Technical Assistance Catalog](#) outlines technical assistance/professional learning offerings available from the center on behalf of MDE. The catalog is organized by the level of technical assistance (universal and targeted) and aligned to MDE's MTSS practice profile. Within the catalog, an MTSS supports assessment is intended to provide MiMTSS TA Catalog of Supports (Continued)

ISD and district executive leaders with a systematic means to determine appropriate technical assistance options to support implementation.

District ISD Request for Targeted MTSS

Districts interested in receiving targeted technical assistance need to complete a request form by December 4. The selected offerings available for targeted assistance are detailed in the TA center catalog. Please visit the [Targeted Technical Assistance webpage](#) for additional information on how to submit a request and access the necessary documents.

Webinars and Conferences

Highlights from Supporting Educators Webinar Series

The MiMTSS TA center is providing a recap from Webinar Series 1 which includes key points and links to short video clips. The recap from Webinar Series 1 can be found in [Highlights from Supporting Educators Webinar Series](#).

Overview of the MTSS Practice Profile for ISDs

A webinar providing an overview of the MDE Multi-Tiered System of Supports (MTSS) Practice Profile at the ISD level is scheduled for December 9 from 9:00-11:00. Please visit the [TA Center Events](#) web page for more information.

Continued Supports for Educators Webinar Series

The MiMTSS TA Center is providing four new webinars which feature a national speaker and expand on topics from the previous series: promoting a positive and effective school climate, addressing social-emotional needs, using high leverage instructional practices, and building relationships with families. The webinars are free to participate. View the [event flyer](#) for additional details and registration information.

Stories from the Field

An ISD Journey – Supporting District Implementation of MTSS

Lenawee ISD Regional Implementation Team

Beginning in 2017, Lenawee Intermediate School District (LISD) participated in [MDE's Transformation Zone \(TZ\)](#). The LISD received extensive access to both MDE and state implementation and scaling-up of evidence-based Practices (SISEP) personnel to build an implementation infrastructure to support the effective use of Michigan's Multi-Tiered System of Supports as defined in the [MiMTSS Practice Profile](#). In a TZ, rather than adapting an effective innovation (EI) to fit the current system, the system is built to support implementation of the EI with fidelity. For the LISD, this meant developing some much-needed systems, reimagining how support was being provided to LEAs, and redefining the roles of ISD staff.

The Clinton and Onsted school districts were identified through a mutual selection process to participate in LISD's collaboration with MDE. The goal was to implement MTSS while installing Positive Behavioral Interventions and Supports (PBIS) in Clinton, and a literacy initiative in Onsted. Implementation teams were developed at the regional (ISD), district, and building levels to lead this work. MDE and SISEP provided professional learning/technical assistance to the regional and district implementation teams. Focusing on building district systems (rather than building level systems) proved beneficial for LISD, Clinton and Onsted.

An ISD Journey – Supporting District Implementation of MTSS (Continued)

Reflecting on the last three years of work for LISD, the new and deeper relationships with Clinton and Onsted school districts stand out as the highlight. Other benefits include the shared implementation science learning, using tools like the [Hexagon Tool](#) and [Initiative Inventories](#), and problem-solving ways to provide better services to Lenawee local school districts through coaching.

The biggest barrier encountered has been developing a coaching system. Currently, the LISD supports each district with a systems coach/es at the district level. Both districts have their own elementary building coaches (who also receive LISD support) but have struggled to implement and maintain secondary building-level coaches.

Due to increased district interest in this work, LISD developed the *MTSS Academy*. This is a multi-session series focused on the five components of the MDE MiMTSS practice profile (Team-based Leadership, Tiered Delivery System, Selection and Implementation of Instruction, Interventions and Supports, Comprehensive Screening and Assessment System, and Continuous Data-Based Decision Making). Currently, seven districts are participating in the MTSS Academy from which 2-3 will be mutually selected to receive additional LISD intensive technical assistance on implementing MTSS.

Want to share an experience with MTSS implementation, an MTSS accomplishment, or MTSS challenge that has been overcome? You can submit your story by filling out the [Google form](#).



608 West Allegan Street
Lansing, Michigan 48915
www.michigan.gov/mtss
MDE-MTSS@michigan.gov

Questions from the Field

Have a question? Email the MiMTSS Communications Team at MDE-MTSS@michigan.gov.