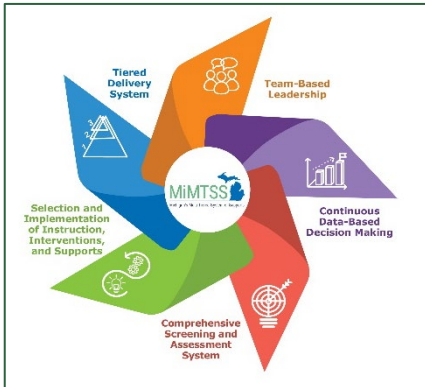


MiMTSS Newsletter

Michigan's Multi-Tiered System of Supports

September 2020
Volume 1, Issue 1



Welcome to the new MiMTSS newsletter! Each issue of this communication is designed to keep you informed about Michigan Department of Education's (MDE) efforts to support effective implementation of a Multi-Tiered System of Supports (MTSS). Topics will include the MDE MTSS Practice Profile, the five essential components of MTSS, frequently asked questions, stories from the field, helpful tools, tips, and more. Please share this newsletter and, to not miss an issue, subscribe to the newsletter at [MDE Email Lists](#).

Quick Links

[MDE MiMTSS Website](#)

[MiMTSS TA Center](#)

[MiMTSS Data System](#)

[Practice Profile](#)

[MICIP](#)

[EWIMS](#)

Contact Us at MDE-MTSS@michigan.gov

News to Know

MDE MTSS Practice Profile 5.0

MDE is proud to announce the release of [the MDE MTSS Practice Profile version 5.0](#). The MTSS practice profile provides guidance for implementation of MTSS as indicated in Michigan's state law. It describes what actions educators and leaders take when implementing an MTSS framework with fidelity. The tool identifies the [five essential components](#) of MTSS as well as its underlying philosophy, expected outcomes, and the research base for the framework. Improvements in the MDE MTSS Practice Profile version 5.0 are consistent with the MTSS research that informed the original practice profile and support the five essential components identified by Michigan. The essence of each section and essential component remain the same. The changes improve the practice profile by aligning language, reorganizing content, and reducing redundancy, while also making some content more explicit and actionable.

Stories from the Field

Want to share an experience with MTSS implementation, an MTSS accomplishment, or MTSS challenge that has been overcome? You can submit your story by filling out the [Google form](#).



Michigan’s Multi-Tiered System of Supports (MiMTSS) Frequently Asked Questions

MDE recognizes the necessity of supporting Intermediate School Districts (ISDs) and Local Education Agencies (LEAs) in the implementation of a MTSS for successful learner outcomes. As such, MDE established the [MiMTSS FAQ](#) to answer questions about MTSS, the MDE MTSS Practice Profile, and the MiMTSS System of Support.

The MiMTSS FAQ is organized by the following categories:

- MTSS Purpose, Partners and Outcomes
- MTSS, [Michigan’s Top 10 Strategic Education Plan](#) and Legislative Alignment
- MDE MTSS Practice Profile
 - Five Essential Components
- MiMTSS, Professional Learning and Technical Assistance

Introducing Michigan’s MTSS Technical Assistance Center (MiMTSS TA Center)

The [MiMTSS TA Center](#) (formerly MIBLSI) works on behalf of MDE to provide a continuum of universal, targeted, and intensive technical assistance to intermediate school districts (ISDs) and local education agencies (LEAs), which includes both traditional public schools and public school academies, to support implementation of an MTSS framework. The TA center’s mission is to improve outcomes for all learners by assisting educators in developing infrastructures to support high-quality and sustained implementation of effective, data-driven practices within an MTSS framework.

The [MiMTSS Data System](#) is a free-access web-based data system designed for LEAs, ISDs and MDE to gather and analyze data that is critical for the continuous improvement of MTSS in Michigan. It provides educators with a place to collect data not captured elsewhere related to MTSS inputs, implementation, and outcomes (e.g., personnel, training records, partners, capacity assessments, fidelity assessments) and view data in a common format, so they are easily understood across all levels of the education system (e.g., school/center,

LEA, ISD and State). A use agreement and login are needed to access the system.

Webinars and Conferences

Early Childhood MTSS Webinar

In June, MDE’s MiMTSS Early Childhood Committee sponsored a [webinar on implementing MTSS in early childhood](#) settings. Dr. Lise Fox, Professor and Co-Director of the Florida Center for Inclusive Communities, provided participants with an overview of MTSS at the early childhood level focusing primarily on preschool implementation, while drawing connections to the five essential components of MTSS defined in MDE’s MTSS Practice Profile.

Supporting Educators in Preparation for the Fall Webinar Series, July-August 2020

Recently the MiMTSS TA Center sponsored a series of free webinars to support educators in preparation for reopening schools. The webinars focused on four themes: (1) Positive and Effective School Climate, (2) Social and Emotional Well Being, (3) High Leverage Instruction, and (4) Family Engagement. Each webinar theme was presented by national experts in the field with a follow-up webinar by state experts from MDE. [All of the webinars were recorded and are posted for anyone to access.](#) Additionally, all of the materials from the webinars and the follow-up documentation can be found on the COVID-19 Resources page of the MiMTSS TA Center website at <https://mimtsstac.org/covid-19-resources>.



Special Populations EdCamp 2020 Registration Announcement

MDE's 2020 Special Populations EdCamp registration is now open via Eventbrite and posted on the Office of Educational Supports website. Join the special populations team as we convene virtually to provide support for meeting the unique needs of students in special populations with an emphasis on tiered level instructional supports. There will be informative highlights from speakers on the whole child, literacy, and MTSS. All registrants will receive an email confirmation with an electronic brochure containing the list and descriptions of scheduled live virtual and pre-recorded "Camp-tivities."

http://www.michigan.gov/documents/mde/Special_Pops_EdCamp_699300_7.pdf

MDE Fall 2020 Virtual Continuous Improvement Conference Registration

Due to the COVID-19 pandemic, the Michigan Department of Education's Office of Educational Supports (OES) will sponsor the first virtual Fall Continuous Improvement Conference: Equity for Continuous Improvement: Opportunities, Environments, and Supports on Tuesday, October 20. Addressing the conference theme will be keynote speaker Dr. Seena Skelton, director of the Great Lakes Equity Center.

For conference details and registration visit: <http://gomasa.org/events/mde-continuous-improvement-conference/>. If you have specific questions pertaining to this conference, please contact Ben Boerkoel at boerkoelb@michigan.gov.

Questions from the Field

Have a question? Email the MiMTSS Communications Team at MDE-MTSS@michigan.gov.

