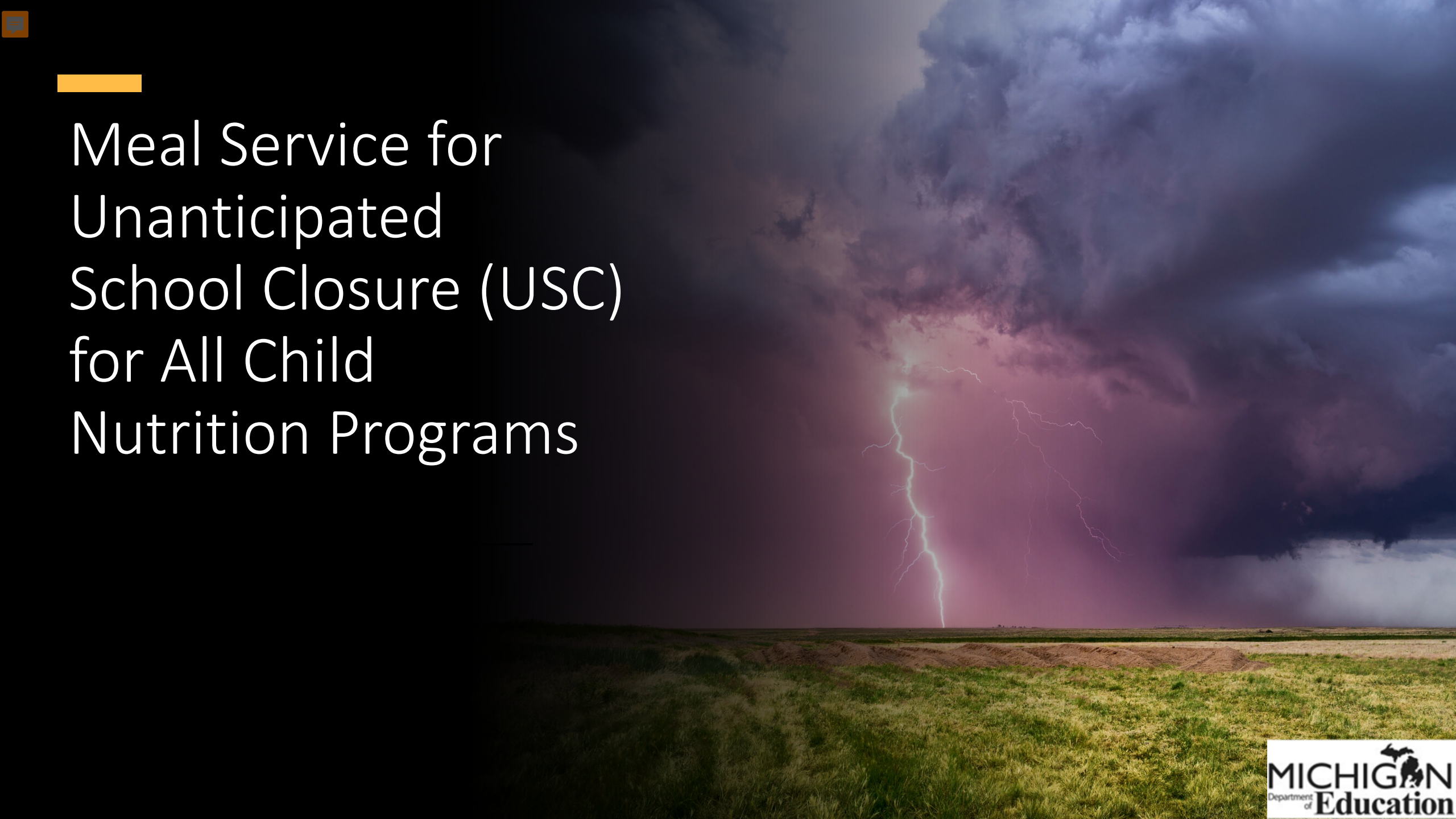




Meal Service for
Unanticipated
School Closure (USC)
for All Child
Nutrition Programs



Agenda

- USC Overview
- 12 (I) Waivers
- USC for Summer Food Service Program (SFSP)
- USC for the National School Lunch Program (NSLP)
- USC for the Child and Adult Care Food Program (CACFP)
- USC Requirements
- Record Keeping
- Meal Pattern and Food Safety

What is USC?

Unanticipated School Closure (USC) allows state agencies, school food authorities (SFAs), and sponsors to quickly respond to unanticipated school closures due to natural disasters, unscheduled major building repairs, court orders relating to school safety or other issues, labor-management disputes, or similar unanticipated causes.

Summer Food Service Program (SFSP) USC

- Sponsors that have participated in the SFSP within the past 2 years are eligible to serve under SFSP USC.
- USC Sites must be eligible for SFSP.
- School sites are not permitted to serve meals under SFSP USC (MDE has applied for waivers each year to allow school sites to serve meals under USC).
- Meals must be served in a congregate setting.
- All administrative program requirements are the same as in traditional SFSP.

- Waivers allow for non-congregate meal service when congregate meal service operations are limited due to USC.
- National School Lunch Program (NSLP) and School Breakfast Program (SBP)
- Summer Food Service Program (SFSP)
- Child and Adult Care Food Program (CACFP)
- Non-congregate meals may be served with or without virtual learning.
- Sponsors are approved for up to 10 consecutive serving days.
- Extensions may be granted if needed.

12 (l) Waivers

Summer Food Service Program (SFSP)

Waivers for this program can be used when a school building is closed due to unanticipated causes when *virtual learning is not available*. These waivers are effective through June 30, 2026. USC -SFSP waivers allow for:

- Non-Congregate Meal Service
 - Children can take their meals to be eaten off-site.
 - Maximum of seven days' worth of meals may be distributed at one time.
 - Meals are distributed only for days the site is closed.
- Meal Service Times
 - There is no requirement for meals to be served at least one hour after the previous meal or snack.
- Parent and Guardian Meal Pick-up
 - Parents and guardians can pick meals up on their child's behalf. Children are not required to be present.
- Service of Meals at School Sites
 - School buildings may be used to serve meals during an unanticipated school closure

National School Lunch Program (NSLP) and School Breakfast Program (SBP)

Waivers for this program are intended to provide needed flexibility to support School Food Authorities (SFA) in continuing to offer nutritious meals when school buildings are closed, and ***virtual classes are being offered***. These waivers are effective through June 30, 2026. USC NSLP waivers allow for:

- Non-Congregate Meal Service
 - Children can take their meals to be eaten off-site.
 - Maximum of five days' worth of meals may be distributed at one time.
- Meal Service Times
 - Lunch may be served outside the hours of 10:00 a.m. and 2:00 p.m.
- Parent/Guardian Meal Pick-up
 - Parents and guardians can pick meals up on their child's behalf. Students do not need to be present.
- Offer Verses Serve
 - Senior High Schools (as defined by the State educational agency) are not required to participate in offer verses serve.

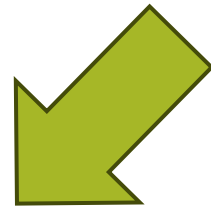
Child and Adult Care Program (CACFP):

These waivers are intended to provide needed flexibility to support centers in continuing to offer nutritious meals during unanticipated school closures. These waivers are effective through June 30, 2026. These waivers allow for:

- Non-Congregate Meal Service
 - Children can take their meals to be eaten off-site.
 - Seven days' worth of meals may be distributed at one time.
- Meal Service Times
 - Meals and snacks do not have to served after the child's school day.
- Parent/Guardian Meal Pick-up
 - Parents and guardians can pick meals up on their child's behalf. Students are not required to be present.
- Enrichment Activity
 - Organized educational enrichment activities are not a requirement.

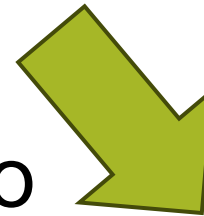
To provide non-congregate
meal service during
Unanticipated School Closure

Is virtual learning/instruction provided?



Yes

National School
Lunch Program



No

Unanticipated School Closure –
Summer Food Service Program
or
Child and Adult Care Food
Program

To serve and claim meals using these waivers a sponsor must:

- Watch this recorded training.
- Complete the [Meal Service During Unanticipated School Closure Request Form](#)
- on the MDE-SFSP website located under How to Apply.
- **USC- SFSP only:** Sponsors must amend their CNP: Coordinated Application in NexSys and update the calendar for days the site served meals.



HOW TO SERVE MEALS THROUGH USC

Point of Service Record Keeping

All records must be accurate, and meals must be counted at the point of service (POS).

- SFSP: Daily meal count form, multiple meal count form, or POS system
- NSLP: School roster or POS system. Keep a list of sites and dates that do meal distribution.
- CACFP: School roster or POS, can be taken by name (enrolled) or by head count for unenrolled programs

All records must be kept on file for three years plus the current year.

Meal Pattern and Food Safety

- Sponsors must follow the required meal pattern for the program in which they are serving.
 - If you are claiming your meals through SFSP, you must follow that meal pattern.
- Sponsors must adhere to all food safety regulations
 - Cold food must be kept at 41 degrees or below
 - Hot food must be kept at 135 degrees or above
 - If meals are held in coolers or warmers, temperatures must be taken and kept on-site.
- Sponsors must include instructions for storing and/or heating.
- Sponsors may not serve bulk food items other than fresh fruit and vegetables, juice, and milk.





Staff Training

- All staff must be trained according to specific program regulations in which they are serving.
- Civil Rights training must be taken annually.
- [Online Training Modules \(michigan.gov\)](https://michigan.gov)

Thank you!

For more information please contact:

MDE-SFSP@michigan.gov

MDE-SchoolNutrition@michigan.gov

MDE-CACFP@michigan.gov