


Goal 5: Supporting Students to and Through Graduation with the Early Warning Intervention and Monitoring System

Dr. Delsa Chapman, deputy superintendent,
Division of Assessment, School Improvement, and Systems Support

Dr. Corinne Edwards, director
Office of Educational Supports

Ms. Bersheril Bailey, education consultant
Office of Educational Supports

Michigan State Board of Education Meeting
June 11, 2024

A decorative horizontal line at the bottom of the slide, composed of a series of small, colored dashes in orange, red, green, and blue.

Goals

1. Expand early childhood learning opportunities
2. Improve early literacy achievement
3. Improve the health, safety, and wellness of all learners
4. Expand secondary learning opportunities for all students
- 5. Increase the percentage of all students who graduate from high school**
6. Increase the percentage of adults with a post-secondary credential
7. Increase the numbers of certified teachers in areas of shortage
8. Provide adequate and equitable school funding



Overview

- Graduation Rates Summary
- Graduation Rate Increase Guidance
- Early Warning Intervention and Monitoring System (EWIMS): An Intentional Effort



2023 Graduation Rates

4-year graduation rate: 81.8%

5-year graduation rate: 84.1%

6-year graduation rate: 84.6%



Graduation Rates Summary

- Statewide graduation rates – increases in 10 of the last 12 years.
- 17 of 17 categories have increased in the last year.
- 13 of 17 categories are higher than pre-pandemic.
- Sizable differences continue to exist between the graduation rates of different groups and require the continued attention of local and intermediate school districts (ISD), the department, and the state legislature.



Graduation Rates Summary

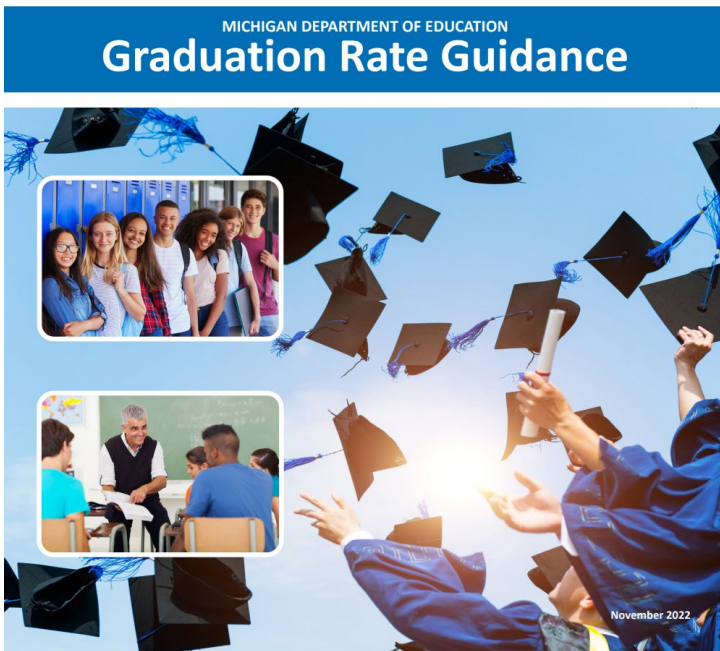
Yearly graduation rates are tracked using seventeen different categories:

- | | |
|---------------------------------------------------------------|------------------------------------------|
| 1) Gender - Female | 10) Economically Disadvantaged Students* |
| 2) Gender - Male* | 11) English Learners* |
| 3) Race/Ethnicity - Asian* | 12) Youth Experiencing Homelessness |
| 4) Race/Ethnicity - Black/African American* | 13) Migrant Students* |
| 5) Race/Ethnicity - Hispanic or Latino* | 14) Students with Disabilities* |
| 6) Race/Ethnicity - Native American or Alaska Native* | 15) Early Middle College* |
| 7) Race/Ethnicity - Native Hawaiian or other Pacific Islander | 16) Youth in Foster Care* |
| 8) Race/Ethnicity - Two or More Races | 17) Military-Connected Youth* |
| 9) Race/Ethnicity – White* | |

*2023 graduation rate higher than pre-pandemic



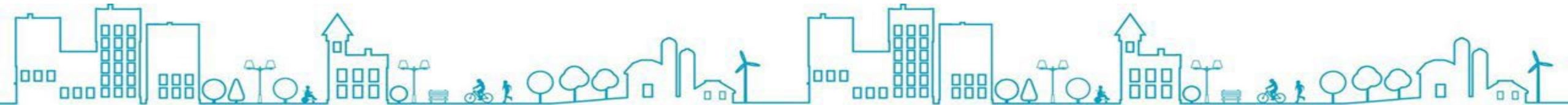
Graduation Rate Increase Guidance



High School Edition (released November 2022)

Focus Points

- Absenteeism Intervention
- Academic Enrichment and Tutorial Support
- Extracurricular Engagement
- Mentoring



Graduation Rate Increase Guidance



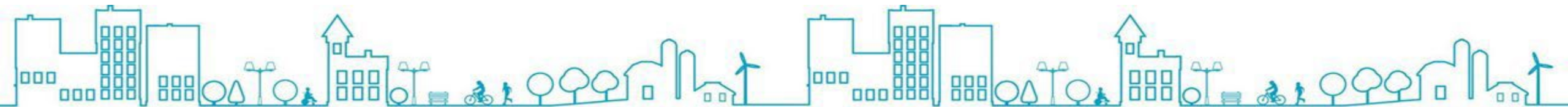
Supporting Students to and through Graduation: Engaging Students for Successful Middle Years



Middle Years Edition (released February 2024)

Focus Points

- Strategies to Promote Attendance
- Personalized Learning/Enrichment
- Out-of-School-Time Opportunities
- Mentoring



Graduation Guidance Next Steps

Fall 2024: Memo to the field reminding LEAs of the current high school and middle years guidance documents

Fall 2024: Release of 3rd graduation rate increase guidance document for elementary years with a proposed focus on:

- School Climate and Culture
- School Connectedness
- Root Cause Analysis



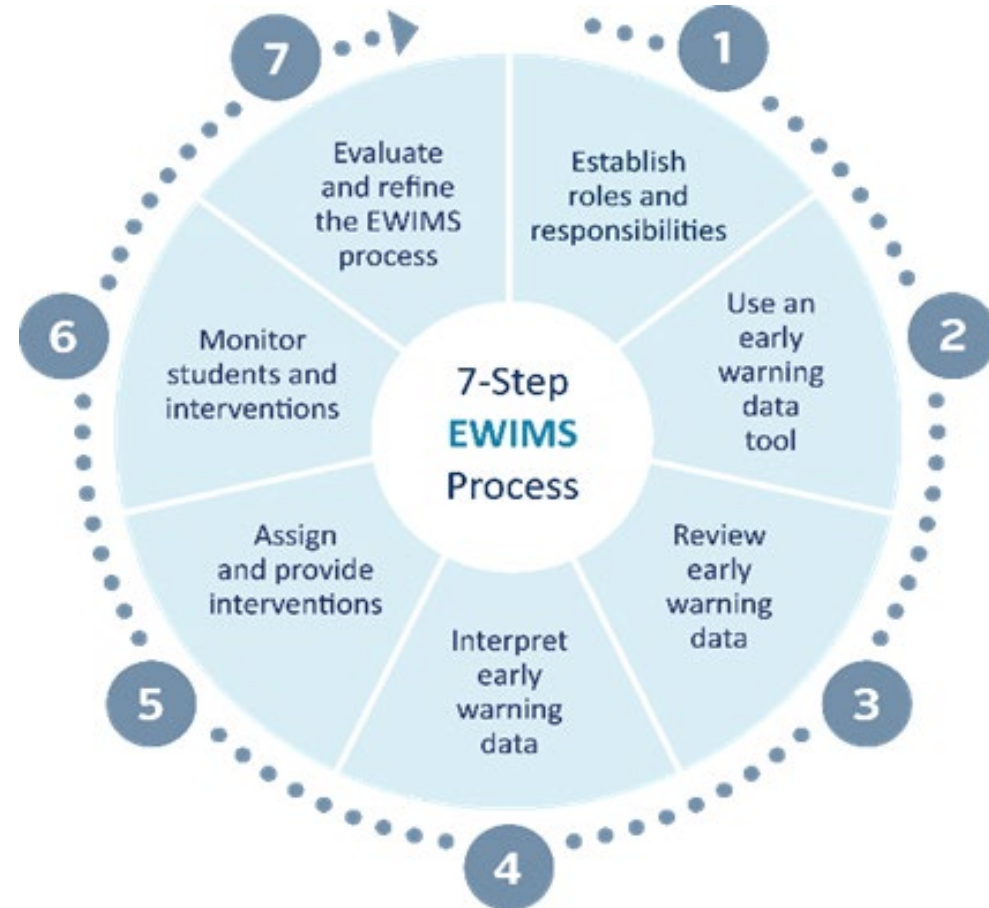
EWIMS: An Intentional Effort

Early Warning Intervention and Monitoring System (EWIMS)



What is EWIMS?

EWIMS is a seven-step, data-driven, decision-making process that helps educators identify, monitor, and support students who show symptoms of risk for dropping out of high school



EWIMS Development

- The National High School Center at American Institutes for Research (AIR) developed the seven-step **Early Warning Intervention and Monitoring System (EWIMS)**.
- EWIMS draws from research on the use of early warning system indicators in schools.
- The process reflects the need to move from identification to action.



Research Base for Early Warning Systems

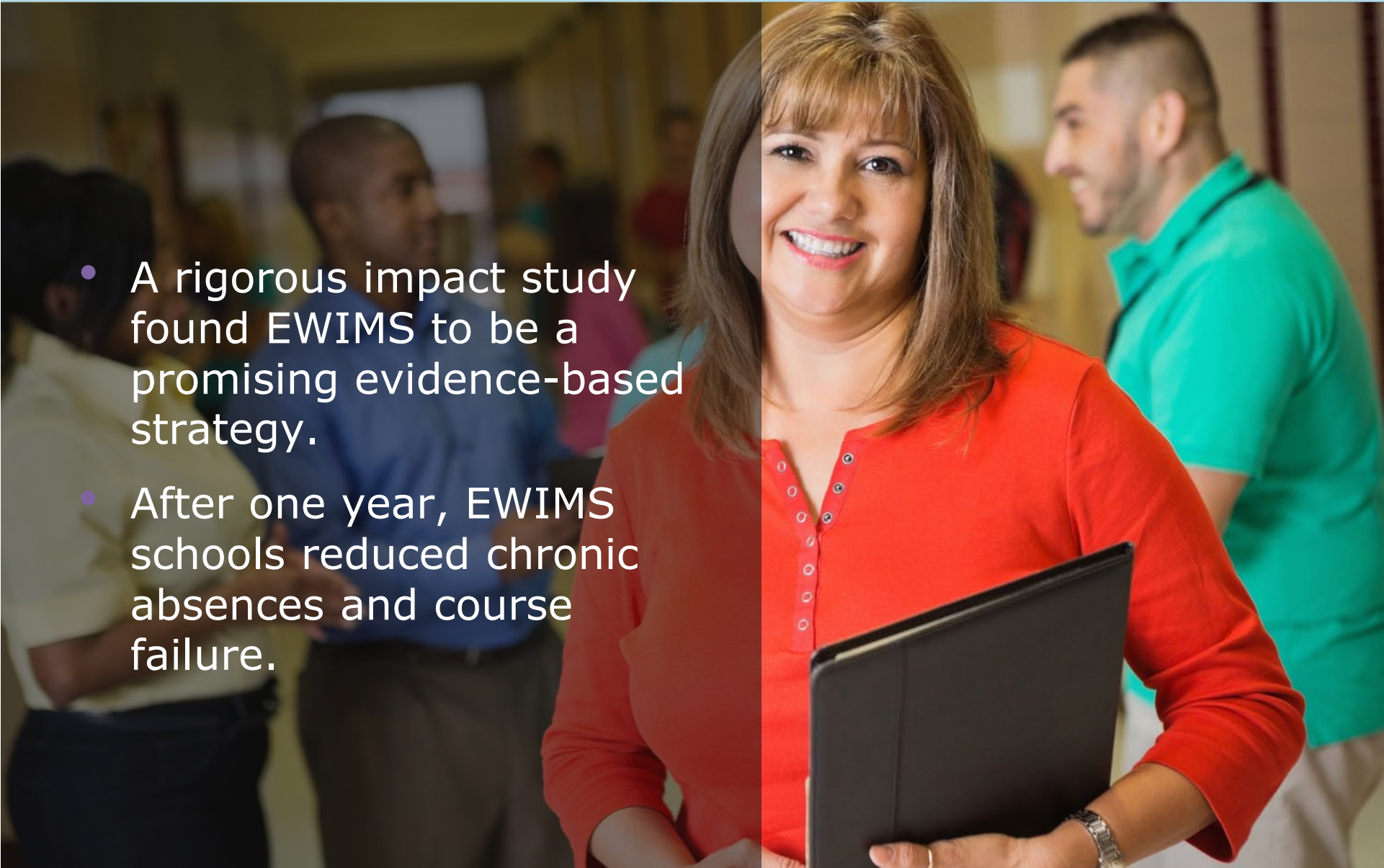
Johns Hopkins Everyone Graduates Center

- As early as the sixth grade, school-based factors can predict who will drop out.
- Attendance, behavior, and course performance are the strongest predictors of school dropout.
- These findings have been validated by state and district studies.



Research Base for EWIMS

- A rigorous impact study found EWIMS to be a promising evidence-based strategy.
- After one year, EWIMS schools reduced chronic absences and course failure.

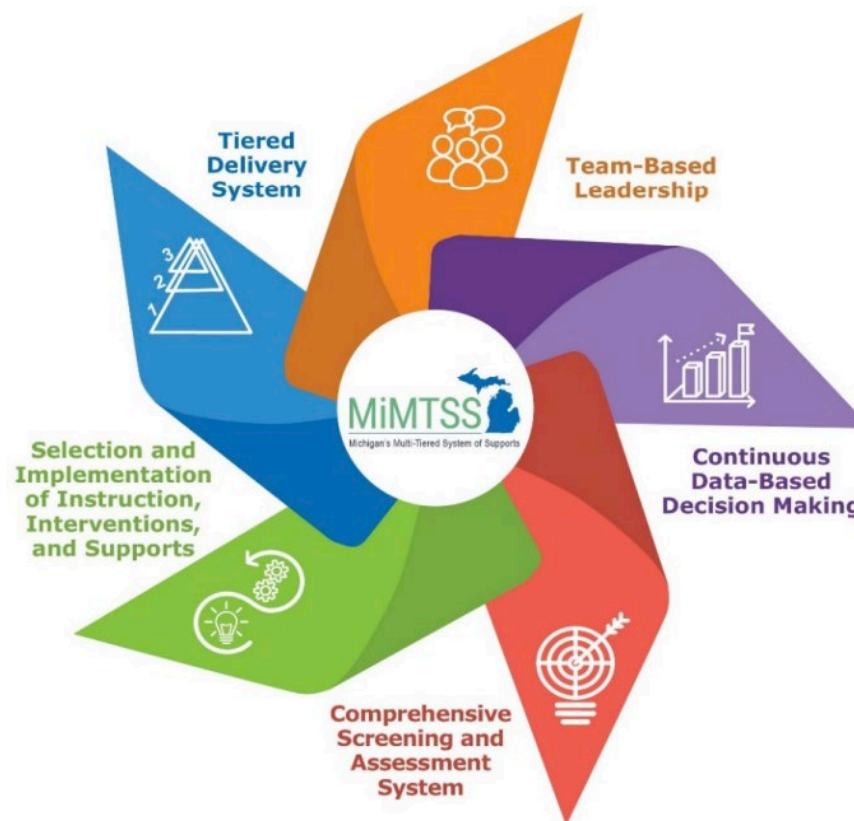
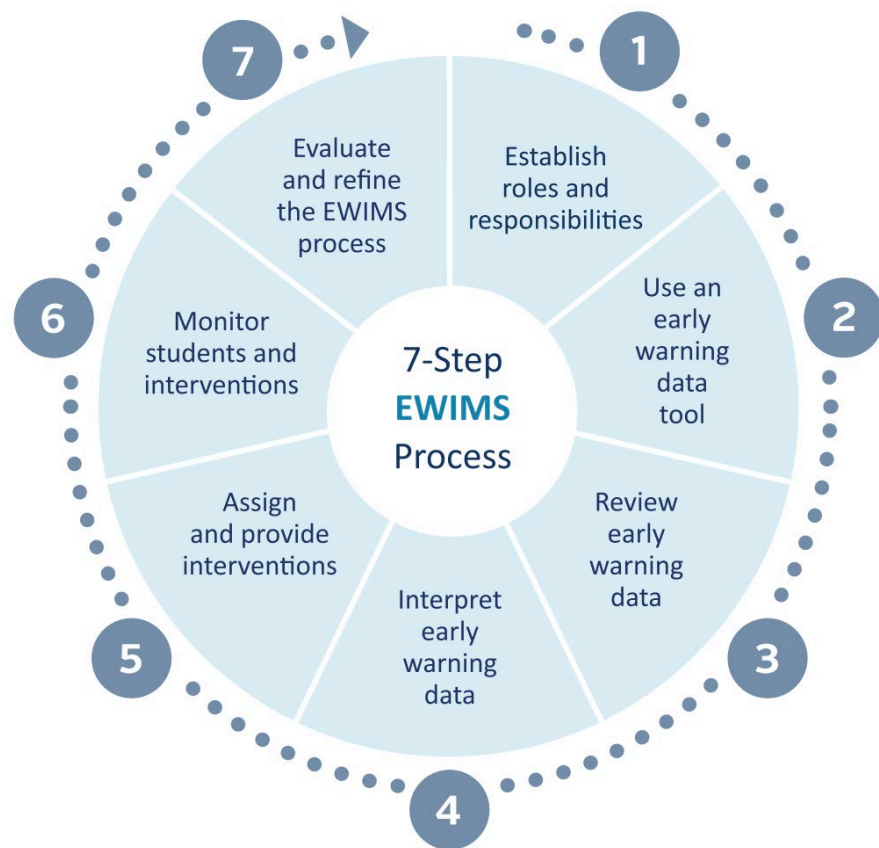


EWIMS Endorsement

EWIMS is listed in the National Dropout Prevention Center Model Programs Database with strong evidence.

<https://dropoutprevention.org/wp-content/uploads/2022/11/NDPC-Model-Programs-Database.pdf>





EWIMS is Leveraged within a Secondary Multi-Tiered System of Support Framework (MTSS)

Universal Resources to Support EWIMS Implementation

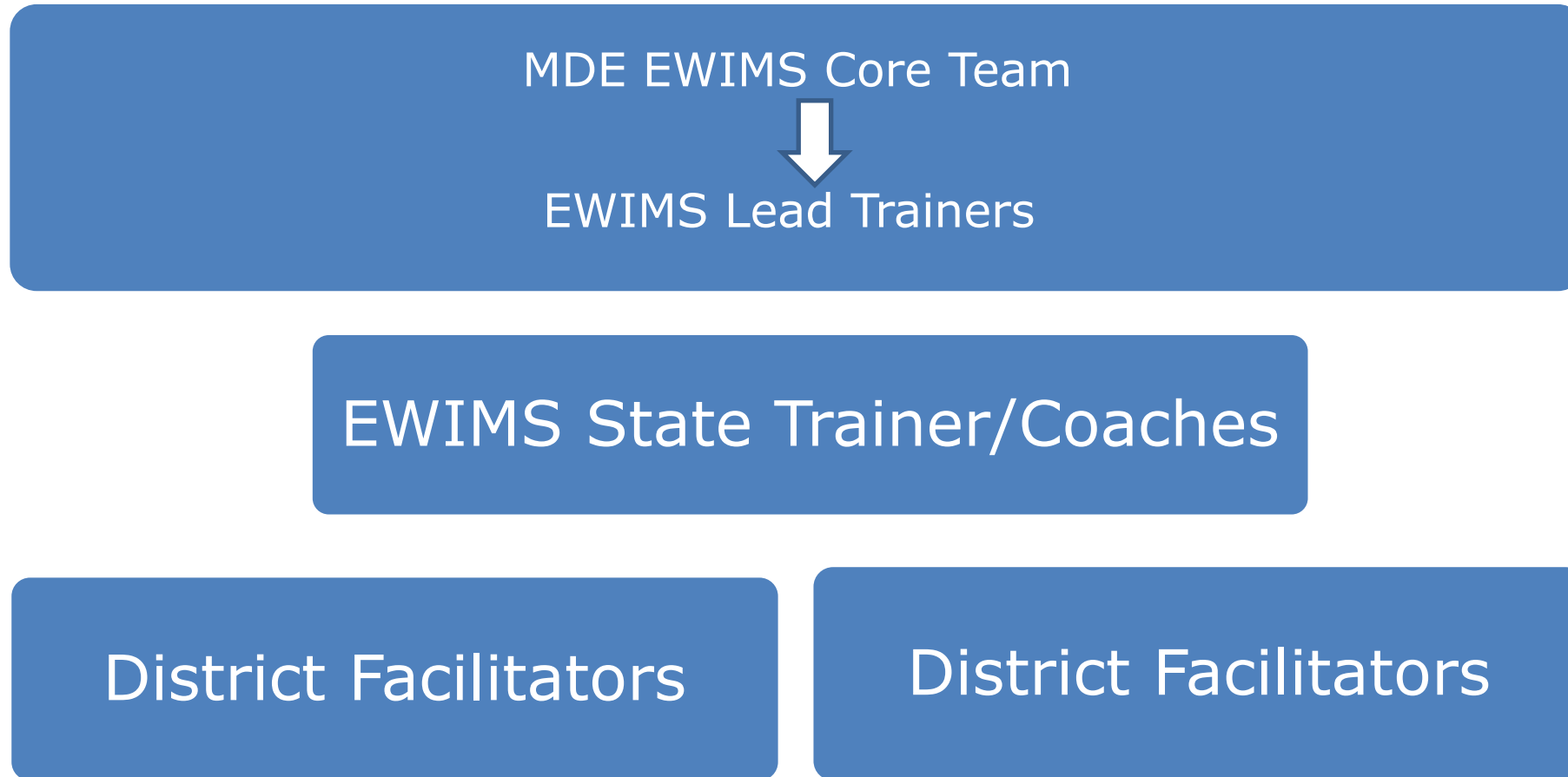
- *Videos*
- *EduPaths courses*
- *PowerPoints*
- *Facilitator guide*
- *Implementation guide*
- *Handouts*

<http://mi.gov/mde-ewims>

[EWIMS: Making a Difference in
the Lives of Students and Families
- YouTube](#)



Michigan Department of Education (MDE)
Early Warning Intervention and Monitoring System (EWIMS)
Implementation Support Network



MDE Coordinated Support

MDE has trained, certified, and contracted 10 EWIMS Trainer/Coaches who provide EWIMS training and implementation support to schools and districts across the state.

EWIMS Trainer/Coaches are currently working with:

- 22 schools identified for Comprehensive Support and Improvement (CSI)
- 1 school identified for Additional Targeted Support (ATS)
- 7 schools identified for Targeted Support and Improvement (TSI)



Capacity Building to Support EWIMS Implementation

- Provide implementation support network meetings 3 times per year
- Provide Implementation Science training
- Provide annual professional learning workshops
- Provide virtual EWIMS awareness training



What's Next?

- Monitor graduation rates in schools receiving EWIMS services over a three-year period
- Collect data in mid-July to identify additional schools that say they are implementing EWIMS
- Onboard additional EWIMS Trainer/Coaches
- Develop a model for collaborating with ISDs to increase the state's capacity to provide training and implementation to more schools



Questions?

Thank you

