



*Dr. Wanda Cook-Robinson,
Superintendent,
Oakland Schools*

*Kyle Guerrant, Deputy
Superintendent
Michigan Department of Education*

*Jamie Huber, Superintendent,
Cheboygan-Otsego-Presque Isle
Educational Service District*

Goal 8 of the State's Top 10 Strategic
Education Plan:

Provide Adequate and Equitable
School Funding

*State Board of Education
January 10, 2023*

Goals

1. Expand early childhood learning opportunities
2. Improve early literacy achievement
3. Improve the health, safety, and wellness of all learners
4. Expand secondary learning opportunities for all students
5. Increase the percentage of all students who graduate from high school
6. Increase the percentage of adults with a post-secondary credential
7. Increase the numbers of certified teachers in areas of shortage
- 8. Provide adequate and equitable school funding**



Metrics

Goal	Metrics
<p>Provide adequate and equitable school funding</p>	<ul style="list-style-type: none"> • Is there a weighted formula for poverty? Yes or no • Does the weighted formula match the School Finance Research Collaborative (SFRC) recommendation? Yes or no • What is the difference between the current funding formula and the SFRC recommendation? • Is there a weighted formula for English learners? Yes or no • Does the weighted formula match the SFRC recommendation? Yes or no • What is the difference between the current funding formula and the SFRC recommendation?



Metrics

Goal	Metrics
Provide adequate and equitable school funding	<ul style="list-style-type: none"> • Is there a weighted formula for students with disabilities? Yes or no • Does the weighted formula match the SFRC recommendation? Yes or no • What is the difference between the current funding formula and the SFRC recommendation? • Is there a weighted formula for career and technical education? Yes or no • Does the weighted formula match the SFRC recommendation? Yes or no • What is the difference between the current funding formula and the SFRC recommendation?



Metrics

Goal	Metrics
Provide adequate and equitable school funding	<ul style="list-style-type: none"> • Is there a dedicated funding amount per child for GSRP? Yes or no • Does the dedicated funding amount match the SFRC recommendation? Yes or no • What is the difference between the current funding formula and the SFRC recommendation? • Does the state provide funding for transportation? Yes or no • Does the funding for transportation match the SFRC recommendation? Yes or no • What is the difference between the current funding and the SFRC recommendation?



School Finance Research Collaborative

- The SFRC is a diverse group of business leaders and education experts, from Metro Detroit to the U.P., who agreed it was time to change the way Michigan's schools are funded.
- Created in 2017, the group worked with two well-respected national firms to produce the adequacy study.

School Finance Research Collaborative

In January 2018, the first study looked at the cost of educating students under Michigan law while accounting for differences in student needs and in schools themselves.

- Weighted funding was used to address those differences.

In June 2021, the SFRC released an update to account for inflation and changes in law.

Weighted Funding Formula

\$10,421

The Base Cost as updated in 2021

OaklandSchools

Final Recommended Per-Student Base Cost and Weights*

Final Recommendation	
Base Cost 2017	\$9,590
Size Adjustment	Adjusted by Formula
Poverty Weight	0.35
ELL	
WIDA 1-2	0.70
WIDA 3-4	0.50
WIDA 5-6/FELS	0.35
Special Education	
Mild	0.70
Moderate	1.15
Severe	State Reimbursement
CTE	Base cost plus 10% per CTE enrolled student
Preschool	14,155
Isolation	0.04

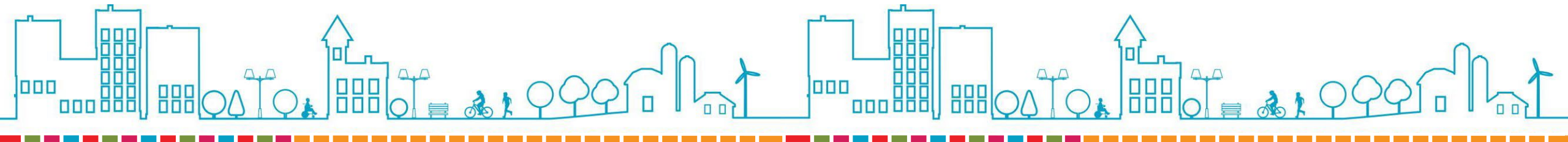
Areas to be Covered in Further Studies

The initial SFRC research acknowledged that there were three areas that needed further study:

- Transportation costs,
- A capital study looking at infrastructure and maintenance, and
- Cost of concentrations of high-poverty students.

SFRC Transportation Study

- In November 2022, the SFRC released a study on transportation costs in Michigan.
 - First, it analyzed transportation formulas from other states.
 - Next, it created 15 alternative ways to fund transportation.
- SFRC recommended using the "Lesser of Average or Actual" formula for funding transportation in Michigan.



SFRC Transportation Study

- The "Lesser of Average or Actual" formula uses density groups to determine the level of transportation funding for a district.
- The "Lesser of Average or Actual" approach reimburses districts up to their density group's average expense.
- The study identified four density groups determined by the number of square miles in the district divided by the number of riders.
- Based on this formula, about 60% of districts that participated in the study would receive full reimbursement from the state for transportation costs.

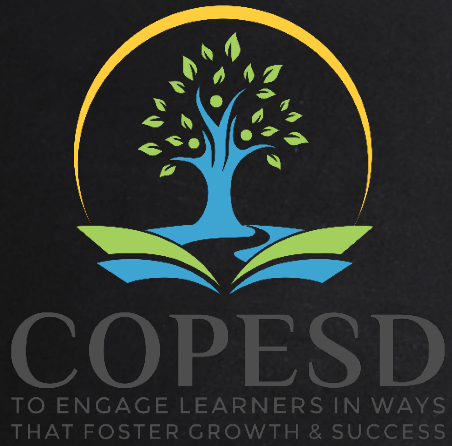


SFRC Transportation Study

- Total district transportation expenditures for 2018-19 were about **\$800 million**.
- Using 2018-2019 transportation data, applying the SFRC recommended "Lesser of Average or Actual" formula would cost the state **\$402 million** - offsetting **50%** of district transportation costs in 2018-2019.
- The state does not currently provide dedicated transportation funds to districts.

Note: 2018-19 transportation data was used because it was not affected by the pandemic.



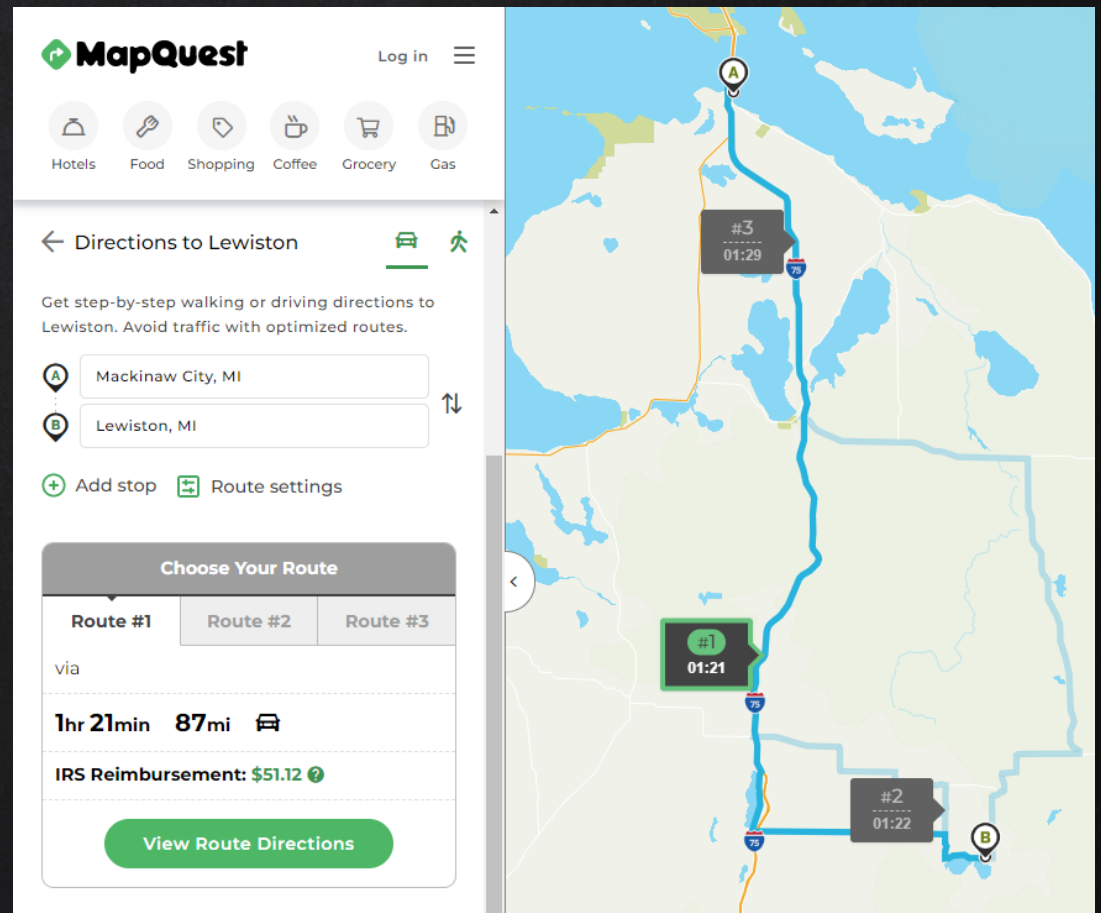
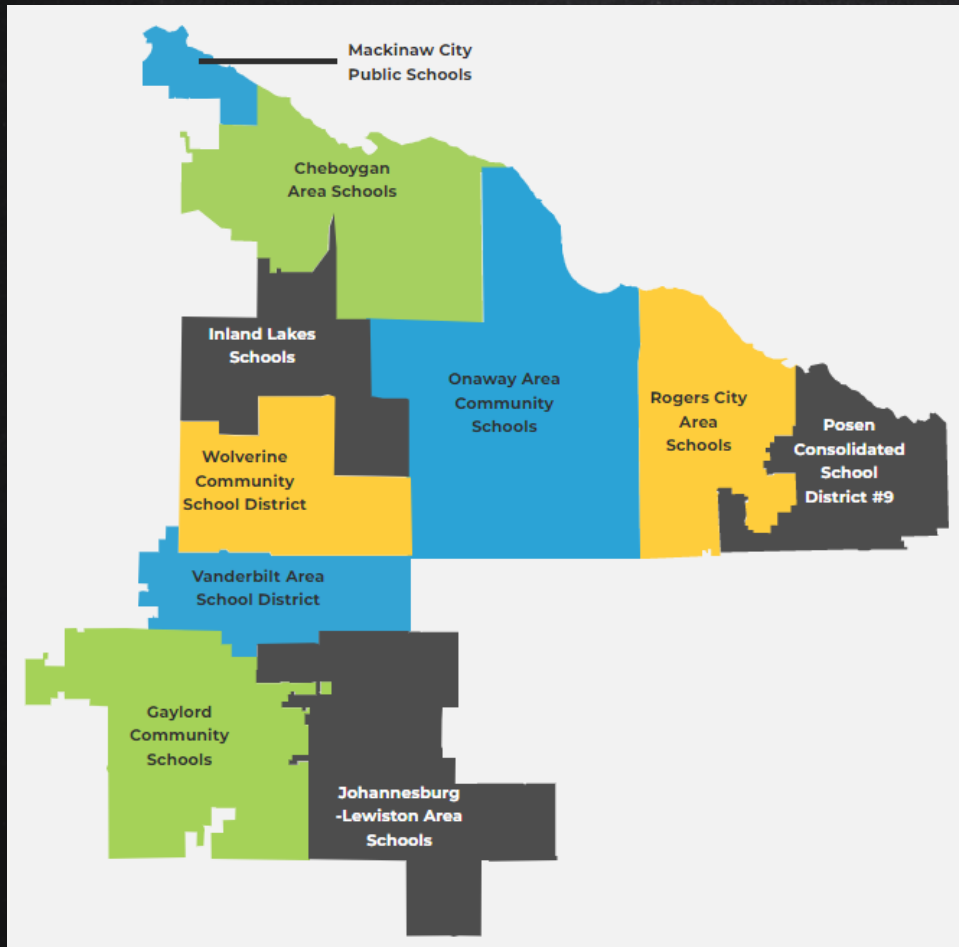


A “Ride” to school in a rural District

Mr. Jamie Huber, Superintendent
COPESD



A Few Maps for our “Drive” Together



21/22 Transportation Costs across COPESD Local Districts

DISTRICT	21/22 TRANSPORTATION COSTS	% OF TOTAL EXPENDITURES	TOTAL ANNUAL MILES	COST PER PUPIL
Cheboygan Area Schools	1,182,040	6.43%	199,080	\$762
Gaylord Community Schools	1,313,783	3.76%	241,617	\$466
Inland Lakes Schools	680,982	8.14%	67,666	\$1,133
Johannesburg-Lewiston Area Schools	544,971	6.47%	124,225	\$773
Mackinaw City Public Schools	103,140	3.52%	25,455	\$716
Onaway Area Schools	306,425	4.24%	86,115	\$575
Posen Consolidated Schools	282,086	10.64%	16,490	\$1,343
Rogers City Area Schools	269,874	4.37%	81,386	\$626
Vanderbilt Area School	35,724	2.27%	46,496	\$384
Woverine Community Schools	174,493	5.29%	39,253	\$681

**Total costs per pupil across COPESD's 10 local districts
range from \$384 to \$1,343 per pupil!**



A Bus Ride at Cheboygan Area Schools

- x Cheboygan is a 264 square mile district in size.
- x **Driver arrives at the CAS Bus Garage @ 5:15 a.m.** & completes their pre-trip before leaving by 5:35 a.m. to start his route.
- x First stop is at 6:10 a.m. where they pick up an elementary student who is on the bus until 7:45 a.m.
- x Morning Route transports between 55-60 students to school daily, making 31 stops (including 3 schools) & covering approx. 43 miles
- x The Same Afternoon route **transports between 65-70 students home daily, making 38 stops** (including 3 schools) & covering **approx. 48 miles.**

Student commute is 1 hour and 35 minutes




Getting to School at Johannesburg-Lewiston

- x JL is a 300 square mile district.
- x Driver arrives at 6:30 a.m. before starting their route at 6:45 a.m.
- x First student boards the bus at 6:52 a.m. and is on the bus until 7:55 a.m.
- x Route consists of 60 students on a given day over 33 stops over 43 miles.
- x Some stops are at a driveway or on a corner w/ up to 2-10 students
- x To access some Dual Enrollment courses, students may drive 45 miles to the nearest Community College.
- x As District buildings are 17 miles apart, a 5:30 athletic practice bus brings students to Lewiston for pickup...as some live 40 miles away from their school!



Alpena Busses-To Disney World and Back EVERY Day!



[DISTRICT](#)[NEWS & RESOURCES](#)[PARENTS & STUDENTS](#)[PROGRAMS](#)[SCHOOLS](#)

COVID-19 Plan

District Compliance Officers

Food Service

Good News

Graduate Profile

Human Resources

Special Education

Transportation

Title IX

For More Information

Main Switchboard
989-358-5200

Announcement Hotline
989-358-5001

Gordon Admin. Building
2373 Gordon Road
Alpena, MI 49707
989-358-5000
fax: 989-358-5041

One of the largest geographic districts in the State of Michigan, Alpena Public Schools covers more than 600 square miles, encompassing all of Alpena County as well as all of Presque Isle Township and a part of Krakow Township in Presque Isle County. Our well-organized fleet of buses transports 80 percent of the student body each day, safely traveling some 825,000 miles per year. Officially established as Michigan's first county-wide school district in 1963, Alpena Public Schools represents an aggregation of business people, farmers, professionals, service employees, children, parents, retirees, and clergy, all proud of their beautiful, bay-side community.

Our Mission

Our District's mission statement reflects our close connection with the people we serve: "Alpena Public Schools, in partnership with our community, teaches and challenges all students to become lifelong learners and productive citizens."

Board of Education Goals


APS STRATEGIC PLAN 2020
July 20, 2020 the Board of Education adopted a three-year strategic plan highlighting five areas of focus and goals to achieve.

- **Instructional Framework**
- **Social, Emotional and Behavioral**
- **Professional Learning**
- **Communication Plan**
- **Facility Maintenance and Renewal Plan**

Fascinating Facts

Here are some facts and statistics about our District.

- Our bus fleet transports students from every corner of our 604 square mile District in 118 daily bus routes. If combined end-to-end, all those routes would stretch from Alpena to Disney World and back - every day!



Log in

Hotels

Food

Shopping

Coffee

Grocery

Gas

Directions to Walt Disney World Resort

Get step-by-step walking or driving directions to Walt Disney World Resort. Avoid traffic with optimized routes.

A Alpena, MI

B Walt Disney World Resort

+ Add stop

Route settings

Choose Your Route

Route #1

Route #2

via

20hr 42min

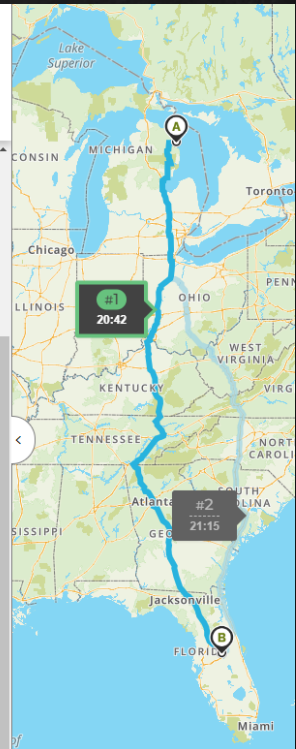
1390mi

🚗

IRS Reimbursement: \$813.41

🔗

View Route Directions

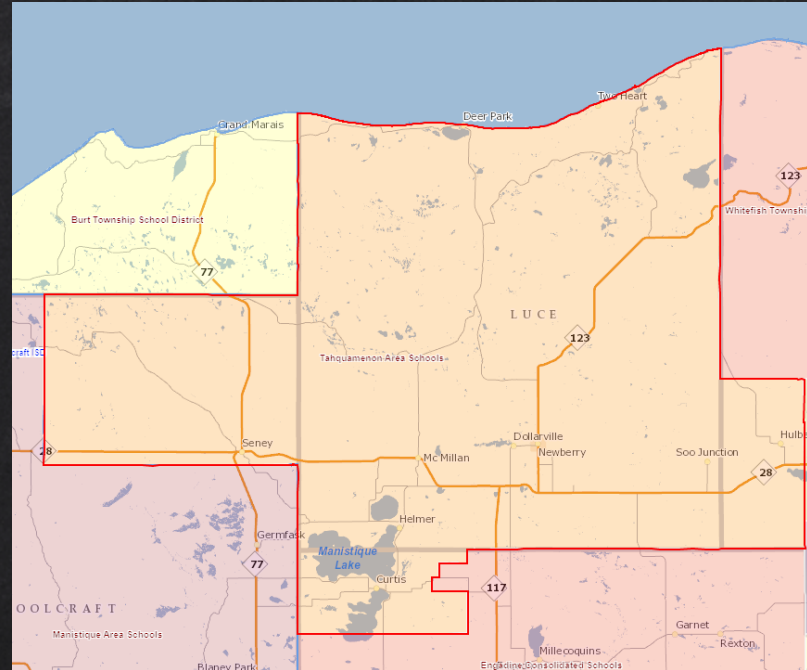


The map displays a blue route line starting from Alpena, Michigan (marked with a pin 'A') and ending at Walt Disney World Resort, Florida (marked with a pin 'B'). The route passes through Chicago, Illinois, and Atlanta, Georgia. Two route options are highlighted: Route #1 with a duration of 20:42 and Route #2 with a duration of 21:15. The map includes state and city labels, as well as geographical features like Lake Superior.



then there's the Tahquamenon Area Schools

- x District covers 1526 sq Miles
- x Annual Transportation Budget Costs is \$809,000
- x Equal to \$1,535 per student
- x One bus puts on around 170 miles PER DAY



- x \$809,000 could be used in many different ways that would benefit ALL TAS students. New furniture, offer more competitive wages to get teachers to come TAS and/or retain teachers, improve facilities, purchase of resources to give students the most up to date experiences.

“What a breath of fresh air it would be not to have to worry about budgeting for transportation and the fluctuation that budget is due to fuel costs and maintenance of a fleet, but to focus more on providing resources and opportunities for students. That is what education should be.”

Stacy Price - Superintendent



The costs associated with getting to school in rural and isolated districts shouldn't take away from the learning opportunities students have once they arrive...

2021-22 Pre-K-12 Funding

Local Revenue

- Local district millages to support foundation allowances
- ISD millages (e.g., operating and special education)

State Revenue

- At-risk funding, CTE, and other funding

Federal Revenue

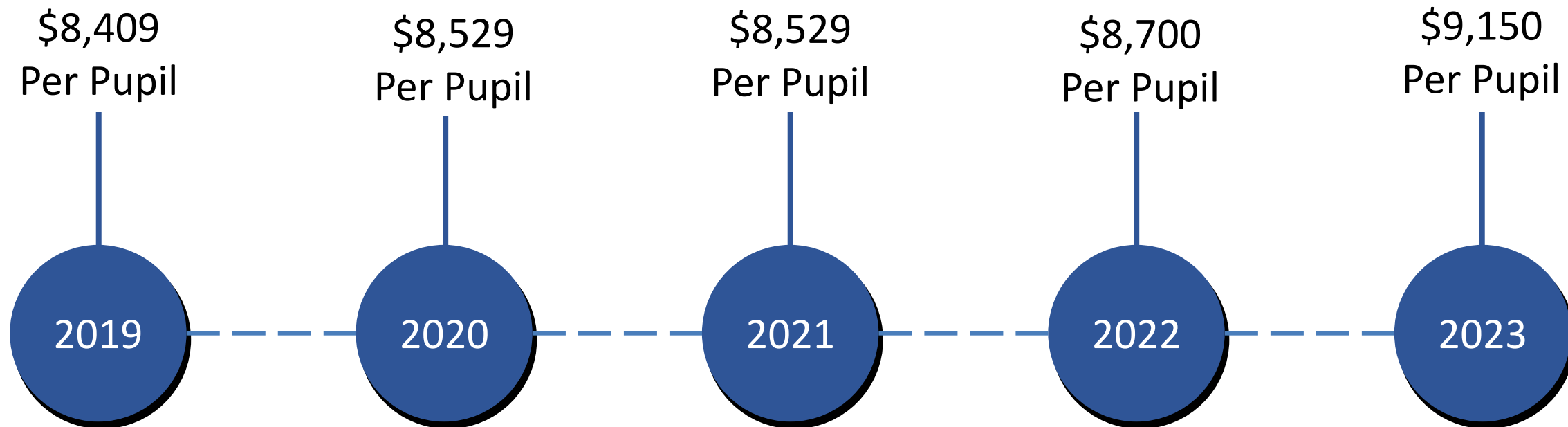
- Title funding, Individuals with Disabilities Education Act funding

Local Revenue	\$4,000,000,000
State Revenue	\$14,600,000,000
Federal Revenue	\$2,400,000,000
Total Funding for Pre-K-12	\$21,000,000,000

Note: Federal revenue does not include non-recurring pandemic relief funds.



Historical FY Per-Pupil Target Foundation Allowance



FY23 State Budget

Goal 8 - Provide adequate and equitable school funding

Different children have different needs; different needs have different costs. This budget includes another **\$480.7 million** to continue building a weighted funding model to address the different costs associated with educating students with different needs.



FY23 State Budget

Goal 8 - Provide adequate and equitable school funding

\$475 million in a School Consolidation and Infrastructure Fund to provide funding for the consolidation of school districts and create healthier and safer schools for students. (sec. 11x(7))*

No more than 50% of funds may be for infrastructure

\$20 million additionally for a state-wide infrastructure study

\$5 million additionally in grants available to districts and ISDs for consolidation feasibility studies (sec. 11x(6))

*Non-Recurring



High Needs Poverty

- No definition of high needs poverty exists
- We consider the total number of children eligible for free/reduced price lunch relative to a school building's total population
- Cost for buildings with an eligible population of 75% or higher: **\$434 million**
- Cost for buildings with an eligible population of 90% or higher: **\$175 million**



Students with Disabilities

- 2020-21 special education revenues: **\$2.7 billion**
- 2020-21 special education expenditures: **\$3.4 billion**
- Districts must use regular education funds to bridge the gap
- Michigan State University estimated that in 2014-15, districts used about **\$534 per general education pupil** to pay for special education costs



Capital Costs

- SFRC recommended a **\$400 per student** figure to allow districts to address ongoing maintenance issues, which would cost the state around **\$550 million**
- 2020-21 total capital costs: **\$3.7 billion**
 - Operations and maintenance cost: \$1.7 billion
 - Building acquisition, construction, and improvement costs: \$2 billion



Goal 8: Summary

Even with recent historic state investments in public education, based on the 2021-22 Pre-K-12 funding of **\$21 billion**, Michigan schools continue to be underfunded by **\$2 billion** to **\$5.5 billion** annually.

SFRC Recommendations Cost Range		
Base Cost	\$14,200,000,000	\$14,200,000,000
Poverty Weight	\$2,400,000,000	\$2,400,000,000
English Learner Weight	\$600,000,000	\$600,000,000
Special Education Costs	\$3,400,000,000	\$3,400,000,000
Career/Tech Ed Weight	\$100,000,000	\$100,000,000
Universal Preschool	\$1,300,000,000	\$1,300,000,000
SFRC Transportation Study (2022)	\$400,000,000	\$400,000,000
High Need Poverty Weight	\$175,000,000	\$434,000,000
Capital Costs	\$550,000,000	\$3,700,000,000
Total	\$23,125,000,000	\$26,534,000,000



FY24 Budget Development Timeline

Week of

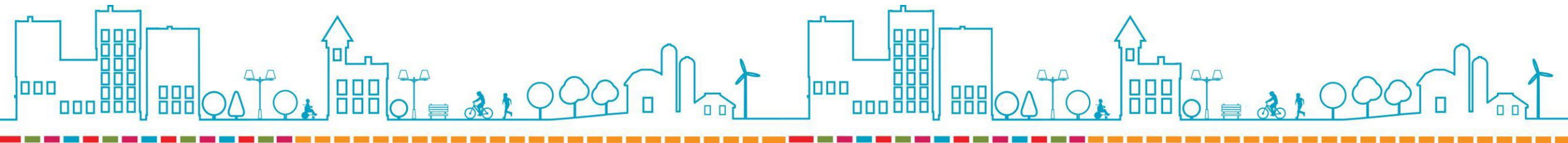
February 6: Governor Whitmer presents her executive budget recommendation to the House and Senate appropriations committees.

February/

March: State agency budget presentations to respective house and senate appropriations subcommittees.

April/May:

Appropriations subcommittees draft and act on appropriations bills.



Thank You!

