



Goal 3

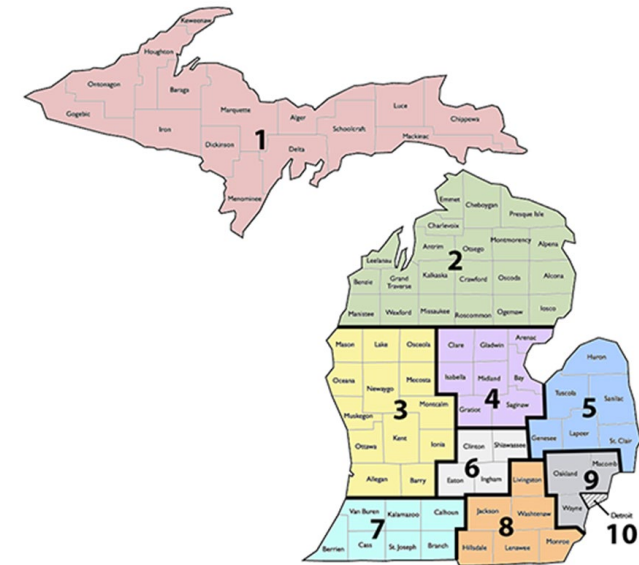
Improve the Health, Safety, and Wellness of All Learners

Michigan State Board of Education Meeting
June 14, 2022



Addressing Student Mental Health through Social Emotional Learning (SEL) and the Children's Mental Health (CMH) Network

- Problem: The pandemic intensified the mental health needs of children and highlighted the challenges facing families and children.
- Purpose: Build capacity for Social Emotional Learning (SEL) and school-based mental health supports for children.
- 25+ representatives meet monthly and include:
 - Teachers
 - Student Support Professionals
 - Building, District, and Regional Administrators
 - Professional Organization Members
 - Governor's Office



Social and Emotional Learning Competencies


1. Self-Awareness - the ability to consider and understand emotions, thoughts, values, and experiences, and how these can influence your actions.
2. Self-Management - focuses on an individual's ability to regulate and control their emotions, thoughts and behaviors.
3. Responsible Decision Making - the ability required to make positive and constructive choices based on individual and social factors.
4. Social Awareness - improving skills to empathize with others, to take the perspective of those in different situations to you, and to make sure you are treating others fairly.
5. Relationship Skills – the ability to make positive connections with others in order to establish and maintain healthy, mutually rewarding relationships.



Funding and Supports for Student Mental Health – SEL/CMH Network

- Campaign results:
 - 9,400+ educators
 - 30% of districts had completion in each building
 - All districts but 4 had at least 1 person complete the course
- Outreach & Resources
 - Centering Student Voice in SEL Guidance
 - How to talk about SEL with Others
 - Including Parent Voice in SEL/CMH programming (Michigan Virtual offering of Suite 360, Partner Subcommittee of the Network, 31n Parent Subcommittee)
- SEL Community of Practice Pilot (19 districts) funded by the Michigan Health Endowment Fund

Children matter.
You matter.
Learn SEL!



Core Features of a Comprehensive School Mental Health System

1  Well-Trained
Educators and
Specialized
Instructional
Support Personnel

2  Family-School-
Community
Collaboration
and Teaming

3  Needs Assessment
and Resource
Mapping

4  Multi-Tiered
System
of Support

5  Mental Health
Screening

6  Evidence-Based
and Emerging
Best Practices

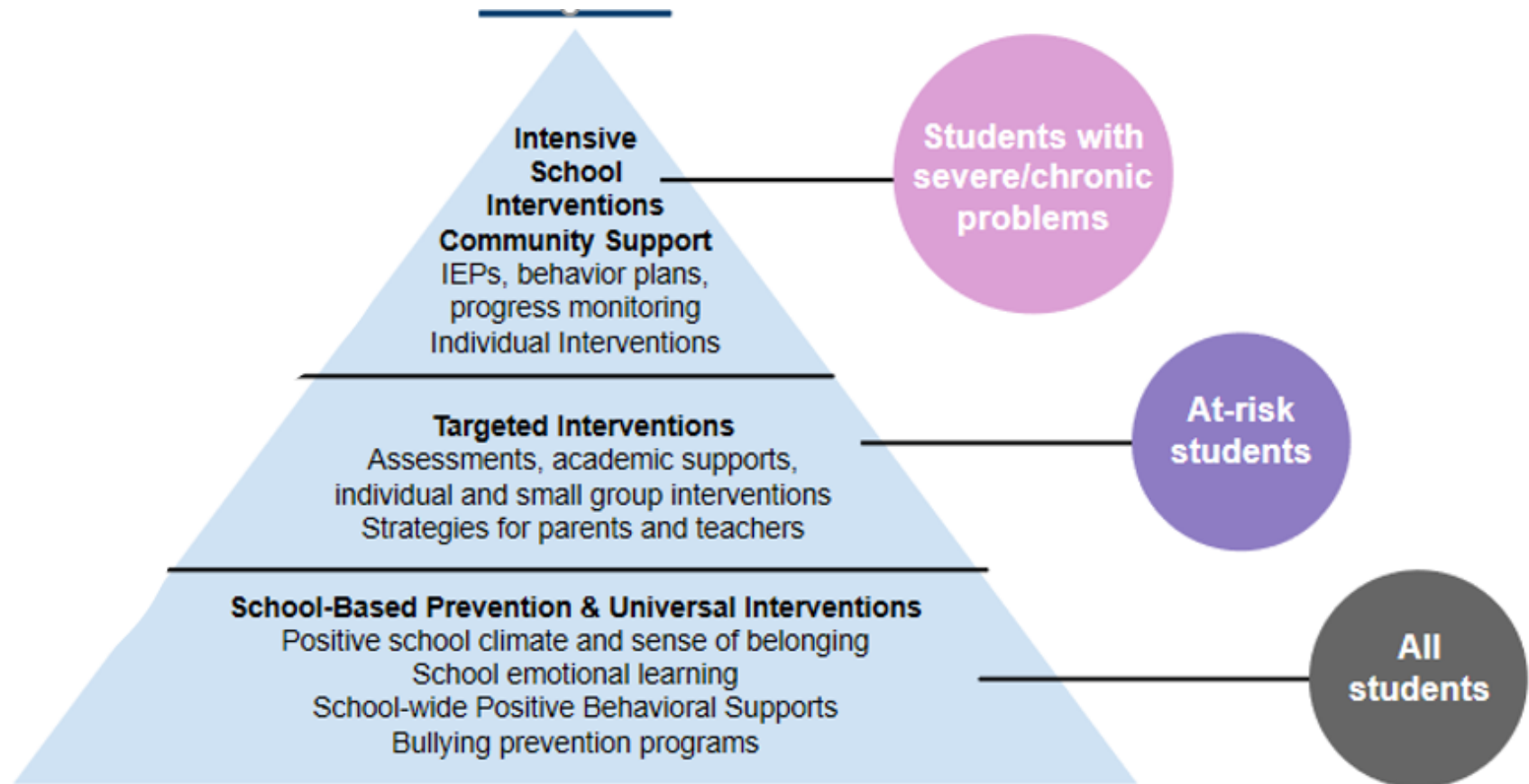
7  Data

8  Funding

Including Social
Emotional Learning



Providing Comprehensive and Integrated Mental Health Services in Michigan Schools



31n Funding

- Section 31n has 2 primary sections: subsection 5 = child and adolescent mental health centers (MDHHS); subsection 6 = direct service providers hired to work in schools (MDE)
- In 2018, Michigan went from \$0 in state investment in student mental health to \$31.3 million, of which \$16.5 million was for 31n(6).
 - Approximately \$11.79/student
- In 2022, 31n was funded at \$54 million, of which \$37.8 million for 31n(6)
 - Approximately \$27/student



31n Funding

31n Funding	2019-2020	2020-2021
Districts served	291 (762 buildings)	365 (887 buildings)
Students attended a school with a new 31n(6) mental health provider	330,320	386,150
Students received screenings or assessments through a 31n(6) provider	12,030	46,203
Students received services from a 31n(6) provider	8,885	10,017



31o Funding

- 284 districts will receive funding (of the 352 that applied)
- 721,444 students enrolled in funded districts
- \$105,425,704 total of the \$240 million available will go out
- Totals hired:

Profession	FTEs Prior to 31o in funded districts	FTEs Hired	% Increase
Counselors	1,197.2	156.7	13.1%
Nurses	142.2	139.2	97.9%
Psychologists	354.1	59.3	16.7%
Social Workers	947.3	247.3	26.1%
Totals:	2,640.8	602.5	22.8%



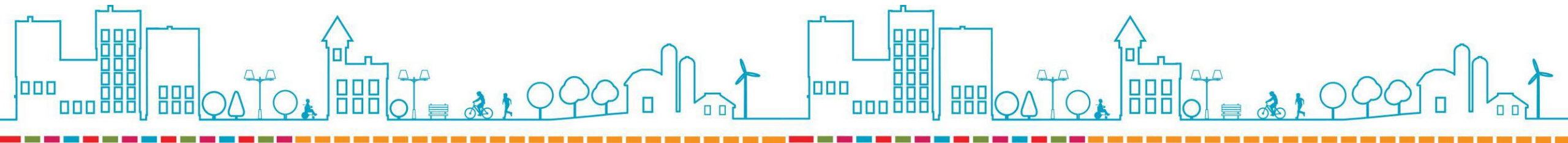
What is the difference?

31n:

- Funding starts with the ISD
- Schools using 31n funds to hire providers must seek Federal Medicaid match (Caring 4 Students or C4S) and these matching funds should be used to expand services
- This expanded services to be available for all students, NOT just for Medicaid eligible students or special education students

31o:

- Funding starts with the local district
- No Federal Medicaid match required, although it is encouraged for sustainability
- Only four eligible provider types
- Salaries and benefits are reimbursed at:
 - 100% in year 1
 - 66% in year 2
 - 33% in year 3
 - \$0 in year 4



What's Next

- Seeking funding for the Behavioral Health Learning Collaborative of Michigan, an online training and resource center
- Expand the use of needs assessments and resource mapping in order to determine next provider types to hire at the local level
- Universal screening where resources are available
- Connecting school-based providers with community partners so they can securely and appropriately exchange student health information
- Continue to expand lessons learned between the field and the SEL-CMH network



Keeping student perspectives at the heart of our efforts: Student Voice



Thank You

**Kyle Guarrant, Deputy Superintendent of
Finance and Operations**

**Dr. Diane Golzynski, Director, Office of Health
and Nutrition Services**

**Leisa Gallagher, School District Consultant,
Office of Health and Nutrition Services**

