

## How to administer a JYNNEOS vaccine intradermally.



### Step 1

Locate and clean a site for injection in the inner (volar) surface of the forearm.



### Step 2

While pulling the skin taut, position the needle with the bevel facing up and insert the needle at a 5- to 15-degree angle into the dermis.



### Step 3

Slowly inject 0.1 mL intradermally. This should produce a noticeable pale elevation of the skin (wheal).



### Step 4

Observe patients for 15 minutes after vaccination or 30 minutes if they have a history of anaphylaxis to gentamicin, ciprofloxacin, chicken or egg protein.

## Additional Resources:

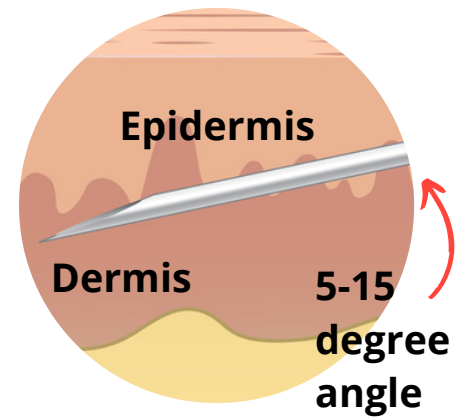
Vaccine Administration and Preparation: [Standard Regimen](#) | [Alternate Regimen](#)

[Watch a video demonstration from the CDC.](#)

[View the JYNNEOS Vaccine Clinical Considerations.](#)

Intradermal (ID) administration involves injecting the vaccine superficially between the epidermis and the dermis layers of the skin, typically of the volar aspect (inner side) of the forearm. If the volar aspect of the forearm is not an option (e.g., strong patient preference), ID administration of vaccine may be performed at the upper back below the scapula or at the deltoid.

Producing a noticeable pale elevation of the skin (wheal) with the ID injection is desirable but not required. However, if administered ID and there is a lower than authorized dose (leakage) then repeat the ID dose immediately. If vaccine leakage occurs with two ID vaccinations on the same day, administer 0.5 mL subcutaneously. Note: absence of a wheal without vaccine leakage may be counted as valid administration.

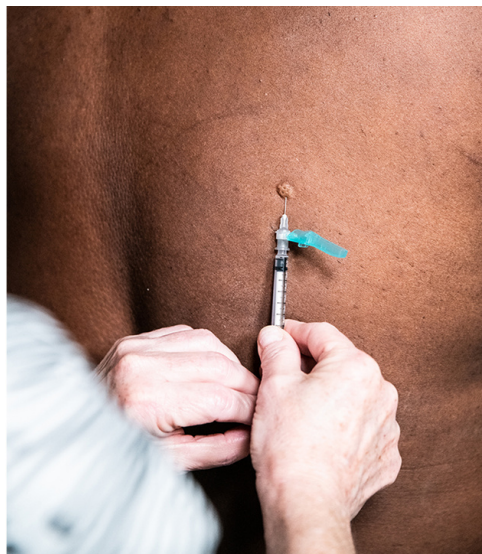


## Additional intradermal placement sites.

Follow step-by-step instructions for intradermal injection of the inner (volar) surface of the forearm.



**Deltoid**



**Below Scapula**