



# Children's Trust Fund

Protecting Michigan's Children

**2018 - 2019**

## **STATE PLAN**

*for Strengthening Michigan's  
Children & Families*



**The Children’s Trust Fund** serves as a voice for Michigan’s children and families and promotes their health, safety and welfare by funding effective local programs and services that prevent child abuse and neglect.

The 2018-2019 State Plan for Strengthening Michigan’s Children & Families describes the ways in which the Children’s Trust Fund (CTF) has organized efforts to respond to its critical mission to prevent child abuse and neglect.

**Highlights and Collaborative Partners** . . . . . 2-3

**Direct Service Grants** . . . . . 4-8

**CTF Revenues and Expenses** . . . . . 8

**Map of Funded Programs** . . . . . 9

**Local Councils** . . . . . 10-16

**Special Programs and Initiatives** . . . . . 17-18

**Fund Development and Donors** . . . . . 19-29

**Children’s Advocate Award Recipients & Artists** . . . . . 30-31

**Board of Directors** . . . . . 32-33

**Quotes from Local Councils**

**“The Children’s Trust Fund means that I have an organization with people that I can always look to, not just funding but for support and guidance and help and encouragement.”**

– Karen Staub

**“If there was no CTF, I think it would take us back 40 years when we were just a small organization of 5 people”.**

– Jyoti Gupta

**“If we didn’t have the funding from CTF, our Council probably wouldn’t exist.”**

– Renee Johnson

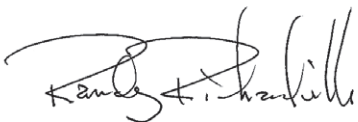
# Message from the Leadership

**On behalf of our Board of Directors, Children's Trust Fund staff and our state and local partners, it is our pleasure to present the State Plan for the Prevention of Child Abuse and Neglect, 2018-19.**

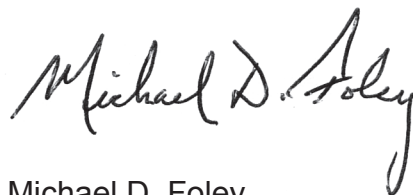
The Children's Trust Fund is Michigan's long standing state leader for child abuse and neglect prevention efforts. We support a statewide network of 73 local councils that bring a voice to the critical role of prevention in the full array of services for children and families. Currently we fund more than 30 communities for direct services which target the needs of the most vulnerable and challenged families. We lead or collaborate on critical policy and education efforts on research and cutting edge approaches to serving families.

The Children's Trust Fund (CTF) was established in 1982 as an organization to lead child abuse and neglect prevention efforts for the state of Michigan. The vision for CTF was that of Dr. Ray Helfer, a pediatrician from Lansing who at the time was a nationally recognized expert on child abuse and neglect and its consequences for the children who were victims. Dr. Helfer recognized the need for a protected fund that would be available to serve families who may have risks and challenges in their circumstances and would benefit from family support. Further, he recognized that, if such a fund was to be stable, it needed to be protected and insulated from resources that are used to intervene once abuse or neglect has occurred. His vision led to the creation of Michigan's Children's Trust Fund.

This biennial report and plan contains information both on the work with which we are currently involved in as well as our plans moving forward for continuous quality improvement. We remain committed to being a voice in the public policy arena for child abuse prevention services. We hope that this report inspires you to be a partner in our efforts to make Michigan the best place for all children to reach their fullest potential.



Randy Richardville  
*Chair, Board of Directors*  
*Children's Trust Fund*



Michael D. Foley  
*Executive Director*  
*Children's Trust Fund*



Luci Nelson,  
Age 9

# Highlights and Collaborative Partners

## Major Leadership Initiatives

- Collaborate with more than 15 committees or groups related to prevention, early childhood, and child welfare issues including the Michigan Adverse Childhood Experiences Initiative State Leadership Team; Great Start Systems Team; the University of Michigan Child Abuse and Neglect planning committee; the Parent Leadership in State Government Advisory Board; the Parenting Awareness Michigan (PAM) steering committee.
- Preside as the state lead for Strengthening Families in Michigan.
- Lead training and education efforts to broaden the understanding of the Adverse Childhood Experiences study.
- Preside as Michigan's lead for the infant head trauma prevention Period of PURPLE Crying program in conjunction with the National Center on Shaken Baby Syndrome.
- Facilitate parent leadership training and other capacity building efforts for parents to learn with representatives from CTF-funded programs.
- Administer the Citizen Review Panel for Prevention.
- Operate as the state chapters for Prevent Child Abuse America and the National Alliance of Children's Trust and Prevention Funds.
- Serve on the state's Mandated Reporter Curriculum Development Committee.
- Participate on the Michigan Infant Safe Sleep Advisory Committee, which is composed of governmental and nonprofit agencies, to create and implement a state plan to promote infant safe sleep practices with the goal of eliminating infant deaths due to suffocation and/or strangulation.



**Eva Fischer,**  
Age 11



# Highlights and Collaborative Partners

## Collaborative Partners

*CTF staff work with numerous agencies, serve on committees, and lead initiatives to strengthen and inform our prevention work, including:*

- Circle of Parents®
- Citizen Review Panel for Prevention
- Early Childhood Investment Corporation
- Great Start Systems Team
- Injury Community Implementation Group
- Lansing Area Exchange Club
- Maternal, Infant and Early Childhood Home Visiting Program
- Merrill Palmer Skillman Institute for Child and Family Development – National Steering Committee
- Michigan’s Children
- Michigan Coalition for Children and Families
- Michigan Department of Health and Human Services
- Michigan Domestic Violence Prevention and Treatment Board
- Michigan Fatherhood Coalition
- Michigan KIDS Count
- Michigan League for Public Policy
- National Alliance of Children’s Trust and Prevention Funds
- Parent Leadership in State Government Advisory Board
- Parenting Awareness Michigan
- Prevent Child Abuse America
- Michigan Infant Safe Sleep Advisory Committee
- Signature Auction Event Advisory Committee
- University of Michigan Child Abuse and Neglect Conference



**Eva Fischer,**  
Age 11

# Direct Service Grants

## Overview

The purpose of CTF Direct Service is to fund child abuse and neglect prevention efforts in communities throughout Michigan. Funding is awarded through a competitive bid process and is focused on families with risk factors or challenges that, if left unattended, could impact positive parenting and optimal child development. The goal is to work collaboratively with other services and funding sources so that communities build a framework of protection and support for all children and families. When this is done comprehensively, the incidences of child abuse and neglect are reduced. *Read more at [www.michigan.gov/ctfdirectservice](http://www.michigan.gov/ctfdirectservice).*

## Direct Service Programming

In making grants for Direct Service, CTF places a high value on assuring the effective and efficient use of the grant funds. This is accomplished both through the planning and implementation at the local level as well as by the ways in which CTF provides technical assistance and support. The following are examples of how these values are put into practice.

- Prospective Direct Service grantees develop their proposals based on locally determined priorities. CTF Local Councils review and endorse all proposals prior to submission to ensure that proposals are aligning with community needs.
- All CTF Direct Service grantees are required to coordinate and collaborate with local agencies on a continual basis.

## CTF Support to Direct Service

*CTF provides ongoing support for its grantees, including:*

- Host bi-monthly Direct Service workgroup meetings, some including guest speakers to increase knowledge on prevention related topics.
  - Sponsor an annual training which brings together international, national and local experts in the field of child abuse and neglect prevention.
  - Provide new grantee orientation on data reporting, technical support and CTF.
  - Visit grantee sites for program support, monitoring, and quality assurance.
- 
- CTF plans and manages a bi-monthly phone conference workgroup meeting with all Direct Service grantees. The purpose is to provide a forum for sharing information and ideas; exploring strategies to strengthen practices and programs; and discussing technical assistance and training needs.
  - Grant activities are monitored on an on-going basis – both quantitatively and qualitatively – to assure service level benchmarks are reached and intended outcomes are addressed.
  - A client assessment tool is required to be used by all Direct Service grantees to ensure the delivered programming met the needs of clients in the community.

# Direct Service Grants

## Strengthening Families Approach - Five Protective Factors

Research studies support the common-sense notion that when protective factors are well established in a family, the likelihood of child abuse and neglect diminishes. Protective factors build family strengths and a family environment that promotes optimal child and youth development.

**Parental Resilience:** Resilience is the ability to manage and bounce back from all types of challenges that emerge in every family's life and knowing how to seek help when necessary.

**Social Connections:** Networks of support are essential to parents. Social connections provide emotional support, help solve problems, offer parenting advice and give concrete assistance to parents

**Concrete Support in Times of Need:** Meeting basic economic needs like food, shelter, clothing and health care are essential for families to thrive.

**Knowledge of Parenting and Child Development:** Accurate information about child development and appropriate expectations for children's behavior at every age helps parents see their children and all youth in a positive light and promotes their healthy development.

**Social and Emotional Competence of Children:** Challenging behaviors or delayed development create extra stress for families. Early identification and assistance for both parents and children can head off negative results and keep development on track.

## Local Efforts Funded by Direct Service Grants

CTF Direct Service grants strengthen families through the use of the protective factors framework (see insert), a researched based approach to serving children and families. When used in a high quality and comprehensive way, it strengthens families by building resiliency, and mitigates the circumstances that can result in child abuse and neglect. Examples of currently funded services using the protective factors framework follow.

- Home visitation
- Specialized support for fathers and families with an incarcerated parent
- Parent education classes and parent support groups
- Respite care
- Youth mentoring programs

## 2018-2019 Plan

- A new series of CTF Direct Service grants will be awarded through a competitive bid process in fiscal years 2018 and 2019. CTF will assure that funded services are designed to serve at-risk families which are the focus of these funds.
- CTF will continue to provide training, orientation and technical assistance to Direct Service grantees on a variety of topics including: evaluation, data collection, and year-end reporting.
- CTF will continue to host the Direct Services work group on a bimonthly basis. Topics of interest will be solicited from grantees. Discussions will help guide the technical assistance and support to be provided by CTF.
- CTF will broaden the use of year-end outcome reports submitted by all grantees. Once reports are submitted, CTF will schedule calls to address the following:
  - Review the strengths of the work.
  - Assess any challenges that grantees experience reaching intended outcomes.
  - Discuss the kinds of technical support needed to improve the services delivered with grant funds.

# Direct Service Grantees 2015-2017

## **Arbor Circle**

Kristin Gietzen  
616-456-7775 ext.1215  
kgietzen@arborcircle.org  
www.arborcircle.org

## **Berrien County Health Department**

Susan Holcomb  
269-926-7121 ext. 5249  
sholcomb@bchdmi.org  
www.bchdmi.org

## **Bethany Christian Services**

Mark Dillingham  
616-307-7115  
mdillingham@bethany.org  
www.bethany.org

## **Big Brothers Big Sisters of Metropolitan Detroit**

Beth O'Connor  
313-309-0500  
beth.oconnor@bbbsdetroit.org  
www.bbbsdetroit.org

## **Big Brothers Big Sisters of the Bay Area**

Tanya Ettenhofer  
906-789-0060  
tschuster01@gmail.com  
www.bbbsbayarea.org

## **Cadillac Area OASIS/Family Resource Center**

Julie Hamilton  
231-775-7299  
julie.hamilton@cadillacoasis-frc.org  
www.cadillacoasis-frc.org

## **Calhoun Intermediate School District**

Susan Clark  
269-986-6275  
clarks@calhounisd.org  
www.calhounisd.org

## **CAN Council Great Lakes Bay Region**

Vera Harrison  
989-752-7226  
vharrison@cancouncil.org  
www.cancouncil.org

## **Caring & Sharing Family Life Services**

Marie Barks  
989-224-1010  
mabarks@yahoo.com  
www.facebook.com/  
caringsharingfamilylifeservices

## **Catholic Charities West Michigan**

Pam Cohn  
616-356-6250  
pcohn@ccwestmi.org  
www.ccwestmi.org

## **Catholic Family Services**

Kerry Williams  
269-381.9800 ext 217  
KerryWilliams@ccdok.org  
www.ccdok.org

## **Catholic Social Services of Washtenaw County**

Cathi Kelley  
734-544-2905  
ckelley@csswashtenaw.org  
www.csswashtenaw.org

## **Child & Family Services of NE MI**

Meg Nisbet  
989-356-4567  
nisbetm@cfsnemi.org  
www.cfsnemi.org

## **Children's Assessment Center**

Tanya Muehlbauer  
616-336-4265  
kidzhaverights@cac-kent.org  
www.cac-kent.org

## **Community Fatherhood**

Gilbert Ortiz  
269-282-1340  
gilberto@cfatherhood.org  
www.cfatherhood.org

## **Eaton Regional Education Services Academy**

Dawn Pray  
517-541-8717  
dpray@eatonresa.org  
www.eatonresa.org



# Direct Service Grantees 2015-2017

## Family Service & Children's Aid

Bob Powell  
517-787-7920  
bpowell@fsca-jackson.org  
www.strong-families.org

## Genesee Intermediate School District

Chandrika Payton  
810-591-4940  
cpayton@geneseeisd.org  
www.geneseeisd.org

## Great Lakes Center for Youth Development

Amy Quinn  
906-228-8919 ext. 121  
aquinn@glcyd.org  
www.glcyd.org

## His Love Family Resources

Ruth Ressler  
989-370-2403  
ruth@hislovemio.org  
www.hislovemio.org

## Huron County Health Department

Cindy Rochefort  
989-269-9721-130  
rochefort@hchd.us  
www.hchd.us

## Ingham County Health Department

Lisa Chambers  
517-272-4122  
lchambers@ingham.org  
www.hd.ingham.org

## Keweenaw Family Resource Center

Catherine Benda  
906-482-9363  
cbenda@kfrckids.org  
www.kfrckids.org

## LACASA

Polly Mollory  
517-548-1350  
pmollory@lacasacenter.org  
www.lacasacenter.org

## Lenawee Intermediate School District

Kyle Hoffman  
517-266-4832  
kyle.hoffman@lisd.us  
www.lisd.us

## Little River Band of Ottawa Indians

Jason Cross  
231-398-6736  
jcross@lrboi-nsn.gov  
www.lrboi-nsn.gov

## Michigan State University-Saginaw

Kylie Rymanowicz  
989-758-2503  
Rymanow1@anr.msu.edu  
www.msutoday.msu.edu/news/2015/msu-extension-to-offer-free-parent-and-family-education-classes/

## Monroe Intermediate School District

Kathryn Bourbina  
734-342-8460  
katie.bourbina@monroeisd.us  
www.monroeisd.us

## Motherly Intercession

Shirley Cochran  
810-282-1199  
shirleycochran11@gmail.com  
www.miforu.org

## Northern Michigan Mobile Child Advocacy Center

Bethany Law  
989-615-5002  
blaw@mikids.org  
www.mikids.org

## Oakland Family Services

Teri Dorta  
248-858-7766-219  
tdorta@ofsfamily.org  
www.oaklandfamilyservices.org

## Sanilac Intermediate School District

Karolyn McEntee  
810-648-2200  
kmcentee@sanilac.k12.mi.us  
www.sanilac.k12.mi.us

# Direct Service Grantees 2015-2017

## SOS Community Services

Rana Smith  
734-484-9944  
ranas@soscs.org  
www.soscs.org

## St. Clair RESA

Riley Alley  
810-455-4397  
alley.riley@sccresa.org  
www.sccresa.org

## Student Advocacy Center

Peri Stone-Palmquist  
734-482-0489  
pstone@studentadvocacycenter.org  
www.studentadvocacycenter.org

## United Christian Fellowship Ministries

Shawn Washington  
231-250-0075  
swashington\_2@hotmail.com

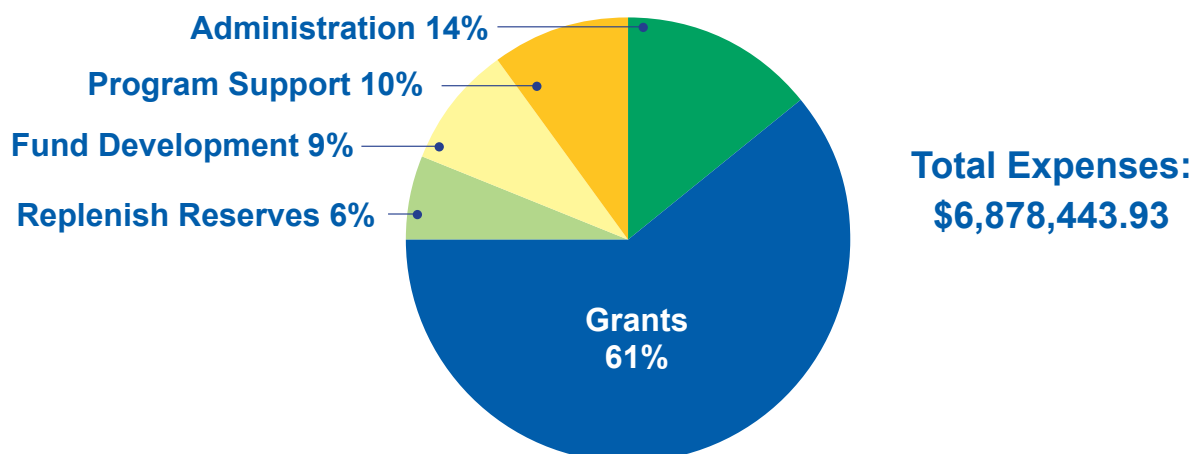
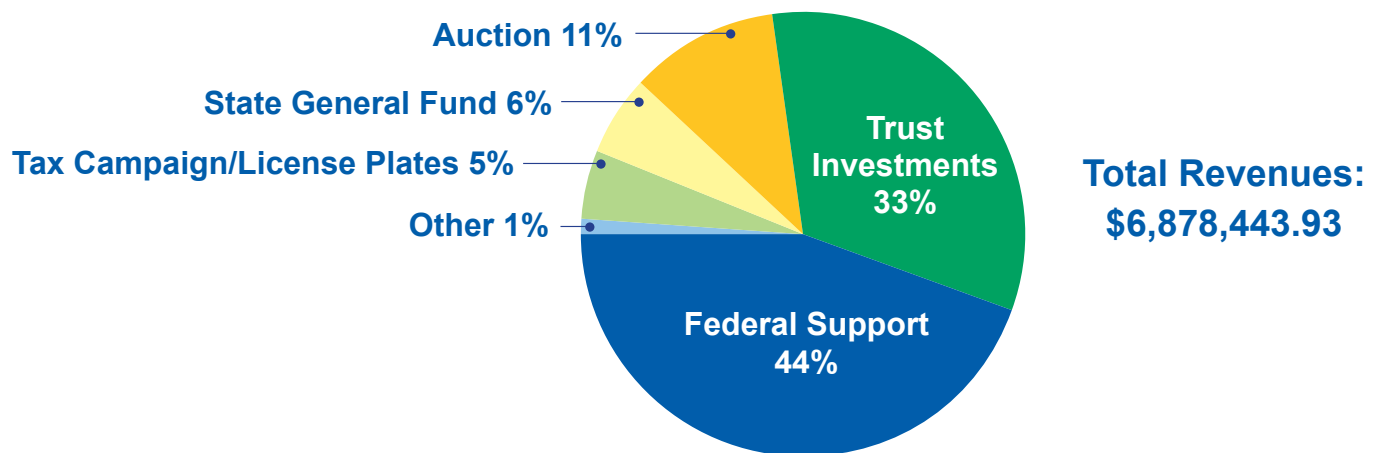
## Van Buren Intermediate School District

Lise Black  
269-657-7626  
liblack@vbisd.org  
www.vbisd.org

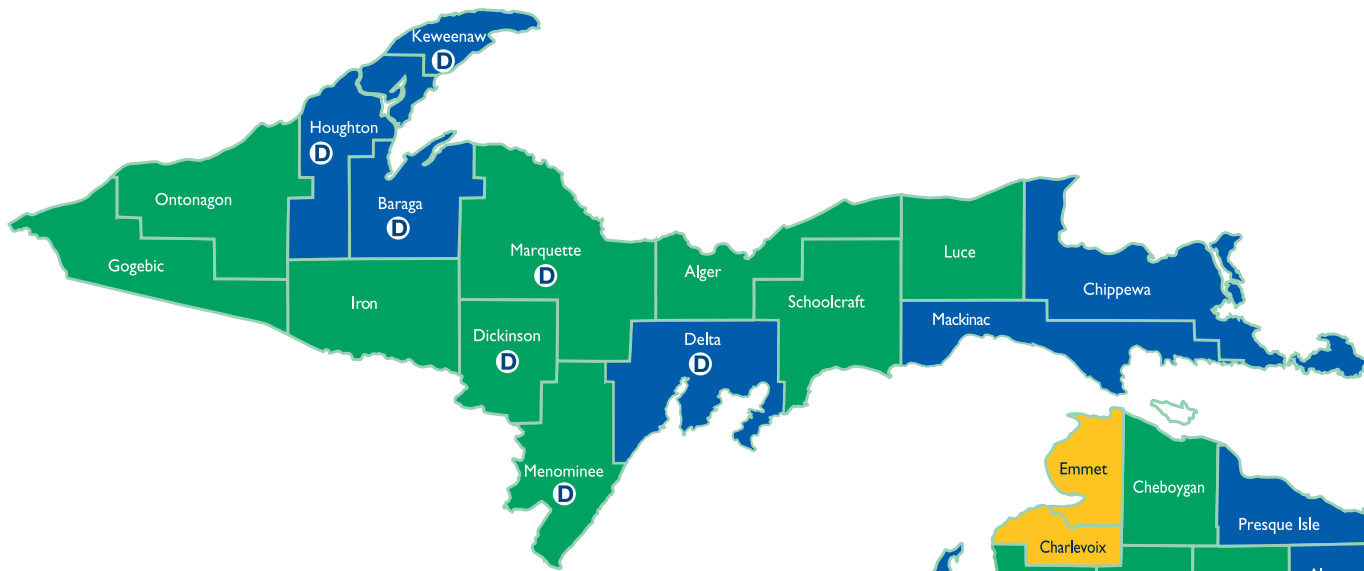
## West Midland Family Center

Susan Love  
989-832-3256  
loves@wmfc.org  
www.wmfc.org

## 2016 / 2017 CTF Revenues and Expenses

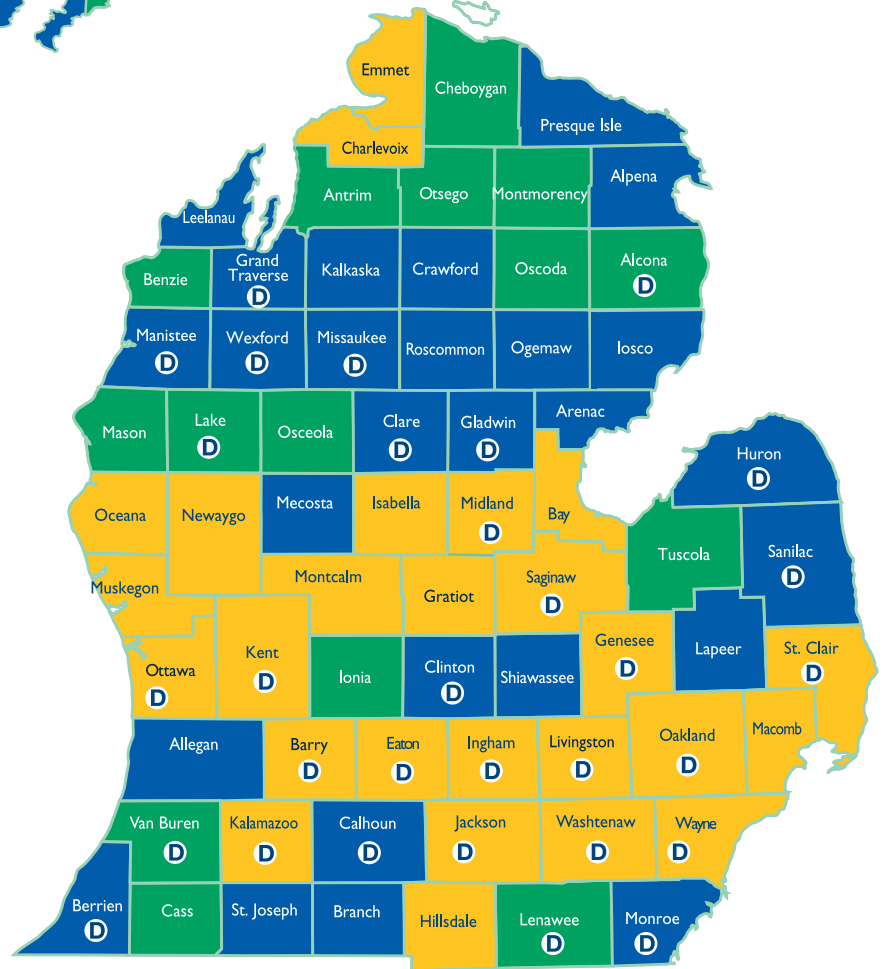


# Programs Funded 2015-2017



**MAP KEY**

- Local Council ≥ \$5,000
- Local Council ≥ \$10,000
- Local Council ≥ \$20,000
- D Direct Services Programs



**Cadence Miles,  
Age 11**



**Kaleigh Keyton,  
Age 9**

# Local Councils

## Overview

Local councils' primary purpose is the development and facilitation of a collaborative community prevention program within a specific geographic area. Local councils help assure that every county has a, "prevention presence." Local councils are encouraged to, and frequently engage and collaborate with, community partners and other local councils.

Local councils support children and families with strategies that build resilience; educate parents on child development; connect families to community resources; facilitate concrete supports when needed – and promote the socio-emotional health of children. These strategies are based on the protective factors (see page 5), which is a set of research-based concepts that help prevent child abuse and neglect. Local Councils also play a role in the process of awarding grants to Direct Service programs. *Read more at [www.michigan.gov/ctflocalcouncils](http://www.michigan.gov/ctflocalcouncils).*

## Local Council Programming

- Parenting (including infant safe sleep and infant head trauma prevention).
- Anti-bullying.
- Mandated reporter training sessions to the professional community.
- Car seat safety inspections.
- Information booth staffing.
- Baby pantry support.
- Newspaper articles.
- Public service announcements.

"Thank you so much for the Welcome Newborns Program. I am 40 years of age and had my first child. I didn't think I would benefit from the Welcome Newborns program, but it has been a lifesaver! My mom and I watched the "Period of PURPLE Crying" and "Happiest Baby on the Block" DVDs. Every new parent should see them. The Program has made me a better Mom!" – Anonymous

## 2018-2019 Plan

- Host a monthly local council workgroup meeting.
- Conduct regional meetings.
- Sponsor an annual training.
- Facilitate Child Abuse Prevention Month activities.
- Provide ongoing training and technical support.
- Educate and promote Safe Sleep practices.
- Provide training and technical assistance to local councils.
- Encourage local council collaboration.
- Michigan CTF will collaborate with state, federal and private entities to improve the capacity to deliver high quality prevention services.
- Michigan CTF will review programming and other data to advance local council continuous quality improvement endeavors.

# Local Councils

## Child Abuse Prevention (CAP) Month

Overview: April is recognized nationally as Child Abuse Prevention (CAP) Month and is annually celebrated across Michigan. CTF promotes CAP Month via state and local education and advocacy efforts.

- **Pinwheels for Prevention:** Pinwheels for Prevention™ is a nationwide campaign of Prevent Child Abuse America. CTF distributes pinwheels to Local Councils throughout the state to promote CAP Month. The pinwheel is used as a symbol of the happy and carefree childhood that all children deserve.
- **Resource Materials:** CTF produces and posts on its website a comprehensive CAP Month toolkit with information and resources providing Local Councils and other like-minded organizations the means by which they can initiate and achieve quality results for their CAP Month and other related campaigns.
- **Capital Rally:** CTF sponsors Child Abuse Prevention Awareness Day. The event includes a rally, procession and ceremonial planting of a pinwheel garden. A Legislative Education Day component to that special day enables participants to speak directly with their legislators about prevention issues and efforts.

## 2018-2019 CAP Month Plan

CTF will continue to provide statewide leadership for CAP Month initiatives to heighten awareness and educate about child abuse and neglect prevention, to include:

- 1) The Child Abuse Prevention Awareness Day rally event at the State Capitol in recognition of CAP Month, including a Legislative Education Day component.
- 2) The Pinwheels for Prevention™ campaign which includes providing pinwheels to local councils.
- 3) Updating and revising the CTF CAP Month toolkit.
- 4) A continued collaboration with MDHHS and the Governor's Office to secure the designation of April as Child Abuse Prevention Month. *Read more at [www.michigan.gov/preventchildabuse](http://www.michigan.gov/preventchildabuse).*



Brook Mudry,  
Age 10

# Local Councils

## **ALCONA**

Northeast Michigan Community Partnership, Inc.  
Tamara Quick, 989-724-5617  
quickfamily@wildblue.net

## **ALLEGAN**

Safe Harbor Children's Advocacy Center  
Lori Antkoviak, 269-673-3791  
lantkoviak@safeharborcac.org  
www.safeandsoundcac.org

## **ALPENA/PRESQUE ISLE**

Alpena/Presque Isle Child Abuse  
and Neglect Team  
Robin Benson, 989-356-8058  
rbenson@agh.org

## **ANTRIM**

Antrim County Child Abuse  
and Neglect Council

## **ARENAC**

Arenac County Child Protection Council  
Alison Fegan, 989-846-6541 x8112  
afegan@cmdhd.org

## **BARAGA/HOUGHTON/KEEWENAW**

Superior Child Abuse Prevention Council  
Rhys Edwards, 906-487-0914  
superiorcapcouncil@gmail.com  
superiorcapcouncil.wordpress.com

## **BARRY**

Family Support Center of Barry County  
Karen Jousma, 269-945-5439  
karen@familysupportbarry.com  
www.familysupportbarry.com

## **BAY**

Child Abuse and Neglect Council  
Great Lakes Bay Region, Bay County  
Suzanne Greenberg (Executive Director) or  
Vera Harrison (Education and Training Director),  
989-671-1345  
sgreenberg@cancouncil.org  
vharrison@cancouncil.org  
www.cancouncil.org

## **BENZIE**

Benzie County Child Abuse  
Prevention Council  
Kim Michum, 231-409-9534

## **BERRIEN**

Berrien Council for Children  
Jamie Rossow, 269-556-9640  
jrossow@berrienchild.org  
www.berrienchild.org

## **BRANCH**

Branch County Council for Child Abuse and  
Neglect  
Kim Willis, 517-227-5234  
willisk3@michigan.gov

## **CALHOUN**

Bronson Health Foundation  
Joyce Siegel, 269-245-3925  
SiegelJ@bronsonhg.org

## **CASS**

Cass County Youth Council  
Kristen Chism, 269-303-3642  
chismk@michigan.gov

## **CHARLEVOIX/EMMET**

Child Abuse Council of Charlevoix  
and Emmet Counties  
Maggie Kromm, 231-753-8511  
childabusecouncil@gmail.com  
www.upnorthchildabusecouncil.org

# Local Councils

## CHEBOYGAN

Cheboygan County Child Advocacy Council  
Debra Turnbull, 231-627-6015  
debrajturnbull@hotmail.com

## CHIPPEWA

Chippewa Council for Youth & Families  
Renee Johnson, 906-248-8310  
rjohnson@baymills.org

## CLARE

Clare County Youth Council  
Betsy Ulicki, 989-539-4229  
ulickib@michigan.gov

## CLINTON

Clinton County Council for the Prevention of Child Abuse and Neglect  
Marie Barks, 989-224-8845  
cancouncil19@gmail.com  
www.clintoncountycancouncil.weebly.com

## CRAWFORD/ROSCOMMON

Child Protection Council  
Tammy Tyler, 989-915-2752  
crcpc@mail.com

## DELTA

Community Foundation of the Upper Peninsula/  
Delta County  
Julie Moberg, 906-786-7080  
jmoberg@mdscaa.org  
www.cfup.org

## EATON

Eaton Child Abuse Prevention Council  
RESA/Prevention Program Services  
Kim Thalison, 517-541-8711  
kthalison@eatonrsa.org  
www.eatonrsa.org

## GENESEE

Weiss Child Advocacy Center  
for Children and Youth  
Claudnyse Holloman, 810-238-3333  
claudnyse@weissadvocacycenter.org  
www.weissadvocacycenter.org

## GLADWIN

Gladwin County Child Abuse and Neglect Council  
Julie Wright, 989-246-6291  
Julie.Wright@midmichigan.org

## GOGEBIC

Dove, Inc., Gogebic County  
Child Protection Council  
Jeanine Winkowski, 906-932-4990  
Jewink16@yahoo.com  
www.dove-inc.net

## GRAND TRAVERSE/KALKASKA/LEELANAU

Traverse Bay Children's Advocacy Center  
Sue Bolde, 231-929-4250  
sbolde@traversebaycac.org  
www.traversebaycac.org

## GRATIOT

Gratiot County Child Advocacy Association  
Audra Stahl, 989-463-1422  
audra@linkforfamilies.org  
www.linkforfamilies.org

## HILLSDALE

Child Abuse Prevention and Awareness  
Hillsdale County  
Christie Campbell, 517-437-3100  
capahillsdale@yahoo.com  
www.capahillsdale.net

## HURON

Huron County Child Abuse and Neglect Council  
Kelli Braun, 989-269-3485  
braunk@scheurer.org  
www.huroncountycancouncil.org

## INGHAM

Child and Family Charities  
Julie Thomasma, 517-882-4000 x123  
julie@childandfamily.org  
www.childandfamily.org

# Local Councils

## IONIA

Ionia County Council for Prevention of Child Abuse and Neglect  
Maria Nickell, 616-527-3351 x227  
loniacountyican@gmail.com

## IOSCO

Iosco County Child Protection Council  
Mary Kreft, 989-362-2835  
thekrefts95@aol.com

## IRON/DICKINSON

Children's Advocacy Network  
Kristina Demboski, 906-367-4866  
IronDickinsonCAN@aol.com

## ISABELLA

Isabella County Child Advocacy Center  
Kim Seidel, 989-317-8787  
kim@isabellacac.org  
www.isabellacac.org

## JACKSON

Council for the Prevention of Child Abuse and Neglect of Jackson County  
Travis Barnett, 517-788-4239  
tbarnett@cpcanjackson.org  
www.cpcanjackson.org

## KALAMAZOO

Kalamazoo County Child Abuse and Neglect Council  
Sarah Joshi, 269-552-4430  
info@kalamazoocan.com

## KENT

Family Futures  
Audra Holst, 616-454-4673  
aholst@familyfutures.net  
www.familyfutures.net

## LAKE

Lake County Council for Prevention of Child Abuse and Neglect  
Kim Loop, 231-745-4614  
kloop@co.lake.mi.us

## LAPEER

The Child Advocacy Center of Lapeer County/  
Council for Children  
Heather Frayer, 810-664-9990  
caclapeer@aol.com  
www.caclapeer.com

## LENAWEE

Lenawee County Child Abuse and Neglect Council  
Christie Cadmus, 517-265-1656  
Christie.cadmus@lenaweegreatstart.org

## LIVINGSTON

LACASA  
Holly Naylor, 517-548-1350 x293  
hnaylor@lacasacenter.org  
www.lacasacenter.org

## LUCE

Luce County Child Protection Council  
Tracy Paramski, 906-293-9223  
tparamski@hnjh.org

## MACKINAC

Mackinac County Child Protection Roundtable  
Denise Kingsbury, 906-430-5843  
roundtable\_mackinac@yahoo.com

## MACOMB

Macomb County Child Advocacy Center/  
Care House, Inc.  
Dorie Vazquez-Nolan, 586-463-0123  
doriev@mccarehouse.org  
www.mccarehouse.org

## MANISTEE

Manistee County Family Advocates  
Traci Smith, 231-398-2202  
mcfa@manistee.org

## MARQUETTE/ALGER

Alger Marquette Community Action Board  
Monet Chartier, 906-290-0290  
ChartierM1@michigan.gov  
www.amcabmqt.org



# Local Councils

## MASON

Communities Overcoming Violent Encounters,  
Mason  
Tracy Davis, 231-843-2541  
tdavis@callcove.com  
www.callcove.com

## MECOSTA

Mecosta County Children's Council  
Rebecca Szpiech, 231-527-1430  
szpiechr@nemcsa.org

## MENOMINEE

Menominee County Intermediate School District  
Mary Bauer, 906-863-5665 x1018  
mbauer@mc-isd.org  
mc-isd.org

## MIDLAND

Midland County Child Protection Council  
Michelle Waskevich, 989-835-9922  
waskevich@safeandsoundcac.org  
www.safeandsoundcac.org

## MONROE

Monroe County Child Advocacy Network  
Deborah Gambino, 734-790-7153  
cancouncilmonroe@gmail.com

## MONTCALM

We Care for Kids Council  
Mary Ellen Clery, 989-762-5229  
meclery2015@gmail.com  
www.wecare4kids.com

## MONTMORENCY/OSCODA

Child Protection Council  
Jacqie Ziolkowski, 989-858-0836  
jacqie64@outlook.com

## MUSKEGON

Child Abuse Council of Muskegon County  
Sabryna Benmark, 231-728-6410  
sbenmark@childabusecouncil.org  
www.childabusecouncil.org

## NEWAYGO

Newaygo County Council for the Prevention of  
Child Abuse and Neglect  
Denise Roesly, 231-689-5223  
ncpca.droesly@gmail.com  
newaygocountyprevention.org

## OAKLAND

CARE House of Oakland County/Child Abuse and  
Neglect Council of Oakland County  
Miriana Milo, 248-332-7173  
mmilo@carehouse.org  
www.carehouse.org

## OCEANA

Communities Overcoming Violent Encounters  
Tracy Davis, 231-843-2541  
tdavis@callcove.com  
www.callcove.com

## OGEMAW

Ogemaw County Child Protection Council  
Patricia Edwards, 989-701-6442  
pedwards263@gmail.com

## ONTONAGON

Ontonagon County Child Protection Council  
Paula Domitrovich, 906-884-4539  
pdomitrovich@ontonagoncounty.org

## OSCEOLA

Osceola Children's Council  
Rebecca Szpiech, 231-527-1430  
Meceola@mocckids.com  
www.mocckids.org

## OTSEGO

Otsego County Child Welfare Alliance Brandy  
McVannel, 989-390-5456  
occwa@yahoo.com

## OTTAWA

Pathways of Arbor Circle  
Leigh Moerdyke, 616-396-2301 x127  
lmoerdyke@pathwaysmi.org  
www.pathwaysmi.org

# Local Councils

## SAGINAW

Child Abuse and Neglect Council Great Lakes  
Bay Region  
Suzanne Greenberg (Executive Director) or  
Vera Harrison (Education and Training Director),  
989-671-1345  
sgreenberg@cancouncil.org  
vharrison@cancouncil.org  
www.cancouncil.org

## SANILAC

Sanilac County Child Abuse Prevention Council  
Jennifer Gezequel, 810-648-4098 x155  
lentnerj@sanilachealth.com

## SCHOOLCRAFT

Schoolcraft County Child Abuse  
and Neglect Council  
Joan Ecclesine, 906-341-6423 (work)  
906-341-6637 (home)  
jecclesine@mdsecp.org

## SHIAWASSEE

Child Advocacy Center of Shiawassee County  
Ellen Lynch, 989-723-5877  
ellen@cap-council.org  
www.cap-council.org

## ST. CLAIR

St. Clair County Child Abuse  
and Neglect Council, Inc.  
Lindsay Chopp, 810-966-9911  
edu@sccstopchildabuse.org  
www.sccstopchildabuse.org

## ST. JOSEPH

St. Joseph Council for Prevention  
of Child Abuse and Neglect  
Courtney Hyche, 269-858-7957  
courtcourt111686@gmail.com

## TUSCOLA

Tuscola County Health Department/Tuscola County Child  
Abuse and Neglect Prevention Council  
Kristi Suber, 989-673-8114 x144  
csuber@tchd.us  
www.tchd.us

## VAN BUREN

Van Buren Council for Prevention  
of Child Abuse and Neglect  
Becky Fatzinger, 269-427-6810  
rfatzinger@vbcmmh.com

## WASHTENAW

Washtenaw Area Council for Children  
Jyoti Gupta, 734-434-4215  
jyoti@washtenawchildren.org  
www.washtenawchildren.org

## WAYNE (OUT)

Child's Hope  
Cindy Swift, 313-583-6401  
childshope.swift@gmail.com  
www.childshope.org

## WAYNE

The Guidance Center/Kids TALK CAC  
Melanie Richards, 734-785-7705  
mrichards@iamtgc.net  
www.guidance-center.org/kids-talk

## WEXFORD/MISSAUKEE

Wexford-Missaukee Child Protection Council  
Karen Staub, 231-779-8445  
staubhome@charter.net

# State Plan for CTF Special Initiatives

## Period of Purple Crying

CTF is the statewide lead for the Period of PURPLE Crying in Michigan. In this leadership role, CTF will continue to strengthen the Michigan Coalition for the Period of PURPLE Crying. The Coalition will raise awareness about the prevention of infant head trauma or, as previously referred to as, shaken baby syndrome through education and training, and will encourage birth hospitals and social service agencies to offer PURPLE materials to parents of newborn infants. CTF and the coalition will provide training and technical support for hospitals interested in using the PURPLE model. Additionally, in 2018 and 2019, CTF will work in close partnership with the Injury and Violence Prevention Unit of the Michigan Department of Health and Human Services to coordinate the use of Period of PURPLE Crying resources throughout the state. Finally, CTF will expand the use of these resources through a special funded contract to strengthen our Local Council capacity on infant safety issues including abusive head trauma prevention.



## Citizen Review Panel

The United States Congress mandates that states receiving federal CAPTA funding develop and utilize a minimum of three Citizen Review Panels. Since 1999, CTF has assumed responsibility for coordinating Michigan's Citizen Review Panel (CRP) for Prevention. The CRP for Prevention includes representation from parents, private nonprofit organizations, and the Michigan Department of Health and Human Services. In 2018 and 2019, CTF will support the Prevention CRP in efforts to explore ways to introduce and integrate the protective factors framework into child welfare practice. The panel will identify other areas of focus early in its 2018 meetings.

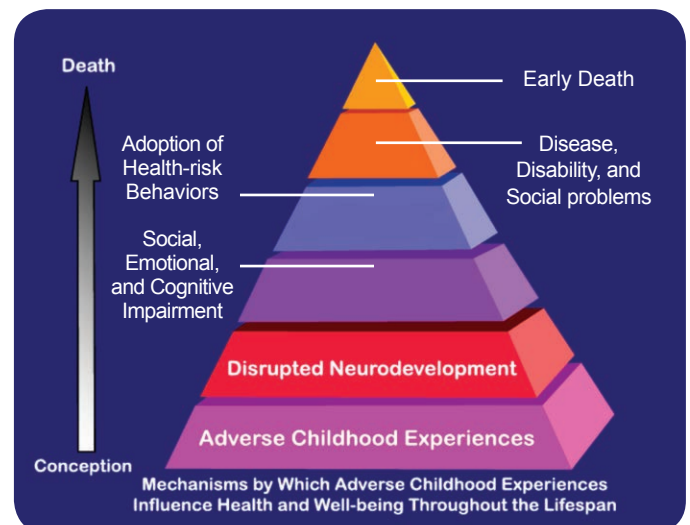
## The Power of Community



**Ending Child Abuse and Neglect.**

## Adverse Childhood Experiences

In 2018 and 2019, CTF will continue to provide support for building a statewide understanding of the Adverse Childhood Experiences (ACE) study. CTF is part of the leadership and advisory group for the statewide Michigan ACE Initiative. CTF will continue in that role to support the development of 'Master ACE Trainers' to support the use of ACE resources such as the "Paper Tiger" and "Resilience" movies, and be part of the education and advocacy efforts designed to address adverse childhood experiences with more holistic and collaborative strategies at both the state and local levels.



# State Plan for CTF Special Initiatives



## Parent Leadership

CTF participates in state government parent leadership initiatives including training for parents/caregivers as

well as professionals. Trainings are offered by the Parent Leadership in State Government Advisory Board, or directly from CTF with assistance and support from the educational arm (FRIENDS) of our federal grantor. The trainings offered include the Communities Leading Together, Parents Partnering for Change (PPC) leadership training or the Parent Leadership Ambassador Training (PLAT). The PLAT training pairs parents/caregivers with professionals to further advance and strengthen parent leadership endeavors within communities and/or organizations throughout the state. The CTF parent leadership plan for 2018 and 2019 is:

- Continue membership, participation and support to the Parent Leadership in State Government Advisory Board.
- Provide local councils and/or Direct Service grantees parent leadership training opportunities which may include: guest speakers at workgroup meetings; breakout sessions at the annual regional meeting; a topic discussed at regional meetings; PPC or PLAT trainings and others.
- Support state capacity building efforts beyond training opportunities, CTF will explore ways in which to support those who've already had training. This may include a post-training support group, and working with FRIENDS to explore best practices and implementing them in Michigan.

- Develop other meaningful strategies to assure parents' voices are heard regarding the programs and services affecting their lives.



## Strengthening Families/ Protective Factors

CTF began to serve as the state lead for Strengthening Families in FY2012, working in close partnership with the Early Childhood Investment Corporation. In particular, CTF worked to expand interagency conversations about Strengthening Families while continuing to identify ways to more comprehensively implement the protective factors within our programming. In 2018 and 2019, CTF will continue to support the use of the protective factors in serving Michigan's children and families with the following activities:

- Work with state level and local colleagues to explore ways to support and expand the initiative in Michigan.
- Distribute an annual Strengthening Families survey to local partners to help determine implementation and needs at the local level.
- Coordinate interagency discussions and planning for Strengthening Families including the following.
  - Provide presentations and workshops at state and local forums, and conferences.
  - Imbed the framework into the new Direct Service grant request for proposal.

# Fund Development

The Children's Trust Fund supports statewide child abuse and prevention services through a true public-private partnership. In addition to federal funding, the CTF cultivates private dollars by fostering private fund development, collaborating with community-based prevention organizations and pursuing grant opportunities. In addition, our prevention work is supported by individual and corporate donations, tax campaign donations, license plate purchases, charitable fundraising efforts and interest from the trust account.

## Heirloom Birth Certificate

The Pam Posthumus Heirloom Birth Certificate is intended to be a beautiful memento for anyone born in Michigan. While not an official birth record, the keepsake showcases the child's name, date and place of birth, and names of the parent(s). A portion of proceeds raised from the sale of the heirloom birth certificates helps to support CTF efforts.



## License Plate Campaign

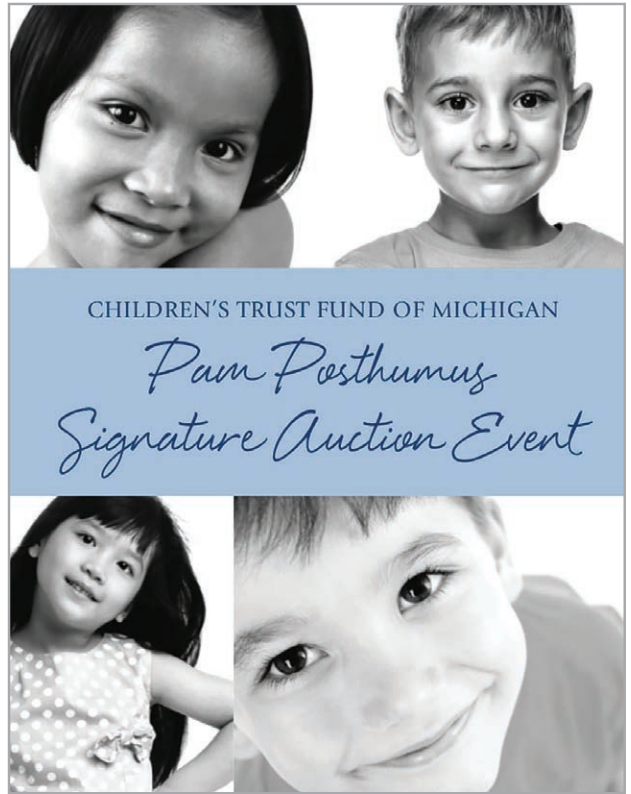
More than 10,000 citizens in our great state proudly display the CTF specialty license plate. The plate features the CTF logo and helps raise money for statewide programs. The specialty license plate can be ordered when renewing an automobile license plate through a Michigan Secretary of State branch office or online at [www.michigan.gov/sos](http://www.michigan.gov/sos). This specialty license plate can also be ordered at any dealership when purchasing a new vehicle. *Read more at [www.michigan.gov/ctflicenseplate](http://www.michigan.gov/ctflicenseplate).*



# Fund Development

## Pam Posthumus Signature Auction Event

The Pam Posthumus Signature Auction Event is held annually in May. The event features live and silent auction items, including premier trips around the world. The event continues to be an effective fundraiser to support the CTF's programs by building awareness of the CTF mission, and raising much-needed monies to carry out the important work of preventing child abuse. The legislative bi-partisan Auction Advisory Committee is co-chaired by Michigan senators, representatives and CTF Board chair. The event draws more than 700 guests, including state policymakers, lobbyists, corporate and business leaders and community members. *Read more at [www.michigan.gov/ctfauction](http://www.michigan.gov/ctfauction).*



Every child deserves our protection.

Prevent child abuse and neglect by donating to the Children's Trust Fund on your Michigan tax form.

## Tax Campaign

A major fundraiser for the CTF is the ability for individuals to contribute while filing their annual state income tax. Individuals can donate by noting their intention to contribute on line 22 of the MI-1040 tax form, and then designating the CTF as their charity of choice by completing tax form 4642. All contributions through the income tax campaign are transferred to CTF to support prevention efforts throughout Michigan. *Read more at [www.michigan.gov/ctftaxcampaign](http://www.michigan.gov/ctftaxcampaign).*

# Donor History 2016-2017

\$100,000 AND OVER



\$50,000 - \$99,999



**DTE Energy**  
**Foundation**



\$20,000 - \$49,999



**DELTA**

**meijer**



# Donor History 2016-2017

\$10,000 - \$19,999



**BYRUM & FISK**  
ADVOCACY COMMUNICATIONS





# Donor History 2016-2017

## **\$5,000 - \$9,999**

Blue Cross Blue Shield of Michigan  
Deloitte, LLP

DePadua Construction, LLC  
Dome Magazine

Gamma Omicron Chapter of Kappa Delta  
Karoub Associates  
MAXIMUS

Michigan Credit Union League  
Michigan's Big Show Starring  
Michael Patrick Shiels  
Unisys Corporation

## **\$2,500 - \$4,999**

Autocam Medical  
Consumers Energy

Dakota Integrated Systems  
Dan Pfeiffer Lincoln  
Development Finance Group  
Dewpoint

The Honorable John Engler &  
Michelle Engler

Harbor Health Plan  
Renze & Kristin Hoeksema  
Klein Brothers, LLC  
Lake Trust Credit Union

Lighthouse Foods & Wendell Christoff

Loomis, Ewert, Parsley, Davis & Gotting, P.C.

Michigan Association of Health Plans

Michigan Council for Maternal & Child Health

Michigan Farm Bureau of Companies

Michigan State Housing Development Authority  
Jim & Ann Nicholson

Operating Engineers 324 LMEC

Dick & BethAnn Posthumus

Public Affairs Associates

Public Sector Consultants

SEMCO Energy

Sterling Corporation/

Lambert Edwards & Associates

StrategyWorks

Ambassador Ronald Weiser & Eileen Weiser  
WLNS TV-6

## **\$1,000 - \$2,499**

Advance America  
Advocate Solutions  
AF Group

Alpha Alpha Chapter of Kappa Delta  
Auto-Owners Insurance Company

Delois Whitaker Caldwell  
Ciber, Inc.

Clark Hill, PLC

Comerica Bank

Consumers Energy - Jackson  
Justice Maura Corrigan

Cottage Inn Pizza - Jackson  
Dickinson Wright PLLC

Eastbrook Homes  
EDU Staff

Michael Foley & Ann Routt  
Fraser Trebilcock Davis & Dunlap

Grand Traverse Pie Company  
Huizenga, J. C. and Tammy

Johnson & Johnson  
Kenwal Steel

Lochbridge

Lockwood Companies

Love Funding

The Honorable Lisa Posthumus Lyons  
Mark McDaniel

Michigan Dental Association

Michigan Department of Environmental Quality  
Michigan Department of

Health and Human Services

Michigan Department of

Talent and Economic Development

Michigan Manufacturers Association

Michigan Podiatric Medical Association

Michigan Propane Gas Association

# Donor History 2016-2017

Midwest Strategy Group, LLC  
Miller, Canfield, Paddock & Stone, PLC  
MiSDU/Informatix Inc.  
MRI Software (Integratec)  
MSU Federal Credit Union  
Oakland University  
David & Lindsay Palsrok  
The Peter F. Secchia Family  
Quantam Solutions  
Quicken Loans  
The Honorable Bill Schuette & Cynthia Schuette  
The Honorable Richard Snyder  
The Steve & Amy Van Andel Foundation

## \$500 - \$999

The Honorable James Blanchard &  
Janet Blanchard  
Capitol Services, Inc.  
Children's Hospital of Michigan  
Robert Chioini  
Detroit Metro Convention & Visitors Bureau  
John & Linda Dietrich  
HERCO Trading Places &  
Solutions Group Learning Centers  
HTC Global Services, Inc.  
Insight  
Kandler Reed Khoury & Muchmore  
Lansing Area Exchange Club  
Lansing Board of Water and Light  
Rann Paynter  
Michigan Department of Education  
Michigan Primary Care Association  
David Nicholson  
D. A. Oshinsky  
RWC Advocacy  
Sigma Delta Tau Chi  
The Dirty Helens  
Donald Trap  
Truscott Rossman Group, LLC  
Brian Whiston  
Van Staten & Associates

## \$499 and under

Absopure Water  
Richard & Gloria Adelsbach  
Kara Anderson  
Ronald & Stephanie Arambula  
Ascension Health  
Balloons Galore  
Gabe Basso  
Dominic J. Bausano  
Chrissy Beckwith  
Phillip & Emily Bergquist  
Louis Bertani  
David & Patricia Brogan  
Brogan, Reed, Van Gorder & Associates  
Freddie & Jeannette Burton  
Joe & Gloria Caruso  
Matthew Cerutti  
Chesapeake Community Advisors, Inc.  
Richard & Deborah Cole  
Lewis & Judith Cooper  
Cottage Inn Pizza  
Julie Creemers  
Kenneth & Christine Cymbalski  
Christine D'Angela  
Mark Davidoff & Marjorie Dunn  
Sarah Davis  
Keith den Hollander  
Sandip Desai  
DFM Solutions  
Chuck & Joan Dietrich  
Mark Erickson  
John & Cindy Evans  
Kay Felt  
Mike & Anna Flanagan  
Emma Foley  
Ken Foster  
Ronald & Darlynn Frederick  
Joseph Fresard  
David Frey  
Erin Frisch  
Sean & Dawn Gehle

# Donor History 2016-2017

Donald Gilmer & Lynn Weimeister  
George Guerrieri  
Beverly Hammerstron  
Clark Harder  
Angela Hart  
Jeffery Hartgen  
James Haveman  
Patricia Headley  
Howard & Judith Hedlund  
Teresa Henry  
The Honorable Curtis Hertel, Jr.  
Vickie Hertel  
Steven & Catherine Hilfinger  
Richard & Nancy Hope  
Mahlon & Patricia Horwitz  
Donald Huesgen  
ICHANGE Youth Program  
Marshall & Elaine Isaacs  
William Jackson  
Dave Jakovac  
Lorann Jesuale  
Richard & Suzanne Johnson  
Journey Federal Credit Union  
Joseph Kaiser  
Ronald & Ruth Kanaski  
Kevin Korpi  
James Kosteva  
David Ladd  
Lansing Community College  
Lansing Fire Fighters Association  
Michael & Deborah Lashbrook  
Geraldyn Lasher  
Catherine Liesman  
Ronald Lott  
Mary Ludtke  
Anna Luke  
Adam & Danielle Lupcke  
Mike Malane  
Carol Mason

Kathy McCord  
Christina Medina  
Richard Meese  
Mary Meier  
Patrick Meyers  
Michigan Association of Nurses Anesthetists  
Michigan Department of Health and  
Human Services, Washtenaw County  
Susan Miller & Allen Batteau  
Deb Mosher  
Patrick & Katherine Mullen  
Kevin Murphy  
Jim Murray  
Holly Nester  
Janet Olszewski  
Kyle O'Neill  
Mary Jane O'Neill  
Steven Ostrow  
Denise Pearl  
Sharon Peters  
Carol Posthumus  
Peter Pratt  
Public Policy Associates, Inc.  
Linda Pung  
Phillip & Jennifer Quack  
Jane Quenneville  
Riddle Me That!  
Lewis Roubal  
Royal Oak Woman's Club  
The Honorable Terry Sabo  
Vivek & Amy Sankaran  
Fred & Janine Scensny  
William & Theresa Lynn Schuster  
Francine Shammami  
Shiv Singh  
Kerry Ebersole Singh  
Anthony Soave  
Kathleen Stiffler  
Karen Stock

# Donor History 2016-2017

Trevor Taylor  
Elizabeth Thomas  
Stacie Thomas  
John Thompson  
Timothy Turner  
Kathryn Upton  
Karlis & Anda Vizulis  
Kellie Wasielewski  
Michelle L. Weinfeld  
Sheryl Welsh

Stephen Werth  
Regan & Janet West  
Howard Weyers  
Jim Wheaton  
Charles Wilbur  
Steve & Dawn Yager  
William & Amy Zaagman  
Katie Zeiter

*Each of these special people have been remembered with a memorial or honorarium made in their name.*

## In Memory

William Dietrich  
The Honorable Curtis Hertel, Sr.  
Ruth Anne Kade  
Patricia Joanne Oshinsky  
Pam Posthumus

## In Honor

Willa & Nathan Anderson  
Bruce Gerhart  
Myranda Grim  
Matthew & Rachel Hertel  
Kim Kerns  
Mark McDaniel  
Katie Packer  
Fred Shell  
Steve Yager

*This State Plan features artwork created at the 2017 MDHHS*

*Take Your Child to Work Day. CTF gratefully acknowledges the contributions of these young, talented artists.*



**Caleb Vincent,  
Age 8**

# Auction Item Donor History 2016-2017

All Body Kneads	Detroit Marriott Renaissance Center
A2 Mastermind	Detroit Public Theatre
Aloft at the David Whitney	Detroit Symphony Orchestra
Amtrak	Doggy Daycare & Spa
Amway Grand Plaza Hotel	Douglas J Salon and Spa
The Honorable Jim Ananich	Drago Enterprises
Arcadia Brewing Company	The Honorable Gretchen Driskell
ArtPrize	DTE Energy
Atwater Brewery	Dusty's Cellar
Azenphony Press Writing and Editing Services	Eastern Michigan University
Balleto Vineyards	Eastwood Towne Center
Bavarian Inn	Rob Elhenicky
Janna Beckwith	Lena Epstein
Big Boy Restaurants International, LLC	Faulkwood Shores Golf Club
Blue Cross Blue Shield of Michigan	FCA US LLC
Candlewood Suites	Ferris State University
Capital City Sports Auctions	Firefly Farm
Capital Genealogy	Firefly Hot Yoga Bar
Chamberlain's Auction Gallery	Firekeepers Casino Hotel
Chemung Golf and Banquet Center	Flex City Fitness
Clark Hill, PLC	Flint Institute of Arts
The Honorable Hugh Clarke, Jr. & Judi Clarke	Ford Motor Company
College Fields	Four Winds Casino Resort
Comedy Central	Holly Franck
Common Ground Music Festival	Genie-ology
Cortney Tostevin Photography	Gilbert & Blakes
Country Club of Lansing	Goldfish Swim School
Crawford/Roscommon Child Protection Council	Governmental Consultant Services, Inc. (GCSI)
Dean Trailways	Grace Boutique of Old Town
DeAngelis Cantina del Vino Winery	Grand Haven Golf Club
Deloitte LLP	Grand Hotel
Detroit Lions Inc.	Hankerd Hills Golf Course

# Auction Item Donor History 2016-2017

Matthew X. Hauser  
Haworth  
The Honorable Ken Horn  
Ilitch Holdings  
Impression 5 Science Center  
Insane Inflatable 5K Race  
International Union, UAW  
Irene's Myomassology Institute  
ITC Holdings Corporation  
Jackson National Life Insurance Company  
JD Scott Photography  
Johnson & Johnson  
Juice Nation  
Kelley Cawthorne  
Kellogg Hotel & Conference Center  
The Honorable Tim Kelly  
Angie Kirsch  
The Honorable Marty Knollenberg  
Kevin Korpi  
Ned Krouse  
LaFargeHolcim  
Lake Lansing Family Practice Med Spa  
Lansing Symphony Orchestra  
The Honorable Tom Leonard  
Stephen Loftus  
Love Botswana Outreach Mission  
Jim Lutfy, Remy Lutfy, and Vertical Detroit  
M & MS Farms  
Mackinac Bridge Authority  
Mackinac Island Carriage Tours  
Magnum Hospitality  
Marketing Resource Group

Rob McBeiook  
The Honorable Mike McCreedy  
Melisa McKinley/Kelley Cawthorne  
Penni McNamara  
Meadow Brook Hall  
Medawar Jewelers  
The Honorable Arlan Meekhof  
Michael & Angela Meyers  
MGM Resorts International/MGM Grand Detroit  
Michigan Beer & Wine Wholesalers Association  
Michigan Department of Corrections  
Michigan Department of Natural Resources  
Michigan Economic Development Corporation  
Michigan Film & Digital Media Office  
Michigan House Democrat Caucus  
Michigan House Republican Caucus  
Michigan Infrastructure &  
Transportation Association  
Michigan Legislative Consultants  
Michigan Princess Riverboats  
Michigan Railroads Association  
Michigan Science Center  
Michigan Senate Democrat Caucus  
Michigan Senate Republican Caucus  
Michigan State Police  
Michigan State University  
Michigan Technological University  
MiSDU/Informatix Inc.  
MotorCity Casino Hotel  
Muchmore Harrington Smalley & Associates  
NCG Eastwood Cinemas  
James B. Nicholson

# Auction Item Donor History 2016-2017

Northern Michigan University  
October Moon  
Old Town General Store  
Otsego Club & Resort  
Painting with a Twist  
David & Lindsay Palsrok  
Paramount Pictures  
Parks & Recreation Division  
Payable Guide Service LLC  
Peacock Road Family Farm  
Peppermint Creek Theatre  
Perk Pros LLC  
PK Contracting  
Playmakers  
Potter Park Zoo  
Preuss Pets  
Prues Hecker LLC  
Quicken Loans  
Lauren Rakolta  
Rebecca Houlihan Photography  
The Honorable Randy Richardville  
Andrew Richner  
Brendan Ringlever  
Janet Robertson & Julius Giglio  
Royal Park Hotel  
S & L Coins  
Saginaw Valley State University  
Jeff Sakwa  
Saper Galleries  
Sea Glass Fine Art Photography  
Mary Shinkle

Shrewsbury Photography  
The Honorable Sam Singh  
Southwestern Consulting  
Star Line Mackinac Island Ferry  
Richard Stokes  
Studio C! / Celebration! Cinema  
Evelyn Zois Sweeney  
Sweet Lorraine's  
TEAM Schostak Family Restaurants  
The English Inn  
The Majestic at Lake Walden  
The Whiting  
The Windquest Group  
Timber Trace Golf Club  
Tullymore  
University of Michigan  
University of Michigan - Dearborn  
Dennis Van Dam  
VisionCare Associates, PC  
Warner Brothers Entertainment  
Lynn Weimeister  
Wessen Lawn Tennis Club  
Western Michigan University  
Westside Fitness  
Wharton Center for Performing Arts  
Whirlpool  
Whispering Pines  
Willow Creek Golf Club  
Bill & Lori Wortz  
Zap Zone  
Zingerman's

# Children's Advocate Award Recipients

The Children's Trust Fund Children's Advocate Award began in 2012. The award is presented annually at the Pam Posthumus Signature Auction Event. Awardees are Michigan citizens who are passionate voices for programs, services and policies that support the prevention of child abuse and neglect. The Michigan Children's Trust Fund is proud to have honored the following Children's Advocate Award recipients in 2016 and 2017.

## Mark McDaniel 2016 Award Recipient

Mark McDaniel was the 2016 recipient of the Children's Trust Fund's Children's Advocate Award. As a six-year member of the CTF board, McDaniel was a tireless champion for children's issues. He advocated for and provided the seed funding to assess the impact of adverse childhood experiences on adult health and the well-being of Michigan's citizenry. Mark has a clear and strong voice, from the business community perspective on how the Trust Fund's work is linked to successful kids in school and ultimately to productive and engaged adults. Under Mark's leadership since 2004, Cinnaire has contributed over \$450,000 in support of the CTF's efforts to strengthen families and to keep children safe.



## Steve Yager 2017 Award Recipient

Steve Yager is the former Director of the Michigan Department of Health and Human Services (MDHHS) Children's Services Agency. Steve was a hardworking, knowledgeable and dedicated director. Under Steve's leadership, the value of the Children's Trust Fund (CTF) prevention mission was strengthened making the CTF a critical piece in the full continuum of children's services. It was through both Steve's creative problem solving and leadership that the CTF is now able to leverage new funding to support our prevention mission. His efforts were instrumental in establishing CTF as a model public-private partnership that creatively blends sources of support to expand prevention efforts throughout Michigan.



Cameron Quealy,  
Age 7



Payton Parks,  
Age 9



# Children's Advocate Award Artists

**Artists** *The Children's Advocate Award is a unique, original Michigan-made artwork aimed at capturing the special essence, wonder and promise of childhood. A local Michigan artist is annually selected for their skill and expertise. CTF is honored to have worked with the following artists and grateful for their contributions to the Children's Trust Fund.*

## Ned Krouse "Butterfly Vase"

The 2016 Children's Advocate Award was an original by Haslett artist Ned Krouse, educator, potter and ceramicist. Ned taught at art and craft centers, colleges and



universities around the country including the Greater Lansing Potters Guild. A specialist in raku pottery, Ned's creation, Butterfly Vase, reflects the whimsy, wonder and playfulness of childhood.

## April Wagner "Pinwheel"

The 2017 Children's Advocate Award was an original by Michigan artist April Wagner. It was apparent since early childhood that April was a natural artist. She draws inspiration



for her craft from her other passions including landscaping and gardening. A master of blown glass for over 20 years, April's creation of the **Pinwheel** was inspired by Prevent Child Abuse America's national symbol, the pinwheel, representing the opportunity for all children to reach their full potential by experiencing a playful, joyful, rewarding, safe childhood.



**Ella Pelowski,**  
Age 8



**Gage Stam,**  
Age 8

# CTF Board of Directors



**Randy Richardville**

Board Chair,  
Representing  
*Business Community*



**Krista Beach**

*Representing  
General Public*



**Sean Bertolino**

*Representing  
Parents*



**Lynette Biery**

*Representing Michigan  
Department of Health  
and Human Services*



**Willie Dubas**

*Representing  
Labor*



**Dr. Roxanna  
Duntley-Matos**

*Representing  
General Public*



**Lena Epstein**

*Representing  
General Public*



**Stanley Hannah**

*Representing  
Business Community*



**Bill Hardiman**

*Representing Michigan  
Department of Health  
and Human Services*

# CTF Board of Directors



**Karl leuter**  
*Representing  
General Public*



**Lauren Rakolta**  
*Representing  
Business Community*



**Alisande Shrewsbury**  
*Representing  
Michigan Department  
of Education*



**Sgt. Kim Vetter**  
*Representing  
Michigan State Police*

Per Public Act 250 of 1982, the Children's Trust Fund is composed of 15 board members. Eleven public members are appointed by the governor with the advice and consent of the Senate and four state departments designate representatives to the Board.

- : CTF recognizes the following
- : past board members who
- : served with distinction and
- : completed their term during
- : 2016-2017: John Brown,
- : Sgt. Keith Disselkoen,
- : Shelly Kester, Mark
- : McDaniel, Andra Rush,
- : Vivek Sankaran, Deb
- : Shaughnessy, Rashmi
- : Travis, Lorinda Wortz.

---

## Children's Trust Fund Staff



*Left to Right:*

**Anne Stokes,**

*Community Awareness Coordinator*

**Michael Foley, MSW,** *Executive Director*

**Emily Schuster-Wachsberger, MA, LPC,**  
*Local Council Coordinator*

**Scott Addison, BA,** *Grant Coordinator*

**Taylor Williams, BA,** *Office Support*

**Alan Stokes, MBA, MDiv.,** *Research Analyst*

**Patricia Headley, BS,**

*Fund Development Coordinator*



# Children's Trust Fund

Protecting Michigan's Children

PO Box 30037 • Lansing, MI 48909-7537  
235 S. Grand Ave., Suite 1411 • Lansing, MI 48933  
800-CHILDREN • 517-373-4320  
517-241-7038 (Fax) • [www.michigan.gov/ctf](http://www.michigan.gov/ctf)



[www.facebook.com/MichiganCTF](http://www.facebook.com/MichiganCTF)



[twitter.com/CTF\\_Michigan](https://twitter.com/CTF_Michigan)



[www.youtube.com/MichiganCTF](http://www.youtube.com/MichiganCTF)



The Michigan Department of Health and Human Services (MDHHS) does not discriminate against any individual or group because of race, religion, age, national origin, color, height, weight, marital status, genetic information, sex, sexual orientation, gender identity or expression, political beliefs or disability.