

Spring 2023



# Michigan Department of Health and Human Services Newborn Screening News

The Michigan Department of Health and Human Services (MDHHS) Newborn Screening (NBS) Follow-up Program works together with the State Newborn Screening Laboratory and coordinating centers to find and treat infants who need early medical care.



## NBS Quarterly Reports and Stellar Performance



During the fourth quarter of 2022, two hospitals met all six of the NBS blood spot screening performance goals. We would like to congratulate the following hospitals on their impressive efforts:

- Munson Healthcare Charlevoix
- Spectrum Health United Hospital

### Performance Goals for NBS Blood Spot Quarterly Reports

1. Less than 2 percent of screens are collected more than 36 hours after birth.
2. Greater than 90 percent of screens arrive in the state laboratory by the appropriate day.
3. Less than 1 percent of screens are unsatisfactory.
4. Greater than 95 percent of electronic birth certificates have the NBS card number recorded.
5. Greater than 90 percent of specimens have a returned BioTrust for Health consent form that is completed appropriately.
6. Greater than 90 percent of newborns with a dried blood spot have pulse oximetry screening results reported.

We hope you can use this information in the quarterly reports to improve your part of the NBS system. If you have any questions, please call the NBS Follow-up Program at 517-335-4181.

### In this newsletter:

- ✓ NBS conference registration.
- ✓ Black ink only.
- ✓ Correction fluid errors.
- ✓ Avoiding layered specimens tip.
- ✓ BioTrust best practices resource.
- ✓ Hospital guides.
- ✓ In-person event opportunities.
- ✓ Upcoming holiday schedule.

During the fourth quarter of 2022, 34 hospitals met all three of the critical congenital heart disease (CCHD) screening performance goals.

Two hospitals had 100 percent of CCHD results reported on time. Congratulations to the following hospitals on their impressive efforts:

- MyMichigan Medical Center Alma
- OSF St. Francis Hospital

One hospital had 100 percent of CCHD results completed between 20 and 28 hours of life. Congratulations!

- Corewell Health Gerber Hospital

### Performance Goals for CCHD Quarterly Reports

1. At least 90% of newborns with a blood spot screen have pulse oximetry screen results reported.
2. At least 90% of newborns with a blood spot screen have pulse oximetry screen results reported to the state less than 10 days after screen date.
3. At least 90% of newborns with a blood spot screen have pulse oximetry screen completed between 20 and 28 hours after birth.



NBS Follow-up Program Contact Information

Phone: 517-335-4181

Email: [NewbornScreening@Michigan.gov](mailto:NewbornScreening@Michigan.gov)



### 2023 Newborn Screening Conference registration

Have you registered for the 2023 Michigan Newborn Screening Virtual Conference? If not, there is still time!

Topics include:

- Cystic fibrosis.
- Using performance metrics for quality improvement.
- Communication strategies for reluctant parents.
- Data reporting for pulse oximetry screening.
- BioTrust updates.

### 2023 Virtual MDHHS Newborn Screening Conferences



MICHIGAN  
Newborn  
Screening

**May 3**  
**May 31**

9:00 a.m. - 2:30 p.m.

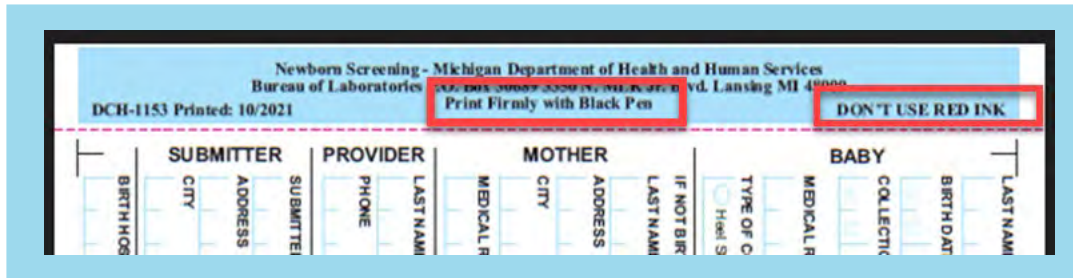
Register today!



This free conference is highly recommended for hospital staff involved in NBS. Nursing contact hours are available. To register, please visit <https://www.surveymonkey.com/r/2023NBSconference>.

### Reminder: Black ink only

The newborn screening card must be completed using black ink. There has been an increase in cards submitted with fields written in red ink. When scanned into the laboratory information management system, red ink is very difficult to read. Please remind your team to only use black ink!



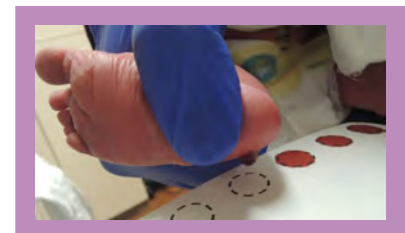
### Card errors and correction fluid

Wite-Out or other forms of correction fluid/tape should not be used on a newborn screening card. Instead, place a single strikeout line on incorrect information and clearly write the correct information above it. Initial next to the correction and make a notation in the notes field attesting that the corrections are accurate. If multiple errors occur, start over on a new card and submit the original card for reimbursement. The use of correction fluid will result in a "Cannot Identify (CID)" unsatisfactory specimen and a repeat specimen will be required.



### Common error leads to layered specimen

Layered blood spots are the most common cause of unsatisfactory newborn screening specimens in Michigan. Once cards arrive at the Newborn Screening Laboratory, they are assessed for specimen quality. Lab staff have reported an increase in samples that have blood placed on both sides of the filter paper. As a reminder, blood cannot be applied to both sides of the filter paper as this will cause layering, and a repeat specimen will be required.



For more tips about avoiding unsatisfactory specimens, please visit our website at [Michigan.gov/NewbornScreening](https://Michigan.gov/NewbornScreening) and click on the "Resources for Hospitals and Health Professionals section." [Click here for a direct link.](#)

### NBS emergency weather plan and courier issues

Michigan Newborn Screening has a new email address for communicating courier updates, such as upcoming holidays or emergency weather plan updates. The email address is [MDHHS-NBScourier@Michigan.gov](mailto:MDHHS-NBScourier@Michigan.gov). If your hospital will be affected by a weather emergency event, you can expect to receive communication from this address.

If you have had recent staffing changes, please ensure that we have the appropriate email addresses to alert for courier-related updates. If your hospital has a group email box set up that is utilized for NBS, please send your hospital name, group email address and names of the individuals who have access to the email. As weather events may require last minute alerts, it is important to have more than one contact per hospital. Please feel free to reach out to the new email address if you have any questions, concerns or feedback for your STAT courier driver.

### BioTrust consent best practices sheet now available

A new resource is available for hospitals titled “BioTrust Consent Best Practices for Michigan Hospitals.” The goal of this document is to provide hospitals with tips and suggestions related to the BioTrust consent process that have been successful in Michigan birthing hospitals.

To create this document, we sought feedback from hospital partners that consistently satisfy the BioTrust metric on quarterly reports or that have made significant improvements over time. Suggestions include:

- Incorporating the newborn screening online training module into routine staff training requirements. This training module includes information on administering the BioTrust consent process and offers continued education credits.
- When possible, offer newborn screening and BioTrust brochures during the prenatal period.
- Share progress on the BioTrust metric with staff quarterly to encourage group collaboration.
- And more!

This resource can be found on our website at [Michigan.gov/NewbornScreening](http://Michigan.gov/NewbornScreening) and click on the “Resources for Hospitals and Health Professionals section.” [Click here for a direct link.](#)

### BioTrust Consent Best Practices for Hospitals

Hospitals play a critical role in the BioTrust consent process, which allows parents to decide whether or not their child's left over blood spots from newborn screening can be used in medical and public health research studies. Hospital staff should provide the BioTrust consent brochure titled After Newborn Screening, Your Baby's Blood Spots to parents around the time that blood spots are collected for newborn screening and ask that they complete the BioTrust consent form that is attached to the back of the newborn screening collection card.

MDHHS has as a goal for each hospital in Michigan to receive a completed BioTrust consent form with 40% of all newborn screens collected. A form is considered complete if a decision has been made, either “Yes” or “No”, and it is signed by a parent or legal guardian. The goal of this document is to share tips and suggestions related to the BioTrust consent process that have been successful in Michigan birthing hospitals.

**When possible, provide BioTrust education prenatally**

There are newborn screening and BioTrust brochures designed for the prenatal period that are available in multiple languages, free of charge, at [www.Michigan.gov/NBSCOrder](http://www.Michigan.gov/NBSCOrder).

**Log BioTrust Consent Completion**

Incorporate an area, whether an NBS log or in electronic medical records, to check off when parents complete the BioTrust consent form.

**Identify staff champions**

Find a few staff members on each shift who can provide support to newer staff related to the BioTrust consent process.

**Get familiar with the BioTrust website**

The BioTrust website, located at [www.Michigan.gov/bioTrust](http://www.Michigan.gov/bioTrust), houses resources for health professionals and parents that can assist with the BioTrust consent process. Learn more below about what is available.

**Resources for parents:**

- Prenatal NBS brochures describing the BioTrust
- Answers to frequently asked questions
- Audio recording of the BioTrust brochure
- Online research option listing all available using left over blood spots from Michigan

**Resources for health professionals:**

- 30-minute online staff training module
- Michigan Screening Guide for Hospitals
- BioTrust information starts on page 10
- BioTrust consent staff instruction sheet
- Answers to frequently asked questions

**Encourage participation in BioTrust training opportunities**

A 30-minute online BioTrust consent training module is available for anyone who is involved in the BioTrust consent process. Live training sessions are hosted by the newborn screening program once per calendar year and include presentations about the BioTrust consent process.

**Make data sharing routine**

Data regarding BioTrust consent completion rates is sent to NBS coordinators at each hospital quarterly. Share this information with all staff included in the BioTrust consent process to encourage group participation.

### Reminder: Hospital guides

Are you looking for more information about NBS or CCHD pulse oximetry screening? For easy access, don't forget to add the Michigan Newborn Screening Guide for Hospitals and the CCHD Screening Guide for Hospitals to your favorites menu on your browser! The Michigan Newborn Screening Guide is updated quarterly and can be found at [Michigan.gov/NewbornScreening](http://Michigan.gov/NewbornScreening). [Click here for a direct link.](#) The CCHD Screening Guide can be found at [Michigan.gov/CCHD](http://Michigan.gov/CCHD). [Click here for a direct link.](#)

## In-person event opportunities



The Newborn Screening and the BioTrust for Health Programs attend in-person events geared towards new or expecting families to educate the public about newborn screening. With the COVID-19 pandemic, these in-person efforts were put on hold, but program staff have resumed attending events. If your hospital hosts education events for parents and has opportunities for programs, we would love to participate. Please let us know of any upcoming events at your hospital and how we can participate. Email us at [NewbornScreening@michigan.gov](mailto:NewbornScreening@michigan.gov).



## Upcoming holiday courier schedule

### Lower Peninsula hospitals:

Monday, May 29 – Holiday/Sunday schedule  
 Monday, June 19 – Holiday/Sunday schedule  
 Tuesday, July 04 – Holiday/Sunday schedule

### Upper Peninsula hospitals:

Monday, May 29 – UPS will be closed  
 Monday, June 19 – Operations will not be affected  
 Tuesday, July 04 – UPS will be closed



## Technical assistance

- Angela Aldrich, NBS nurse consultant, is available to work with staff in any hospital that requests help with specimen collection. [Click here to reach her by email](mailto:AldrichA1@Michigan.gov) (AldrichA1@Michigan.gov).
- Kristen Thompson, NBS Coordinator, is available to work with hospitals on CCHD pulse oximetry screening and reporting. [Click here to reach Kristen by email](mailto:ThompsonK23@Michigan.gov) (ThompsonK23@Michigan.gov).
- Shelby Heppes (formerly Atkinson), Genomics and NBS Research Coordinator, is available to assist with questions related to BioTrust for Health. [Click here to reach Shelby by email](mailto:Heppes@michigan.gov) (Heppes@michigan.gov).

**Together we can achieve our goal that all children diagnosed through newborn screening receive prompt and careful treatment in order to live the healthiest lives possible.**

**Please remember to share the quarterly newsletter with staff!**

If you have questions, please contact the NBS Follow-up Program at 517-335-4181 or [NewbornScreening@michigan.gov](mailto:NewbornScreening@michigan.gov) or [visit our website at Michigan.gov/NewbornScreening](http://Michigan.gov/NewbornScreening).