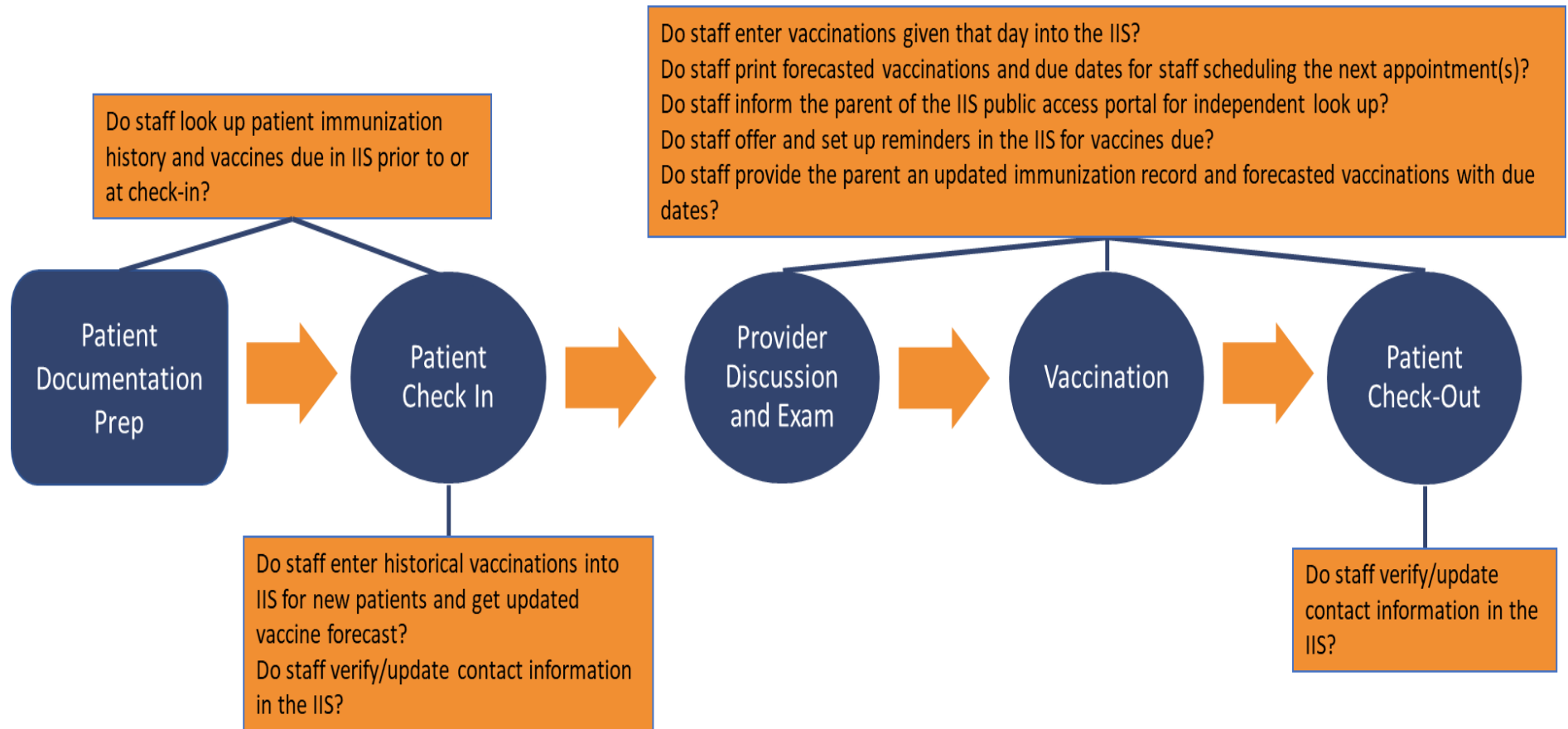


Core Strategy Discussion Prompts: Leverage Immunization Information System (IIS) Functionality to Improve Immunization Practice – Direct Data Entry

Task	Notes
<p>Assess patient's immunization status</p> <p><i>How do staff identify which doses are due for the scheduled visit?</i></p>	
<p>Ensure accurate immunization record</p> <p><i>How do staff reconcile any immunization record information brought by the parent to the appointment with their immunization plan for the patient?</i></p>	
<p>Determine which vaccines are due next and the earliest date they may be given</p> <p><i>Where and how do clinic staff determine future immunizations and due dates? How is this information documented and shared with the parent?</i></p>	
<p>Maintain accurate demographic and contact information</p> <p><i>How do staff ensure they can contact parent/guardian easily for immunization recall or other care issues?</i></p>	
<p>Remind parent/guardian of upcoming immunization visit(s)</p> <p><i>Which methods (text, e-mail, postcard, and/or phone reminders) does clinic staff use to ensure that the patient returns for their next immunization appointment(s)?</i></p>	
<p>Support parent/guardian knowledge of their child's immunization status</p> <p><i>Does the staff provide an updated immunization record to the parent/guardian, or tell them where/how they can access it independently?</i></p>	
<p>Ongoing quality assurance of immunization records</p> <p><i>How is staff performing quality assurance on the immunizations they report to the IIS (accuracy, completeness, timeliness of data entry)? Is staff managing patient active/inactive status in the IIS to ensure accurate assessment reports?</i></p>	

Assessing Processes for Leveraging the Immunization Information System (IIS) – Direct Data Entry



Data quality issues to consider:

1. Do staff routinely check to ensure the clinic is reporting immunizations to the IIS in a timely manner?
2. Do staff routinely review coverage or patient lists for missed opportunities, invalid doses, and patients not UTD?
3. Do staff regularly check patients' active/inactive status in the IIS and update when needed?
4. Do staff perform spot checks for completeness and accuracy of clinic immunization records in the IIS?