



INSTRUCTIONS FOR PLU MAPPING WITH NCR ISS45 POS SYSTEM

Updated September 2024



NCR ISS45

NCR ISS45 is a modular point of sale solution popular with wholesaler-served independents and small grocery chains for its customizability. If your store has ISS45, you will likely have a computer on site that manages your stores financial and inventory records.

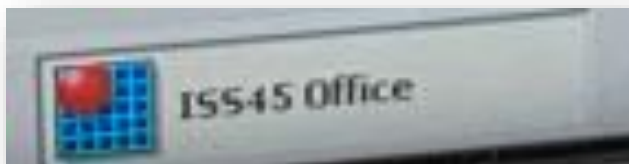
Why PLU Map?

Just like with any other point of sale system, PLU mapping, or the process of linking UPCs and store-specific fresh produce PLUs to WIC-eligible PLUs, is a necessary step to redeem fresh produce without error.

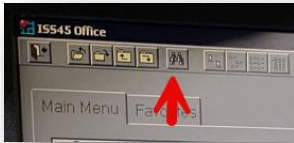
Failure to map PLUs means a WIC client cannot buy the item at your store. To assist with PLU mapping, the Michigan WIC Program is providing the following basic step-by-step guide for PLU mapping using your system. For more detailed information, our office encourages you to reach out to your POS provider for further instruction.

If you are with a Save-A-Lot using V8 of ISS45, you may also review page 58 of this [user guide](#).

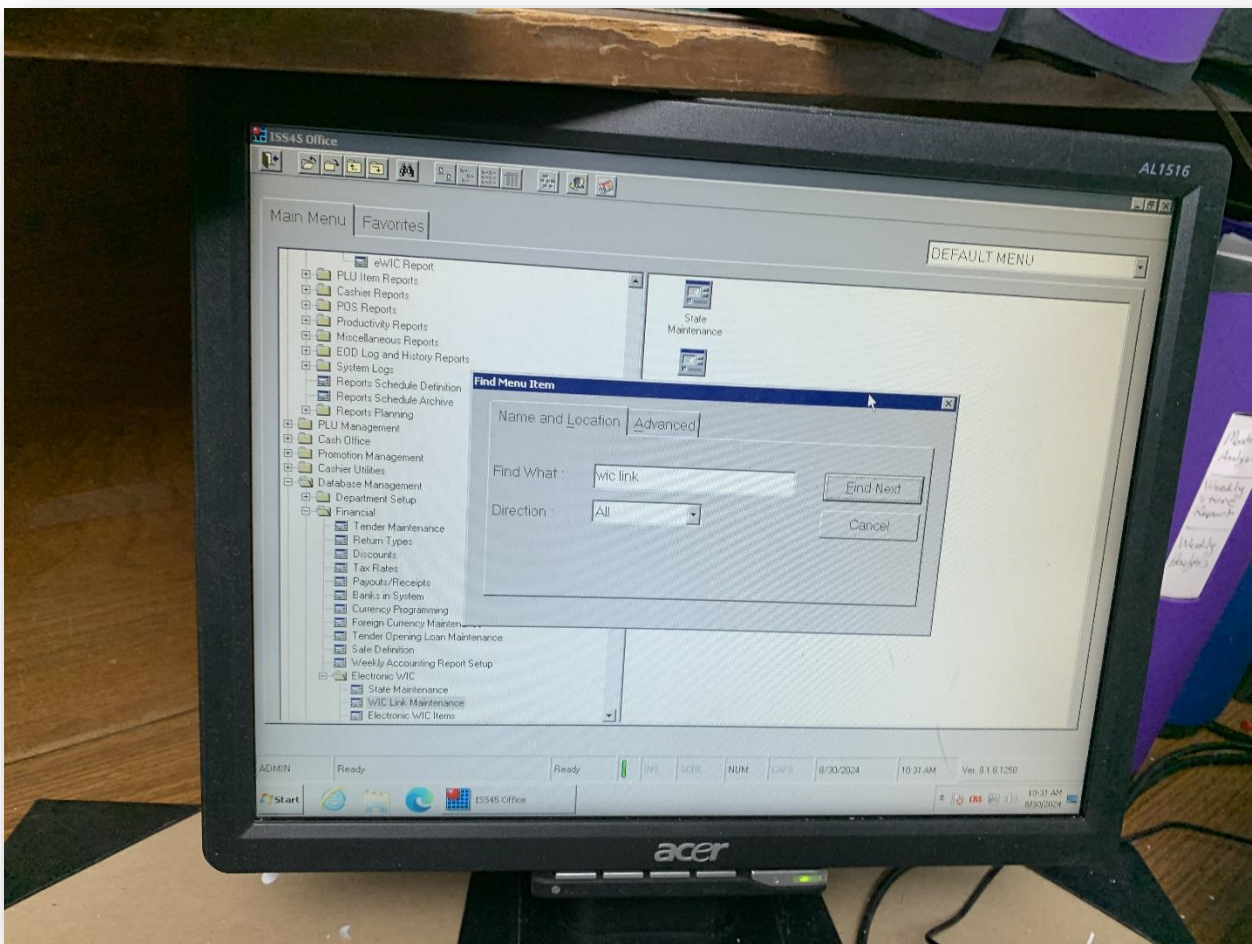
Step 1: Open ISS45 Office Application on your computer



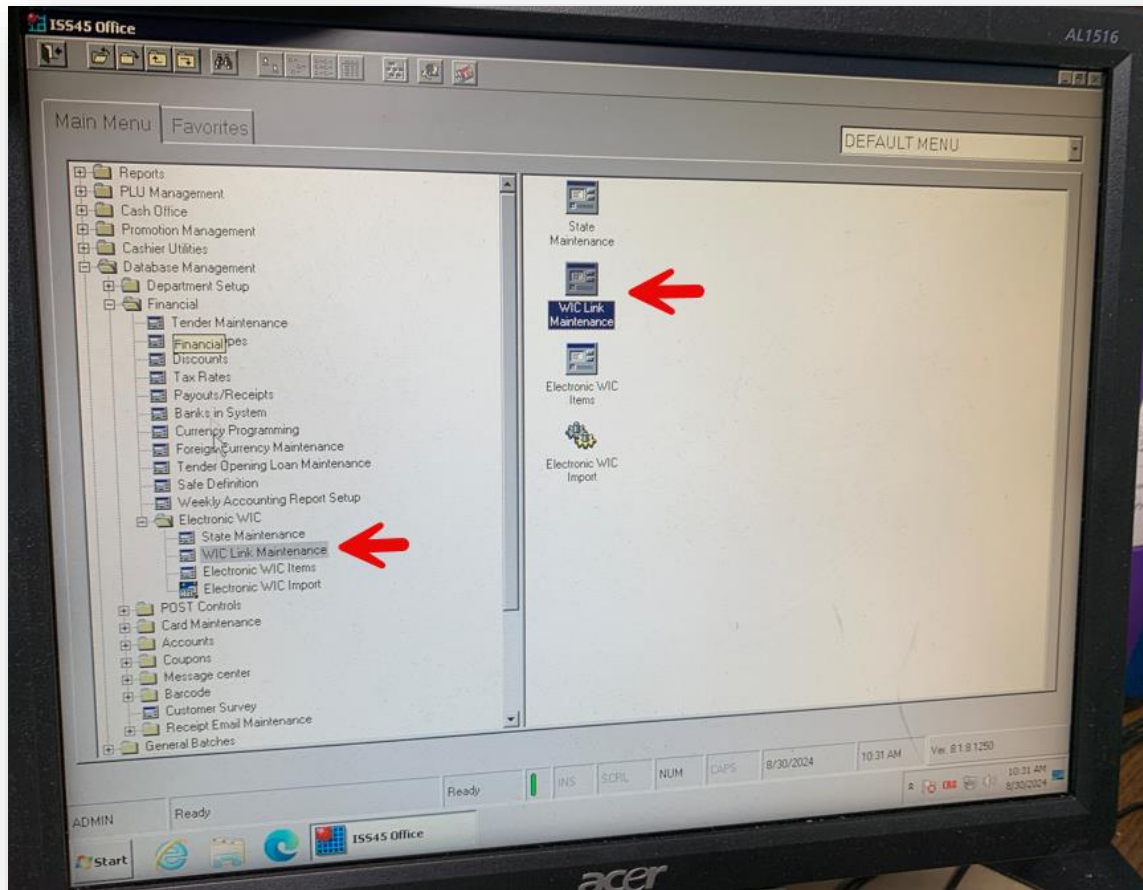
Step 2: Click on the binoculars symbol to activate the search feature



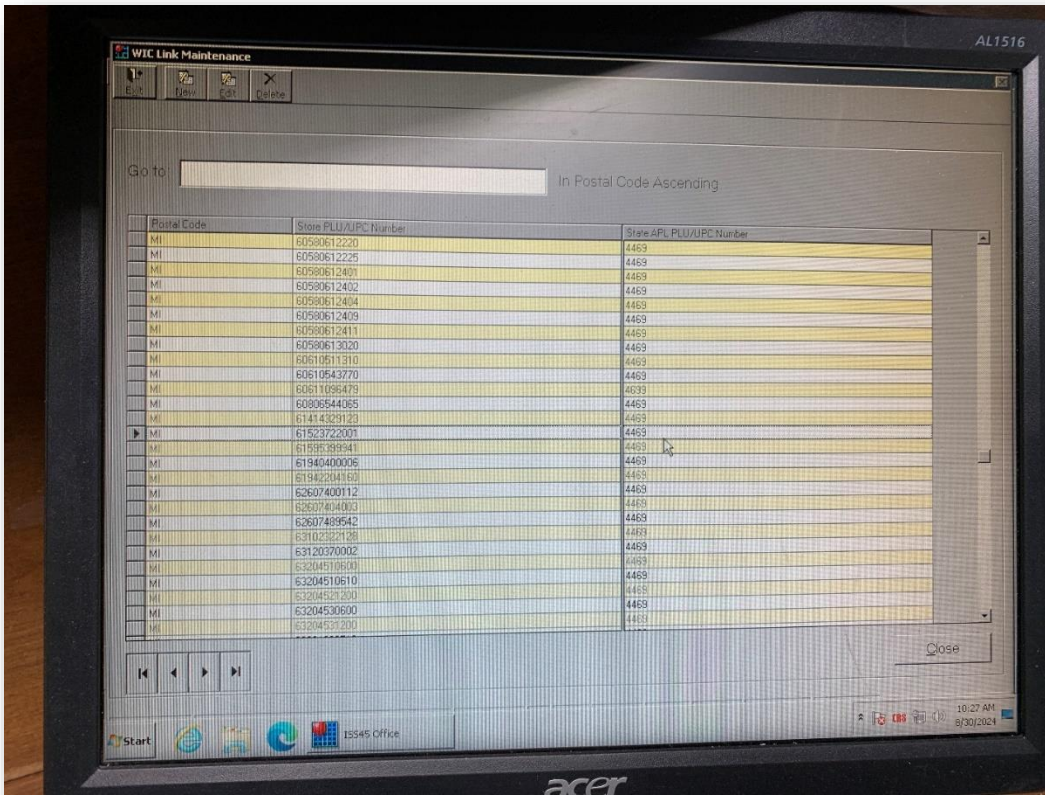
Step 3: Type "WIC" or "WIC link" in the search bar



Step 4: Open the application titled “WIC Link Maintenance”



Step 5: Type the 11 digits of a UPC (not including the final digit) or the complete store PLU



Step 6: A screen will appear with two fields. The first field will display the UPC or PLU you entered. In the second field, you will enter “4469” and click “Apply” to confirm your selection

Congratulations! You have mapped your fresh produce item to PLU 4469, allowing it to be purchased with WIC benefits. Now you need to go through every WIC-eligible fresh produce item that can be scanned at the register in your store and repeat this process. Make sure to look for all bagged or clamshell produce as well as bulk produce.