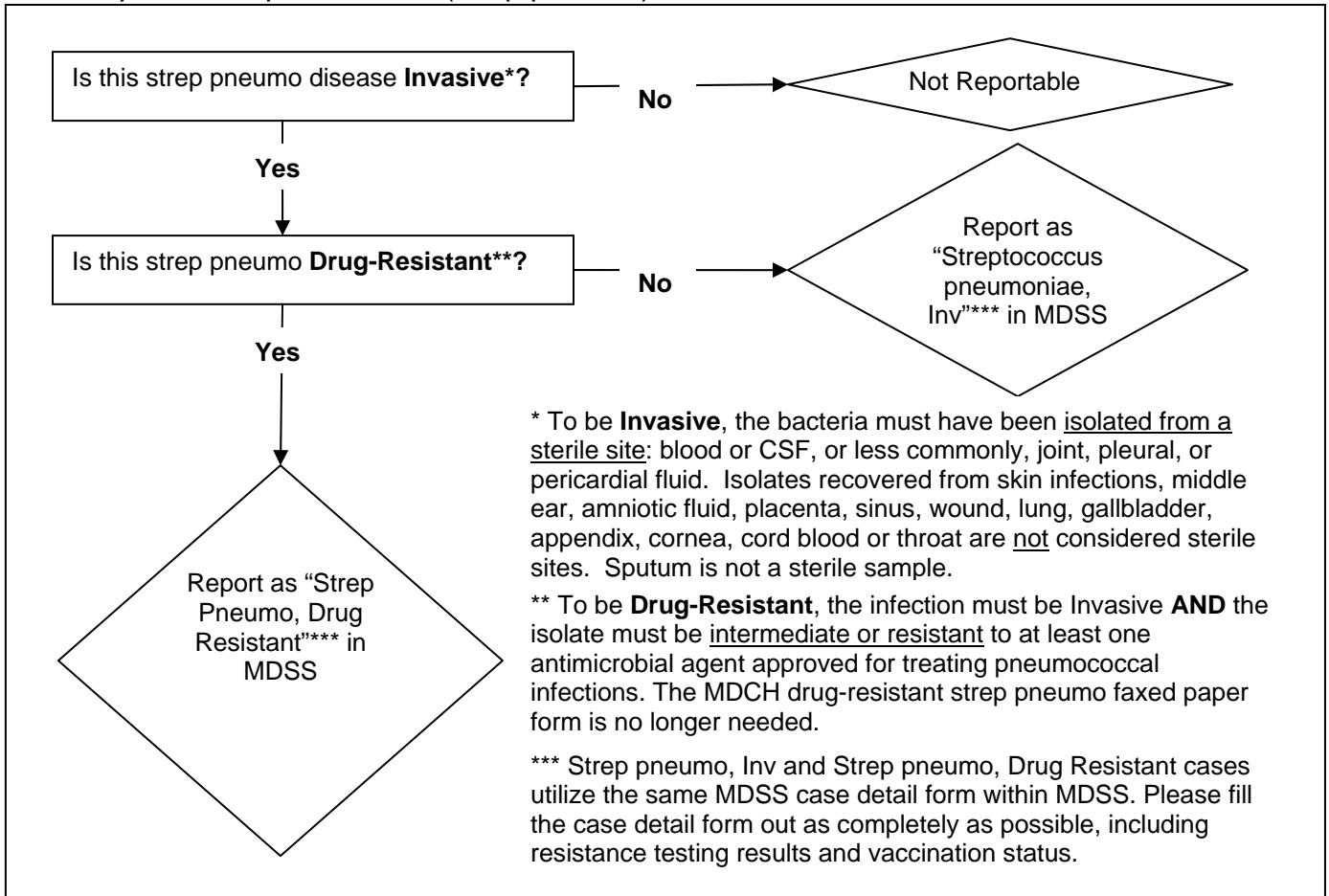


Update on Reporting of *Streptococcus pneumoniae* cases March, 2010

Following the 2010 update to the national case definition for “*Streptococcus pneumoniae*, Invasive” and clarification of the reporting requirements from the CDC, MDCH is requesting that the following algorithm be used when entering cases of *Streptococcus pneumoniae* (strep pneumo) into the MDSS.



Note on Reporting Bacterial Diseases, in General

Please use the most specific reportable condition available to report bacterial diseases; “Meningitis - Bacterial Other” should only be used if there is no other place to report a case. The following table is provided to assist with the classification of your reportable diseases.

Organism or Disease	Reportable Condition
<i>Neisseria meningitidis</i>	Meningococcal disease
<i>Streptococcus pyogenes</i> (Group A Strep)	Streptococcal Dis, Inv, Grp A
<i>Haemophilis influenzae</i> (Hib)	H. Influenzae Disease – Inv.
<i>Listeria monocytogenes</i>	Listeriosis
<i>Streptococcus pneumoniae</i>	**follow flow chart**
Meningitis caused by Group B <i>Streptococcus</i>	Meningitis – Bacterial Other
Meningitis caused by <i>Klebsiella</i> species	Meningitis – Bacterial Other