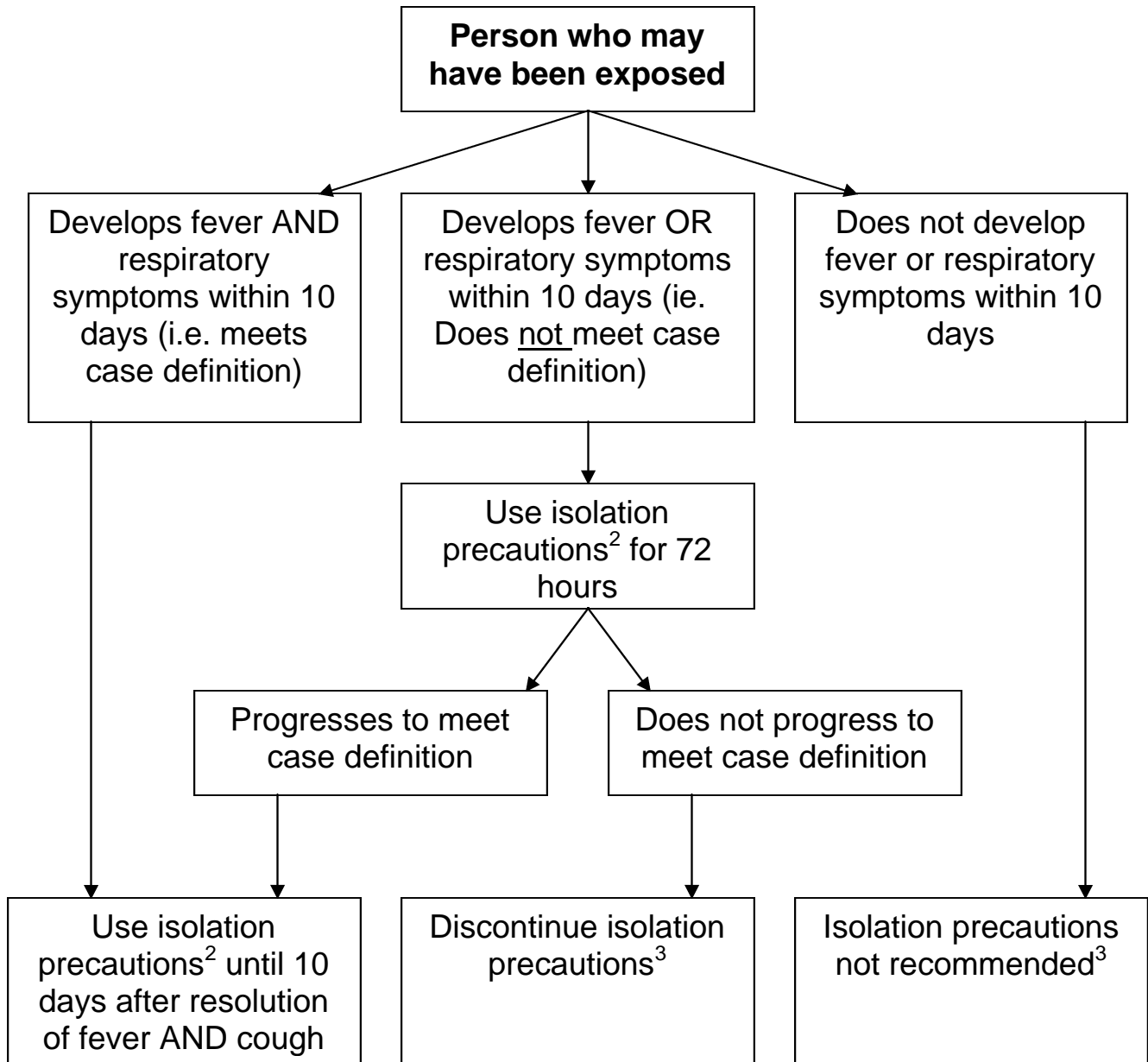


Management of persons who may have been exposed to SARS¹



¹ Exposure includes travel from areas with documented or suspected community transmission of SARS (currently mainland China; Hong Kong; Hanoi, Vietnam; Singapore; and Toronto, Canada) or close contact with persons who have SARS. Close contact is defined as having cared for, having lived with, or having direct contact with respiratory secretions and/or body fluids of a patient with SARS (e.g. health care workers or household contacts).

² Isolation precautions include limiting patient's interaction with others outside the home (e.g. should not go to school, work, out-of-home day care, church, or other public areas), and following infection control guidelines for the home or residential setting (<http://www.cdc.gov/ncidod/sars/ic-closecontacts.htm>) if not admitted to hospital for care.

³ Persons need not limit interactions outside of home (e.g. should not be excluded for school, work, out-of-home day care, church, or other public areas).