

Center Code	2008 volume			survival	Organ	survival
Note: KIDPANC is pancreas survival						
	No. Ki Tx	No. Pan Tx	Pan Graft Survival			
ALUA	271	14	88.9	96.33	KIDNEY	96.33
	11				KIDPANC	88.9
	3			84.62	PANC	84.62
AZGS	119	7	95.83	96.7	KIDNEY	96.7
	4				KIDPANC	95.83
	3			100	PANC	100
AZMC	172	28	87	94.87	KIDNEY	94.87
	26				KIDPANC	87
	2			94.12	PANC	94.12
AZUA	80	13	66.67	89.69	KIDNEY	89.69
	5				KIDPANC	66.67
	8			71.43	PANC	71.43
CACS	159	5	78.93	93.09	KIDNEY	93.09
	4				KIDPANC	78.93
	1			100	PANC	100
CALL	134	10	87.45	98.1	KIDNEY	98.1
	10				KIDPANC	87.45
	0			100	PANC	100
CAPM	220	19	88.89	95.54	KIDNEY	95.54
	18				KIDPANC	88.89
	1			100	PANC	100
CARC	31	2	100	94.86	KIDNEY	94.86
	1				KIDPANC	100
	1			na	PANC	na
CASD	99	4	52.08	94.35	KIDNEY	94.35
	2				KIDPANC	52.08
	2			na	PANC	na
CASF	360	18	84.83	95.31	KIDNEY	95.31
	12				KIDPANC	84.83
	6			82.8	PANC	82.8
CASG	18	2	60	89.18	KIDNEY	89.18
	1				KIDPANC	60
	1			100	PANC	100
CASH	81	6	75	93.21	KIDNEY	93.21
	6				KIDPANC	75
	0			100	PANC	100
CASM	113	2	69.23	95.1	KIDNEY	95.1
	1				KIDPANC	69.23
	1			na	PANC	na
CASU	77	2	100	95.68	KIDNEY	95.68
	2				KIDPANC	100
	0			na	PANC	na
CASV	140	16	84.62	89.49	KIDNEY	89.49
	14				KIDPANC	84.62
	2			100	PANC	100
CAUC	308	24	100	97.4	KIDNEY	97.4
	8				KIDPANC	100
	16			100	PANC	100

CAUH	70	1	100		97.93	KIDNEY	97.93
	1					KIDPANC	100
	0				100	PANC	100
COPM	69	9	58.33		94.84	KIDNEY	94.84
	8					KIDPANC	58.33
	1				na	PANC	na
COUC	126	9	100		93.38	KIDNEY	93.38
	9					KIDPANC	100
	0				60	PANC	60
CTYN	100	3	100		90.13	KIDNEY	90.13
	2					KIDPANC	100
	1				na	PANC	na
DCGU	46	15	74.07		93.67	KIDNEY	93.67
	5					KIDPANC	74.07
	10				50	PANC	50
DCWH	103	5	100		95.03	KIDNEY	95.03
	5					KIDPANC	100
					na	PANC	na
FLJM	224	32	97.74		93.29	KIDNEY	93.29
	16					KIDPANC	97.74
	16				NA	PANC	NA
FLSL	96	13	82.95		94.35	KIDNEY	94.35
	11					KIDPANC	82.95
	2				85.71	PANC	85.71
FLTG	214	27	87.69		94.93	KIDNEY	94.93
	25					KIDPANC	87.69
	2				100	PANC	100
FLUF	236	9	83.87		90.22	KIDNEY	90.22
	7					KIDPANC	83.87
	2				28.57	PANC	28.57
GAEM	163	26	80.8		93.72	KIDNEY	93.72
	26					KIDPANC	80.8
	0				100	PANC	100
GAPH	128	9	86.36		95.52	KIDNEY	95.52
	9					KIDPANC	86.36
	0				50	PANC	50
ILNM	260	31	90.77		94.15	KIDNEY	94.15
	15					KIDPANC	90.77
	16				80.77	PANC	80.77
ILPL	126	4	88.88			KIDNEY	88.88
	4				75	KIDPANC	75
	0				88.88	PANC	88.88
ILSF	46	8	100		96.67	KIDNEY	96.67
	4					KIDPANC	100
	4				100	PANC	100
ILUC	104	18	90		91.07	KIDNEY	91.07
	13					KIDPANC	90
	5				92.31	PANC	92.31
ILUI	100	12	66.67		94.04	KIDNEY	94.04
	4					KIDPANC	66.67
	8				100	PANC	100

INIM	247	65	91.67		94.99	KIDNEY	94.99
	30					KIDPANC	91.67
	35				92.18	PANC	92.18
IAIV	59	9	85.71		97.23	KIDNEY	97.23
	8					KIDPANC	85.71
	1				100	PANC	100
KSFV	43	3	100		90.82	KIDNEY	90.82
	1					KIDPANC	100
	2				NA	PANC	NA
KSUK	106	13	86.67		96.87	KIDNEY	96.87
	11					KIDPANC	86.67
	2				66.67	PANC	66.67
KYJH	84	5	78.43		93.57	KIDNEY	93.57
	4					KIDPANC	78.43
	1				50	PANC	50
KYUK	56	3	82.54		95.05	KIDNEY	95.05
	3					KIDPANC	82.54
	0				75	PANC	75
LAOF	104	6	87.5		94.83	KIDNEY	94.83
	6					KIDPANC	87.5
	0				100	PANC	100
LATU	113	12	86.67		92.87	KIDNEY	92.87
	11					KIDPANC	86.67
	1				50	PANC	50
LAWK	51	10	100		85.27	KIDNEY	85.27
	8					KIDPANC	100
	2				66.67	PANC	66.67
MEMC	45	2	100		93.57	KIDNEY	93.57
	1					KIDPANC	100
	1				100	PANC	100
MDJH	173	10	88.24		91.29	KIDNEY	91.29
	7					KIDPANC	88.24
	3				61.36	PANC	61.36
MDUM	233	12	73.64		88.54	KIDNEY	88.54
	11					KIDPANC	73.64
	1				53.38	PANC	53.38
MABI	46	5	85.76		92.85	KIDNEY	92.85
	0					KIDPANC	85.76
	5				78.26	PANC	78.26
MAUM	50	5	100		91.09	KIDNEY	91.09
	3					KIDPANC	100
	2				88.89	PANC	88.89
MIHF	102	7	52.29		87.17	KIDNEY	87.17
	4					KIDPANC	52.29
	3				80	PANC	80
MIUM	250	19	78.79		90.95	KIDNEY	90.95
	15					KIDPANC	78.79
	4				64.62	PANC	64.62
MNMC	174	9	72.73		93.75	KIDNEY	93.75
	3					KIDPANC	72.73
	6				96.88	PANC	96.88

MNUM	201	57	75.56		95.58	KIDNEY	95.58
	17					KIDPANC	75.56
	40				73.47	PANC	73.47
MOBH	160	5	88.89		97.28	KIDNEY	97.28
	5					KIDPANC	88.89
	0				100	PANC	100
MORH	64	6	82.35		94.46	KIDNEY	94.46
	6					KIDPANC	82.35
	0				100	PANC	100
MOSL	49	2	90.91		50	KIDNEY	50
	2					KIDPANC	90.91
	0				66.67	PANC	66.67
NEUM	108	40	91.67		92.76	KIDNEY	92.76
	9					KIDPANC	91.67
	31				100	PANC	100
NHDH	41	13	100		96.58	KIDNEY	96.58
	6					KIDPANC	100
	7				85.71	PANC	85.71
NJHK	55	4	83.33		84.56	KIDNEY	84.56
	3					KIDPANC	83.33
	1				50	PANC	50
NJLL	26	3	82.5		86.07	KIDNEY	86.07
	2					KIDPANC	82.5
	1				66.67	PANC	66.67
NJRW	102	12	88.24		89.87	KIDNEY	89.87
	11					KIDPANC	88.24
	1				66.67	PANC	66.67
NJSB	213	8	85.23		91.93	KIDNEY	91.93
	6					KIDPANC	85.23
	2				53.57	PANC	53.57
NYBU	61	5	100		95.15	KIDNEY	95.15
	3					KIDPANC	100
	2				100	PANC	100
NYFL	52	3	87.39		91.73	KIDNEY	91.73
	3					KIDPANC	87.39
	0				NA	PANC	NA
NYMS	171	12	100		91.54	KIDNEY	91.54
	1					KIDPANC	100
	11				79.55	PANC	79.55
NYNY	223	13	87.5		93.51	KIDNEY	93.51
	5					KIDPANC	87.5
	8				100	PANC	100
NCBG	183	14	85.2		92.62	KIDNEY	92.62
	11					KIDPANC	85.2
	3				87.5	PANC	87.5
NCCM	132	8	94.12		93.93	KIDNEY	93.93
	8					KIDPANC	94.12
	0				NA	PANC	NA
NCDU	122	14	83.22		91.58	KIDNEY	91.58
	14					KIDPANC	83.22
	0				50	PANC	50

NCMH	82	5	71.43		95.89	KIDNEY	95.89
	4					KIDPANC	71.43
	1				100	PANC	100
OHCC	168	31	76.33		93.23	KIDNEY	93.23
	16					KIDPANC	76.33
	15				96.88	PANC	96.88
OHCM	6	5			92.86	KIDNEY	92.86
	0					KIDPANC	
	5				NA	PANC	NA
OHOU	215	35	83.8		90.94	KIDNEY	90.94
	29					KIDPANC	83.8
	6				87.12	PANC	87.12
OHUC	62	13	83.26		96.67	KIDNEY	96.67
	6					KIDPANC	83.26
	7				80	PANC	80
OHUH	83	5	76.92		93.51	KIDNEY	93.51
	5					KIDPANC	76.92
	0				62.5	PANC	62.5
OKBC	62	4	100		90.92	KIDNEY	90.92
	4					KIDPANC	100
	0				33.33	PANC	33.33
ORUO	114	10	91.67		94.71	KIDNEY	94.71
	10					KIDPANC	91.67
	0				80	PANC	80
PAAG	70	7	100		94.08	KIDNEY	94.08
	0					KIDPANC	100
	7				85.71	PANC	85.71
PAGM	46	2	79.55		86.54	KIDNEY	86.54
	1					KIDPANC	79.55
	1				NA	PANC	NA
PAHE	32	5	100		82.5	KIDNEY	82.5
	1					KIDPANC	100
	4				100	PANC	100
PAHM	86	3	100		79.2	KIDNEY	79.2
	1					KIDPANC	100
	2				100	PANC	100
PAPT	171	23	82.14		90.15	KIDNEY	90.15
	7					KIDPANC	82.14
	16				83.3	PANC	83.3
PATJ	83	2	87.5		96.23	KIDNEY	96.23
	2					KIDPANC	87.5
	0				NA	PANC	NA
PAUP	162	9	78.7		95.28	KIDNEY	95.28
	4					KIDPANC	78.7
	5				25	PANC	25
RIRH	40	3	50		94.73	KIDNEY	94.73
	1					KIDPANC	50
	2				53.57	PANC	53.57
SCMU	187	19	81.67		92.4	KIDNEY	92.4
	16					KIDPANC	81.67
	3				79.55	PANC	79.55

TNMH	88	7	84.62		89.71	KIDNEY	89.71
	4					KIDPANC	84.62
	3				80	PANC	80
TNVU	130	10	94.74		93.8	KIDNEY	93.8
	9					KIDPANC	94.74
	1				100	PANC	100
TXAS	105	6	92.31		90.62	KIDNEY	90.62
	6					KIDPANC	92.31
	0				100	PANC	100
TXHH	101	17	94.12		88.45	KIDNEY	88.45
	11					KIDPANC	94.12
	6				100	PANC	100
TXHS	157	4	100		92.45	KIDNEY	92.45
	0					KIDPANC	100
	4				84.62	PANC	84.62
TXJS	30	5	50		89.62	KIDNEY	89.62
	4					KIDPANC	50
	1				100	PANC	100
TXMC	96	7	100		96.84	KIDNEY	96.84
	7					KIDPANC	100
	0				50	PANC	50
TXMH	124	10	100		98.07	KIDNEY	98.07
	7					KIDPANC	100
	3				NA	PANC	NA
TXRM	34	1			92.52	KIDNEY	92.52
	0				NA	KIDPANC	NA
	1				NA	PANC	NA
TXSP	39	3	50		89.47	KIDNEY	89.47
	3					KIDPANC	50
					NA	PANC	NA
TXSW	41	4	100		97.1	KIDNEY	97.1
	4					KIDPANC	100
	0				100	PANC	100
TXTX	130	12	87.5		92.14	KIDNEY	92.14
	12					KIDPANC	87.5
	0				80.81	PANC	80.81
UTLD	104	10	85		97.06	KIDNEY	97.06
	9					KIDPANC	85
	1				50	PANC	50
UTMC	53	1	75		95.66	KIDNEY	95.66
	0					KIDPANC	75
	1				100	PANC	100
VTMC	46	9	100		92.27	KIDNEY	92.27
	9					KIDPANC	100
	0				75	PANC	75
VAFH	101	7	69.23		93.96	KIDNEY	93.96
	5					KIDPANC	69.23
	2				75	PANC	75
VAMC	110	2	40		95.31	KIDNEY	95.31
	2					KIDPANC	40
	0				NA	PANC	NA

VAUV	111	14	100	90.05	KIDNEY	90.05
	8				KIDPANC	100
	6			70.93	PANC	70.93
WASM	69	6	92.36	95.21	KIDNEY	95.21
	3				KIDPANC	92.36
	3			100	PANC	100
WAUW	117	7	76.63	97.28	KIDNEY	97.28
	7				KIDPANC	76.63
	0			100	PANC	100
WAVM	83	10	81.25	95.56	KIDNEY	95.56
	6			81.25	KIDPANC	81.25
	4			75	PANC	75
WISE	120	10	61.9	97.64	KIDNEY	97.64
	9			61.9	KIDPANC	61.9
	1			50	PANC	50
WISL	41	3	100	93.24	KIDNEY	93.24
	2			100	KIDPANC	100
	1			50	PANC	50
WIUW	326	52	84.32	90.84	KIDNEY	90.84
	38			84.32	KIDPANC	84.32
	13			88.29	PANC	88.29

Center	Hospital #	Kidney Transplants	Pancreas Transplants	Pan Graft Survival	Sums
INIM	34	247	65	91.67	312
MNUM	51	201	57	75.56	258
WIUW	108	326	52	84.32	378
NEUM	55	108	40	91.67	148
OHOU	71	215	35	83.8	250
FLJM	23	224	32	97.74	256
ILNM	29	260	31	90.77	291
OHCC	69	168	31	76.33	199
AZMC	3	172	28	87	200
FLTG	25	214	27	87.69	241
GAEM	27	163	26	80.8	189
CAUC	16	308	24	100	332
PAPT	80	171	23	82.14	194
MIUM	49	250	19	78.79	269
CAPM	7	220	19	88.89	239
SCMU	84	187	19	81.67	206
CASF	10	360	18	84.83	378
ILUC	32	104	18	90	122
TXHH	88	101	17	94.12	118
CASV	15	140	16	84.62	156
DCGU	21	46	15	74.07	61
ALUA	1	271	14	88.9	285
NCBG	65	183	14	85.2	197
NCDU	67	122	14	83.22	136
VAUV	102	111	14	100	125
NYNY	64	223	13	87.5	236
KSUK	37	106	13	86.67	119
FLSL	24	96	13	82.95	109
AZUA	4	80	13	66.67	93
OHUC	72	62	13	83.26	75
NHDH	56	41	13	100	54
MDUM	45	233	12	73.64	245
NYMS	63	171	12	100	183
TXTX	96	130	12	87.5	142
LATU	41	113	12	86.67	125
NJRW	59	102	12	88.24	114
ILUI	33	100	12	66.67	112
MDJH	44	173	10	88.24	183
CALL	6	134	10	87.45	144
TNVU	86	130	10	94.74	140
TXMH	92	124	10	100	134
WISE	106	120	10	61.9	130
ORUO	75	114	10	91.67	124
UTLD	97	104	10	85	114
WAVM	105	83	10	81.25	93
LAWK	42	51	10	100	61
FLUF	26	236	9	83.87	245
MNMC	50	174	9	72.73	183
PAUP	82	162	9	78.7	171
GAPH	28	128	9	86.36	137
COUC	19	126	9	100	135
COPM	18	69	9	58.33	78
IAIV	35	59	9	85.71	68



VTMC	99	46	9	100	55
NJSB	60	213	8	85.23	221
NCCM	66	132	8	94.12	140
ILSF	31	46	8	100	54
AZGS	2	119	7	95.83	126
WAUW	104	117	7	76.63	124
MIHF	48	102	7	52.29	109
VAFH	100	101	7	69.23	108
TXMC	91	96	7	100	103
TNMH	85	88	7	84.62	95
PAAG	76	70	7	100	77
TXAS	87	105	6	92.31	111
LAOF	40	104	6	87.5	110
CASH	12	81	6	75	87
WASM	103	69	6	92.36	75
MORH	53	64	6	82.35	70
MOBH	52	160	5	88.89	165
CACS	5	159	5	78.93	164
DCWH	22	103	5	100	108
KYJH	38	84	5	78.43	89
OHUH	73	83	5	76.92	88
NCMH	68	82	5	71.43	87
NYBU	61	61	5	100	66
MAUM	47	50	5	100	55
MABI	46	46	5	85.76	51
PAHE	78	32	5	100	37
TXJS	90	30	5	50	35
OHCM	70	6	5	0	11
TXHS	89	157	4	100	161
ILPL	30	126	4	88.88	130
CASD	9	99	4	52.08	103
OKBC	74	62	4	100	66
NJHK	57	55	4	83.33	59
TXSW	95	41	4	100	45
CTYN	20	100	3	100	103
PAHM	79	86	3	100	89
KYUK	39	56	3	82.54	59
NYFL	62	52	3	87.39	55
KSFV	36	43	3	100	46
WISL	107	41	3	100	44
RIRH	83	40	3	50	43
TXSP	94	39	3	50	42
NJLL	58	26	3	82.5	29
CASM	13	113	2	69.23	115
VAMC	101	110	2	40	112
PATJ	81	83	2	87.5	85
CASU	14	77	2	100	79
MOSL	54	49	2	90.91	51
PAGM	77	46	2	79.55	48
MEMC	43	45	2	100	47
CARC	8	31	2	100	33
CASG	11	18	2	60	20
CAUH	17	70	1	100	71
UTMC	98	53	1	75	54

TXRM

93

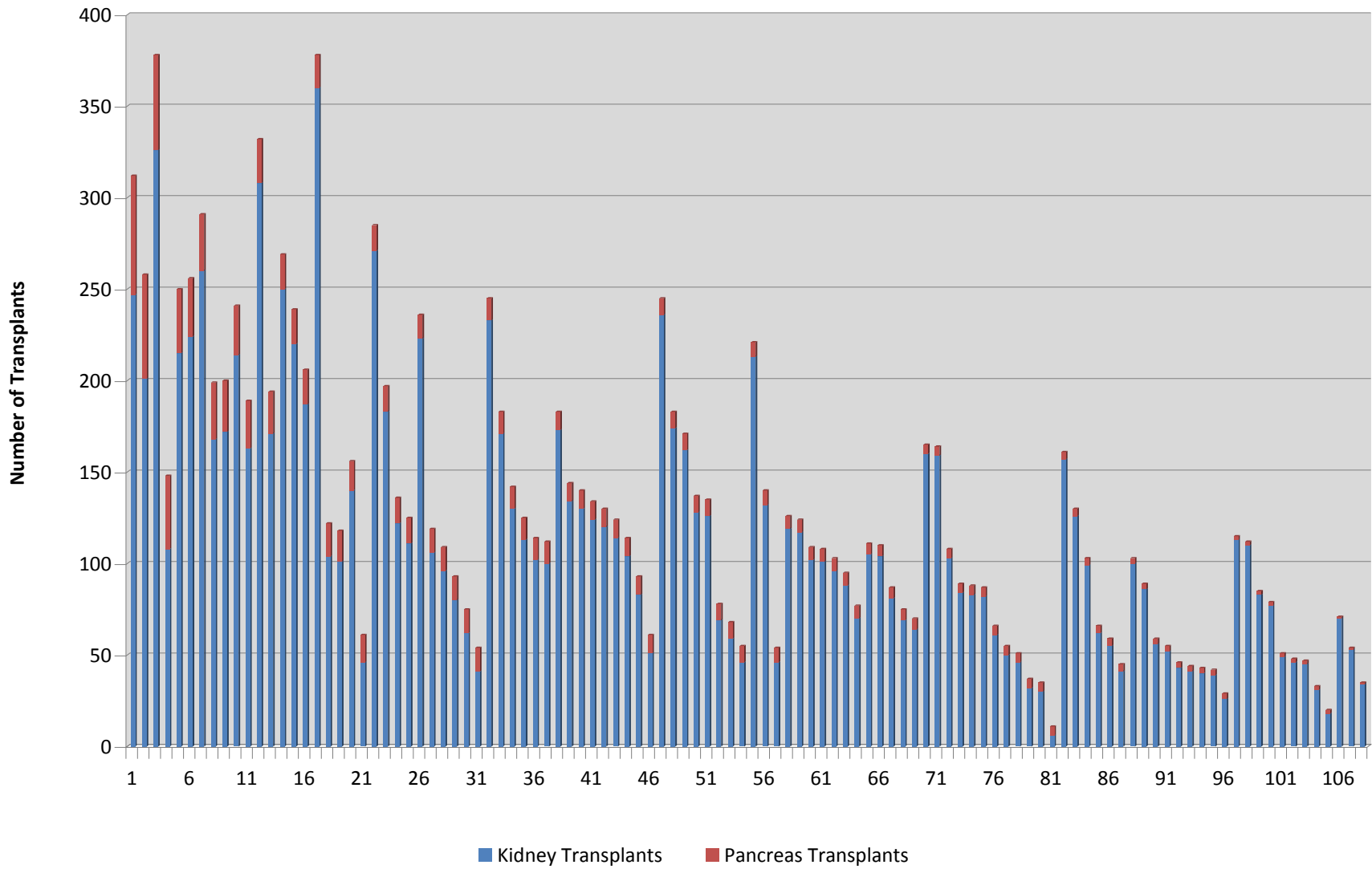
34

1

0

35

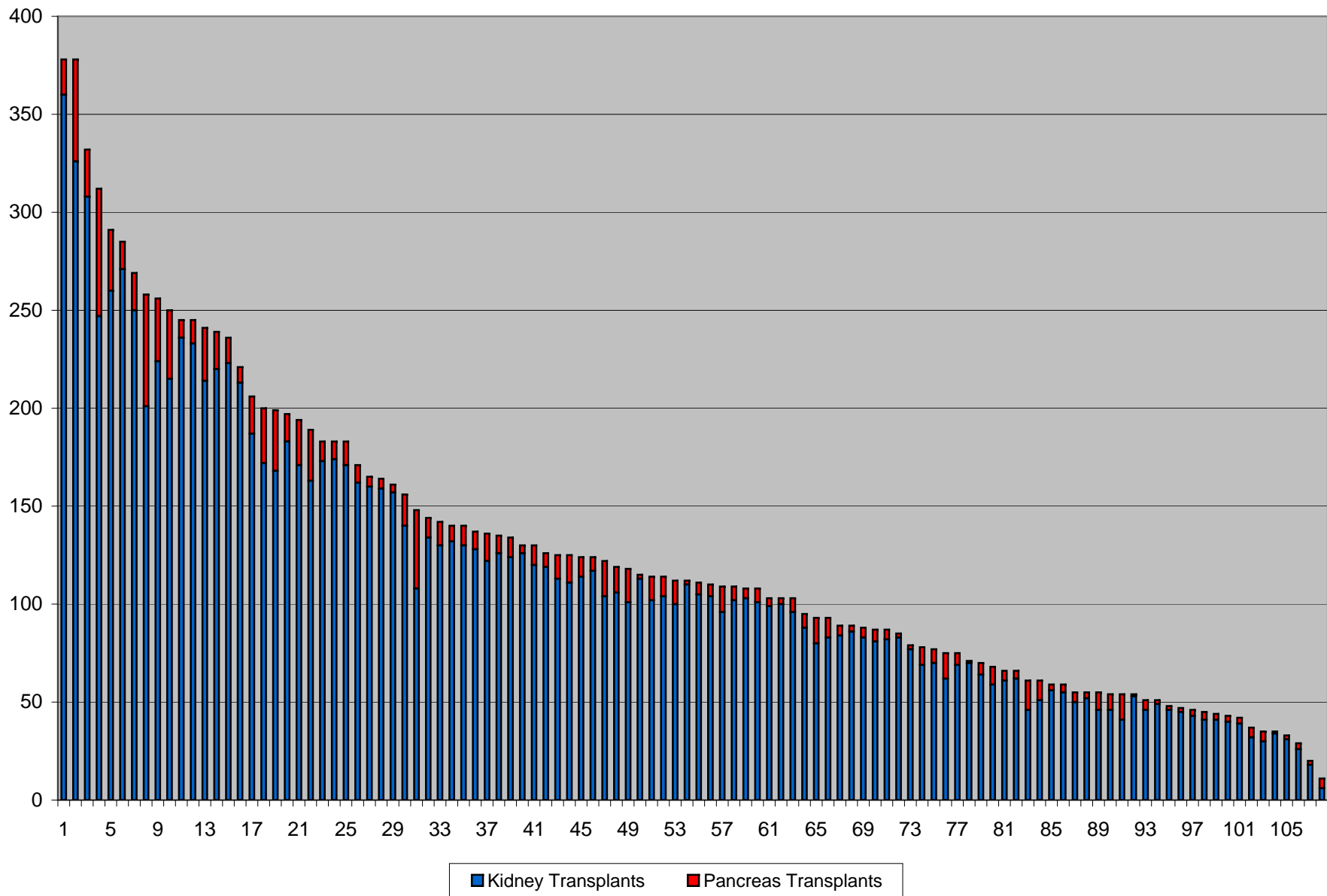
## 2007 U.S. Pancreas and Kidney Transplant Volume Comparison



	Hospital #	Kidney Transplants	Pancreas Transplants	Pan Graft Survival	Sums
CASF	10	360	18	84.83	378
WIUW	108	326	52	84.32	378
CAUC	16	308	24	100	332
INIM	34	247	65	91.67	312
ILNM	29	260	31	90.77	291
ALUA	1	271	14	88.9	285
MIUM	49	250	19	78.79	269
MNUM	51	201	57	75.56	258
FLJM	23	224	32	97.74	256
OHOU	71	215	35	83.8	250
FLUF	26	236	9	83.87	245
MDUM	45	233	12	73.64	245
FLTG	25	214	27	87.69	241
CAPM	7	220	19	88.89	239
NYNY	64	223	13	87.5	236
NJSB	60	213	8	85.23	221
SCMU	84	187	19	81.67	206
AZMC	3	172	28	87	200
OHCC	69	168	31	76.33	199
NCBG	65	183	14	85.2	197
PAPT	80	171	23	82.14	194
GAEM	27	163	26	80.8	189
MDJH	44	173	10	88.24	183
MNMC	50	174	9	72.73	183
NYMS	63	171	12	100	183
PAUP	82	162	9	78.7	171
MOBH	52	160	5	88.89	165
CACS	5	159	5	78.93	164
TXHS	89	157	4	100	161
CASV	15	140	16	84.62	156
NEUM	55	108	40	91.67	148
CALL	6	134	10	87.45	144
TXTX	96	130	12	87.5	142
NCCM	66	132	8	94.12	140
TNVU	86	130	10	94.74	140
GAPH	28	128	9	86.36	137
NCDU	67	122	14	83.22	136
COUC	19	126	9	100	135
TXMH	92	124	10	100	134
ILPL	30	126	4	88.88	130
WISE	106	120	10	61.9	130
AZGS	2	119	7	95.83	126
LATU	41	113	12	86.67	125
VAUV	102	111	14	100	125
ORUO	75	114	10	91.67	124
WAUW	104	117	7	76.63	124
ILUC	32	104	18	90	122
KSUK	37	106	13	86.67	119
TXHH	88	101	17	94.12	118
CASM	13	113	2	69.23	115

NJRW	59	102	12	88.24	114
UTLD	97	104	10	85	114
ILUI	33	100	12	66.67	112
VAMC	101	110	2	40	112
TXAS	87	105	6	92.31	111
LAOF	40	104	6	87.5	110
FLSL	24	96	13	82.95	109
MIHF	48	102	7	52.29	109
DCWH	22	103	5	100	108
VAFH	100	101	7	69.23	108
CASD	9	99	4	52.08	103
CTYN	20	100	3	100	103
TXMC	91	96	7	100	103
TNMH	85	88	7	84.62	95
AZUA	4	80	13	66.67	93
WAVM	105	83	10	81.25	93
KYJH	38	84	5	78.43	89
PAHM	79	86	3	100	89
OHUH	73	83	5	76.92	88
CASH	12	81	6	75	87
NCMH	68	82	5	71.43	87
PATJ	81	83	2	87.5	85
CASU	14	77	2	100	79
COPM	18	69	9	58.33	78
PAAG	76	70	7	100	77
OHUC	72	62	13	83.26	75
WASM	103	69	6	92.36	75
CAUH	17	70	1	100	71
MORH	53	64	6	82.35	70
IAIV	35	59	9	85.71	68
NYBU	61	61	5	100	66
OKBC	74	62	4	100	66
DCGU	21	46	15	74.07	61
LAWK	42	51	10	100	61
KYUK	39	56	3	82.54	59
NJHK	57	55	4	83.33	59
MAUM	47	50	5	100	55
NYFL	62	52	3	87.39	55
VTMC	99	46	9	100	55
ILSF	31	46	8	100	54
NHDH	56	41	13	100	54
UTMC	98	53	1	75	54
MABI	46	46	5	85.76	51
MOSL	54	49	2	90.91	51
PAGM	77	46	2	79.55	48
MEMC	43	45	2	100	47
KSFV	36	43	3	100	46
TXSW	95	41	4	100	45
WISL	107	41	3	100	44
RIRH	83	40	3	50	43
TXSP	94	39	3	50	42

PAHE	78	32	5	100	37
TXJS	90	30	5	50	35
TXRM	93	34	1	0	35
CARC	8	31	2	100	33
NJLL	58	26	3	82.5	29
CASG	11	18	2	60	20
OHCM	70	6	5	0	11

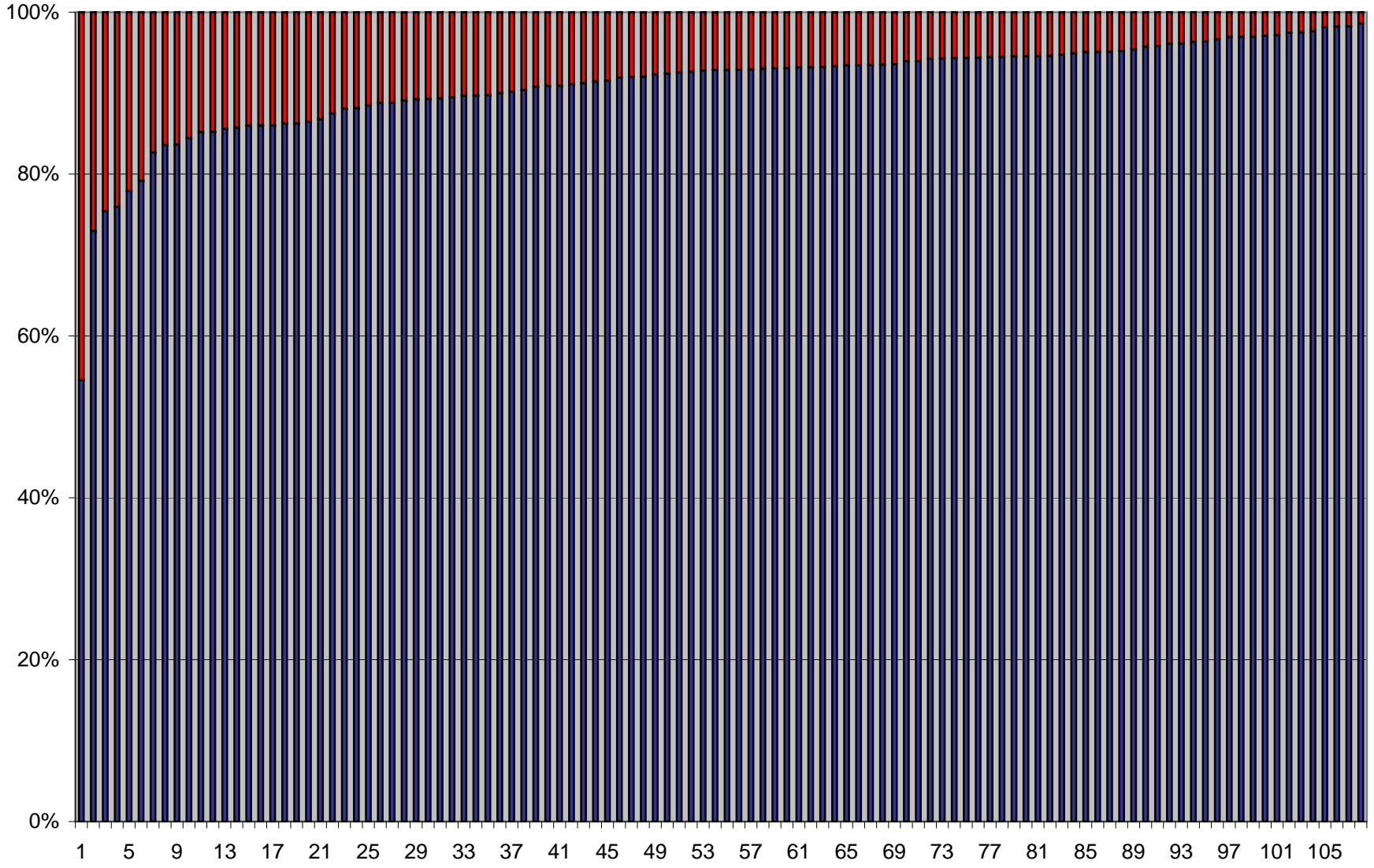


Center	Hospital #	Kidney Transplants	Pancreas Transplants	Percentage
OHCM	70	6	5	83.33
NEUM	55	108	40	37.04
DCGU	21	46	15	32.61
NHDH	56	41	13	31.71
MNUM	51	201	57	28.36
INIM	34	247	65	26.32
OHUC	72	62	13	20.97
LAWK	42	51	10	19.61
VTMC	99	46	9	19.57
OHCC	69	168	31	18.45
ILSF	31	46	8	17.39
ILUC	32	104	18	17.31
TXHH	88	101	17	16.83
TXJS	90	30	5	16.67
OHOU	71	215	35	16.28
AZMC	3	172	28	16.28
AZUA	4	80	13	16.25
WIUW	108	326	52	15.95
GAEM	27	163	26	15.95
PAHE	78	32	5	15.63
IAIV	35	59	9	15.25
FLJM	23	224	32	14.29
FLSL	24	96	13	13.54
PAPT	80	171	23	13.45
COPM	18	69	9	13.04
FLTG	25	214	27	12.62
VAUV	102	111	14	12.61
KSUK	37	106	13	12.26
WAVM	105	83	10	12.05
ILUI	33	100	12	12.00
ILNM	29	260	31	11.92
NJRW	59	102	12	11.76
NJLL	58	26	3	11.54
NCDU	67	122	14	11.48
CASV	15	140	16	11.43
CASG	11	18	2	11.11
MABI	46	46	5	10.87
LATU	41	113	12	10.62
SCMU	84	187	19	10.16
PAAG	76	70	7	10.00
MAUM	47	50	5	10.00
TXSW	95	41	4	9.76
UTLD	97	104	10	9.62
MORH	53	64	6	9.38
TXTX	96	130	12	9.23
ORUO	75	114	10	8.77
WASM	103	69	6	8.70
CAPM	7	220	19	8.64
WISE	106	120	10	8.33
NYBU	61	61	5	8.20



TXMH	92	124	10	8.06
TNMH	85	88	7	7.95
CAUC	16	308	24	7.79
TNVU	86	130	10	7.69
TXSP	94	39	3	7.69
NCBG	65	183	14	7.65
MIUM	49	250	19	7.60
RIRH	83	40	3	7.50
CALL	6	134	10	7.46
CASH	12	81	6	7.41
WISL	107	41	3	7.32
TXMC	91	96	7	7.29
NJHK	57	55	4	7.27
COUC	19	126	9	7.14
GAPH	28	128	9	7.03
NYMS	63	171	12	7.02
KSFV	36	43	3	6.98
VAFH	100	101	7	6.93
MIHF	48	102	7	6.86
OKBC	74	62	4	6.45
CARC	8	31	2	6.45
NCMH	68	82	5	6.10
NCCM	66	132	8	6.06
OHUH	73	83	5	6.02
WAUW	104	117	7	5.98
KYJH	38	84	5	5.95
AZGS	2	119	7	5.88
NYNY	64	223	13	5.83
MDJH	44	173	10	5.78
LAOF	40	104	6	5.77
NYFL	62	52	3	5.77
TXAS	87	105	6	5.71
PAUP	82	162	9	5.56
KYUK	39	56	3	5.36
MNMC	50	174	9	5.17
ALUA	1	271	14	5.17
MDUM	45	233	12	5.15
CASF	10	360	18	5.00
DCWH	22	103	5	4.85
MEMC	43	45	2	4.44
PAGM	77	46	2	4.35
MOSL	54	49	2	4.08
CASD	9	99	4	4.04
FLUF	26	236	9	3.81
NJSB	60	213	8	3.76
PAHM	79	86	3	3.49
ILPL	30	126	4	3.17
CACS	5	159	5	3.14
MOBH	52	160	5	3.13
CTYN	20	100	3	3.00
TXRM	93	34	1	2.94

CASU	14	77	2	2.60
TXHS	89	157	4	2.55
PATJ	81	83	2	2.41
UTMC	98	53	1	1.89
VAMC	101	110	2	1.82
CASM	13	113	2	1.77
CAUH	17	70	1	1.43



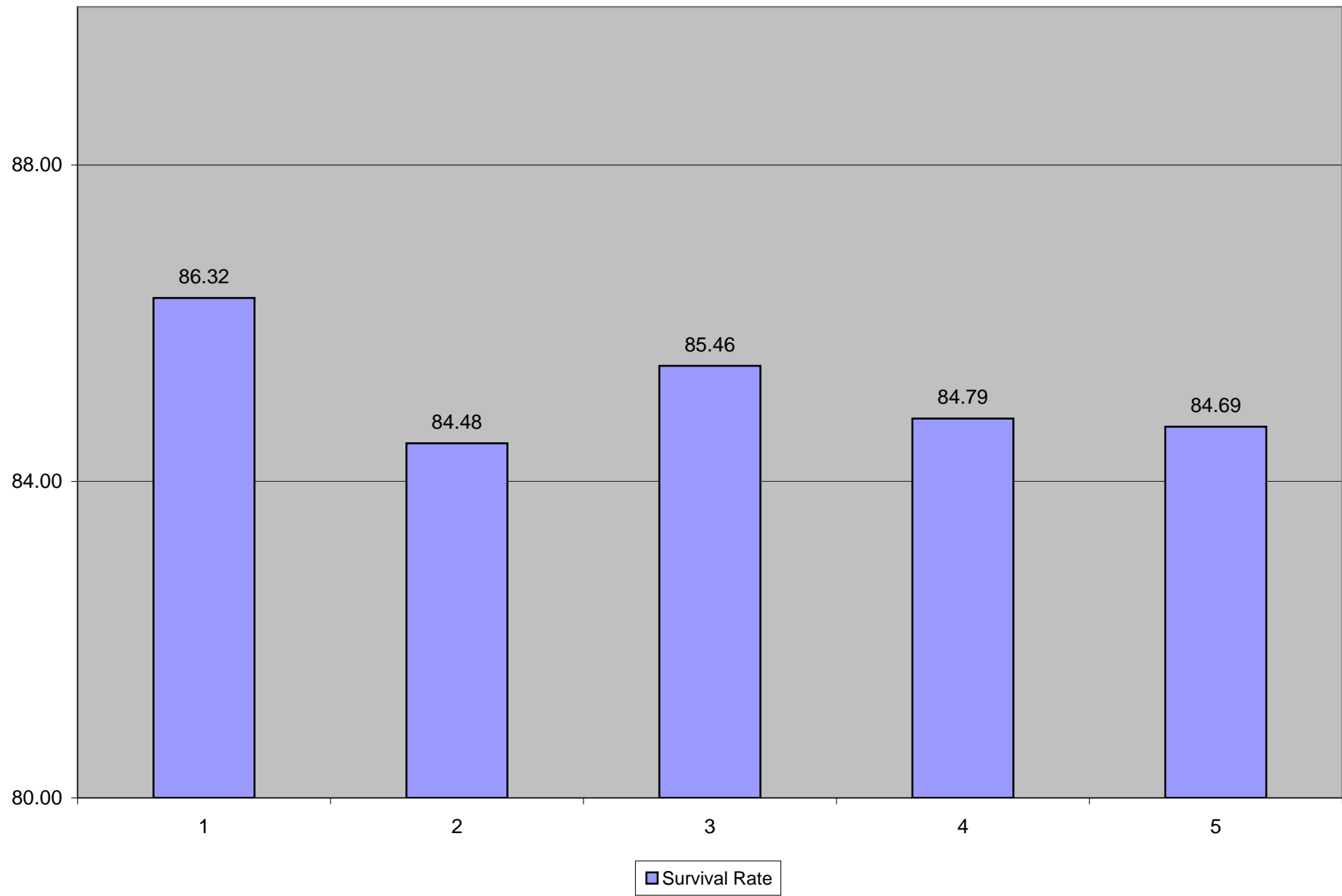
■ Kidney Transplants ■ Pancreas Transplants

Center	Hospital #	Kidney Transplants	Pancreas Transplants	Pan Graft Survival	Sums	Panc %
<b>Group 1</b>						
NEUM	55	108	40	91.67	148	37.04
DCGU	21	46	15	74.07	61	32.61
NHDH	56	41	13	100	54	31.71
MNUM	51	201	57	75.56	258	28.36
INIM	34	247	65	91.67	312	26.32
OHUC	72	62	13	83.26	75	20.97
LAWK	42	51	10	100	61	19.61
VTMC	99	46	9	100	55	19.57
OHCC	69	168	31	76.33	199	18.45
ILSF	31	46	8	100	54	17.39
ILUC	32	104	18	90	122	17.31
TXHH	88	101	17	94.12	118	16.83
TXJS	90	30	5	50	35	16.67
OHOU	71	215	35	83.8	250	16.28
AZMC	3	172	28	87	200	16.28
AZUA	4	80	13	66.67	93	16.25
WIUW	108	326	52	84.32	378	15.95
GAEM	27	163	26	80.8	189	15.95
PAHE	78	32	5	100	37	15.63
IAIV	35	59	9	85.71	68	15.25
FLJM	23	224	32	97.74	256	14.29
<b>Group 2</b>						
FLSL	24	96	13	82.95	109	13.54
PAPT	80	171	23	82.14	194	13.45
COPM	18	69	9	58.33	78	13.04
FLTG	25	214	27	87.69	241	12.62
VAUV	102	111	14	100	125	12.61
KSUK	37	106	13	86.67	119	12.26
WAVM	105	83	10	81.25	93	12.05
ILUI	33	100	12	66.67	112	12.00
ILNM	29	260	31	90.77	291	11.92
NJRW	59	102	12	88.24	114	11.76
NJLL	58	26	3	82.5	29	11.54
NCDU	67	122	14	83.22	136	11.48
CASV	15	140	16	84.62	156	11.43
CASG	11	18	2	60	20	11.11
MABI	46	46	5	85.76	51	10.87
LATU	41	113	12	86.67	125	10.62
SCMU	84	187	19	81.67	206	10.16
PAAG	76	70	7	100	77	10.00
MAUM	47	50	5	100	55	10.00
TXSW	95	41	4	100	45	9.76
UTLD	97	104	10	85	114	9.62
<b>Group 3</b>						
MORH	53	64	6	82.35	70	9.38
TXTX	96	130	12	87.5	142	9.23
ORUO	75	114	10	91.67	124	8.77
WASM	103	69	6	92.36	75	8.70
CAPM	7	220	19	88.89	239	8.64

WISE	106	120	10	61.9	130	8.33
NYBU	61	61	5	100	66	8.20
TXMH	92	124	10	100	134	8.06
TNMH	85	88	7	84.62	95	7.95
CAUC	16	308	24	100	332	7.79
TNVU	86	130	10	94.74	140	7.69
TXSP	94	39	3	50	42	7.69
NCBG	65	183	14	85.2	197	7.65
MIUM	49	250	19	78.79	269	7.60
RIRH	83	40	3	50	43	7.50
CALL	6	134	10	87.45	144	7.46
CASH	12	81	6	75	87	7.41
WISL	107	41	3	100	44	7.32
TXMC	91	96	7	100	103	7.29
NJHK	57	55	4	83.33	59	7.27
COUC	19	126	9	100	135	7.14
GAPH	28	128	9	86.36	137	7.03
<b>Group 4</b>						
NYMS	63	171	12	100	183	7.02
KSFV	36	43	3	100	46	6.98
VAFH	100	101	7	69.23	108	6.93
MIHF	48	102	7	52.29	109	6.86
OKBC	74	62	4	100	66	6.45
CARC	8	31	2	100	33	6.45
NCMH	68	82	5	71.43	87	6.10
NCCM	66	132	8	94.12	140	6.06
OHUH	73	83	5	76.92	88	6.02
WAUW	104	117	7	76.63	124	5.98
KYJH	38	84	5	78.43	89	5.95
AZGS	2	119	7	95.83	126	5.88
NYNY	64	223	13	87.5	236	5.83
MDJH	44	173	10	88.24	183	5.78
LAOF	40	104	6	87.5	110	5.77
NYFL	62	52	3	87.39	55	5.77
TXAS	87	105	6	92.31	111	5.71
PAUP	82	162	9	78.7	171	5.56
KYUK	39	56	3	82.54	59	5.36
MNMC	50	174	9	72.73	183	5.17
ALUA	1	271	14	88.9	285	5.17
<b>Group 5</b>						
MDUM	45	233	12	73.64	245	5.15
CASF	10	360	18	84.83	378	5.00
DCWH	22	103	5	100	108	4.85
MEMC	43	45	2	100	47	4.44
PAGM	77	46	2	79.55	48	4.35
MOSL	54	49	2	90.91	51	4.08
CASD	9	99	4	52.08	103	4.04
FLUF	26	236	9	83.87	245	3.81
NJSB	60	213	8	85.23	221	3.76
PAHM	79	86	3	100	89	3.49
ILPL	30	126	4	88.88	130	3.17

CACS	5	159	5	78.93	164	3.14
MOBH	52	160	5	88.89	165	3.13
CTYN	20	100	3	100	103	3.00
CASU	14	77	2	100	79	2.60
TXHS	89	157	4	100	161	2.55
PATJ	81	83	2	87.5	85	2.41
UTMC	98	53	1	75	54	1.89
VAMC	101	110	2	40	112	1.82
CASM	13	113	2	69.23	115	1.77
CAUH	17	70	1	100	71	1.43

Group #	Survival Rate
1	86.32
2	84.48
3	85.46
4	84.79
5	84.69





0 Hospital #	Kidney Transplants	Pancreas Transplants	Pan Graft Survival	Sums	Panc %	
<b>Group 1</b>						
INIM	34	247	65	91.67	312	26.32
MNUM	51	201	57	75.56	258	28.36
WIUW	108	326	52	84.32	378	15.95
NEUM	55	108	40	91.67	148	37.04
OHOU	71	215	35	83.8	250	16.28
FLJM	23	224	32	97.74	256	14.29
OHCC	69	168	31	76.33	199	18.45
ILNM	29	260	31	90.77	291	11.92
AZMC	3	172	28	87	200	16.28
FLTG	25	214	27	87.69	241	12.62
GAEM	27	163	26	80.8	189	15.95
CAUC	16	308	24	100	332	7.79
PAPT	80	171	23	82.14	194	13.45
SCMU	84	187	19	81.67	206	10.16
CAPM	7	220	19	88.89	239	8.64
MIUM	49	250	19	78.79	269	7.60
ILUC	32	104	18	90	122	17.31
CASF	10	360	18	84.83	378	5.00
TXHH	88	101	17	94.12	118	16.83
CASV	15	140	16	84.62	156	11.43
DCGU	21	46	15	74.07	61	32.61
<b>Group 2</b>						
VAUV	102	111	14	100	125	12.61
NCDU	67	122	14	83.22	136	11.48
NCBG	65	183	14	85.2	197	7.65
ALUA	1	271	14	88.9	285	5.17
NHDH	56	41	13	100	54	31.71
OHUC	72	62	13	83.26	75	20.97
AZUA	4	80	13	66.67	93	16.25
FLSL	24	96	13	82.95	109	13.54
KSUK	37	106	13	86.67	119	12.26
NYNY	64	223	13	87.5	236	5.83
ILUI	33	100	12	66.67	112	12.00
NJRW	59	102	12	88.24	114	11.76
LATU	41	113	12	86.67	125	10.62
TXTX	96	130	12	87.5	142	9.23
NYMS	63	171	12	100	183	7.02
MDUM	45	233	12	73.64	245	5.15
LAWK	42	51	10	100	61	19.61
WAVM	105	83	10	81.25	93	12.05
UTLD	97	104	10	85	114	9.62
ORUO	75	114	10	91.67	124	8.77
WISE	106	120	10	61.9	130	8.33
<b>Group 3</b>						
TXMH	92	124	10	100	134	8.06
TNVU	86	130	10	94.74	140	7.69
CALL	6	134	10	87.45	144	7.46
MDJH	44	173	10	88.24	183	5.78
VTMC	99	46	9	100	55	19.57

IAIV	35	59	9	85.71	68	15.25
COPM	18	69	9	58.33	78	13.04
COUC	19	126	9	100	135	7.14
GAPH	28	128	9	86.36	137	7.03
PAUP	82	162	9	78.7	171	5.56
MNMC	50	174	9	72.73	183	5.17
FLUF	26	236	9	83.87	245	3.81
ILSF	31	46	8	100	54	17.39
NCCM	66	132	8	94.12	140	6.06
NJSB	60	213	8	85.23	221	3.76
PAAG	76	70	7	100	77	10.00
TNMH	85	88	7	84.62	95	7.95
TXMC	91	96	7	100	103	7.29
VAFH	100	101	7	69.23	108	6.93
MIHF	48	102	7	52.29	109	6.86
WAUW	104	117	7	76.63	124	5.98
AZGS	2	119	7	95.83	126	5.88
			<b>Group 4</b>			
MORH	53	64	6	82.35	70	9.38
WASM	103	69	6	92.36	75	8.70
CASH	12	81	6	75	87	7.41
LAOF	40	104	6	87.5	110	5.77
TXAS	87	105	6	92.31	111	5.71
TXJS	90	30	5	50	35	16.67
PAHE	78	32	5	100	37	15.63
MABI	46	46	5	85.76	51	10.87
MAUM	47	50	5	100	55	10.00
NYBU	61	61	5	100	66	8.20
NCMH	68	82	5	71.43	87	6.10
OHUH	73	83	5	76.92	88	6.02
KYJH	38	84	5	78.43	89	5.95
DCWH	22	103	5	100	108	4.85
CACS	5	159	5	78.93	164	3.14
MOBH	52	160	5	88.89	165	3.13
TXSW	95	41	4	100	45	9.76
NJHK	57	55	4	83.33	59	7.27
OKBC	74	62	4	100	66	6.45
CASD	9	99	4	52.08	103	4.04
ILPL	30	126	4	88.88	130	3.17
			<b>Group 5</b>			
TXHS	89	157	4	100	161	2.55
NJLL	58	26	3	82.5	29	11.54
TXSP	94	39	3	50	42	7.69
RIRH	83	40	3	50	43	7.50
WISL	107	41	3	100	44	7.32
KSFV	36	43	3	100	46	6.98
NYFL	62	52	3	87.39	55	5.77
KYUK	39	56	3	82.54	59	5.36
PAHM	79	86	3	100	89	3.49
CTYN	20	100	3	100	103	3.00
CASG	11	18	2	60	20	11.11

CARC	8	31	2	100	33	6.45
MEMC	43	45	2	100	47	4.44
PAGM	77	46	2	79.55	48	4.35
MOSL	54	49	2	90.91	51	4.08
CASU	14	77	2	100	79	2.60
PATJ	81	83	2	87.5	85	2.41
VAMC	101	110	2	40	112	1.82
CASM	13	113	2	69.23	115	1.77
UTMC	98	53	1	75	54	1.89
CAUH	17	70	1	100	71	1.43

Group #	Survival Rate
1	86.02
2	85.09
3	86.09
4	84.96
5	83.55

