

**Michigan Department of Health and Human Services**  
**Integrated Care Division**



**Enrollment Dashboard**  
**October 2017**

# Terminologies and Definitions

## **Passive Eligibility:**

Individuals who meet the full criteria to be passively enrolled into MI Health Link Program

## **Enrollment:**

Individuals currently enrolled in MI Health Link

## **Passive Enrollment:**

An enrollment process through which an eligible individual is enrolled by the MDHHS (or its vendor) into an ICO, following a minimum 60 calendar day advance notification. Eligible individuals are automatically enrolled if they do not chose to opt out of the program

- PACE and MI Choice participants, people with a union or employer sponsored Medicare retirement plan, and those identified as a native American, Alaskan, or migrant are not eligible for passive enrollment
- Effective July 1<sup>st</sup> 2016, MI Care Team Program participants are not eligible for passive enrollment; however, they will be able to voluntarily enroll in MI Health Link

## **LOC (Level of Care):**

State-specific codes that indicate certain level of healthcare service needs

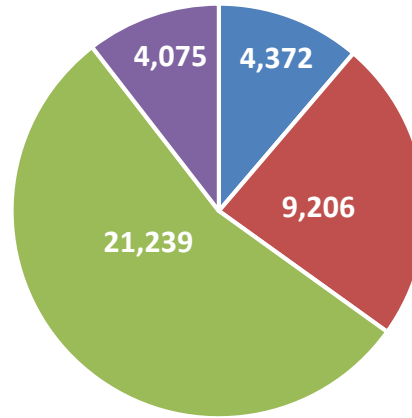
## **Voluntary Disenrollment:**

A beneficiary leaving MI Health Link per the decision of that individual

## **Involuntary Disenrollment:**

A beneficiary leaving MI Health Link per Medicaid criteria

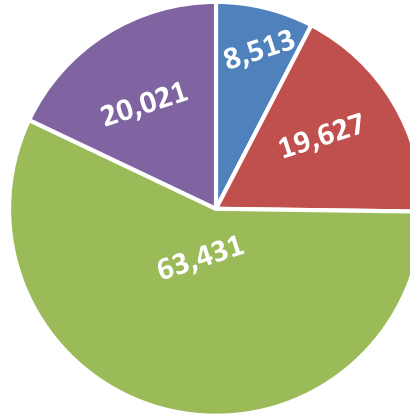
## Enrollment by Region



■ 1 (Upper Peninsula) ■ 4 (Southwest) ■ 7 (Wayne) ■ 9 (Macomb)

Regions	October	September	Difference	Percentage
1 (Upper Peninsula)	4,372	4,372	-	0.00%
4 (Southwest)	9,206	9,183	23	0.25%
7 (Wayne)	21,239	21,260	(21)	-0.10%
9 (Macomb)	4,075	4,047	28	0.69%
Total	38,892	38,862	30	0.08%

## Eligible for Passive Enrollment by Region

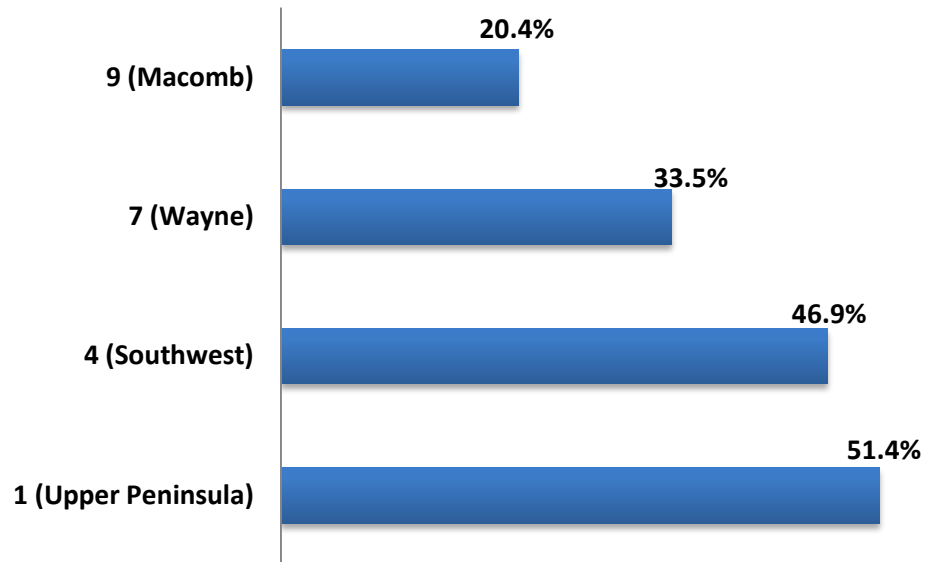


■ 1 (Upper Peninsula) ■ 4 (Southwest) ■ 7 (Wayne) ■ 9 (Macomb)

Regions	October	September	Difference	Percentage
1 (Upper Peninsula)	8,513	8,430	83	1.0%
4 (Southwest)	19,627	19,182	445	2.3%
7 (Wayne)	63,431	61,584	1,847	3.0%
9 (Macomb)	20,021	19,048	973	5.1%
Total	111,592	108,244	3,348	3.1%

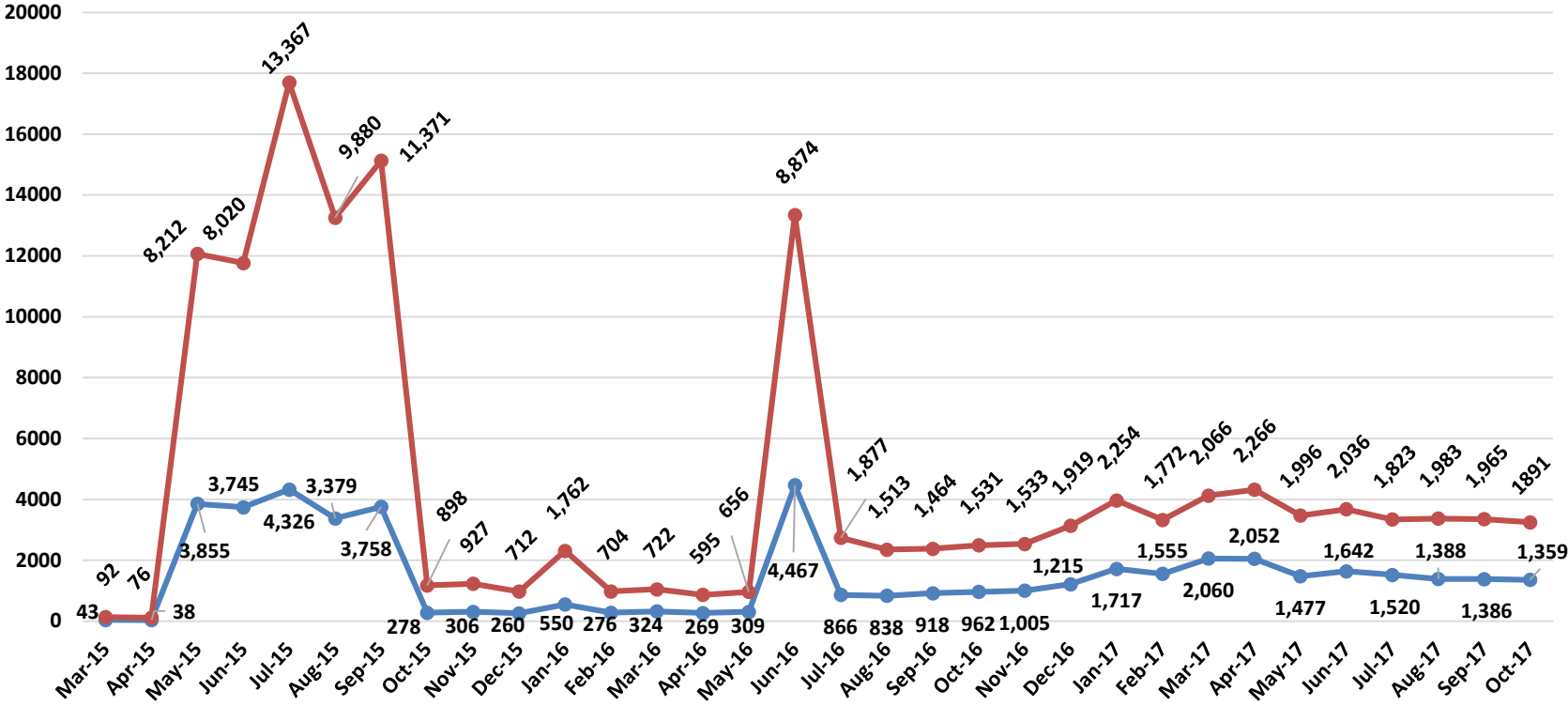
## Percent of Enrolled from Population Eligible

Region	Enrolled (October)	Eligible (October)	Enrolled/Eligible October
1 (Upper Peninsula)	4,372	8,513	51.4%
4 (Southwest)	9,206	19,627	46.9%
7 (Wayne)	21,239	63,431	33.5%
9 (Macomb)	4,075	20,021	20.4%
Total	38,892	111,592	34.9%

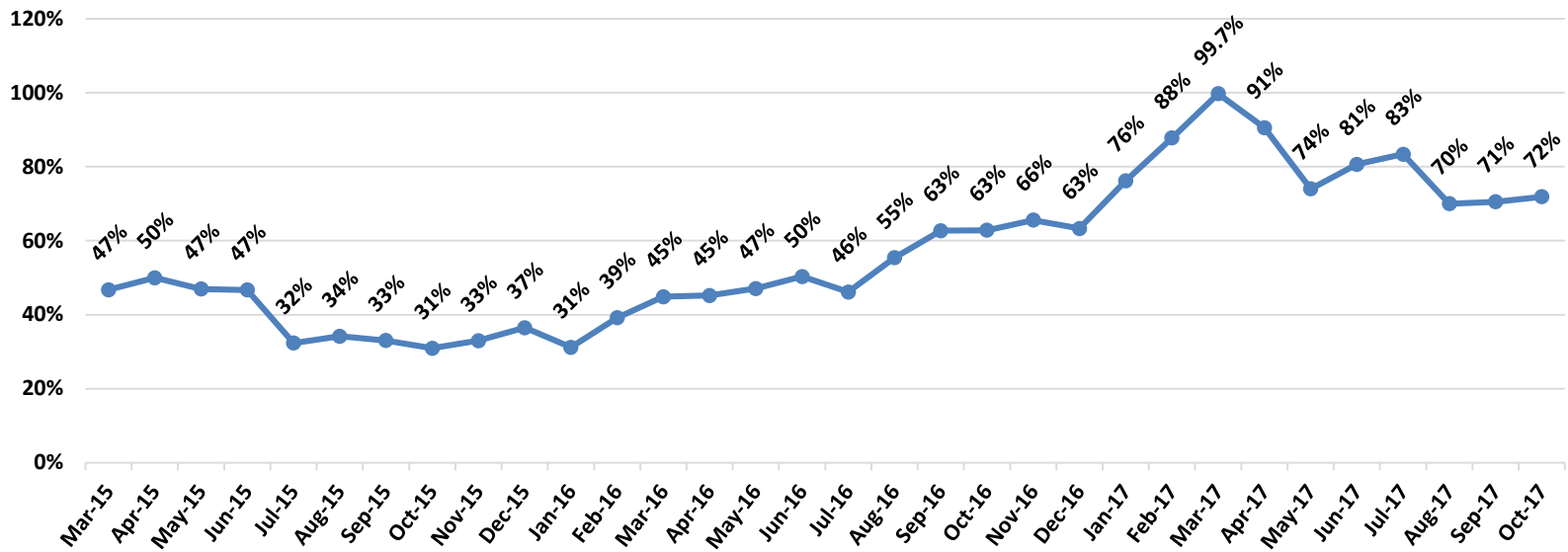


# Enrollment Retention by Month

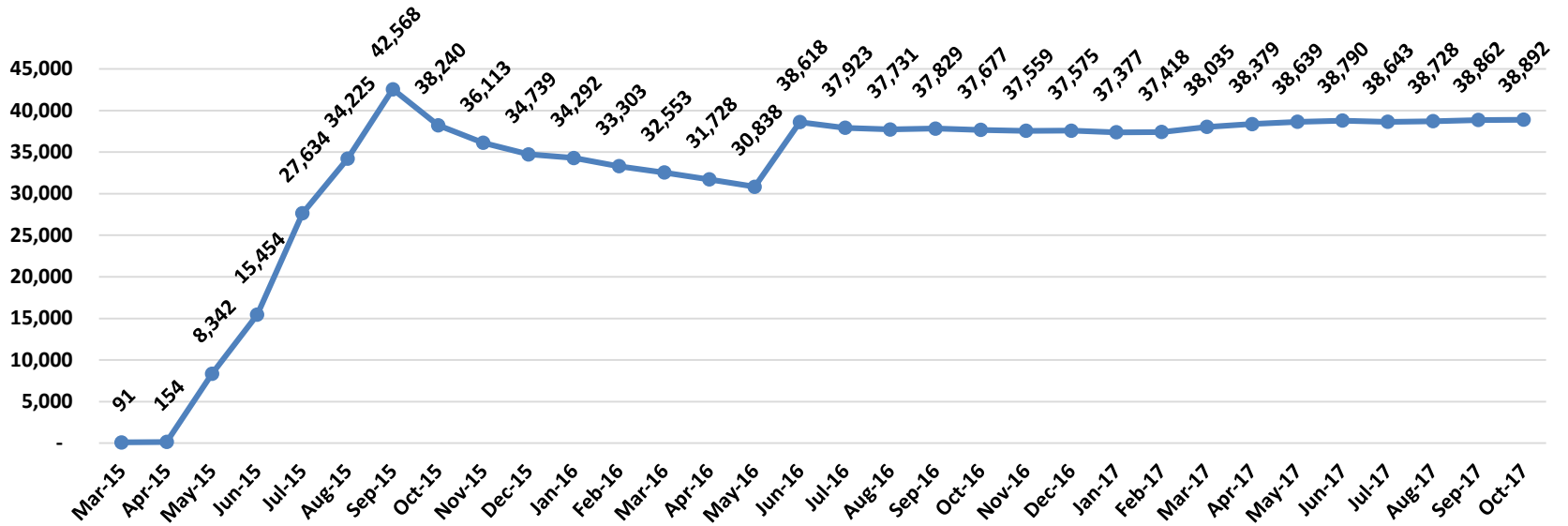
Blue- Current Red- Original



# Enrollment Retention Percentage by Month

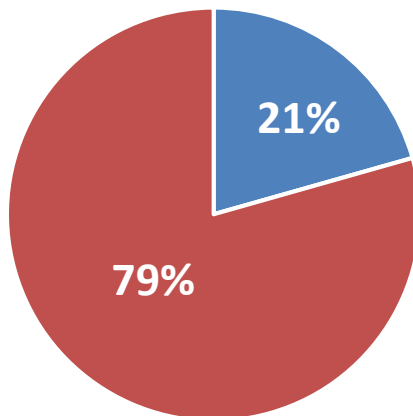


# Enrollment by Month





## Opt-In & Passive Enrollment Percentage



■ Opt-In ■ Passive

October		
	Opt-In	Passive
(1) Upper Peninsula	417	3,955
(4) Southwest	1,516	7,691
(7) Wayne	5,349	15,893
(9) Macomb	1,008	3,093
Total	8,290	30,632

## Enrollment by Level of Care and Region

Region	LOC Categories				
	HCBS	NF	Community	CMCF	Total
1 (Upper Peninsula)	39	281	3,766	196	4,282
4 (Southwest)	55	361	8,555	55	9,026
7 (Wayne)	630	840	18,746	0	20,216
9 (Macomb)	104	293	4,441	3	4,841
October Total	828	1,775	35,508	254	38,365
September Total	805	1,801	35,482	265	38,353
Difference	23	(26)	26	(11)	12
Percentage	2.9%	-1.4%	0.1%	-4.2%	0.0%

**HCBS: Home & Community Based Service Waiver**

**NF: Privately Owned Nursing Facility or Hospital LTC Units**

**CMCF: County Medical Care Facility**

## Enrollment by Level of Care and ICO

ICOs	LOC Categories				
	HCBS	NF	Community	CMCF	October
Aetna	48	339	6,949	24	7,360
AmeriHealth	76	216	2,932	1	3,225
MI Complete Health	187	147	2,055	-	2,389
HAP Midwest	313	217	4,229	-	4,759
Meridian	33	219	5,270	31	5,553
Molina	132	361	10,319	2	10,814
UPHP	39	281	3,767	193	4,280
Total	828	1,780	35,521	251	38,380

**HCBS: Home & Community Based Service Waiver**

**NF: Privately Owned Nursing Facility or Hospital LTC Units**

**CMCF: County Medical Care Facility**

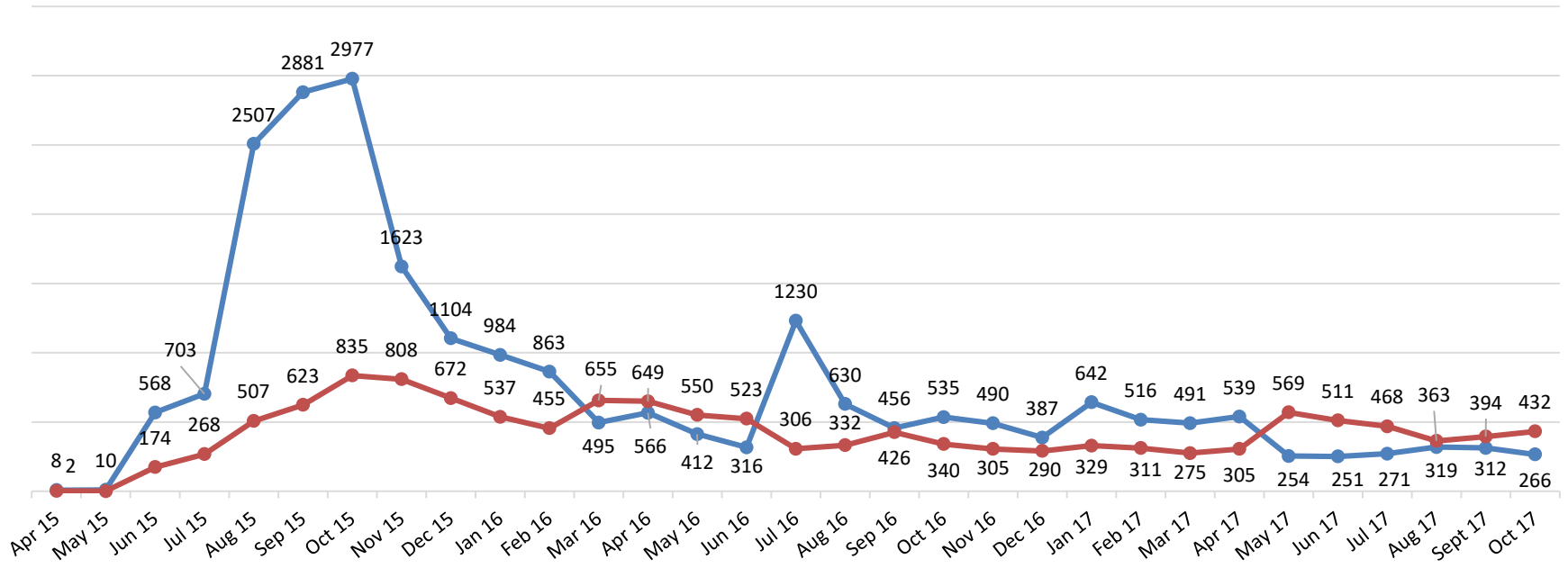
## ICO Enrollment by Region

OCTOBER				
	Region 1	Region4	Region 7	Region 9
<b>UPHP</b>	<b>4283</b>			
<b>Meridian</b>		<b>5535</b>		
<b>Aetna</b>		<b>3488</b>	<b>3163</b>	<b>698</b>
<b>AmeriHealth</b>			<b>2629</b>	<b>583</b>
<b>MI Complete</b>			<b>1978</b>	<b>403</b>
<b>HAP Midwest</b>			<b>3917</b>	<b>829</b>
<b>Molina</b>			<b>9262</b>	<b>1513</b>

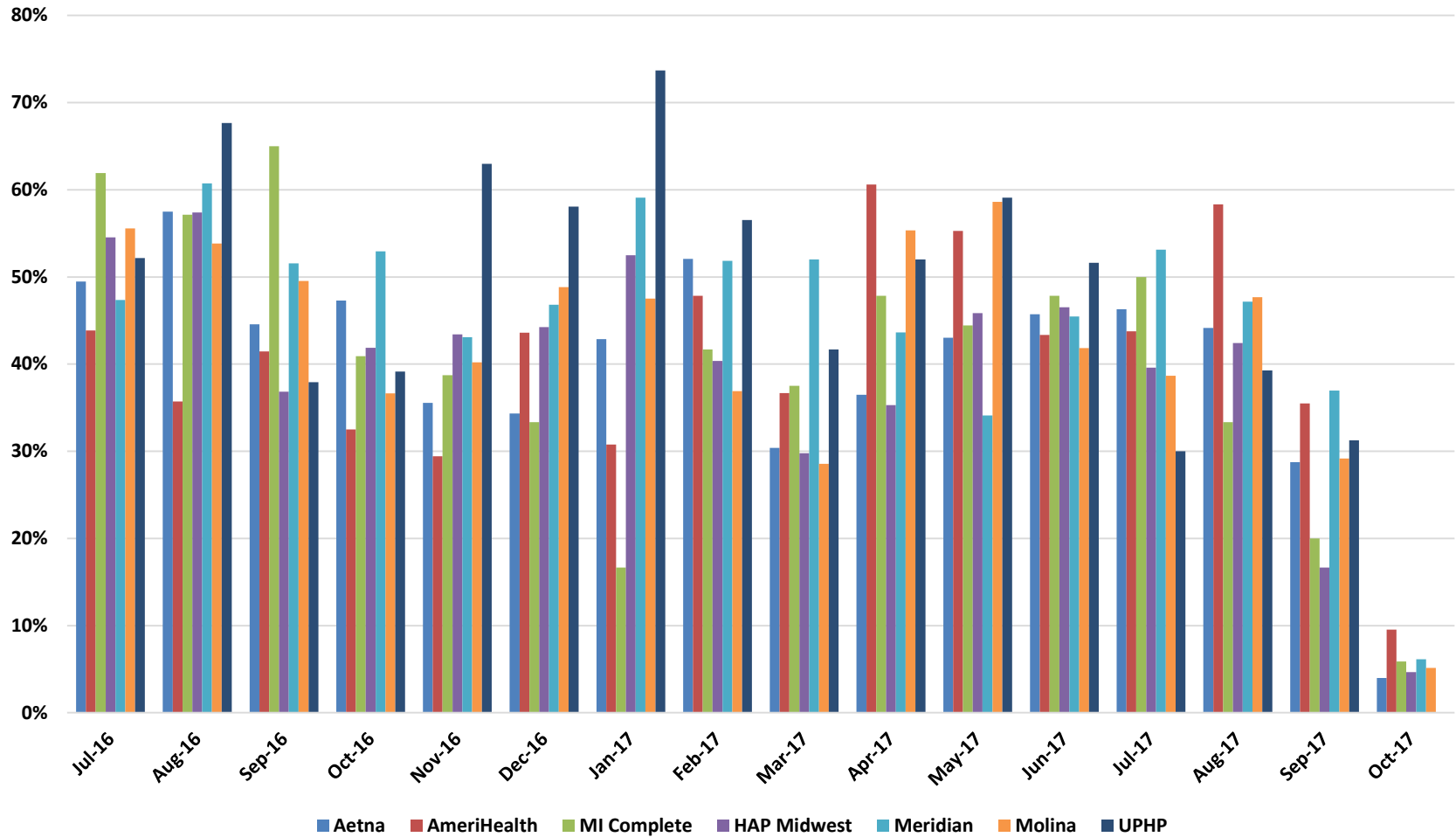
	Region 1	Region4	Region 7	Region 9
<b>UPHP</b>	<b>100%</b>			
<b>Meridian</b>		<b>61%</b>		
<b>Aetna</b>		<b>39%</b>	<b>15%</b>	<b>17%</b>
<b>AmeriHealth</b>			<b>13%</b>	<b>14%</b>
<b>MI Complete</b>			<b>9%</b>	<b>10%</b>
<b>HAP Midwest</b>			<b>19%</b>	<b>21%</b>
<b>Molina</b>			<b>44%</b>	<b>38%</b>

# Disenrollment by Month

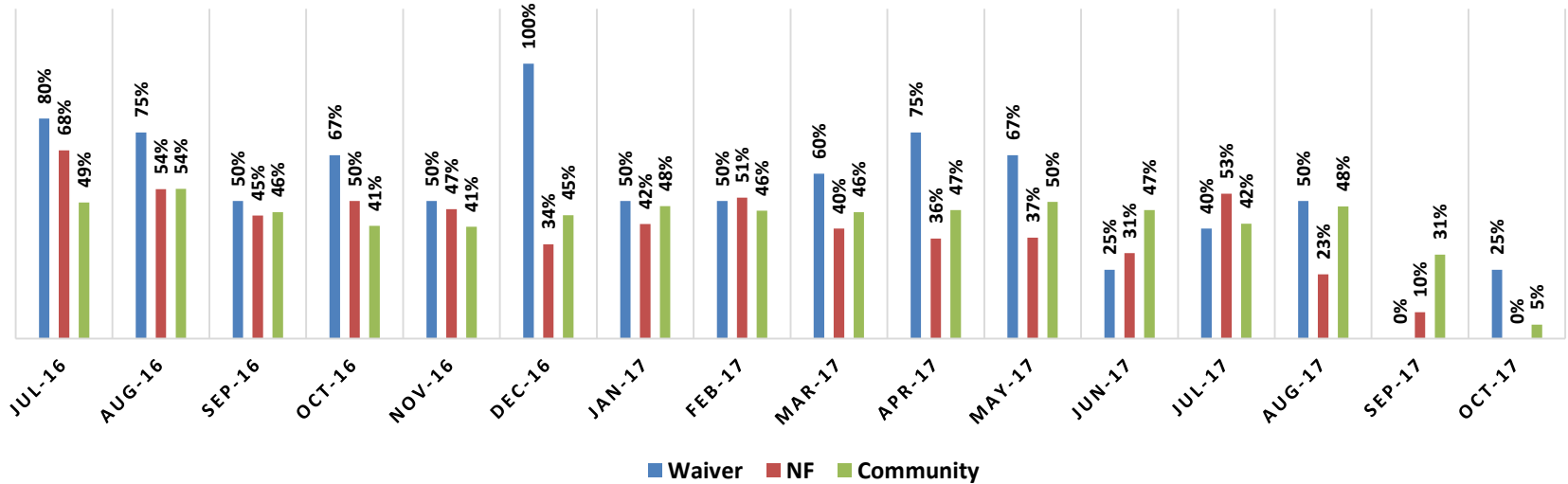
Blue – Voluntary Red- Involuntary



# ICO Deeming Retention Percentage by Month



# ICO Deeming Retention Percentage by LOC and Month



Information provided in the Dashboard is  
based on data available from the MDHHS  
CHAMPS Data Warehouse from  
October 10<sup>th</sup>, 2017