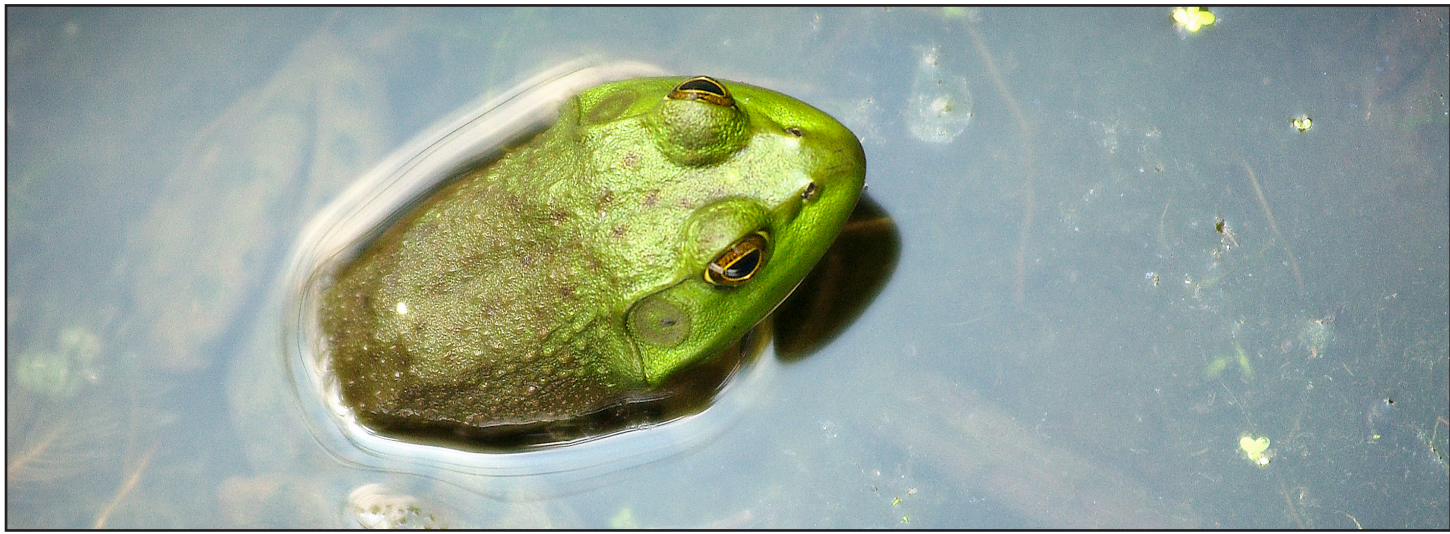


# Is that oil?

**Learn the difference between  
oil and natural sheen on water**



Oil and natural sheen look almost the same when floating on water.

However, when the sheen is disturbed, it becomes easy to tell the difference:

## Oil Sheen



Oil sheen will break apart, but join back together quickly.

## Natural Sheen



Natural sheen will break apart and will stay separate.

To report suspected oil or oil sheen,  
please call: 1-800-306-6837.



Calhoun County Public Health Department  
Environmental Health  
1-269-969-6341



Water Resources Division  
Enbridge Response Unit  
1-269-781-1022

Michigan Department  
of Community Health



Division of Environmental Health  
1-800-648-6942