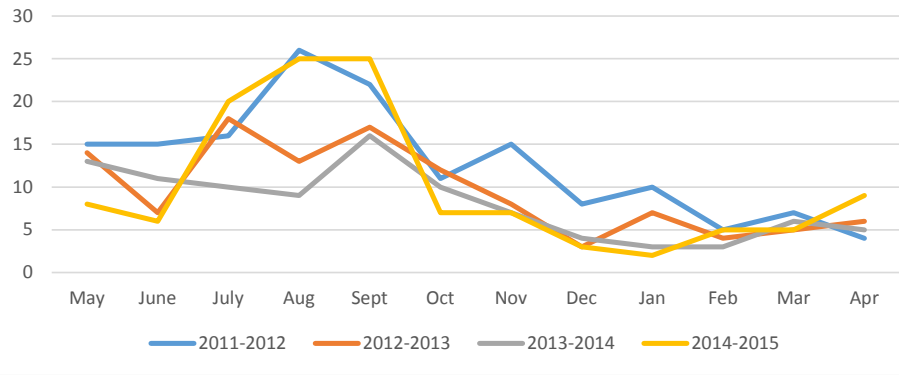
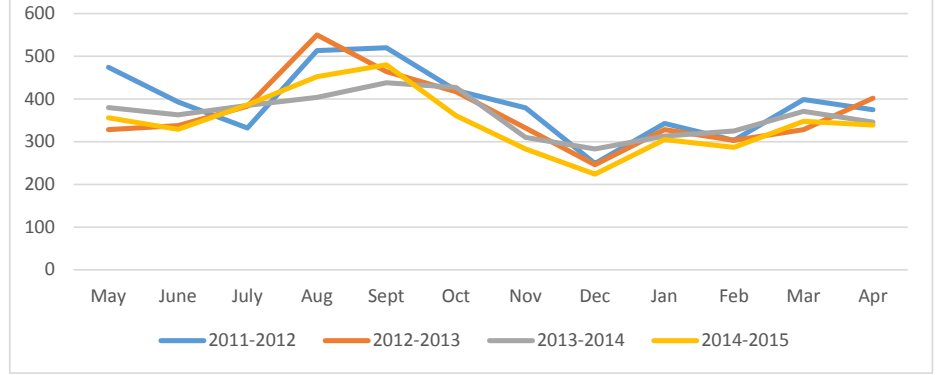


City of Flint, Children less than 16 years of age with First-Time Elevated Blood Lead Levels



City of Flint, Children less than 16 years of age Tested for Lead Poisoning



	May	June	July	Aug	Sept	Oct	Nov	Dec	Jan	Feb	Mar	Apr
2011-2012	15	15	16	26	22	11	15	8	10	5	7	4
2012-2013	14	7	18	13	17	12	8	3	7	4	5	6
2013-2014	13	11	10	9	16	10	7	4	3	3	6	5
2014-2015	8	6	20	25	25	7	7	3	2	5	5	9

	May	June	July	Aug	Sept	Oct	Nov	Dec	Jan	Feb	Mar	Apr
2011-2012	474	393	332	513	520	420	379	249	343	303	399	375
2012-2013	328	338	383	550	464	417	332	246	328	303	328	402
2013-2014	380	363	385	404	438	427	310	283	313	325	371	346
2014-2015	356	329	386	452	480	361	283	224	305	287	348	339