

Michigan Department of Health and Human Services
Integrated Care Division



Enrollment Dashboard
April 2017

Terminologies and Definitions

Passive Eligibility:

Individuals who meet the full criteria to be passively enrolled into MI Health Link Program

Enrollment:

Individuals currently enrolled in MI Health Link

Passive Enrollment:

An enrollment process through which an eligible individual is enrolled by the MDHHS (or its vendor) into an ICO, following a minimum 60 calendar day advance notification. Eligible individuals are automatically enrolled if they do not chose to opt out of the program

- PACE and MI Choice participants, people with a union or employer sponsored Medicare retirement plan, and those identified as a native American, Alaskan, or migrant are not eligible for passive enrollment
- Effective July 1st 2016, MI Care Team Program participants are not eligible for passive enrollment; however, they will be able to voluntarily enroll in MI Health Link

LOC (Level of Care):

State-specific codes that indicate certain level of healthcare service needs

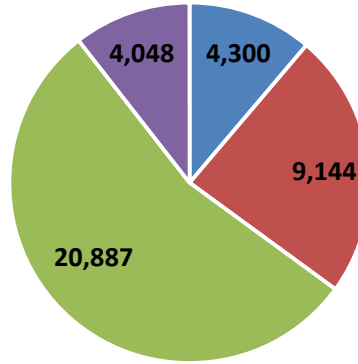
Voluntary Disenrollment:

A beneficiary leaving MI Health Link per the decision of that individual

Involuntary Disenrollment:

A beneficiary leaving MI Health Link per Medicaid criteria

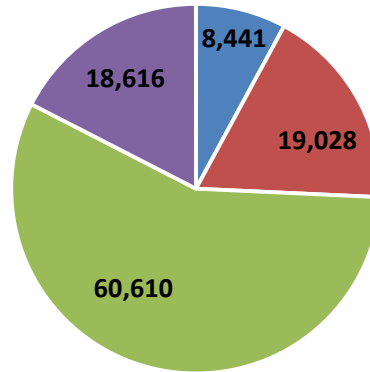
Enrollment by Region



■ 1 (Upper Peninsula) ■ 4 (Southwest) ■ 7 (Wayne) ■ 9 (Macomb)

Regions	April	March	Difference	Percentage
1 (Upper Peninsula)	4,300	4,282	18	0.4%
4 (Southwest)	9,144	9,088	56	0.6%
7 (Wayne)	20,887	20,643	244	1.2%
9 (Macomb)	4,048	4,022	26	0.6%
Total	38,379	38,035	344	0.9%
Percentage = (Difference/March)*100				

Eligible for Passive Enrollment by Region

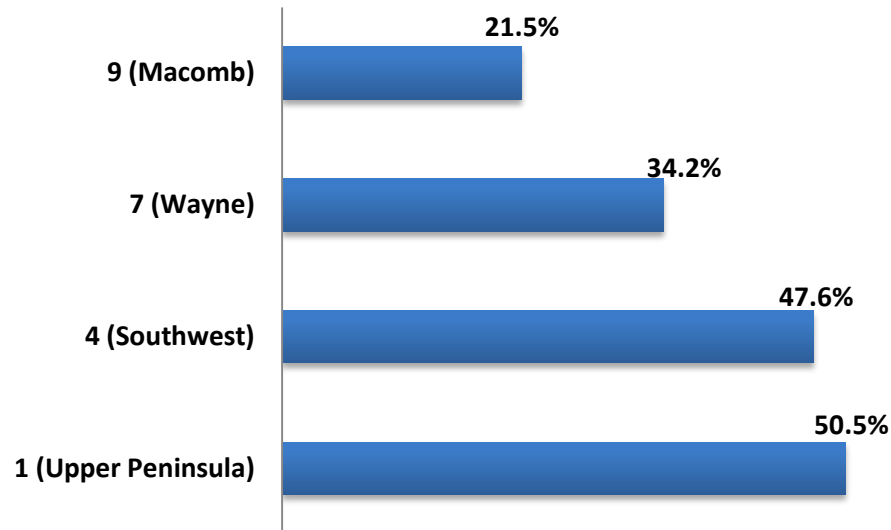


■ 1 (Upper Peninsula) ■ 4 (Southwest) ■ 7 (Wayne) ■ 9 (Macomb)

Regions	April	March	Difference	Percentage
1 (Upper Peninsula)	8,514	8,441	73	0.86%
4 (Southwest)	19,210	19,028	182	0.96%
7 (Wayne)	61,106	60,610	496	0.82%
9 (Macomb)	18,842	18,616	226	1.21%
Total	107,672	106,695	977	0.92%
Percentage = (Difference/March)*100				

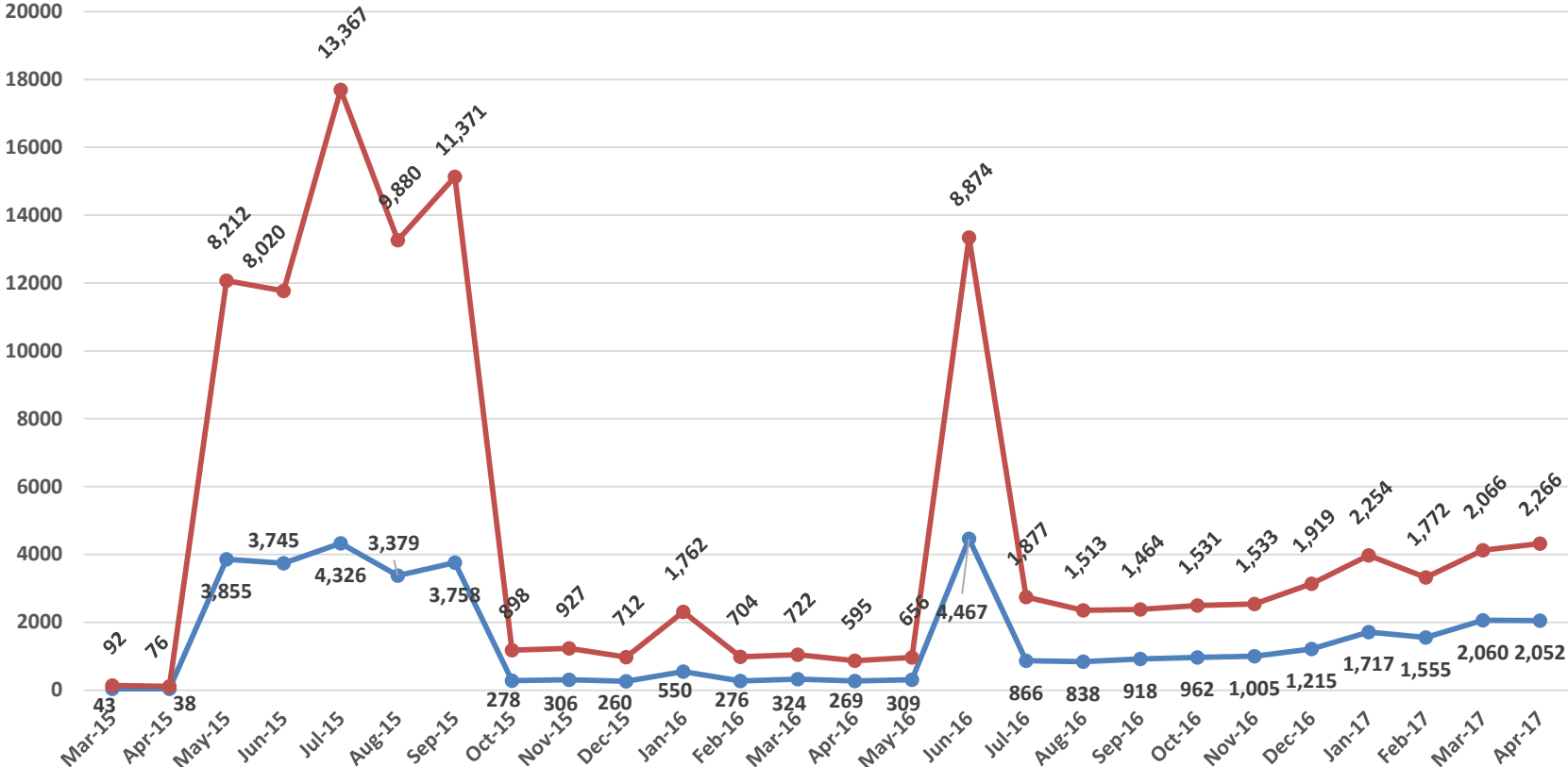
Percent of Enrolled from Population Eligible

April			
Region	Enrolled	Eligible	Enrolled/Eligible
1 (Upper Peninsula)	4,300	8,514	50.5%
4 (Southwest)	9,144	19,210	47.6%
7 (Wayne)	20,887	61,106	34.2%
9 (Macomb)	4,048	18,842	21.5%
Total Average	38,379	107,672	35.6%

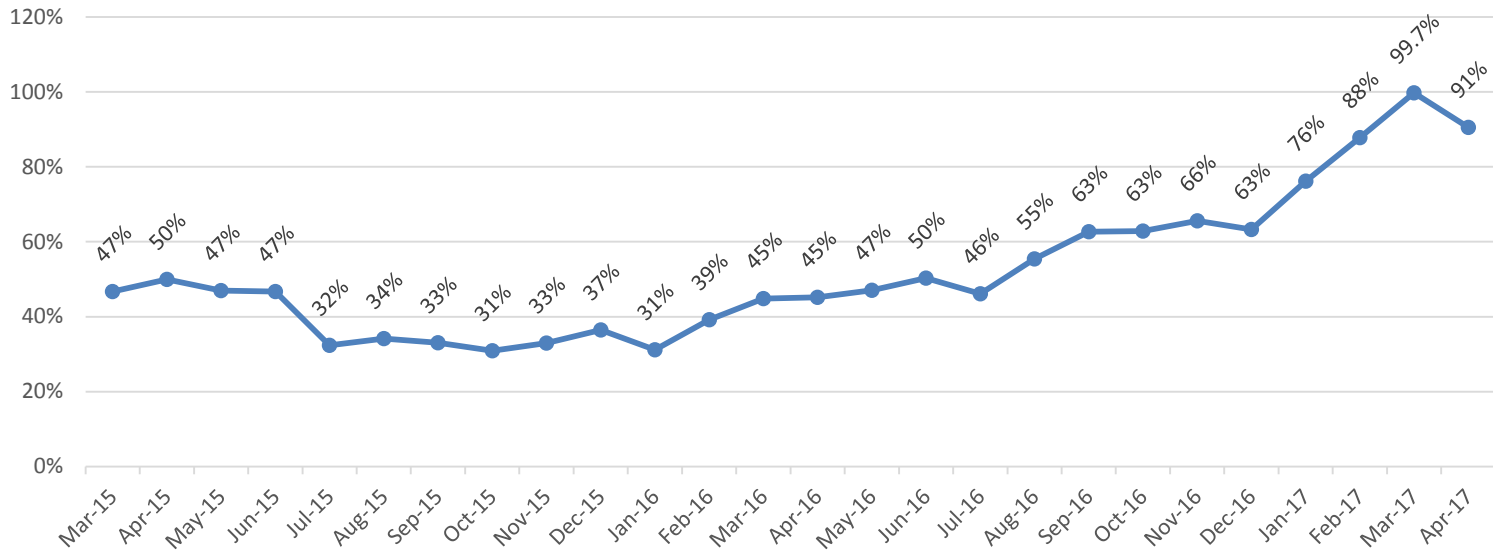


Enrollment Retention by Month

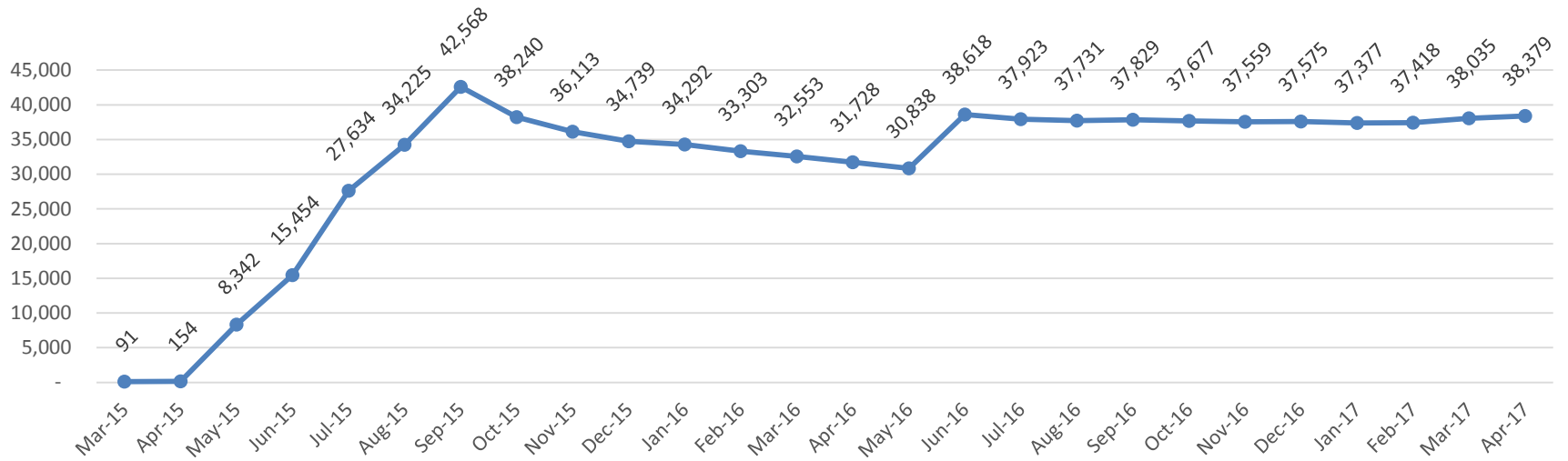
Blue – Current Members Red – Original Members



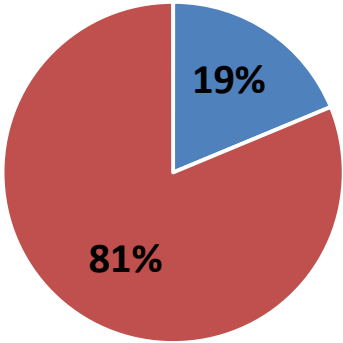
Enrollment Retention Percentage by Month



Enrollment by Month



Opt-In & Passive Enrollment Percentage



■ Opt-In ■ Passive

April		
	Opt-In	Passive
1 (Upper Peninsula)	349	3951
4 (Southwest)	1331	7814
7 (Wayne)	4603	16285
9 (Macomb)	911	3158

Enrollment by Level of Care and Region

Region	LOC Categories				Total
	HCBS	NF	Community	CMCF	
1 (Upper Peninsula)	28	278	3,694	210	4,210
4 (Southwest)	40	397	8,441	49	8,927
7 (Wayne)	495	859	18,463		19,817
9 (Macomb)	77	266	4,390	9	4,742
April Total	640	1,800	34,988	268	37,696
March Total	619	1,810	34,710	252	37,382
Difference	21	(10)	278	16	314
Percentage	3.4%	-0.6%	0.8%	6.3%	0.8%
Percentage = (Difference/March)*100					

HCBS: Home & Community Based Service waiver

NF: Privately Owned Nursing Facility or Hospital LTC Units

CMCF: County Medical Care Facility

Enrollment by Level of Care and ICO

ICOs	LOC Categories				
	HCBS	NF	Community	CMCF	April
Aetna	46	321	6,860	22	7,249
AmeriHealth	45	215	2,937	-	3,197
MI Complete Health	182	112	1,854	1	2,149
HAP Midwest	211	264	4,577	-	5,052
Meridian	14	248	5,204	27	5,493
Molina	114	363	9,875	-	10,352
UPHP	28	279	3,694	203	4,204
Total	640	1,802	35,001	253	37,696

HCBS: Home & Community Based Service waiver

NF: Privately Owned Nursing Facility or Hospital LTC Units

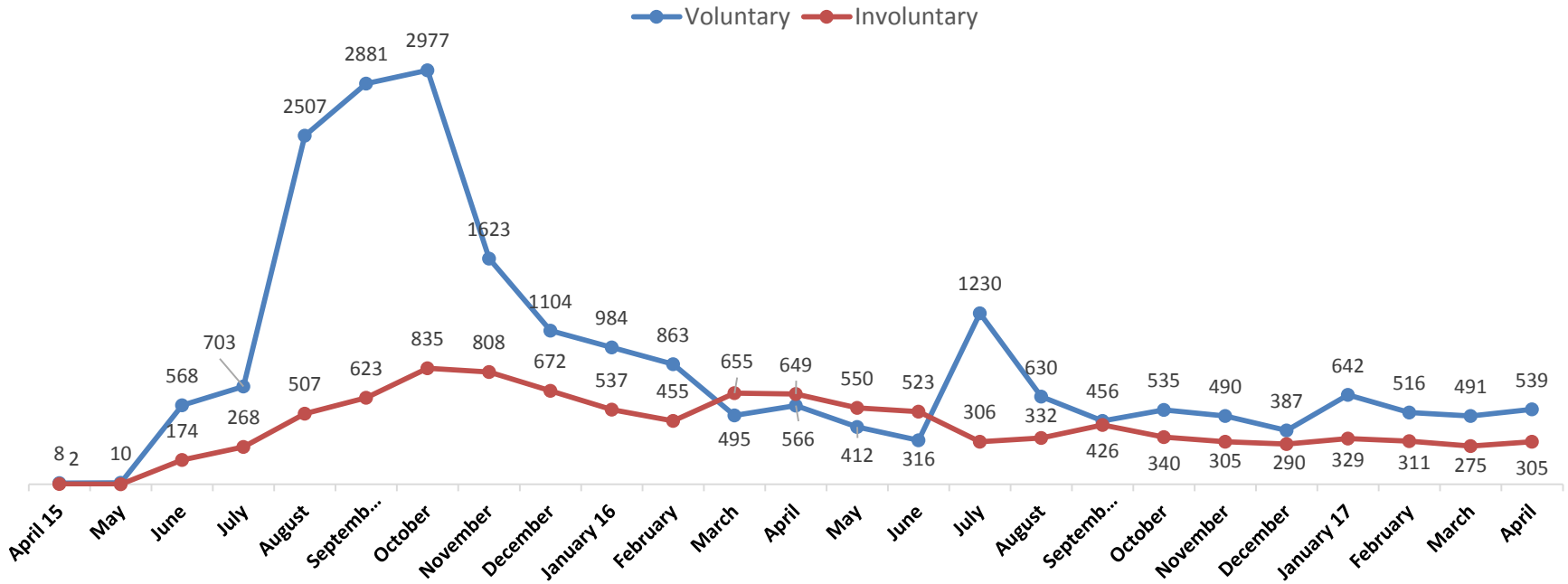
CMCF: County Medical Care Facility

ICO Enrollment by Region

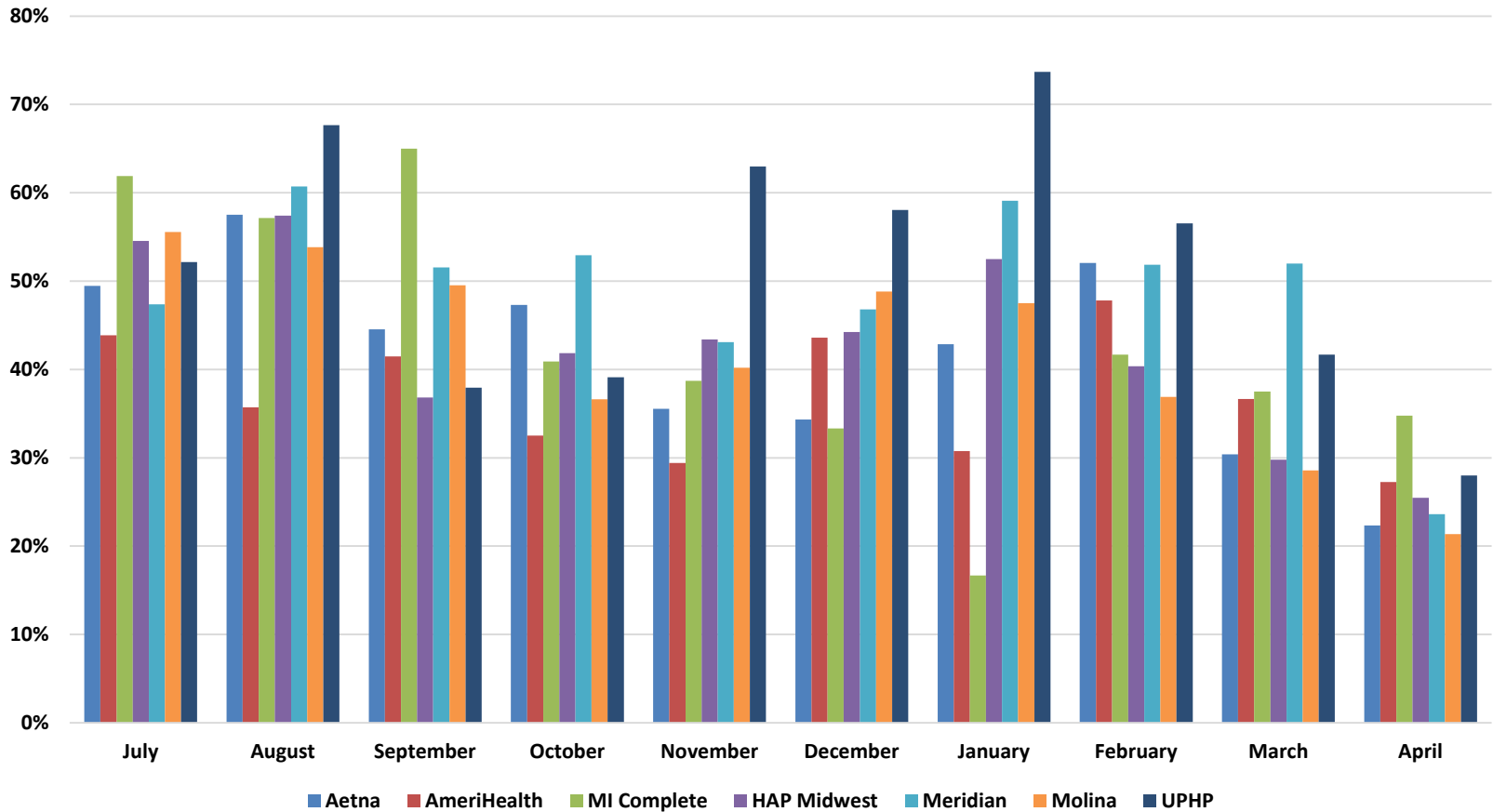
April				
	1 (Upper Peninsula)	4 (Southwest)	7 (Wayne)	9 (Macomb)
UPHP	4255			
Meridian		5576		
Aetna		3520	3153	706
AmeriHealth			2638	616
MI Complete			1823	349
HAP Midwest			4220	900
Molina			9049	1467

	1 (Upper Peninsula)	4 (Southwest)	7 (Wayne)	9 (Macomb)
UPHP	100%			
Meridian		61%		
Aetna		39%	15%	17%
AmeriHealth			13%	15%
MI Complete			9%	9%
HAP Midwest			20%	22%
Molina			43%	36%

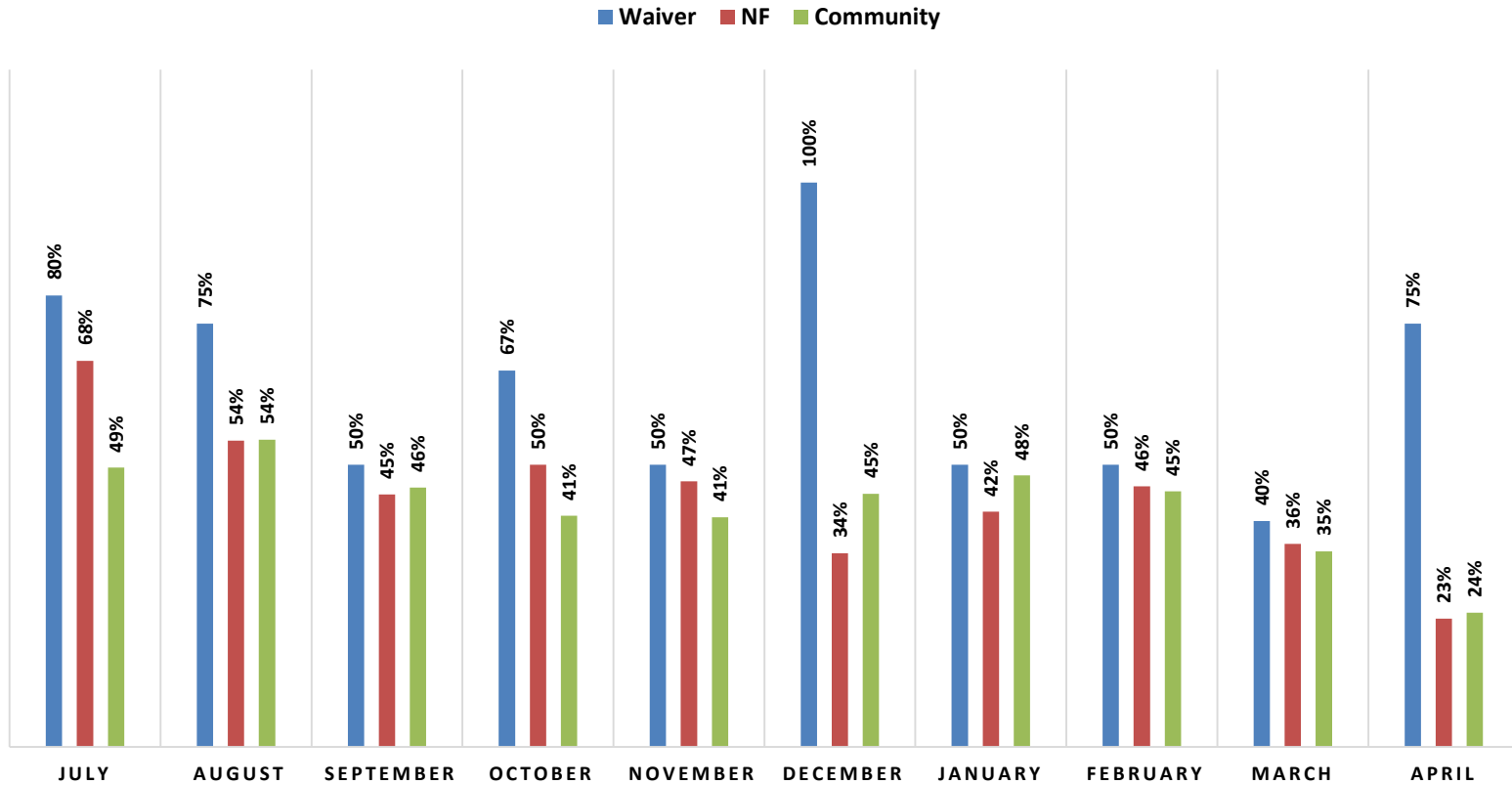
Disenrollment by Month



ICO Deeming Retention Percentage by Month



ICO Deeming Retention Percentage by LOC and Month



Information provided in the Dashboard is based on data available from the MDHHS CHAMPS Data Warehouse from May 8, 2017.