



Michigan Statewide HIV Surveillance Report New Diagnoses and Prevalence Tables

All data as of July 1, 2018



HIV & STD Surveillance & Epidemiology Section
Division of Communicable Disease
Bureau of Disease Control, Prevention and Epidemiology
Michigan Department of Health and Human Services

Lansing - HIV Surveillance Office
333 S. Grand Ave., 3rd Floor
Lansing, MI 48913
517-335-8165

Southfield - HIV Surveillance Office
MDHHS - South Oakland Health Center
27725 Greenfield Rd, Office 57A
Southfield, MI 48076
248-424-7910



www.michigan.gov/hivstd

Michigan's HIV Surveillance Program collects, interprets, and disseminates population level data regarding persons living with HIV (PLWH) and persons at risk of contracting the virus. Since 2001, the program has produced semi-annual reports for a wide audience. Beginning in 2016, these reports were overhauled and split into two parts. "HIV in Michigan, an overview of the epidemic" presents the most relevant information using graphical, user-friendly displays and can be found on our website. To explore current, pressing issues regarding the HIV epidemic, please review that report. This report, "Michigan Statewide HIV Surveillance Report, New Diagnoses and Prevalence Tables", contains the most commonly requested regional data.

The old surveillance reports utilized residence at diagnosis (the CDC standard) and therefore any person diagnosed in Michigan, regardless of their current location, was included. However, due to population changes, as well as the extended lifespan among PLWH, it is more appropriate to include only those currently living in Michigan. Due to differences in the underlying dataset, do not compare any numbers or figures in the new Michigan Statewide HIV Surveillance Report to reports preceding 2016.

Key Definitions

The Basics

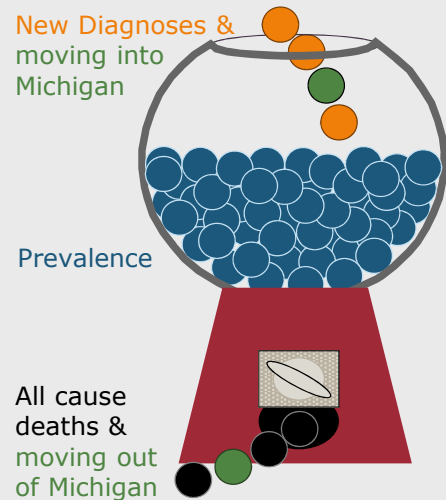
New Diagnoses: The number of cases newly diagnosed over a given period of time, usually a year. In HIV surveillance new diagnoses do not necessarily represent new infections as newly diagnosed persons may have been infected for many years.

Prevalence: The total number of persons currently living with HIV (PLWH).

Reported Prevalence: The number of diagnosed persons who were reported to surveillance.

Estimated Prevalence: The CDC estimates that 13% of PLWH in Michigan are not diagnosed. In other words, the reported prevalence is 87% of the estimated prevalence. When displayed as a number, the estimated prevalence is rounded up to the nearest ten.

HIV Stages: Stage 3 (formally called AIDS) refers to persons with a CD4 count of <200 cells. Once a person progresses to stage 3, the CD4 count may improve, but that person is still categorized as stage 3. Stages 0, 1, or 2 (aka non-stage 3) refer to persons who have never progressed to stage 3.



Linkage, Care, and Viral Suppression

Linked to Care: The proportion of newly diagnosed PLWH who have visited a doctor at least eight days after diagnosis (assessed by CD4, viral load, or genotype test).

In Care: The proportion of PLWH who visit a doctor at least once during a calendar year (assessed by CD4, viral load, or genotype test).

Overview

Community Viral Suppression: The proportion virally suppressed ($\leq 200\text{c/mL}$) out of *all* PLWH. Higher levels of community viral suppression reduce HIV transmission.

Viral Suppression (VS) Rate: The proportion virally suppressed ($\leq 200\text{c/mL}$) out of PLWH *in care*.

Demographics

Race: In this report, persons described as white, Black, Asian/Native Hawaiian/Pacific Islander, or American Indian/Alaska Native are all non-Hispanic/Latinx; persons described as Hispanic may be of any race.

Gender: When available, this report utilizes current gender. When missing, gender is assumed to match sex at birth. Surveillance is aware that transgender persons are underreported and, many times, are categorized as the gender of their birth sex. This is because current gender did not become available for collection until 2010. Michigan surveillance anticipates that the reporting of current gender identity will continue to improve.

Risk Categories and Hierarchy

MSM: Men who have sex with men.

PWID: Persons who inject drugs.

Heterosexual: Males: men who are not MSM or PWID and reported sex with an HIV positive female or a female at risk (includes CDC and HRSA definitions).

Females: females who are not a PWID and reported sex with a male.

Blood Products: Hemophiliacs, blood transfusion recipients, and organ recipients who received blood products prior to 1985 & persons documented to have ever received an infected organ or unit of blood.

Perinatal: HIV transmission from mother to child during birth or through breastfeeding.

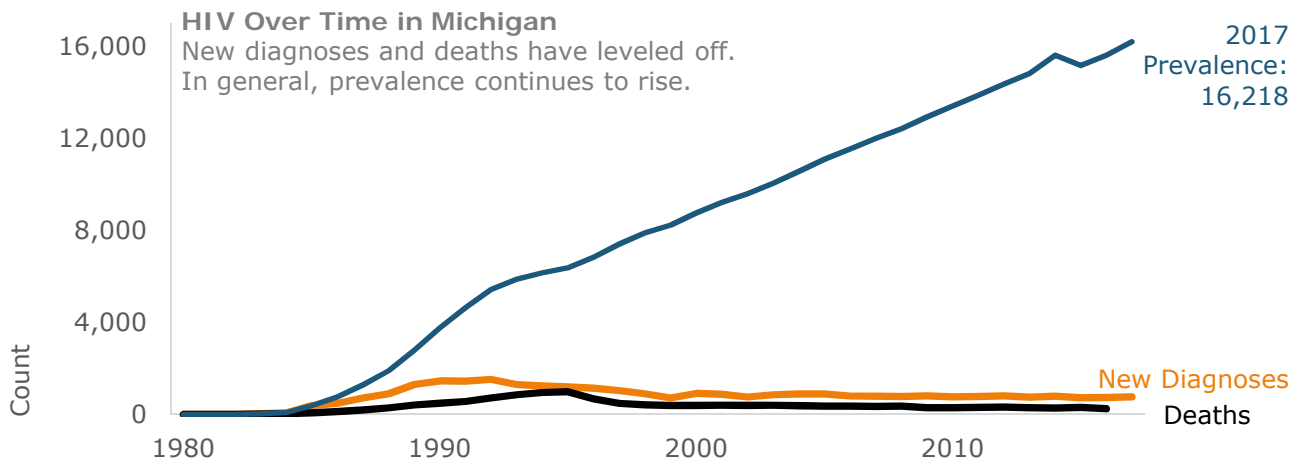


Table 1. New Diagnoses, Deaths, and Prevalence of HIV Infection by Year in Michigan

Year	HIV Infection - All Stages			HIV Stage 3 Infection		
	Diagnoses	Deaths	Prevalence	Diagnoses	Deaths	Prevalence
1981	3	3	0	3	3	0
1982	3	1	2	2	1	1
1983	31	7	26	22	7	16
1984	73	23	76	50	23	43
1985	393	74	395	98	74	67
1986	490	124	761	168	121	114
1987	728	199	1,290	316	191	239
1988	903	289	1,904	485	280	444
1989	1,308	413	2,799	682	403	723
1990	1,459	491	3,767	786	471	1,038
1991	1,447	569	4,645	953	550	1,441
1992	1,525	725	5,445	1,222	694	1,969
1993	1,303	867	5,881	1,111	821	2,259
1994	1,243	955	6,169	994	893	2,360
1995	1,201	981	6,389	1,048	913	2,495
1996	1,135	678	6,846	838	629	2,704
1997	1,046	482	7,410	718	434	2,988
1998	902	412	7,900	627	359	3,256
1999	728	390	8,238	560	337	3,479
2000	917	395	8,760	629	344	3,764
2001	873	408	9,225	545	342	3,967
2002	765	394	9,596	558	334	4,191
2003	864	398	10,062	575	319	4,447
2004	888	372	10,578	542	298	4,691
2005	890	362	11,106	700	296	5,095
2006	802	356	11,552	586	286	5,395
2007	794	342	12,004	551	286	5,660
2008	781	357	12,428	515	289	5,886
2009	811	294	12,945	452	236	6,102
2010	768	295	13,418	491	236	6,357
2011	779	306	13,891	451	241	6,567
2012	800	323	14,368	411	261	6,717
2013	752	287	14,833	430	232	6,915
2014	788	279	15,621	329	211	7,979
2015	726	302	15,180	328	240	8,033
2016	739	243	15,629	352	187	8,252
2017	767	--	16,218	312	--	8,380
Total	30,425	13,396		19,440	11,842	

The reported prevalence of HIV infection in Michigan on January 1, 2018 was 16,218 cases. The prevalence of stage 3 HIV infection, which is a subset of the overall HIV infection prevalence, was 8,380 cases. The HIV infection columns display data on all persons with HIV, including those with stage 3.

The number of reported deaths include those directly attributable to the presence of HIV infection as well as those due to other causes. Reported deaths for the most recent year is incomplete.

on January 1, 2018

Table 2. Demographic Information of Michigan Residents Living with HIV

Demographic Group	Estimated Prevalence	Reported HIV Infection							2017 Census Estimates	
		Non Stage 3		Stage 3		Total			Count	%
		Count	%	Count	%	Count	%	Rate per 100,000		
Total	18,650	7,838	100%	8,380	100%	16,218	100%	162.8	9,962,309	100%
Race/Ethnicity										
Black	10,440	4,383	56%	4,690	56%	9,073	56%	659.2	1,376,455	14%
Hispanic	1,070	453	6%	474	6%	927	6%	183.6	504,857	5%
White	6,370	2,672	34%	2,861	34%	5,533	34%	73.9	7,488,326	75%
Other	790	330	4%	355	4%	685	4%	115.6	592,671	6%
Asian/NH/PI	180	93	1%	58	<1%	151	<1%	47.4	318,514	3%
Am Indian/AN	40	19	<1%	12	<1%	31	<1%	54.5	56,869	<1%
Multi/Other	580	218	3%	285	3%	503	3%	231.5	217,288	2%
Gender & Race										
Male	14,550	6,070	77%	6,580	79%	12,650	78%	258.0	4,903,750	49%
Black	7,550	3,181	41%	3,378	40%	6,559	40%	1,003.6	653,538	7%
Hispanic	870	370	5%	386	5%	756	5%	294.6	256,593	3%
White	5,540	2,277	29%	2,535	30%	4,812	30%	130.0	3,702,064	37%
Other	610	242	3%	281	3%	523	3%	179.4	291,555	3%
Female	3,890	1,661	21%	1,721	21%	3,382	21%	66.9	5,058,559	51%
Black	2,730	1,115	14%	1,251	15%	2,366	15%	327.3	722,917	7%
Hispanic	190	80	1%	85	1%	165	1%	66.5	248,264	2%
White	810	381	5%	315	4%	696	4%	18.4	3,786,262	38%
Other	180	85	1%	70	<1%	155	<1%	51.5	301,116	3%
Transgender	220	107	1%	79	<1%	186	1%	--	N/A	N/A
Black	180	87	1%	61	<1%	148	<1%	--	N/A	N/A
Hispanic	10	3	<1%	3	<1%	6	<1%	--	N/A	N/A
White	30	14	<1%	11	<1%	25	<1%	--	N/A	N/A
Other	10	3	<1%	4	<1%	7	<1%	--	N/A	N/A
Risk										
MSM*	10,120	4,411	56%	4,386	52%	8,797	54%	3,093.0	284,418	3%
PWID	1,180	347	4%	674	8%	1,021	6%	--	N/A	N/A
MSM/PWID	700	270	3%	338	4%	608	4%	--	N/A	N/A
Heterosexual	3,580	1,476	19%	1,637	20%	3,113	19%	--	N/A	N/A
Males	820	304	4%	406	5%	710	4%	--	N/A	N/A
Females	2,770	1,172	15%	1,231	15%	2,403	15%	--	N/A	N/A
Blood Products	70	19	<1%	36	<1%	55	<1%	--	N/A	N/A
Perinatal	250	134	2%	81	<1%	215	1%	--	N/A	N/A
Undetermined	2,780	1,181	15%	1,228	15%	2,409	15%	--	N/A	N/A
Current Age (in years)**										
0-12	100	70	<1%	12	<1%	82	<1%	9.3	884,382	9%
13-19	230	164	2%	32	<1%	196	1%	20.2	972,440	10%
20-24	990	689	9%	170	2%	859	5%	122.2	702,672	7%
25-29	1,930	1,205	15%	471	6%	1,676	10%	247.9	676,087	7%
30-39	3,470	1,771	23%	1,241	15%	3,012	19%	254.1	1,185,193	12%
40-49	4,280	1,589	20%	2,132	25%	3,721	23%	308.6	1,205,811	12%
50-59	5,210	1,658	21%	2,868	34%	4,526	28%	322.0	1,405,472	14%
60+	2,470	690	9%	1,454	17%	2,144	13%	73.2	2,930,259	29%

*MSM Census estimate is 5.8% of the male population in Michigan (Lieb S, et al 2011. Statewide Estimation of Racial/Ethnic Populations of Men Who Have Sex with Men in the U.S.)

**Two people have unknown age and are not included in the current age breakdown

on January 1, 2018

Table 3. Demographic Information and Care and Viral Suppression (VS) Rates of Michigan Residents Living with HIV

Gender & Race/Risk	Current Age														
	<13 yrs			13-19			20-24			25-29			30-39		
	Count	Care Rate	VS Rate	Count	Care Rate	VS Rate	Count	Care Rate	VS Rate	Count	Care Rate	VS Rate	Count	Care Rate	VS Rate
Total	82	89%	99%	196	86%	85%	859	78%	80%	1,676	78%	81%	3,012	80%	84%
Male	41	85%	97%	142	88%	83%	734	78%	81%	1,396	77%	82%	2,266	80%	86%
Race															
Black	28	86%	96%	103	83%	80%	550	79%	79%	1,020	76%	79%	1,268	77%	81%
Hispanic	3	.	.	7	.	.	42	67%	90%	80	76%	94%	175	74%	91%
White	5	.	.	19	100%	79%	110	83%	87%	241	80%	93%	715	87%	92%
Other	5	.	.	13	100%	90%	32	64%	83%	55	86%	83%	108	79%	88%
Risk															
MSM	N/A	N/A	N/A	92	92%	86%	631	80%	81%	1,170	79%	83%	1,805	83%	86%
PWID	N/A	N/A	N/A	0	.	.	4	.	.	13	70%	100%	29	71%	85%
Heterosexual	N/A	N/A	N/A	1	.	.	15	82%	89%	36	69%	85%	96	73%	77%
Other/Unk	41	85%	97%	49	84%	78%	84	68%	75%	177	61%	73%	336	68%	87%
Female	41	93%	100%	51	80%	92%	95	77%	73%	237	82%	78%	696	79%	79%
Race															
Black	28	93%	100%	37	78%	88%	64	74%	71%	166	82%	75%	452	80%	78%
Hispanic	3	.	.	6	.	.	1	.	.	15	100%	86%	40	68%	83%
White	3	.	.	4	.	.	25	89%	76%	42	70%	88%	165	80%	82%
Other	7	.	.	4	.	.	5	.	.	14	93%	77%	39	79%	83%
Risk															
PWID	N/A	N/A	N/A	0	.	.	2	.	.	12	83%	100%	49	80%	54%
Heterosexual	N/A	N/A	N/A	11	80%	75%	65	76%	73%	165	84%	80%	552	80%	81%
Other/Unk	41	93%	100%	40	80%	94%	28	78%	70%	60	78%	70%	95	73%	80%
Transgender	0	.	.	3	.	.	30	67%	80%	43	83%	73%	50	82%	71%
Race															
Black	0	.	.	3	.	.	27	70%	80%	35	85%	71%	39	80%	63%
Hispanic	0	.	.	0	.	.	0	.	.	1	.	.	4	.	.
White	0	.	.	0	.	.	3	.	.	3	.	.	6	.	.
Other	0	.	.	0	.	.	0	.	.	4	.	.	1	.	.
Risk															
Sex with Male	N/A	N/A	N/A	3	.	.	30	67%	80%	43	83%	73%	48	83%	74%
Other/Unk	0	.	.	0	.	.	0	.	.	0	.	.	2	.	.



Continued on Next Page



Care and VS rates not shown for frequencies <10

on January 1, 2018

Table 3. Demographic Information and Care and Viral Suppression (VS) Rates of Michigan Residents Living with HIV (continued)

Gender & Race/Risk	Current Age									Total*		
	40-49			50-59			60+			Count	Care Rate	VS Rate
	Count	Care Rate	VS Rate	Count	Care Rate	VS Rate	Count	Care Rate	VS Rate	Count	Care Rate	VS Rate
Total	3,721	82%	89%	4,526	84%	92%	2,144	84%	95%	16,216	82%	89%
Male	2,727	83%	91%	3,638	84%	93%	1,706	84%	95%	12,650	82%	90%
Race												
Black	1,265	82%	86%	1,564	82%	89%	761	80%	92%	6,559	80%	85%
Hispanic	206	70%	97%	177	77%	95%	66	80%	94%	756	75%	94%
White	1,128	86%	94%	1,757	85%	95%	837	89%	97%	4,812	86%	95%
Other	128	83%	91%	140	88%	90%	42	93%	92%	523	84%	89%
Risk												
MSM	1,950	86%	91%	2,531	87%	93%	1,081	88%	96%	9,260	85%	90%
PWID	74	76%	81%	229	78%	87%	245	72%	89%	594	75%	87%
Heterosexual	203	73%	86%	252	79%	90%	106	81%	91%	709	77%	87%
Other/Unk	500	75%	91%	626	75%	92%	274	81%	95%	2,087	74%	89%
Female	964	80%	85%	868	83%	91%	428	82%	94%	3,380	81%	86%
Race												
Black	693	80%	84%	604	81%	90%	321	82%	93%	2,365	81%	85%
Hispanic	52	90%	86%	33	82%	93%	15	80%	100%	165	82%	89%
White	185	81%	87%	197	87%	94%	74	84%	98%	695	82%	89%
Other	34	67%	100%	34	88%	86%	18	89%	92%	155	82%	88%
Risk												
PWID	101	77%	76%	154	74%	87%	107	77%	94%	425	76%	83%
Heterosexual	716	84%	87%	597	88%	92%	267	85%	95%	2,373	84%	87%
Other/Unk	147	64%	82%	117	70%	91%	54	83%	93%	582	74%	85%
Transgender	30	96%	92%	20	95%	94%	10	90%	78%	186	84%	79%
Race												
Black	25	95%	89%	15	93%	93%	4	.	.	148	83%	77%
Hispanic	1	.	.	0	.	.	0	.	.	6	.	.
White	3	.	.	5	.	.	5	.	.	25	86%	94%
Other	1	.	.	0	.	.	1	.	.	7	.	.
Risk												
Sex with Male	26	95%	90%	17	94%	93%	8	.	.	175	84%	79%
Other/Unk	4	.	.	3	.	.	2	.	.	11	82%	89%

Virally suppressed individuals have a better prognosis and are less likely to transmit the virus compared to unsuppressed individuals. Receiving routine care is the first step in achieving viral suppression (VS). The following groups struggle to obtain care, achieve VS, or both:

Latinos (Hispanic men) have low care rates (7% below the state average), but those who are in care are extremely likely to be VS.

Other groups frequently not in care are PWID (all men, and women over 40), heterosexual men 25-49, and all 20-29 year olds.

All 20-39 year olds achieve VS at a low rate, as do 13-19 year old men.

*One black and one white female have unknown ages and are not included in this table; Care and VS rates not shown for frequencies <10

on January 1, 2018

Table 4. Current Residence of Persons Living with HIV in Michigan

Current County of Residence	Estimated Prevalence	Reported HIV Infection			Rate per 100,000	2017 Census Estimates
		Non Stage 3	Stage 3	Total		
Total	18,650	7,838	8,380	16,218	162.8	9,962,309
Detroit Metro Area	11,950	4,974	5,410	10,384	243.0	4,273,000
Lapeer Co.	60	23	24	47	53.3	88,174
Macomb Co.	1,330	597	557	1,154	132.4	871,375
Monroe Co.	130	51	54	105	70.2	149,649
Oakland Co.	2,390	1,026	1,045	2,071	165.6	1,250,836
St. Clair Co.	130	63	49	112	70.3	159,350
Wayne Co.: excl Detroit	2,370	1,004	1,053	2,057	190.4	1,080,512
Detroit	5,570	2,210	2,628	4,838	718.8	673,104
Out-state	6,620	2,819	2,937	5,756	101.2	5,689,309
Alcona Co.	10	0	2	2	--	10,351
Alger Co.	10	1	5	6	--	9,121
Allegan Co.	160	61	73	134	115.1	116,447
Alpena Co.	20	2	11	13	45.7	28,462
Antrim Co.	20	6	8	14	60.1	23,292
Arenac Co.	10	1	5	6	--	15,045
Baraga Co.	20	7	3	10	118.5	8,441
Barry Co.	30	10	11	21	34.7	60,586
Bay Co.	110	49	39	88	84.4	104,239
Benzie Co.	10	0	6	6	--	17,573
Berrien Co.	280	109	129	238	154.3	154,259
Branch Co.	40	16	11	27	62.2	43,410
Calhoun Co.	220	87	103	190	141.7	134,128
Cass Co.	30	9	14	23	44.8	51,381
Charlevoix Co.	20	5	5	10	38.3	26,139
Cheboygan Co.	20	6	9	15	59.1	25,369
Chippewa Co.	40	17	12	29	76.9	37,711
Clare Co.	50	12	23	35	114.2	30,653
Clinton Co.	50	20	22	42	53.5	78,443
Crawford Co.	10	0	3	3	--	13,907
Delta Co.	30	9	10	19	52.8	35,965
Dickinson Co.	10	2	3	5	--	25,415
Eaton Co.	100	38	46	84	77.0	109,027
Emmet Co.	20	8	6	14	42.2	33,193
Genesee Co.	660	285	281	566	138.9	407,385
Gladwin Co.	10	3	4	7	--	25,234
Gogebic Co.	20	5	5	10	65.2	15,342
Grand Traverse Co.	90	37	41	78	85.0	91,807
Gratiot Co.	30	11	15	26	63.4	41,018
Hillsdale Co.	20	5	12	17	37.1	45,879
Houghton Co.	20	7	10	17	46.8	36,305
Huron Co.	10	3	5	8	--	31,280
Ingham Co.	520	218	230	448	154.4	290,186
Ionia Co.	60	19	31	50	77.8	64,291

Continued on Next Page ↓

on January 1, 2018

Table 4. Current Residence of Persons Living with HIV in Michigan (continued)

Current County of Residence	Estimated Prevalence	Reported HIV Infection			Rate per 100,000	2017 Census Estimates
		Non Stage 3	Stage 3	Total		
Out-state (cntd)						
Iosco Co.	20	4	8	12	47.7	25,162
Iron Co.	10	3	1	4	--	11,124
Isabella Co.	60	30	19	49	69.0	71,063
Jackson Co.	260	103	115	218	137.4	158,640
Kalamazoo Co.	420	184	179	363	138.0	262,985
Kalkaska Co.	20	8	2	10	56.7	17,634
Kent Co.	1,170	513	502	1,015	156.5	648,594
Keweenaw Co.	10	1	0	1	--	2,105
Lake Co.	10	3	5	8	--	12,013
Leelanau Co.	10	1	5	6	--	21,657
Lenawee Co.	80	37	32	69	70.0	98,623
Livingston Co.	120	46	56	102	53.8	189,651
Luce Co.	10	4	3	7	--	6,358
Mackinac Co.	10	2	3	5	--	10,712
Manistee Co.	20	3	9	12	49.1	24,427
Marquette Co.	50	10	26	36	54.1	66,502
Mason Co.	20	4	10	14	48.2	29,073
Mecosta Co.	30	10	12	22	50.7	43,391
Menominee Co.	20	9	2	11	47.7	23,046
Midland Co.	40	14	17	31	37.2	83,411
Missaukee Co.	10	3	2	5	--	14,998
Montcalm Co.	60	18	30	48	75.5	63,550
Montmorency Co.	10	1	6	7	--	9,250
Muskegon Co.	210	87	91	178	102.5	173,693
Newaygo Co.	50	17	19	36	74.6	48,242
Oceana Co.	20	4	9	13	49.2	26,442
Ogemaw Co.	20	4	7	11	52.4	20,981
Ontonagon Co.	10	2	1	3	--	5,881
Osceola Co.	20	5	11	16	68.8	23,260
Oscoda Co.	10	5	1	6	--	8,287
Otsego Co.	20	10	7	17	69.3	24,538
Ottawa Co.	150	66	63	129	45.0	286,383
Presque Isle Co.	10	2	2	4	--	12,791
Roscommon Co.	20	5	9	14	58.6	23,895
Saginaw Co.	310	142	127	269	140.2	191,934
Sanilac Co.	30	12	10	22	53.3	41,269
Schoolcraft Co.	10	0	2	2	--	8,049
Shiawassee Co.	60	21	25	46	67.2	68,446
St. Joseph Co.	50	19	22	41	67.3	60,947
Tuscola Co.	20	4	8	12	22.7	52,764
Van Buren Co.	70	25	32	57	75.6	75,353
Washtenaw Co.	630	305	241	546	148.5	367,627
Wexford Co.	30	5	13	18	54.1	33,276
Prisons	90	45	33	78	N/A	N/A
Unknown	0	0	0	0	N/A	N/A

on January 1, 2018

Table 5. Current Residence and Care and Viral Suppression (VS) Rates of Persons Living with HIV in MI

Current Residence	Count	Care Rate	VS Rate	Current Residence	Count	Care Rate	VS Rate
Total	16,218	82%	89%	Select Counties (cntd)			
Detroit Metro Area	10,384	81%	87%	Oceana Co.	13	54%	100%
Lapeer Co.	47	89%	95%	Ogemaw Co.	11	80%	88%
Macomb Co.	1,154	82%	91%	Osceola Co.	16	81%	100%
Monroe Co.	105	70%	88%	Otsego Co.	17	94%	100%
Oakland Co.	2,071	82%	91%	Ottawa Co.	129	88%	97%
St. Clair Co.	112	83%	90%	Roscommon Co.	14	93%	92%
Wayne Co.:excl Detroit	2,057	82%	91%	Saginaw Co.	269	87%	90%
Detroit	4,838	80%	83%	Sanilac Co.	22	59%	100%
Outstate	5,756	83%	91%	Shiawassee Co.	46	84%	94%
Select Counties of Current Residence				St. Joseph Co.	41	73%	93%
Allegan Co.	134	90%	93%	Tuscola Co.	12	75%	88%
Alpena Co.	13	77%	100%	Van Buren Co.	57	87%	91%
Antrim Co.	14	86%	92%	Washtenaw Co.	546	86%	93%
Baraga Co.	10	80%	100%	Wexford Co.	18	89%	93%
Barry Co.	21	84%	100%	Select Cities of Current Residence			
Bay Co.	88	90%	96%	Adrian	43	87%	94%
Berrien Co.	238	71%	89%	Allen Park	38	91%	97%
Branch Co.	27	88%	87%	Ann Arbor	188	86%	94%
Calhoun Co.	190	80%	91%	Auburn Hills	37	81%	83%
Cass Co.	23	68%	93%	Battle Creek	141	81%	91%
Charlevoix Co.	10	80%	88%	Bay City	74	90%	95%
Cheboygan Co.	15	80%	100%	Belleville	65	82%	96%
Chippewa Co.	29	93%	88%	Benton Harbor	96	79%	89%
Clare Co.	35	80%	82%	Berkley	24	78%	100%
Clinton Co.	42	100%	88%	Berrien Springs	19	53%	100%
Delta Co.	19	89%	93%	Birmingham	26	76%	89%
Eaton Co.	84	90%	84%	Bloomfield Hills	48	76%	97%
Emmet Co.	14	93%	85%	Brighton	30	90%	96%
Genesee Co.	566	78%	85%	Brownstown	20	89%	94%
Grand Traverse Co.	78	87%	95%	Burton	35	82%	93%
Gratiot Co.	26	92%	95%	Cadillac	13	85%	90%
Hillsdale Co.	17	82%	83%	Caledonia	13	91%	100%
Houghton Co.	17	88%	100%	Canton	95	80%	88%
Ingham Co.	448	84%	88%	Carson City	16	94%	93%
Ionia Co.	50	88%	93%	Center Line	24	95%	90%
Iosco Co.	12	83%	90%	Charlotte	13	92%	83%
Isabella Co.	49	83%	92%	Chesterfield	32	83%	96%
Jackson Co.	218	82%	92%	Clarkston	30	83%	100%
Kalamazoo Co.	363	80%	90%	Clawson	18	82%	100%
Kent Co.	1,015	82%	94%	Clinton Township	169	79%	91%
Lenawee Co.	69	80%	94%	Coldwater	18	94%	88%
Livingston Co.	102	85%	94%	Commerce Township	18	81%	92%
Manistee Co.	12	50%	80%	Comstock Park	20	84%	100%
Marquette Co.	36	88%	93%	Davison	19	63%	91%
Mason Co.	14	100%	100%	Dearborn	94	78%	94%
Mecosta Co.	22	64%	100%	Dearborn Heights	91	87%	94%
Menominee Co.	11	70%	86%	Douglas	14	93%	100%
Midland Co.	31	86%	86%	East Lansing	37	69%	96%
Montcalm Co.	48	85%	98%	Eastpointe	130	86%	85%
Muskegon Co.	178	82%	93%	Ecorse	29	64%	94%
Newaygo Co.	36	94%	97%	Farmington	24	75%	100%

↓ Continued on next page

on January 1, 2018

Table 5. Current Residence and Care and Viral Suppression (VS) Rates of Persons Living with HIV in MI

Current Residence	Count	Care Rate	VS Rate	Current Residence	Count	Care Rate	VS Rate
Select Cities (cntd)				Select Cities (cntd)			
Farmington Hills	88	81%	86%	Northville	25	87%	95%
Fennville	35	91%	100%	Novi	44	93%	87%
Fenton	13	69%	89%	Oak Park	111	81%	86%
Ferndale	145	87%	93%	Okemos	20	85%	100%
Flat Rock	15	87%	77%	Owosso	16	87%	100%
Flint	386	79%	81%	Pinckney	14	71%	100%
Flushing	21	76%	93%	Plymouth	31	81%	96%
Garden City	33	91%	93%	Pontiac	319	80%	85%
Gaylord	15	93%	100%	Port Huron	54	83%	88%
Grand Blanc	40	73%	93%	Portage	42	74%	93%
Grand Haven	13	100%	100%	Redford	160	85%	91%
Grand Rapids	765	83%	93%	River Rouge	33	78%	96%
Grandville	16	94%	86%	Riverview	14	92%	100%
Grosse Pointe	61	77%	93%	Rochester	50	83%	95%
Hamtramck	86	85%	83%	Rockford	14	93%	100%
Harper Woods	59	78%	84%	Romulus	82	88%	92%
Harrison	18	78%	71%	Roseville	103	89%	92%
Harrison Township	33	83%	92%	Royal Oak	142	86%	97%
Haslett	13	62%	100%	Saginaw	238	89%	90%
Hazel Park	66	83%	91%	Saint Clair Shores	53	83%	88%
Highland Park	210	75%	86%	Saint Joseph	24	83%	84%
Holland	55	84%	90%	Saint Louis	14	93%	92%
Holly	17	76%	100%	Saugatuck	22	86%	100%
Holt	21	76%	88%	Shelby Township	39	82%	100%
Howell	29	90%	92%	South Haven	16	100%	79%
Hudsonville	20	88%	100%	Southfield	371	80%	90%
Inkster	168	79%	81%	Southgate	36	67%	89%
Ionia	26	88%	86%	Springfield	15	60%	78%
Jackson	181	82%	91%	Sterling Heights	102	81%	96%
Kalamazoo	290	80%	89%	Sturgis	13	69%	89%
Kentwood	28	93%	96%	Taylor	132	81%	93%
Kincheloe	19	100%	94%	Three Rivers	23	77%	94%
Lake Orion	18	59%	100%	Traverse City	59	82%	96%
Lansing	386	87%	85%	Trenton	18	94%	100%
Lapeer	22	84%	100%	Troy	63	83%	94%
Lathrup Village	23	95%	95%	Warren	287	77%	90%
Lincoln Park	67	81%	89%	Washington Township	17	50%	71%
Livonia	82	86%	95%	Waterford	84	80%	91%
Macomb	41	70%	96%	Wayne	48	85%	90%
Madison Heights	58	78%	86%	West Bloomfield	72	91%	95%
Marquette	17	80%	100%	Westland	177	87%	93%
Melvindale	24	87%	95%	White Lake	17	71%	100%
Midland	26	88%	84%	Wixom	32	90%	93%
Milan	16	67%	100%	Wyandotte	24	87%	100%
Monroe	52	75%	86%	Wyoming	97	75%	94%
Mount Clemens	60	85%	92%	Ypsilanti	302	86%	91%
Mount Morris	19	74%	93%				
Mount Pleasant	43	83%	91%				
Muskegon	151	84%	92%				
New Baltimore	17	88%	93%				
New Haven	23	91%	89%				
Newaygo	14	100%	100%				
Niles	35	73%	91%				

During 2017

Table 6. Demographic Information of Michigan Residents Newly Diagnosed with HIV

Demographic Group	New HIV Diagnoses			2017 Census Estimates		New Stage 3	
	Count	% of Total	Rate per 100,000	Count	% of Total	Count	% of HIV Prevalence
Total	767	100%	7.7	9,962,309	100%	312	2%
Race/Ethnicity							
Black	449	59%	32.6	1,376,455	14%	188	2%
Hispanic	56	7%	11.1	504,857	5%	15	2%
White	242	32%	3.2	7,488,326	75%	107	2%
Other	20	3%	3.4	592,671	6%	2	0%
Asian/NH/PI	7	<1%	--	318,514	3%	1	1%
Am Indian/AN	1	<1%	--	56,869	<1%	0	0%
Multi/Other	12	2%	5.5	217,288	2%	1	0%
Gender & Race							
Male	608	79%	12.4	4,903,750	49%	232	2%
Black	339	44%	51.9	653,538	7%	133	2%
Hispanic	47	6%	18.3	256,593	3%	11	1%
White	205	27%	5.5	3,702,064	37%	87	2%
Other	17	2%	5.8	291,555	3%	1	0%
Female	137	18%	2.7	5,058,559	51%	69	2%
Black	94	12%	13.0	722,917	7%	46	2%
Hispanic	8	1%	--	248,264	2%	3	2%
White	33	4%	0.9	3,786,262	38%	20	3%
Other	2	<1%	--	301,116	3%	0	0%
Transgender	22	3%	--	N/A	N/A	11	6%
Black	16	2%	--	N/A	N/A	9	6%
Hispanic	1	<1%	--	N/A	N/A	1	17%
White	4	<1%	--	N/A	N/A	0	0%
Other	1	<1%	--	N/A	N/A	1	14%
Risk							
MSM	448	58%	157.5	284,418	3%	150	2%
PWID	30	4%	--	N/A	N/A	24	2%
MSM/PWID	19	2%	--	N/A	N/A	14	2%
Heterosexual	143	19%	--	N/A	N/A	70	2%
Males	33	4%	--	N/A	N/A	21	3%
Females	110	14%	--	N/A	N/A	49	2%
Blood Products	0	0%	--	N/A	N/A	0	0%
Perinatal	1	<1%	--	N/A	N/A	4	2%
Undetermined	126	16%	--	N/A	N/A	50	2%
Age (in years)							
<13	1	<1%	--	884,382	9%	0	0%
13-19	45	6%	4.6	972,440	10%	7	4%
20-24	146	19%	20.8	702,672	7%	22	3%
25-29	188	25%	27.8	676,087	7%	46	3%
30-39	161	21%	13.6	1,185,193	12%	79	3%
40-49	113	15%	9.4	1,205,811	12%	64	2%
50-59	89	12%	6.3	1,405,472	14%	62	1%
60+	24	3%	0.8	2,930,259	29%	32	1%

New stage 3 includes persons who progressed to stage 3 last year. Newly diagnosed individuals who progressed to Stage 3 in the same year are counted in "New HIV Diagnoses" and "New Stage 3", however most only fall into one group. The "% of HIV prevalence" is the proportion of the demographic who progressed to stage 3 (denominator from table 2 - e.g. of PLWH in 2017, 2% progressed to stage 3).

During 2017

Table 7. Demographic Information and Linkage to Care Rates of Michigan Residents Newly Diagnosed with HIV

Gender & Race/Risk	Age at HIV Diagnosis														Total Linkage	
	13-19		20-24		25-29		30-39		40-49		50-59		60+			
	Count	Linkage Rate	Count	Linkage Rate	Count	Linkage Rate	Count	Linkage Rate	Count	Linkage Rate	Count	Linkage Rate	Count	Linkage Rate	Count	Linkage Rate
Total	45	53%	146	45%	188	48%	161	51%	113	52%	89	51%	24	42%	767	49%
Male	35	60%	130	45%	159	49%	115	49%	84	55%	64	47%	21	43%	608	49%
Race Black	30	63%	87	38%	106	50%	50	36%	38	55%	26	38%	2	.	339	46%
Race Hispanic	1	.	10	50%	14	29%	13	46%	6	.	3	.	0	.	47	34%
Race White	3	.	28	61%	33	52%	50	64%	38	63%	34	56%	19	37%	205	57%
Race Other	1	.	5	.	6	.	2	.	2	.	1	.	0	.	17	53%
Risk MSM	31	61%	114	45%	124	49%	83	55%	51	59%	34	44%	12	58%	449	51%
Risk PWID	0	.	1	.	3	.	1	.	3	.	2	.	1	.	11	27%
Risk Heterosexual	1	.	4	.	6	.	11	45%	3	.	6	.	1	.	32	56%
Risk Unknown	3	.	11	36%	26	42%	20	25%	27	52%	22	50%	7	.	116	41%
Female	8	.	11	55%	25	44%	40	58%	25	44%	24	58%	3	.	137	50%
Race Black	5	.	6	.	18	39%	23	61%	20	45%	18	56%	3	.	94	49%
Race Hispanic	1	.	0	.	1	.	3	.	1	.	2	.	0	.	8	.
Race White	1	.	5	.	6	.	14	50%	3	.	4	.	0	.	33	58%
Race Other	1	.	0	.	0	.	0	.	1	.	0	.	0	.	2	.
Risk PWID	1	.	1	.	6	.	5	.	2	.	4	.	0	.	19	42%
Risk Heterosexual	6	.	9	.	19	42%	31	55%	21	48%	17	65%	3	.	106	50%
Risk Unknown	1	.	1	.	0	.	4	.	2	.	3	.	0	.	12	67%
Transgender	2	.	5	.	4	.	6	.	4	.	1	.	0	.	22	50%
Race Black	2	.	3	.	3	.	4	.	4	.	0	.	0	.	16	44%
Race Hispanic	0	.	0	.	0	.	1	.	0	.	0	.	0	.	1	.
Race White	0	.	2	.	0	.	1	.	0	.	1	.	0	.	4	.
Race Other	0	.	0	.	1	.	0	.	0	.	0	.	0	.	1	.
Risk Sex with Male	2	.	5	.	4	.	6	.	4	.	1	.	0	.	22	50%
Risk Unknown	0	.	0	.	0	.	0	.	0	.	0	.	0	.	0	.

The linkage rate is the proportion of those newly diagnosed who received a CD4, viral load, or genotype 9-30 days following diagnosis. <13 years of age is not listed due to small sample size - in 2017, 1 black female <13 years old with unknown risk was diagnosed and linked to care.

During 2017

Table 8. Residence at Diagnosis of Persons Newly Diagnosed with HIV in Michigan

Local Health Department Jurisdiction of residence at diagnosis	New HIV Diagnoses			2017 Census Estimates		New Stage 3 Diagnoses	
	Count	% of Total	Rate per 100,000	Count	%	Count	% of HIV Prevalence
Total	767	100%	7.7	9,962,309	100%	312	2%
Detroit Metro Area	512	67%	12.0	4,273,000	43%	199	2%
Lapeer County	3	<1%	--	88,174	<1%	0	0%
Macomb County	71	9%	8.1	871,375	9%	22	2%
Monroe County	4	<1%	--	149,649	2%	2	2%
Oakland County	105	14%	8.4	1,250,836	13%	40	2%
St Clair County	4	<1%	--	159,350	2%	2	2%
Wayne Co.: excl Detroit	97	13%	9.0	1,080,512	11%	31	1%
Detroit	228	30%	33.9	673,104	7%	102	2%
Out-state	249	32%	4.4	5,689,309	57%	108	2%
Allegan County	7	<1%	--	116,447	1%	6	4%
Barry-Eaton	2	<1%	--	169,606	2%	3	3%
Bay County	7	<1%	--	104,239	1%	1	1%
Benzie-Leelanau	0	0%	--	39,188	<1%	0	0%
Berrien County	9	1%	--	154,259	2%	3	1%
Branch-Hillsdale-St. Joseph	2	<1%	--	150,213	2%	2	2%
Calhoun County	4	<1%	--	134,128	1%	2	1%
Central Michigan District	4	<1%	--	189,075	2%	0	0%
Chippewa County	0	0%	--	37,711	<1%	0	0%
Delta-Menominee	3	<1%	--	58,949	<1%	0	0%
Dickinson-Iron	0	0%	--	36,471	<1%	0	0%
District 10	3	<1%	--	263,352	3%	0	0%
District 2	3	<1%	--	64,661	<1%	0	0%
District 4	0	0%	--	75,747	<1%	0	0%
Genesee County	34	4%	8.3	407,385	4%	9	2%
Grand Traverse County	1	<1%	--	91,807	<1%	2	3%
Huron County	0	0%	--	31,280	<1%	0	0%
Ingham County	23	3%	7.9	290,186	3%	14	3%
Ionia County	2	<1%	--	64,291	<1%	1	2%
Jackson County	10	1%	6.3	158,640	2%	8	4%
Kalamazoo County	19	2%	7.2	262,985	3%	10	3%
Kent County	47	6%	7.2	648,594	7%	22	2%
Lenawee County	4	<1%	--	98,623	<1%	1	1%
Livingston County	3	<1%	--	189,651	2%	2	2%
Luce-Mack-Alger-School	1	<1%	--	34,129	<1%	1	5%
Marquette County	1	<1%	--	66,502	<1%	0	0%
Mid-Michigan District	5	<1%	--	182,988	2%	3	3%
Midland County	2	<1%	--	83,411	<1%	2	6%
Muskegon County	3	<1%	--	173,693	2%	2	1%
Northwest MI Com Hlth Agency	0	0%	--	107,110	1%	0	0%
Ottawa County	10	1%	3.5	286,383	3%	5	4%
Saginaw County	20	3%	10.4	191,934	2%	3	1%
Sanilac County	1	<1%	--	41,269	<1%	0	0%
Shiawassee County	1	<1%	--	68,446	<1%	0	0%
Tuscola County	0	0%	--	52,764	<1%	0	0%
Van Buren-Cass	2	<1%	--	126,731	1%	2	3%
Washtenaw County	14	2%	3.8	367,627	4%	3	1%
Western UP District	2	<1%	--	67,965	<1%	1	2%
In Prison	6	<1%	N/A	N/A	N/A	5	N/A

The "% of HIV prevalence" is the proportion of the demographic who progressed to stage 3 (denominator from table 2 - e.g. of PLWH in 2017, 2% progressed to stage 3).

During 2017

Table 9. Residence at Diagnosis and Linkage to Care of Persons Newly Diagnosed with HIV in Michigan

Local Health Dept Jurisdiction of residence at diagnosis	Number of HIV Diagnoses	Linked in 9-30 days	Linked After 30 days	Ever Linked	Never Linked
Total	767	49%	43%	93%	7%
Detroit Metro Area	512	48%	44%	92%	8%
Out-state	249	51%	43%	93%	7%
Select Counties of Residence at Diagnosis					
Genesee County	34	38%	44%	82%	18%
Ingham County	23	35%	57%	92%	9%
Jackson County	10	60%	40%	100%	0%
Kalamazoo County	19	42%	53%	95%	5%
Kent County	47	60%	36%	96%	4%
Macomb County	71	55%	39%	94%	6%
Oakland County	105	55%	41%	96%	4%
Ottawa County	10	70%	30%	100%	0%
Washtenaw County	14	50%	43%	93%	7%
Wayne Co.: excl Detroit	97	52%	37%	89%	11%
Detroit	228	41%	50%	91%	8%
Select Cities of Residence at Diagnosis					
Clinton Township	11	64%	36%	100%	0%
Flint	28	39%	43%	82%	18%
Grand Rapids	35	57%	37%	94%	6%
Kalamazoo	15	40%	53%	93%	7%
Lansing	23	39%	61%	100%	0%
Pontiac	23	39%	61%	100%	0%
Saginaw	19	53%	42%	95%	5%
Southfield	17	41%	59%	100%	0%
Sterling Heights	11	55%	45%	100%	0%
Warren	19	58%	21%	79%	21%
Westland	10	60%	30%	90%	10%

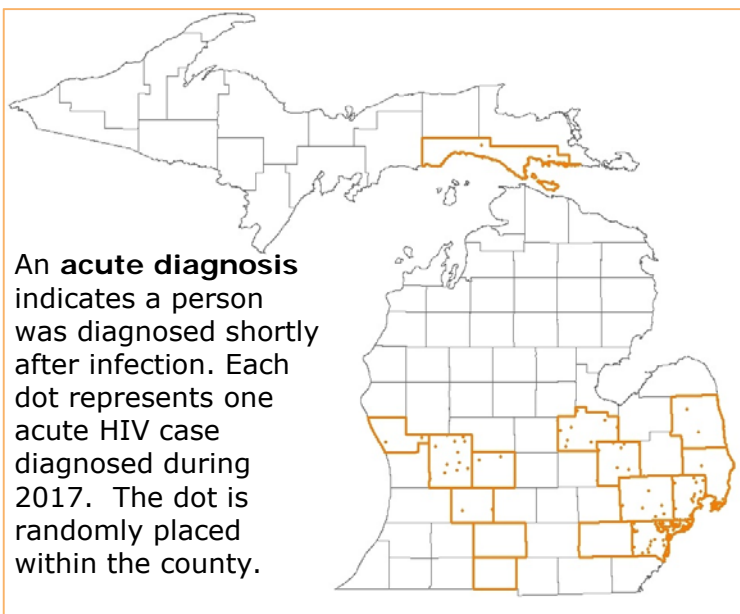


Table 10. Number of perinatal diagnoses during the past five years

Birth year	Confirmed HIV Positive
2013	0
2014	3
2015	0
2016	2
2017	1

For more information on HIV in Michigan, visit our website:

https://www.michigan.gov/mdhhs/0,5885,7-339-71550_2955_2982_72251-350111--,00.html