

You are invited to join

MiPEHS

Michigan PFAS
Exposure &
Health Study





STATE OF MICHIGAN

DEPARTMENT OF HEALTH AND HUMAN SERVICES

LANSING

GRETCHEN WHITMER
GOVERNOR

ROBERT GORDON
DIRECTOR

Date

Dear SAMPLE Community Member:

You and members of your household may be eligible to participate in the Michigan PFAS Exposure and Health Study (MiPEHS). Per-and polyfluoroalkyl substances (PFAS) are human-made chemicals that stay in the environment for a long time. With your help, we may gain a better understanding of how exposure to these chemicals affect people's long-term health.

Taking part in MiPEHS is completely free and voluntary. If you or other members of your household decide to join MiPEHS, each of you will be asked to fill out a survey and provide a blood sample three different times – once about every two years. We will offer gift cards as a "thank you" for participating.

You can call our research partner, RTI International, at 855-322-3037 to learn more and find out if you are eligible for this study. For more information, visit Michigan.gov/DEHbio and click on MiPEHS.

By participating in this study, you can:

- Learn more about your personal exposure to PFAS.
- Understand more about your community's exposure to PFAS.
- Expand public health knowledge on multiple PFAS.
- Have an impact on PFAS research.
- Foster a healthier Michigan for future generations.

Thank you for your consideration. On behalf of the entire MiPEHS research team, I hope you decide to join us in this important study!

Sincerely,

A handwritten signature in black ink, appearing to read "Kory Groetsch".

Kory Groetsch, M.S.
Environmental Public Health Director and MiPEHS Principal Investigator
Michigan Department of Health and Human Services

Michigan PFAS Exposure and Health Study

WHAT IS THE MICHIGAN PFAS EXPOSURE AND HEALTH STUDY (MiPEHS)?

MiPEHS (pronounced: *my-pez*) is a PFAS Exposure and Health Study that is being conducted in the City of Parchment and Cooper Township of Kalamazoo County and in the Belmont/Rockford area of Kent County.



The Michigan Department of Health and Human Services (MDHHS) is seeking to understand exposure to PFAS in these communities and learn how PFAS relates to certain health outcomes in people. MiPEHS is the first of two studies that MDHHS is conducting in these communities, and it will span several years with participants invited to three study office visits beginning in 2020. Learn more about MiPEHS at Michigan.gov/DEHbio and clicking "MiPEHS".

MDHHS will also launch the Michigan site of a nation-wide Multi-Site Study (MSS) on PFAS and health. Learn more about MSS at Michigan.gov/DEHbio and clicking on "MSS".

WHO CAN PARTICIPATE IN MiPEHS?



People who currently live in the **City of Parchment** and an area of **Cooper Township** just outside of the City of Parchment *and* drank water from their faucet between the years of 2005 and 2018 may be eligible to participate.

People who currently live in the **Belmont/Rockford area** *and* drank water from their private well between 2005 and 2018 may be eligible to participate if their well has been tested for PFAS by or at the direction of a State of Michigan agency.

WHEN WILL MiPEHS TAKE PLACE?



The MiPEHS study office first opens in 2020 and will stay open for several months, during which time office visits can be scheduled on weekdays or on weekends. The study office will open three times over the span of the study and will have similar operating hours each time.

MDHHS will send letters to residents who are in the study area and invite them to participate. If you did not get a letter but think you're eligible, please call 855-322-3037.



IF I PARTICIPATE, WHAT DO I HAVE TO DO?



MiPEHS is a long-term study that will take place over several years. If you enroll in MiPEHS when it starts, you will be asked to participate in three study office visits spaced about two years apart. Each office visit will take up to 90 minutes. Participating in all three MiPEHS study office visits will help us gather the best data and come to the most useful conclusions.

There are two study offices, one in each community. You will only be asked to go to the study office in your community.

During a MiPEHS study office visit, trained health professionals will:

- Collect blood samples
- Take body measurements



You will be asked to answer questions on a survey before you come to your scheduled study office visit. These questions are about your medical history, your use of water filters, and other topics related to PFAS exposure and your health.

MiPEHS is completely voluntary and free of charge. All information provided to us is confidential and will be kept private.

Study staff are taking extra precautions to reduce any exposure to COVID-19.

WHY SHOULD I PARTICIPATE?



By participating you can:

- learn your PFAS blood levels at no charge to you
- add to scientific knowledge about PFAS and potential effects on the health of people
- add to the understanding of your community's exposure to PFAS

The data collected may help:

- doctors better understand health problems to watch for in people who have been exposed to PFAS
- scientists better understand how PFAS exposure may affect the health of the population
- foster a healthier Michigan for future generations



HOW CAN I FIND OUT MORE ABOUT THIS AND OTHER MDHHS STUDIES?



Call 855-322-3037

Visit www.Michigan.gov/DEHbio



COVID-19 Safety Measures

The Michigan Department of Health and Human Services (MDHHS) is committed to protecting your health while you take part in the Michigan PFAS Exposure and Health Study (MiPEHS).

STUDY OFFICE VISIT PRECAUTIONS



BEFORE YOUR STUDY OFFICE VISIT, PLEASE:

- ✓ Answer COVID-19 screening questions when you call to make an appointment.
- ✓ Complete the study survey online to reduce time in the office.



STUDY STAFF ARE REQUIRED TO:

- ✓ Screen for COVID-19 symptoms and exposure before every work shift.
- ✓ Wear face coverings and gloves.
- ✓ Sanitize appointment areas and surfaces between each appointment.
- ✓ Remain 6 feet from participants unless drawing blood or taking body measurements.



DURING YOUR STUDY OFFICE VISIT, PLEASE:

- ✓ Wait in your vehicle until staff bring you into the study office.
- ✓ Answer COVID-19 screening questions that one of our staff will ask you.
- ✓ Have your temperature taken upon entering building.
- ✓ Wear a mask or other face covering. Face coverings will be available if you don't have one.



COVID-19 Safety Measures for PFAS Health Studies (cont.)

WATER SAMPLING VISIT PRECAUTIONS



DURING YOUR WATER SAMPLING VISIT, MDHHS STAFF ARE REQUIRED TO:

- ✓ Screen for COVID-19 symptoms and exposure before every work shift.
- ✓ Wear a face covering and gloves.
- ✓ Remain 6 feet from household members when possible.



DURING YOUR WATER SAMPLING VISIT, PLEASE:

- ✓ Answer COVID-19 screening questions that MDHHS staff will ask.
- ✓ Wear a face covering while the MDHHS employee is in your home.
- ✓ Maintain personal distance of 6 feet from MDHHS employee.

HAVE STUDY QUESTIONS? WANT TO ENROLL?



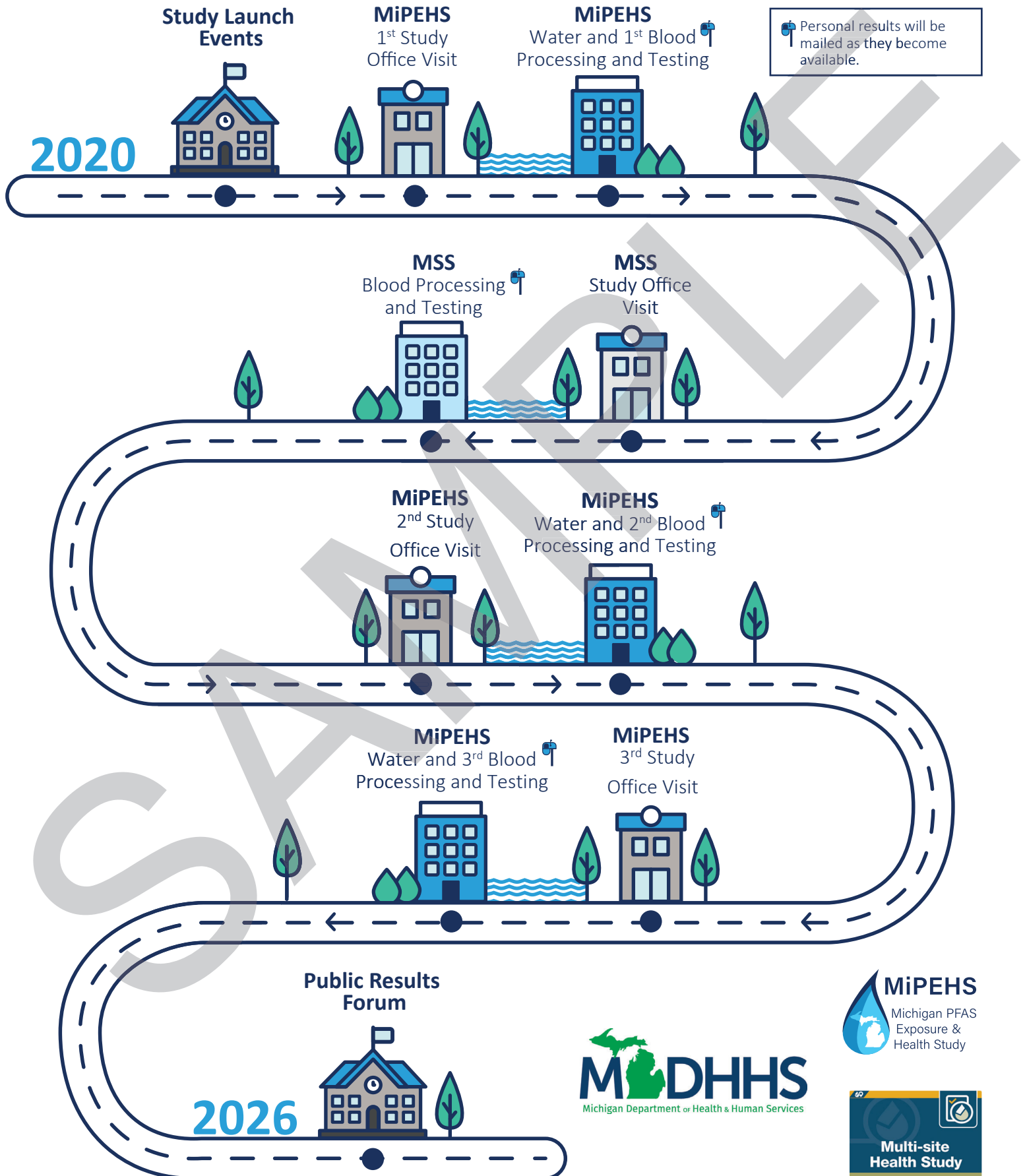
Call 1-855-322-3037

Visit www.Michigan.gov/DEHbio and
click on MiPEHS to find out more.



PFAS Health Studies Timeline

Michigan PFAS Health & Exposure Assessment (MiPEHS) and the Multi-Site Study (MSS)



Michigan Department of Health and Human Services (MDHHS)

Please note if needed, free language assistance services are available.

Call (844) 464-7327 (TTY users call 711).

[illegible]

The Michigan Department of Health and Human Services (MDHHS) does not discriminate against any individual or group because of race, religion, age, national origin, color, height, weight, marital status, genetic information, sex, sexual orientation, gender identity or expression, political beliefs or disability. Further, MDHHS:

- Provides free aids and services to people with disabilities to communicate with us, such as:
 - Qualified sign language interpreters
 - Written information in other formats (large print, audio, accessible electronic formats, other formats); and
- Provides free language services to people whose primary language is not English, such as:
 - Qualified interpreters
 - Information written in other languages

If you need the above services, contact the MDHHS Section 1557 Coordinator.

If you believe that MDHHS has failed to provide the above services or discriminated in another way on the basis of race, color, national origin, age, disability, or sex, you can file a grievance with: MDHHS Section 1557 Coordinator. You can file a grievance in person or by mail, fax, or email. If you need help filing a grievance, the MDHHS Section 1557 Coordinator is available to help you.

MDHHS Section 1557 Coordinator
Compliance Office, 4th Floor
P.O. Box 30195
333 South Grand Ave
Lansing, MI 48901

517-284-1018 (Main), TTY users call 711, 517-335-6146 (Fax),
MDHHS-ComplianceOffice@michigan.gov

You can also file a civil rights complaint with the responsible federal agency.

<p>If your grievance or complaint is about your Medicaid application, benefits or services you can file a civil rights complaint with the U.S. Department of Health and Human Services at https://bit.ly/2pBS4YG, or by mail or phone at:</p> <p>U.S. Department of Health and Human Services 200 Independence Avenue, SW Room 509F, HHH Building Washington, D.C. 20201 800-368-1019, 800-537-7697 (TDD)</p> <p>Complaint forms are available at https://bit.ly/2IKsHMS.</p>	<p>If your grievance or complaint is about your application for or current food assistance benefits, you can file a discrimination complaint with the U.S. Department of Agriculture (USDA) Program by:</p> <p>Completing a Complaint Form, (AD-3027) found online at: https://bit.ly/2g9zzpU or at any USDA office, or write a letter addressed to USDA at the address below. In your letter, provide all information requested in the form.</p> <p>To request a copy of the complaint form, call 866-632-9992. Send your completed form or letter to USDA by mail: U.S. Department of Agriculture Office of the Assistant Secretary for Civil Rights 1400 Independence Avenue, SW Washington, D.C. 20250-9410</p> <p>Fax: 202-690-7442; or Email: program.intake@usda.gov</p>
-------------------------------------------------------------------------------------------------------------------------------------------------------------------------------------------------------------------------------------------------------------------------------------------------------------------------------------------------------------------------------------------------------------------------------------------------------------------------------------------------------------------------------------------------------------------------	-----------------------------------------------------------------------------------------------------------------------------------------------------------------------------------------------------------------------------------------------------------------------------------------------------------------------------------------------------------------------------------------------------------------------------------------------------------------------------------------------------------------------------------------------------------------------------------------------------------------------------------------------------------------------------------------------------------------------------------------------------------------------------------------------------------------------------------------------------------------------------------

MDHHS is an equal opportunity provider.