



Michigan Statewide HIV Surveillance Report New Diagnoses and Prevalence Tables

All data as of July 1, 2019



HIV & STD Surveillance & Epidemiology Section
Division of Communicable Disease
Bureau of Disease Control, Prevention and Epidemiology
Michigan Department of Health and Human Services

Lansing - HIV Surveillance Office
333 S. Grand Ave., 3rd Floor
Lansing, MI 48913
517-335-8165

Southfield - HIV Surveillance Office
MDHHS - South Oakland Health Center
27725 Greenfield Rd, Office 57A
Southfield, MI 48076
248-424-7910



www.michigan.gov/hivstd

Michigan's HIV Surveillance Program collects, interprets, and disseminates population level data regarding persons living with HIV (PLWH) and persons at risk of contracting the virus. Since 2001, the program has produced semi-annual reports for a wide audience. Beginning in 2016, these reports were overhauled and split into two parts. "HIV in Michigan, an overview of the epidemic" presents the most relevant information using graphical, user-friendly displays and can be found on our website. To explore current, pressing issues regarding the HIV epidemic, please review that report. This report, "Michigan Statewide HIV Surveillance Report, New Diagnoses and Prevalence Tables", contains the most commonly requested regional data.

The old surveillance reports utilized residence at diagnosis (the CDC standard) and therefore any person diagnosed in Michigan, regardless of their current location, was included. However, due to population changes, as well as the extended lifespan among PLWH, it is more appropriate to include only those currently living in Michigan. Due to differences in the underlying dataset, do not compare any numbers or figures in the new Michigan Statewide HIV Surveillance Report to reports preceding 2016.

Key Definitions

The Basics

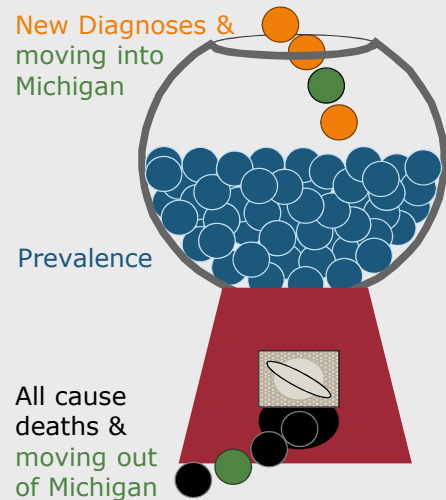
New Diagnoses: The number of cases newly diagnosed over a given period of time, usually a year. In HIV surveillance new diagnoses do not necessarily represent new infections as newly diagnosed persons may have been infected for many years.

Prevalence: The total number of persons currently living with HIV (PLWH).

Reported Prevalence: The number of diagnosed persons who were reported to surveillance.

Estimated Prevalence: The CDC estimates that 13% of PLWH in Michigan are not diagnosed. In other words, the reported prevalence is 87% of the estimated prevalence. When displayed as a number, the estimated prevalence is rounded up to the nearest ten.

HIV Stages: Stage 3 (formally called AIDS) refers to persons with a CD4 count of <200 cells. Once a person progresses to stage 3, the CD4 count may improve, but that person is still categorized as stage 3. Stages 0, 1, or 2 (aka non-stage 3) refer to persons who have never progressed to stage 3.



Linkage, Care, and Viral Suppression

Linked to Care: The proportion of newly diagnosed PLWH who have visited a doctor at least eight days after diagnosis (assessed by CD4, viral load, or genotype test).

In Care: The proportion of PLWH who visit a doctor at least once during a calendar year (assessed by CD4, viral load, or genotype test).

Overview

Community Viral Suppression: The proportion virally suppressed ($\leq 200\text{c/mL}$) out of *all* PLWH. Higher levels of community viral suppression reduce HIV transmission.

Viral Suppression (VS) Rate: The proportion virally suppressed ($\leq 200\text{c/mL}$) out of PLWH *in care*.

Demographics

Race: In this report, persons described as white, Black, Asian/Native Hawaiian/Pacific Islander, or American Indian/Alaska Native are all non-Hispanic/Latinx; persons described as Hispanic may be of any race.

Gender: When available, this report utilizes current gender. When missing, gender is assumed to match sex at birth. Surveillance is aware that transgender persons are underreported and, many times, are categorized as the gender of their birth sex. This is because current gender did not become available for collection until 2010. Michigan surveillance anticipates that the reporting of current gender identity will continue to improve.

Risk Categories and Hierarchy

MSM: Men who have sex with men.

PWID: Persons who inject drugs.

Heterosexual: Males: men who are not MSM or PWID and reported sex with an HIV positive female or a female at risk (includes CDC and HRSA definitions).

Females: females who are not a PWID and reported sex with a male.

Blood Products: Hemophiliacs, blood transfusion recipients, and organ recipients who received blood products prior to 1985 & persons documented to have ever received an infected organ or unit of blood.

Perinatal: HIV transmission from mother to child during birth or through breastfeeding.

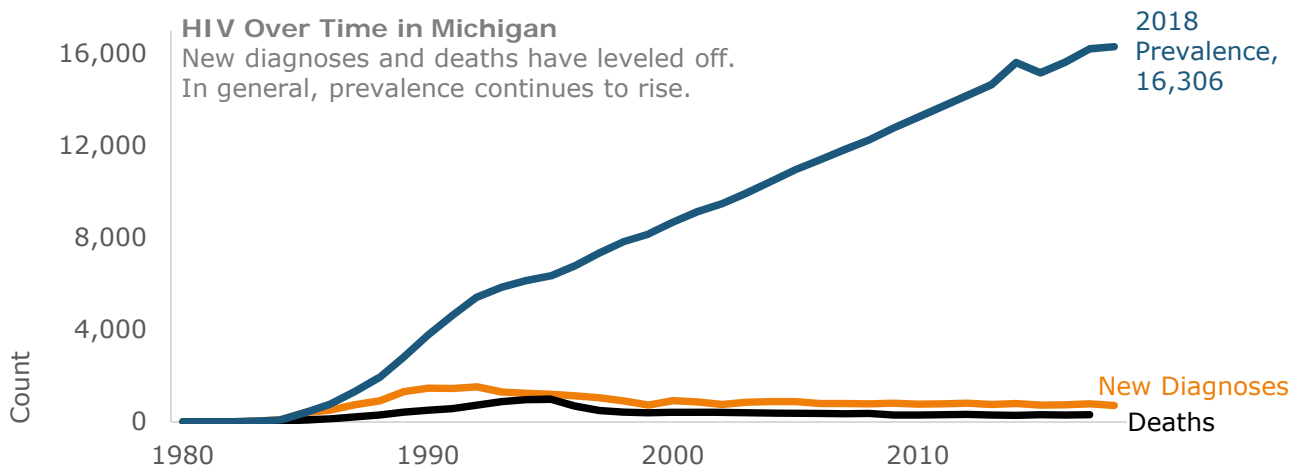


Table 1. New Diagnoses, Deaths, and Prevalence of HIV Infection by Year in Michigan

Year	HIV Infection - All Stages			HIV Stage 3 Infection		
	Diagnoses	Deaths	Prevalence	Diagnoses	Deaths	Prevalence
1981	3	3	0	3	3	0
1982	3	1	2	2	1	1
1983	31	7	26	22	7	16
1984	73	23	76	50	23	43
1985	395	74	397	98	74	67
1986	494	124	767	168	121	114
1987	734	199	1,302	316	191	239
1988	901	289	1,914	485	280	444
1989	1,301	413	2,802	681	403	722
1990	1,452	491	3,763	786	471	1,037
1991	1,442	569	4,636	949	550	1,436
1992	1,518	725	5,429	1,215	694	1,957
1993	1,291	867	5,853	1,108	821	2,244
1994	1,235	955	6,133	993	893	2,344
1995	1,189	981	6,341	1,041	913	2,472
1996	1,124	678	6,787	834	629	2,677
1997	1,036	482	7,341	708	434	2,951
1998	901	412	7,830	624	359	3,216
1999	719	390	8,159	555	337	3,434
2000	911	395	8,675	625	344	3,715
2001	865	408	9,132	540	342	3,913
2002	753	394	9,491	555	334	4,134
2003	849	398	9,942	569	319	4,384
2004	877	372	10,447	536	298	4,622
2005	877	362	10,962	694	296	5,020
2006	783	356	11,389	576	286	5,310
2007	791	342	11,838	551	286	5,575
2008	775	357	12,256	514	290	5,799
2009	807	294	12,769	449	237	6,011
2010	767	295	13,241	489	236	6,264
2011	777	302	13,716	452	238	6,478
2012	797	320	14,193	412	260	6,630
2013	749	286	14,656	426	232	6,824
2014	787	280	15,621	329	212	7,979
2015	724	300	15,180	328	239	8,033
2016	738	283	15,629	352	217	8,252
2017	769	296	16,218	307	240	8,380
2018	711	--	16,306	299	--	8,305
Total	30,949	13,723		19,641	12,110	

The prevalence of reported HIV infection in Michigan on January 1, 2019 was 16,306 cases. The prevalence of stage 3 HIV infection, which is a subset of the overall HIV infection prevalence, was 8,305 cases. The HIV infection columns display data on all persons with HIV, including those with stage 3.

The number of reported deaths include those directly attributable to the presence of HIV infection as well as those due to other causes. Reported deaths for the most recent year is incomplete.

on January 1, 2019

Table 2. Demographic Information of Michigan Residents Living with HIV

Demographic Group	Estimated Prevalence	Reported HIV Infection							2018 Census Estimates	
		Non Stage 3		Stage 3		Total			Count	%
		Count	%	Count	%	Count	%	Rate per 100,000		
Total	18,970	8,001	100%	8,305	100%	16,306	100%	163.1	9,995,913	100%
Race/Ethnicity										
Black	10,570	4,448	56%	4,633	56%	9,081	56%	660.1	1,375,622	14%
Hispanic	1,110	479	6%	467	6%	946	6%	182.3	519,022	5%
White	6,520	2,737	34%	2,866	35%	5,603	34%	74.9	7,485,441	75%
Other	790	337	4%	339	4%	676	4%	109.8	615,828	6%
Asian/NH/PI	190	102	1%	57	<1%	159	<1%	47.3	336,015	3%
Am Indian/AN	50	21	<1%	17	<1%	38	<1%	66.7	57,011	<1%
Multi/Other	560	214	3%	265	3%	479	3%	215.0	222,802	2%
Gender & Race										
Male	14,780	6,194	77%	6,502	78%	12,696	78%	257.9	4,922,141	49%
Black	7,630	3,232	40%	3,319	40%	6,551	40%	1,003.3	652,956	7%
Hispanic	890	389	5%	369	4%	758	5%	287.1	264,050	3%
White	5,670	2,328	29%	2,540	31%	4,868	30%	131.5	3,701,253	37%
Other	610	245	3%	274	3%	519	3%	170.8	303,882	3%
Female	3,910	1,659	21%	1,700	20%	3,359	21%	66.2	5,073,772	51%
Black	2,720	1,104	14%	1,229	15%	2,333	14%	322.8	722,666	7%
Hispanic	210	84	1%	90	1%	174	1%	68.2	254,972	3%
White	820	384	5%	319	4%	703	4%	18.6	3,784,188	38%
Other	180	87	1%	62	<1%	149	<1%	47.8	311,946	3%
Transgender	300	148	2%	103	1%	251	2%	--	N/A	N/A
Black	230	112	1%	85	1%	197	1%	--	N/A	N/A
Hispanic	20	6	<1%	8	<1%	14	<1%	--	N/A	N/A
White	40	25	<1%	7	<1%	32	<1%	--	N/A	N/A
Other	10	5	<1%	3	<1%	8	<1%	--	N/A	N/A
Risk										
MSM*	10,420	4,570	57%	4,385	53%	8,955	55%	3,136.8	285,484	3%
PWID	1,110	330	4%	622	7%	952	6%	--	N/A	N/A
MSM/PWID	710	266	3%	341	4%	607	4%	--	N/A	N/A
Heterosexual	3,630	1,491	19%	1,627	20%	3,118	19%	--	N/A	N/A
Males	820	300	4%	404	5%	704	4%	--	N/A	N/A
Females	2,810	1,191	15%	1,223	15%	2,414	15%	--	N/A	N/A
Blood Products	60	18	<1%	33	<1%	51	<1%	--	N/A	N/A
Perinatal	220	112	1%	75	<1%	187	1%	--	N/A	N/A
Undetermined	2,840	1,214	15%	1,222	15%	2,436	15%	--	N/A	N/A
Current Age (in years)										
0-12	90	65	<1%	9	<1%	74	<1%	8.4	881,877	9%
13-19	200	140	2%	26	<1%	166	1%	17.2	963,461	10%
20-24	940	661	8%	140	2%	801	5%	115.3	694,627	7%
25-29	2,010	1,260	16%	467	6%	1,727	11%	248.7	694,454	7%
30-39	3,660	1,878	23%	1,260	15%	3,138	19%	261.1	1,201,887	12%
40-49	4,110	1,536	19%	1,991	24%	3,527	22%	295.5	1,193,411	12%
50-59	5,320	1,688	21%	2,877	35%	4,565	28%	331.7	1,376,426	14%
60+	2,690	773	10%	1,535	18%	2,308	14%	77.2	2,989,776	30%

*MSM Census estimate is 5.8% of the male population in Michigan (Lieb S, et al 2011. Statewide Estimation of Racial/Ethnic Populations of Men Who Have Sex with Men in the U.S.)

on January 1, 2019

Table 3. Demographic Information and Care and Viral Suppression (VS) Rates of Michigan Residents Living with HIV

Gender & Race/Risk	Current Age														
	<13 yrs			13-19			20-24			25-29			30-39		
	Count	Care Rate	VS Rate	Count	Care Rate	VS Rate	Count	Care Rate	VS Rate	Count	Care Rate	VS Rate	Count	Care Rate	VS Rate
Total	74	97%	96%	166	94%	82%	801	82%	80%	1,727	79%	78%	3,138	81%	86%
Male	38	95%	97%	120	90%	87%	677	82%	80%	1,417	78%	79%	2,393	81%	87%
Race															
Black	25	100%	96%	92	88%	84%	491	81%	77%	1,033	77%	75%	1,349	77%	84%
Hispanic	3	.	.	8	.	.	40	88%	89%	92	87%	82%	168	81%	92%
White	5	.	.	9	.	.	114	84%	94%	237	79%	93%	764	88%	92%
Other	5	.	.	11	100%	100%	32	85%	78%	55	79%	84%	112	84%	85%
Risk															
MSM	N/A	N/A	N/A	80	88%	83%	568	84%	80%	1,188	81%	80%	1,910	83%	88%
PWID	N/A	N/A	N/A	0	.	.	1	.	.	16	60%	83%	37	81%	80%
Heterosexual	N/A	N/A	N/A	1	.	.	13	62%	88%	30	76%	76%	99	79%	76%
Other/Unk	38	95%	97%	39	92%	91%	95	73%	78%	183	61%	72%	347	71%	88%
Female	36	100%	94%	38	100%	80%	92	80%	81%	250	85%	73%	667	81%	82%
Race															
Black	24	100%	92%	23	100%	83%	61	79%	86%	179	83%	70%	425	81%	80%
Hispanic	3	.	.	4	.	.	3	.	.	11	91%	70%	38	73%	88%
White	3	.	.	6	.	.	22	79%	82%	48	90%	80%	166	84%	86%
Other	6	.	.	5	.	.	6	.	.	12	92%	90%	38	86%	83%
Risk															
PWID	N/A	N/A	N/A	0	.	.	5	.	.	9	.	.	48	65%	64%
Heterosexual	N/A	N/A	N/A	9	.	.	64	81%	87%	177	86%	76%	528	84%	83%
Other/Unk	36	100%	94%	29	100%	82%	23	75%	67%	64	83%	69%	91	76%	86%
Transgender	0	.	.	8	.	.	32	86%	75%	60	82%	76%	78	79%	67%
Race															
Black	0	.	.	6	.	.	28	84%	76%	46	86%	75%	62	77%	71%
Hispanic	0	.	.	1	.	.	0	.	.	1	.	.	8	.	.
White	0	.	.	0	.	.	4	.	.	8	.	.	7	.	.
Other	0	.	.	1	.	.	0	.	.	5	.	.	1	.	.
Risk															
Sex with Male	N/A	N/A	N/A	8	.	.	32	86%	75%	57	83%	74%	75	78%	66%
Other/Unk	0	.	.	0	.	.	0	.	.	3	.	.	3	.	.



Continued on Next Page



Care and VS rates not shown for frequencies <10

on January 1, 2019

Table 3. Demographic Information and Care and Viral Suppression (VS) Rates of Michigan Residents Living with HIV (continued)

Gender & Race/Risk	Current Age											
	40-49			50-59			60+			Total		
	Count	Care Rate	VS Rate	Count	Care Rate	VS Rate	Count	Care Rate	VS Rate	Count	Care Rate	VS Rate
Total	3,527	84%	90%	4,565	85%	93%	2,308	87%	95%	16,306	84%	89%
Male	2,542	84%	90%	3,664	85%	93%	1,845	87%	96%	12,696	84%	90%
Race												
Black	1,198	83%	86%	1,558	83%	90%	805	83%	92%	6,551	81%	85%
Hispanic	204	73%	92%	170	80%	96%	73	92%	98%	758	81%	93%
White	1,016	88%	94%	1,806	88%	95%	917	90%	98%	4,868	88%	95%
Other	124	89%	91%	130	87%	94%	50	90%	100%	519	86%	90%
Risk												
MSM	1,810	87%	91%	2,592	88%	94%	1,195	90%	97%	9,343	86%	90%
PWID	59	78%	88%	205	78%	86%	234	76%	92%	552	77%	89%
Heterosexual	198	73%	85%	250	80%	88%	112	83%	90%	703	78%	85%
Other/Unk	475	77%	90%	617	80%	93%	304	84%	96%	2,098	77%	90%
Female	949	82%	88%	875	83%	92%	452	85%	93%	3,359	83%	87%
Race												
Black	687	81%	88%	605	82%	92%	329	84%	93%	2,333	82%	87%
Hispanic	50	88%	95%	45	74%	96%	20	89%	80%	174	82%	90%
White	178	86%	86%	193	83%	92%	87	87%	97%	703	85%	89%
Other	34	73%	88%	32	97%	87%	16	88%	100%	149	87%	85%
Risk												
PWID	86	78%	80%	149	79%	92%	102	78%	90%	399	77%	85%
Heterosexual	722	85%	89%	606	85%	93%	289	88%	95%	2,395	85%	89%
Other/Unk	141	71%	85%	120	73%	86%	61	84%	90%	565	78%	84%
Transgender	36	76%	100%	26	71%	94%	11	91%	100%	251	80%	78%
Race												
Black	29	79%	100%	19	71%	92%	7	.	.	197	81%	79%
Hispanic	4	.	.	0	.	.	0	.	.	14	79%	64%
White	3	.	.	7	.	.	3	.	.	32	74%	85%
Other	0	.	.	0	.	.	1	.	.	8	.	.
Risk												
Sex with Male	34	78%	100%	22	65%	92%	10	100%	100%	238	81%	77%
Other/Unk	2	.	.	4	.	.	1	.	.	13	73%	100%

Virally suppressed individuals have a better prognosis and are less likely to transmit the virus compared to unsuppressed individuals. Receiving routine care is the first step in achieving viral suppression (VS). The following groups struggle to obtain care, achieve VS, or both:

Hispanics and Latinxs have historically had lower care rates than the state average, but that gap was smaller in 2018. Fortunately those who are in care are extremely likely to be VS.

Other groups frequently not in care are transgender persons, PWID, heterosexual men, and 25-39 year olds.

Of those receiving care, all 13-39 year olds achieve VS at a low rate, as do African American/Black men, heterosexual men, and transgender persons.

*One black and one white female have unknown ages and are not included in this table; Care and VS rates not shown for frequencies <10

on January 1, 2019

Table 4. Current Residence of Persons Living with HIV in Michigan

Current County of Residence	Estimated Prevalence	Reported HIV Infection			Rate per 100,000	2018 Census Estimates
		Non Stage 3	Stage 3	Total		
Total	18,970	8,001	8,305	16,306	163.1	9,995,913
Detroit Metro Area	12,150	5,089	5,348	10,437	243.5	4,285,657
Lapeer Co.	60	24	25	49	55.7	88,028
Macomb Co.	1,450	642	599	1,241	141.9	874,759
Monroe Co.	130	47	58	105	69.8	150,439
Oakland Co.	2,410	1,010	1,061	2,071	164.5	1,259,201
St. Clair Co.	130	57	49	106	66.5	159,337
Wayne Co.: excl Detroit	2,410	1,019	1,048	2,067	191.2	1,081,231
Detroit	5,590	2,290	2,508	4,798	713.3	672,662
Out-state	6,740	2,853	2,932	5,785	101.3	5,710,256
Alcona Co.	10	0	2	2	--	10,362
Alger Co.	20	5	5	10	109.9	9,097
Allegan Co.	150	55	68	123	104.8	117,327
Alpena Co.	20	3	11	14	49.4	28,360
Antrim Co.	20	5	7	12	51.4	23,365
Arenac Co.	10	1	4	5	--	15,041
Baraga Co.	10	5	3	8	--	8,320
Barry Co.	30	9	12	21	34.3	61,157
Bay Co.	100	50	33	83	79.9	103,923
Benzie Co.	10	0	7	7	--	17,753
Berrien Co.	270	94	132	226	146.6	154,141
Branch Co.	30	10	8	18	41.3	43,622
Calhoun Co.	220	83	102	185	137.6	134,487
Cass Co.	30	10	13	23	44.5	51,653
Charlevoix Co.	20	8	6	14	53.3	26,244
Cheboygan Co.	20	6	9	15	59.0	25,413
Chippewa Co.	40	17	13	30	80.0	37,517
Clare Co.	50	15	21	36	117.0	30,757
Clinton Co.	60	18	25	43	54.2	79,332
Crawford Co.	10	1	3	4	--	13,901
Delta Co.	30	10	11	21	58.6	35,857
Dickinson Co.	10	1	3	4	--	25,383
Eaton Co.	110	44	47	91	82.9	109,826
Emmet Co.	20	8	6	14	42.0	33,308
Genesee Co.	670	305	270	575	141.3	406,892
Gladwin Co.	20	4	6	10	39.5	25,337
Gogebic Co.	10	1	7	8	--	15,096
Grand Traverse Co.	100	39	42	81	87.5	92,573
Gratiot Co.	40	13	13	26	64.0	40,599
Hillsdale Co.	20	3	12	15	32.8	45,749
Houghton Co.	20	6	9	15	41.4	36,219
Huron Co.	10	2	6	8	--	31,166
Ingham Co.	520	220	225	445	152.0	292,735
Ionia Co.	50	14	25	39	60.7	64,210

Continued on Next Page ↓

on January 1, 2019

Table 4. Current Residence of Persons Living with HIV in Michigan (continued)

Current County of Residence	Estimated Prevalence	Reported HIV Infection			Rate per 100,000	2018 Census Estimates
		Non Stage 3	Stage 3	Total		
Out-state (cntd)						
Iosco Co.	20	4	8	12	47.8	25,081
Iron Co.	10	5	1	6	--	11,117
Isabella Co.	60	23	23	46	65.2	70,562
Jackson Co.	240	96	109	205	129.1	158,823
Kalamazoo Co.	450	200	182	382	144.2	264,870
Kalkaska Co.	20	7	2	9	--	17,824
Kent Co.	1,200	522	503	1,025	156.8	653,786
Keweenaw Co.	10	1	0	1	--	2,113
Lake Co.	20	4	7	11	92.6	11,881
Leelanau Co.	10	2	6	8	--	21,764
Lenawee Co.	90	39	37	76	77.3	98,266
Livingston Co.	120	47	48	95	49.7	191,224
Luce Co.	10	2	3	5	--	6,283
Mackinac Co.	20	3	6	9	--	10,787
Manistee Co.	20	5	9	14	57.1	24,528
Marquette Co.	60	14	29	43	64.6	66,516
Mason Co.	20	4	11	15	51.5	29,100
Mecosta Co.	30	10	10	20	45.9	43,545
Menominee Co.	20	7	3	10	43.5	22,983
Midland Co.	40	17	17	34	40.9	83,209
Missaukee Co.	10	2	2	4	--	15,113
Montcalm Co.	50	16	19	35	54.7	63,968
Montmorency Co.	20	3	6	9	--	9,265
Muskegon Co.	210	86	91	177	102.0	173,588
Newaygo Co.	40	13	14	27	55.2	48,892
Oceana Co.	10	2	6	8	--	26,625
Ogemaw Co.	20	5	8	13	62.0	20,952
Ontonagon Co.	10	2	2	4	--	5,795
Osceola Co.	20	4	11	15	64.3	23,341
Oscoda Co.	10	6	2	8	--	8,276
Otsego Co.	20	9	6	15	60.8	24,665
Ottawa Co.	180	72	76	148	50.9	290,494
Presque Isle Co.	10	2	2	4	--	12,738
Roscommon Co.	20	4	11	15	62.8	23,884
Saginaw Co.	320	139	131	270	141.5	190,800
Sanilac Co.	30	13	10	23	55.8	41,182
Schoolcraft Co.	10	0	2	2	--	8,068
Shiawassee Co.	60	22	23	45	66.0	68,192
St. Joseph Co.	60	23	22	45	73.7	61,043
Tuscola Co.	20	5	9	14	26.7	52,516
Van Buren Co.	80	29	34	63	83.5	75,448
Washtenaw Co.	660	307	252	559	150.7	370,963
Wexford Co.	30	12	13	25	74.7	33,466
Prisons	100	59	25	84	N/A	N/A
Unknown	0	0	0	0	N/A	N/A

on January 1, 2019

Table 5. Current Residence and Care and Viral Suppression (VS) Rates of Persons Living with HIV in MI

Current Residence	Count	Care Rate	VS Rate	Current Residence	Count	Care Rate	VS Rate
Total	16,306	84%	89%	Select Counties (cntd)			
Detroit Metro Area	10,437	83%	88%	Newaygo Co.	27	89%	96%
Lapeer Co.	49	80%	97%	Ogemaw Co.	13	92%	92%
Macomb Co.	1,241	84%	89%	Osceola Co.	15	93%	100%
Monroe Co.	105	80%	92%	Otsego Co.	15	67%	100%
Oakland Co.	2,071	85%	92%	Ottawa Co.	148	86%	98%
St. Clair Co.	106	84%	90%	Roscommon Co.	15	93%	85%
Wayne Co.:excl Detroit	2,067	83%	90%	Saginaw Co.	270	87%	92%
Detroit	4,798	82%	84%	Sanilac Co.	23	68%	93%
Outstate	5,785	84%	92%	Shiawassee Co.	45	91%	95%
Select Counties of Current Residence				St. Joseph Co.	45	77%	97%
Alger Co.	10	100%	78%	Tuscola Co.	14	69%	78%
Allegan Co.	123	94%	95%	Van Buren Co.	63	77%	100%
Alpena Co.	14	100%	93%	Washtenaw Co.	559	85%	93%
Antrim Co.	12	83%	100%	Wexford Co.	25	83%	100%
Barry Co.	21	95%	95%	Select Cities of Current Residence			
Bay Co.	83	86%	93%	Adrian	47	85%	86%
Berrien Co.	226	79%	92%	Allen Park	33	90%	96%
Branch Co.	18	94%	94%	Alpena	13	100%	92%
Calhoun Co.	185	81%	94%	Ann Arbor	204	84%	95%
Cass Co.	23	70%	93%	Auburn Hills	34	88%	100%
Charlevoix Co.	14	79%	91%	Battle Creek	142	81%	95%
Cheboygan Co.	15	93%	100%	Bay City	67	89%	93%
Chippewa Co.	30	87%	85%	Belleville	52	88%	93%
Clare Co.	36	74%	88%	Benton Harbor	93	86%	87%
Clinton Co.	43	93%	90%	Berkley	20	95%	94%
Delta Co.	21	95%	95%	Berrien Springs	14	86%	92%
Eaton Co.	91	90%	87%	Birmingham	23	73%	100%
Emmet Co.	14	79%	91%	Bloomfield Hills	43	84%	97%
Genesee Co.	575	77%	88%	Brighton	26	85%	95%
Grand Traverse Co.	81	85%	91%	Brownstown	27	84%	85%
Gratiot Co.	26	92%	100%	Burton	34	77%	82%
Hillsdale Co.	15	92%	91%	Cadillac	14	85%	100%
Houghton Co.	15	93%	100%	Caledonia	14	85%	100%
Ingham Co.	445	88%	91%	Canton	91	81%	94%
Ionia Co.	39	92%	97%	Center Line	29	100%	81%
Iosco Co.	12	83%	100%	Charlotte	13	92%	100%
Isabella Co.	46	91%	90%	Chesterfield	29	85%	100%
Jackson Co.	205	86%	90%	Clarkston	26	92%	100%
Kalamazoo Co.	382	81%	91%	Clawson	20	76%	100%
Kent Co.	1,025	86%	92%	Clinton Township	170	83%	92%
Lake Co.	11	100%	80%	Coldwater	13	100%	92%
Lenawee Co.	76	87%	89%	Commerce Township	18	76%	92%
Livingston Co.	95	86%	91%	Comstock Park	21	86%	94%
Manistee Co.	14	86%	83%	Davison	20	68%	100%
Marquette Co.	43	93%	87%	Dearborn	101	74%	97%
Mason Co.	15	87%	100%	Dearborn Heights	87	89%	92%
Mecosta Co.	20	63%	100%	Detroit	4,799	82%	84%
Menominee Co.	10	90%	78%	Douglas	18	89%	94%
Midland Co.	34	82%	100%	East Lansing	26	88%	90%
Montcalm Co.	35	97%	91%	Eastpointe	132	84%	88%
Muskegon Co.	177	87%	92%	Ecorse	31	77%	96%

↓ Continued on next page

on January 1, 2019

Table 5. Current Residence and Care and Viral Suppression (VS) Rates of Persons Living with HIV in MI

Current Residence	Count	Care Rate	VS Rate	Current Residence	Count	Care Rate	VS Rate
Select Cities (cntd)				Select Cities (cntd)			
Escanaba	13	92%	92%	New Baltimore	19	95%	89%
Farmington	26	88%	95%	New Haven	20	90%	83%
Farmington Hills	101	79%	96%	Niles	31	69%	95%
Fennville	32	97%	97%	Northville	25	88%	90%
Fenton	17	71%	100%	Novi	48	77%	94%
Ferndale	136	93%	95%	Oak Park	109	86%	91%
Flat Rock	15	93%	85%	Okemos	20	80%	100%
Flint	386	78%	86%	Owosso	20	89%	94%
Flushing	20	84%	88%	Pleasant Ridge	13	100%	100%
Freeland	13	100%	92%	Plymouth	34	94%	86%
Garden City	32	83%	92%	Pontiac	329	82%	86%
Gaylord	14	64%	100%	Port Huron	48	82%	86%
Grand Blanc	39	81%	96%	Portage	46	87%	95%
Grand Haven	19	79%	100%	Redford	177	82%	87%
Grand Rapids	787	86%	91%	River Rouge	31	83%	96%
Grandville	18	89%	88%	Riverview	17	75%	100%
Grosse Pointe	63	90%	85%	Rochester	55	90%	95%
Hamtramck	83	85%	87%	Rockford	17	94%	100%
Harper Woods	56	81%	86%	Romulus	74	82%	90%
Harrison	19	72%	92%	Roseville	111	87%	88%
Harrison Township	32	80%	88%	Royal Oak	140	84%	96%
Haslett	14	86%	92%	Saginaw	240	87%	92%
Hazel Park	59	96%	94%	Saint Clair Shores	68	79%	94%
Highland Park	205	73%	85%	Saint Joseph	25	88%	100%
Holland	60	81%	98%	Saint Louis	13	100%	100%
Holly	16	93%	100%	Saugatuck	19	89%	94%
Holt	17	100%	94%	Shelby Township	43	80%	100%
Howell	32	81%	83%	South Haven	16	63%	100%
Hudsonville	22	90%	100%	South Lyon	13	92%	91%
Inkster	161	84%	87%	Southfield	377	85%	87%
Ionia	16	100%	93%	Southgate	38	81%	96%
Jackson	171	86%	89%	Sterling Heights	106	88%	92%
Kalamazoo	303	80%	89%	Sturgis	17	82%	92%
Kentwood	20	95%	100%	Taylor	134	83%	87%
Kincheloe	18	100%	94%	Three Rivers	22	71%	100%
Lake Orion	18	82%	86%	Traverse City	64	83%	90%
Lansing	405	88%	89%	Troy	63	92%	98%
Lapeer	20	94%	94%	Warren	313	83%	86%
Lathrup Village	21	95%	94%	Washington Township	16	75%	67%
Lincoln Park	72	86%	93%	Waterford	87	84%	94%
Livonia	78	87%	95%	Wayne	51	83%	84%
Macomb	47	93%	90%	West Bloomfield	69	82%	92%
Madison Heights	50	88%	93%	Westland	193	85%	87%
Marquette	22	100%	100%	White Lake	20	84%	94%
Marshall	15	73%	100%	Wixom	32	75%	100%
Melvindale	23	82%	100%	Wyandotte	30	77%	96%
Midland	31	81%	100%	Wyoming	87	86%	91%
Milan	17	94%	93%	Ypsilanti	301	83%	92%
Monroe	47	89%	94%				
Mount Clemens	81	77%	85%				
Mount Morris	21	76%	86%				
Mount Pleasant	35	91%	94%				
Muskegon	149	88%	91%				

During 2018

Table 6. Demographic Information of Michigan Residents Newly Diagnosed with HIV

Demographic Group	New HIV Diagnoses			2018 Census Estimates		New Stage 3	
	Count	% of Total	Rate per 100,000	Count	% of Total	Count	% of HIV Prevalence
Total	711	100%	7.1	9,995,913	100%	312	2%
Race/Ethnicity							
Black	410	58%	29.8	1,375,622	14%	179	2%
Hispanic	46	6%	8.9	519,022	5%	21	2%
White	222	31%	3.0	7,485,441	75%	98	2%
Other	33	5%	5.4	615,828	6%	14	2%
Asian/NH/PI	10	1%	3.0	336,015	3%	4	3%
Am Indian/AN	1	<1%	--	57,011	<1%	1	3%
Multi/Other	22	3%	9.9	222,802	2%	9	2%
Gender & Race							
Male	552	78%	11.2	4,922,141	49%	237	2%
Black	310	44%	47.5	652,956	7%	120	2%
Hispanic	38	5%	14.4	264,050	3%	18	2%
White	177	25%	4.8	3,701,253	37%	87	2%
Other	27	4%	8.9	303,882	3%	12	2%
Female	136	19%	2.7	5,073,772	51%	67	2%
Black	83	12%	11.5	722,666	7%	51	2%
Hispanic	8	1%	--	254,972	3%	3	2%
White	39	5%	1.0	3,784,188	38%	11	2%
Other	6	<1%	--	311,946	3%	2	1%
Transgender	23	3%	--	N/A	N/A	8	3%
Black	17	2%	--	N/A	N/A	8	4%
Hispanic	0	0%	--	N/A	N/A	0	0%
White	6	<1%	--	N/A	N/A	0	0%
Other	0	0%	--	N/A	N/A	0	0%
Risk							
MSM	346	49%	121.2	285,484	3%	145	2%
PWID	35	5%	--	N/A	N/A	23	2%
MSM/PWID	17	2%	--	N/A	N/A	6	1%
Heterosexual	122	17%	--	N/A	N/A	62	2%
Males	17	2%	--	N/A	N/A	16	2%
Females	105	15%	--	N/A	N/A	46	2%
Blood Products	0	0%	--	N/A	N/A	0	0%
Perinatal	3	<1%	--	N/A	N/A	1	1%
Undetermined	188	26%	--	N/A	N/A	75	3%
Age (in years)							
<13	1	<1%	--	881,877	9%	0	0%
13-19	43	6%	4.5	963,461	10%	4	2%
20-24	131	18%	18.9	694,627	7%	22	3%
25-29	166	23%	23.9	694,454	7%	58	3%
30-39	168	24%	14.0	1,201,887	12%	74	2%
40-49	91	13%	7.6	1,193,411	12%	59	2%
50-59	73	10%	5.3	1,376,426	14%	64	1%
60+	38	5%	1.3	2,989,776	30%	31	1%

New stage 3 includes persons who progressed to stage 3 last year. Newly diagnosed individuals who progressed to Stage 3 in the same year are counted in "New HIV Diagnoses" and "New Stage 3", however most only fall into one group. The "% of HIV prevalence" is the proportion of the demographic who progressed to stage 3 (denominator from table 2 - e.g. of PLWH in 2019, 2% progressed to stage 3).

During 2018

Table 7. Demographic Information and Linkage to Care Rates of Michigan Residents Newly Diagnosed with HIV

Gender & Race/Risk	Age at HIV Diagnosis														Total Linkage	
	13-19		20-24		25-29		30-39		40-49		50-59		60+			
	Count	Linkage Rate	Count	Linkage Rate	Count	Linkage Rate	Count	Linkage Rate	Count	Linkage Rate	Count	Linkage Rate	Count	Linkage Rate	Count	Linkage Rate
Total	43	65%	131	46%	166	43%	168	50%	91	54%	73	59%	38	55%	711	50%
Male	39	64%	103	45%	131	41%	125	50%	65	57%	58	64%	31	55%	552	51%
Race																
Black	33	67%	71	48%	86	34%	60	48%	27	52%	21	57%	12	50%	310	47%
Hispanic	3	.	8	.	8	.	8	.	6	.	2	.	3	.	38	53%
White	1	.	17	35%	31	55%	54	56%	26	69%	33	70%	15	60%	177	58%
Other	2	.	7	.	6	.	3	.	6	.	2	.	1	.	27	37%
Risk																
MSM	35	60%	80	46%	90	44%	72	49%	32	69%	28	75%	11	73%	348	53%
PWID	0	.	1	.	5	.	7	.	6	.	1	.	2	.	22	59%
Heterosexual	0	.	0	.	1	.	6	.	3	.	4	.	3	.	17	71%
Unknown	4	.	22	36%	35	31%	40	50%	24	42%	25	48%	15	33%	165	42%
Female	3	.	24	50%	30	47%	35	46%	23	48%	13	46%	7	.	136	48%
Race																
Black	0	.	14	57%	20	55%	19	42%	18	44%	9	.	3	.	83	46%
Hispanic	1	.	1	.	0	.	1	.	0	.	3	.	2	.	8	.
White	1	.	9	.	9	.	13	38%	4	.	1	.	2	.	39	41%
Other	1	.	0	.	1	.	2	.	1	.	0	.	0	.	6	.
Risk																
PWID	0	.	5	.	1	.	6	.	0	.	0	.	1	.	13	38%
Heterosexual	2	.	17	59%	23	48%	24	50%	19	47%	10	50%	4	.	99	54%
Unknown	1	.	2	.	6	.	5	.	4	.	3	.	2	.	24	29%
Transgender	1	.	4	.	5	.	8	.	3	.	2	.	0	.	23	52%
Race																
Black	1	.	3	.	4	.	6	.	1	.	2	.	0	.	17	59%
Hispanic	0	.	0	.	0	.	0	.	0	.	0	.	0	.	0	.
White	0	.	1	.	1	.	2	.	2	.	0	.	0	.	6	.
Other	0	.	0	.	0	.	0	.	0	.	0	.	0	.	0	.
Risk																
Sex with Male	1	.	4	.	5	.	7	.	2	.	2	.	0	.	21	52%
Unknown	0	.	0	.	0	.	1	.	1	.	0	.	0	.	2	.

The linkage rate is the proportion of those newly diagnosed who received a CD4, viral load, or genotype 8-30 days following diagnosis.
 <13 years of age is not listed due to small sample size - in 2017, 1 black female <13 years old with unknown risk was diagnosed and linked to care.

During 2018

Table 8. Residence at Diagnosis of Persons Newly Diagnosed with HIV in Michigan

Local Health Department Jurisdiction of residence at diagnosis	New HIV Diagnoses			2018 Census Estimates		New Stage 3 Diagnoses	
	Count	% of Total	Rate per 100,000	Count	%	Count	% of HIV Prevalence
Total	711	100%	7.1	9,995,913	100%	312	2%
Detroit Metro Area	474	67%	11.1	4,285,657	43%	201	2%
Lapeer County	4	<1%	--	88,028	<1%	2	4%
Macomb County	76	11%	8.7	874,759	9%	33	3%
Monroe County	9	1%	--	150,439	2%	3	3%
Oakland County	79	11%	6.3	1,259,201	13%	33	2%
St Clair County	5	<1%	--	159,337	2%	2	2%
Wayne Co.: excl Detroit	76	11%	7.0	1,081,231	11%	35	2%
Detroit	225	32%	33.4	672,662	7%	93	2%
Out-state	224	32%	3.9	5,710,256	57%	109	2%
Allegan County	2	<1%	--	117,327	1%	1	1%
Barry-Eaton	9	1%	--	170,975	2%	5	4%
Bay County	6	<1%	--	103,923	1%	1	1%
Benzie-Leelanau	0	0%	--	39,462	<1%	0	0%
Berrien County	3	<1%	--	154,141	2%	3	1%
Branch-Hillsdale-St. Joseph	6	<1%	--	150,394	2%	2	3%
Calhoun County	10	1%	7.4	134,487	1%	5	3%
Central Michigan District	4	<1%	--	188,843	2%	2	2%
Chippewa County	0	0%	--	37,517	<1%	0	0%
Delta-Menominee	0	0%	--	58,781	<1%	2	6%
Dickinson-Iron	2	<1%	--	36,415	<1%	0	0%
District 10	5	<1%	--	264,815	3%	2	1%
District 2	0	0%	--	64,540	<1%	1	3%
District 4	1	<1%	--	75,644	<1%	0	0%
Genesee County	31	4%	7.6	406,892	4%	14	2%
Grand Traverse County	2	<1%	--	92,573	<1%	1	1%
Huron County	0	0%	--	31,166	<1%	0	0%
Ingham County	13	2%	4.4	292,735	3%	5	1%
Ionia County	2	<1%	--	64,210	<1%	1	3%
Jackson County	0	0%	--	158,823	2%	4	2%
Kalamazoo County	15	2%	5.7	264,870	3%	4	1%
Kent County	39	5%	6.0	653,786	7%	25	2%
Lenawee County	8	1%	--	98,266	<1%	3	4%
Livingston County	4	<1%	--	191,224	2%	1	1%
Luce-Mack-Alger-School	0	0%	--	34,119	<1%	0	0%
Marquette County	0	0%	--	66,516	<1%	1	2%
Mid-Michigan District	2	<1%	--	183,869	2%	1	1%
Midland County	0	0%	--	83,209	<1%	0	0%
Muskegon County	9	1%	--	173,588	2%	1	1%
Northwest MI Com Hlth Agency	0	0%	--	107,523	1%	1	2%
Ottawa County	8	1%	--	290,494	3%	3	2%
Saginaw County	9	1%	--	190,800	2%	4	1%
Sanilac County	0	0%	--	41,182	<1%	0	0%
Shiawassee County	1	<1%	--	68,192	<1%	0	0%
Tuscola County	1	<1%	--	52,516	<1%	0	0%
Van Buren-Cass	3	<1%	--	127,100	1%	1	1%
Washtenaw County	29	4%	7.8	370,963	4%	15	3%
Western UP District	0	0%	--	67,424	<1%	0	0%
In Prison	13	2%	N/A	N/A	N/A	2	N/A

The "% of HIV prevalence" is the proportion of the demographic who progressed to stage 3 (denominator from table 2 - e.g. of PLWH in 2017, 2% progressed to stage 3).

Table 9. Residence at Diagnosis and Linkage to Care of Persons Newly Diagnosed with HIV in Michigan

Local Health Dept Jurisdiction of residence at diagnosis	Number of HIV Diagnoses	Linked in 9-30 days	Linked After 30 days	Ever Linked	Never Linked
Total	711	50%	40%	90%	10%
Detroit Metro Area	474	46%	44%	90%	10%
Out-state	224	57%	34%	91%	9%
Select Counties of Residence at Diagnosis					
Calhoun County	10	30%	60%	90%	10%
Genesee County	31	45%	32%	77%	23%
Ingham County	13	62%	38%	100%	0%
Kalamazoo County	15	53%	47%	100%	0%
Kent County	39	72%	23%	95%	5%
Macomb County	76	41%	46%	87%	13%
Oakland County	79	53%	43%	96%	4%
Washtenaw County	29	69%	21%	90%	10%
Wayne Co.: excl Detroit	13	92%	8%	100%	0%
Detroit	76	54%	39%	93%	7%
Select Cities of Residence at Diagnosis					
Ann Arbor	15	73%	20%	93%	7%
Battle Creek	10	30%	60%	90%	10%
Eastpointe	15	7%	87%	94%	7%
Flint	24	38%	33%	71%	29%
Grand Rapids	30	73%	20%	93%	7%
Kalamazoo	12	50%	50%	100%	0%
Lansing	15	60%	40%	100%	0%
Pontiac	12	17%	67%	84%	17%
Southfield	13	54%	46%	100%	0%
Sterling Heights	11	55%	36%	91%	9%
Warren	16	50%	38%	88%	13%
Ypsilanti	12	58%	25%	83%	17%

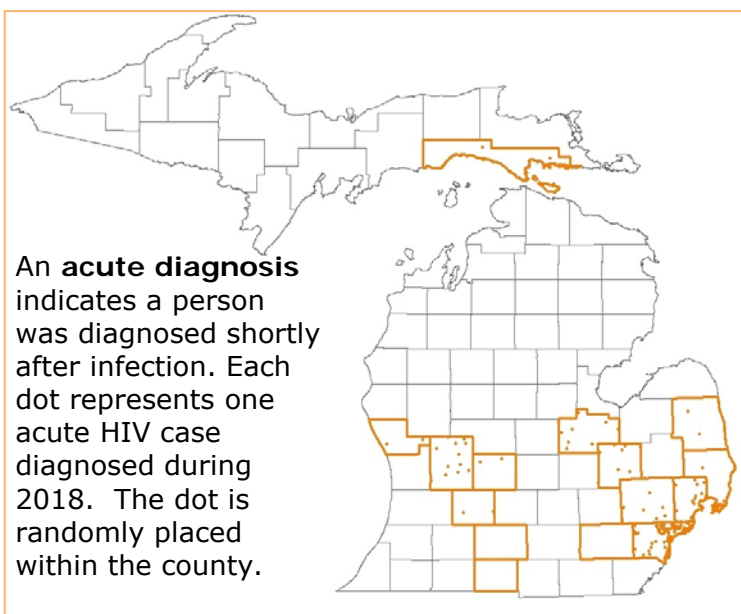


Table 10. Number of perinatal diagnoses during the past five years

Birth year	Confirmed HIV Positive
2014	3
2015	0
2016	2
2017	1
2018	0

For more information on HIV in Michigan, visit our website:

https://www.michigan.gov/mdhhs/0,5885,7-339-71550_2955_2982_72251-350111--,00.html