

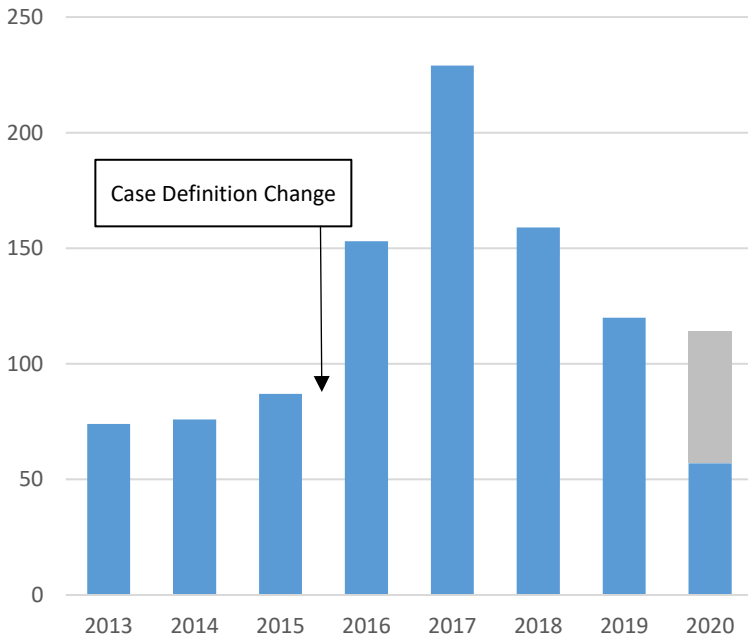
# Hepatitis C Virus Quarterly Surveillance Report (Quarter 2, 2020)

(Data referred 4/1/2020 through 6/30/2020—extracted 8/17/2020—Report released 11/20/2020)

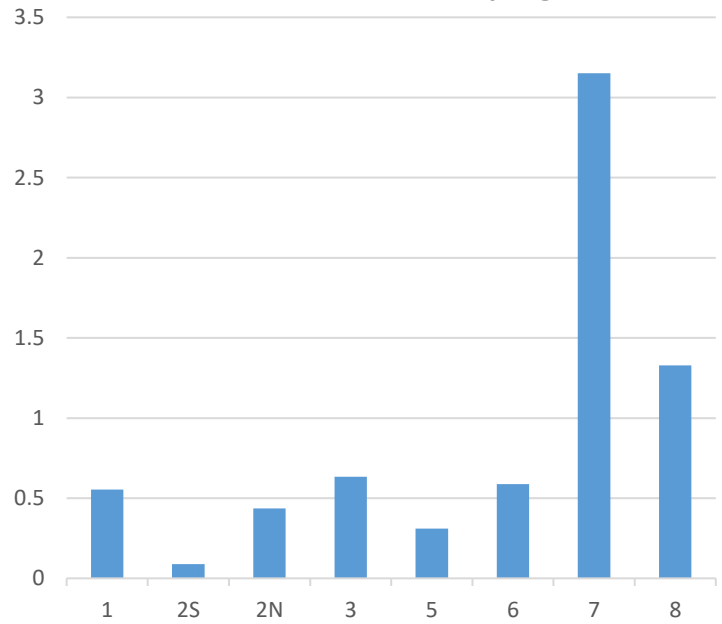
This monthly report is designed to inform local health departments of Hepatitis C Virus (HCV) cases reported to the Michigan Disease Surveillance System (MDSS) that may be related to injection drug use. These cases include all acute HCV cases and chronic HCV cases among persons aged 18 to 39. The purpose of the report is to highlight areas where transmission of HCV may be occurring among people who inject drugs. The goal is that, when warranted, this information will lead to more timely and effective public health intervention. Below are State-wide data trends. LHD-specific numbers can be found in the table that follows.

Please see our separate document on **Technical Notes** for how these data are obtained and defined and limitations to the data.

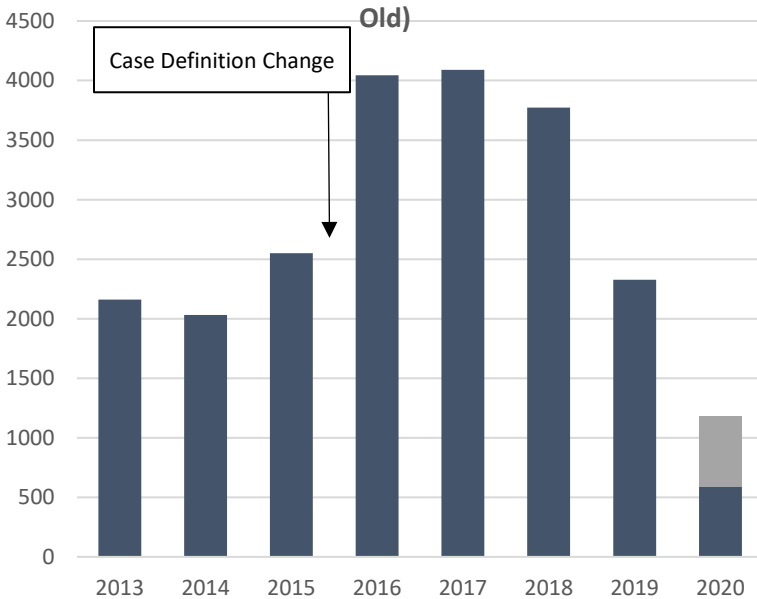
Annual Acute HCV Case Counts



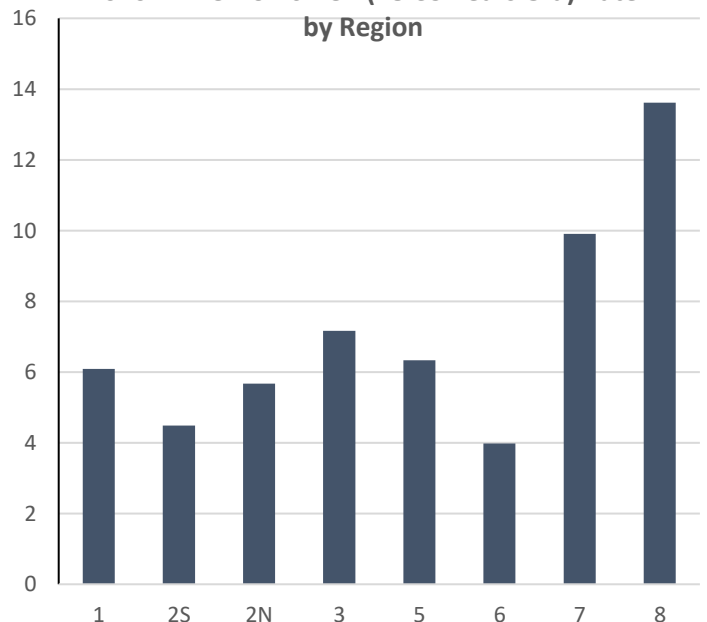
2020 YTD Acute HCV Rate by Region



Annual Chronic HCV Case Counts (18-39 Years Old)



2020 YTD Chronic HCV (18-39 Years Old) Rate by Region



County	LHI	Region	Acute HCV Cases (Current Quarter)	Acute HCV Cases (This Quarter 2018)	Acute HCV Cases (YTD)	Acute HCV Cases (2018 YTD)
Alcona	District Health Department #2	3	0	0	1	0
Alger	Luce-Mackinac-Alger-Schoolcraft	8	0	0	0	0
Allegan	Allegan	5	0	0	1	0
Alpena	District Health Department #4	7	0	0	1	0
Antrim	Northwest Michigan	7	0	0	0	1
Arenac	Central Michigan	3	0	0	0	0
Baraga	Western Upper Peninsula	8	0	0	0	0
Barry	Barry-Eaton	5	0	0	0	0
Bay	Bay	3	1	2	3	3
Benzie	Benzie-Leelanau	7	0	0	0	0
Berrien	Berrien	5	1	0	2	2
Branch	Branch-Hillsdale-St. Joseph	5	0	0	0	0
Calhoun	Calhoun	5	0	0	0	0
Cass	Van Buren-Cass	5	0	0	0	1
Charlevoix	Northwest Michigan	7	0	0	1	0
Cheboygan	District Health Department #4	7	0	1	1	1
Chippewa	Chippewa	8	0	0	0	1
Clare	Central Michigan	6	1	0	1	0
Clinton	Mid-Michigan	1	0	0	0	1
Crawford	District Health Department #10	7	1	0	2	1
Delta	Delta-Menominee	8	0	0	0	0
Detroit City	Detroit City	25	0	0	0	0
Dickinson	Dickinson-Iron	8	0	0	1	0
Eaton	Barry-Eaton	1	1	0	1	0
Emmet	Northwest Michigan	7	0	0	0	1
Genesee	Genesee	3	0	1	3	2
Gladwin	Central Michigan	3	0	1	0	1
Gogebic	Western Upper Peninsula	8	0	0	0	0
Grand Traverse	Grand Traverse	7	0	0	5	2
Gratiot	Mid-Michigan	1	0	0	0	0
Hillsdale	Branch-Hillsdale-St. Joseph	1	0	0	0	0
Houghton	Western Upper Peninsula	8	0	1	1	1
Huron	Huron	3	0	1	0	1
Ingham	Ingham	1	1	0	1	3
Ionia	Ionia	6	0	0	0	0
Iosco	District Health Department #2	3	0	1	0	1
Iron	Dickinson-Iron	8	0	0	1	0
Isabella	Central Michigan	6	0	0	1	0
Jackson	Jackson	1	2	4	4	6
Kalamazoo	Kalamazoo	5	0	0	0	1
Kalkaska	District Health Department #10	7	2	0	3	0
Kent	Kent	6	0	1	2	3

County	LHJ	Region	Acute HCV Cases (Current Quarter)	Acute HCV Cases (This Quarter 2018)	Acute HCV Cases (YTD)	Acute HCV Cases (2018 YTD)
Keweenaw	Western Upper Peninsula	8	0	0	0	0
Lake	District Health Department #10	6	1	0	1	0
Lapeer	Lapeer	3	0	0	0	0
Leelanau	Benzie-Leelanau	7	0	0	0	0
Lenawee	Lenawee	1	0	1	0	1
Livingston	Livingston	1	0	0	0	0
Luce	Luce-Mackinac-Alger-Schoolcraft	8	0	0	0	0
Mackinac	Luce-Mackinac-Alger-Schoolcraft	8	0	0	0	0
Macomb	Macomb	2N	2	9	7	13
Manistee	District Health Department #10	7	0	0	0	0
Marquette	Marquette	8	0	0	1	1
Mason	District Health Department #10	6	1	0	1	0
Mecosta	District Health Department #10	6	0	0	0	0
Menominee	Delta-Menominee	8	0	1	0	1
Midland	Midland	3	0	0	0	0
Missaukee	District Health Department #10	7	0	0	0	0
Monroe	Monroe	2S	0	0	0	0
Montcalm	Mid-Michigan	6	0	0	0	0
Montmorency	District Health Department #4	7	0	0	0	0
Muskegon	Muskegon	6	0	1	0	3
Newaygo	District Health Department #10	6	0	0	0	0
Oakland	Oakland	2N	0	0	0	2
Oceana	District Health Department #10	6	0	0	0	0
Ogemaw	District Health Department #2	3	0	0	0	0
Ontonagon	Western Upper Peninsula	8	0	0	0	0
Osceola	Central Michigan	6	0	0	0	0
Oscoda	District Health Department #2	3	0	0	0	0
Otsego	Northwest Michigan	7	0	0	0	0
Ottawa	Ottawa	6	2	0	3	0
Presque Isle	District Health Department #4	7	0	0	1	0
Roscommon	Central Michigan	7	0	0	0	0
Saginaw	Saginaw	3	0	0	0	0
St Clair	St Clair	2N	1	0	3	1
St Joseph	Branch-Hillsdale-St. Joseph	5	0	0	0	0
Sanilac	Sanilac	3	0	0	0	0
Schoolcraft	Luce-Mackinac-Alger-Schoolcraft	8	0	0	0	0
Shiawassee	Shiawassee	1	0	0	0	0
Tuscola	Tuscola	3	0	0	0	0
Van Buren	Van Buren-Cass	5	0	1	0	1
Washtenaw	Washtenaw	2S	0	0	0	2
Wayne	Wayne	2S	0	2	2	7
Wexford	District Health Department #10	7	0	0	0	0
MDOC	Michigan Department of Corrections	MDOC	0	0	2	0
<b>STATEWIDE</b>			17	28	57	65

County	LHJ	Region	Chronic HCV Cases, Adults Under 40 (Current Quarter)	Chronic HCV, Adults Under 40 (This Quarter 2018)	Chronic HCV Cases, Adults Under 40 (YTD)	Chronic HCV Cases, Adults Under 40 (YTD 2018)
Alcona	District Health Department #2	3	0	0	0	<5
Alger	Luce-Mackinac-Alger-Schoolcraft	8	0	0	0	0
Allegan	Allegan	5	0	<5	<5	7
Alpena	District Health Department #4	7	<5	7	<5	10
Antrim	Northwest Michigan	7	0	<5	<5	5
Arenac	Central Michigan	3	0	<5	<5	<5
Baraga	Western Upper Peninsula	8	0	<5	<5	6
Barry	Barry-Eaton	5	<5	0	<5	<5
Bay	Bay	3	<5	11	8	19
Benzie	Benzie-Leelanau	7	0	0	0	<5
Berrien	Berrien	5	<5	8	11	12
Branch	Branch-Hillsdale-St. Joseph	5	<5	<5	6	6
Calhoun	Calhoun	5	<5	12	5	22
Cass	Van Buren-Cass	5	<5	<5	6	<5
Charlevoix	Northwest Michigan	7	<5	<5	<5	5
Cheboygan	District Health Department #4	7	<5	<5	<5	<5
Chippewa	Chippewa	8	8	<5	9	10
Clare	Central Michigan	6	0	<5	7	<5
Clinton	Mid-Michigan	1	0	<5	<5	<5
Crawford	District Health Department #10	7	0	<5	0	<5
Delta	Delta-Menominee	8	<5	6	<5	7
Detroit City	Detroit City	25	19	34	19	73
Dickinson	Dickinson-Iron	8	<5	<5	<5	<5
Eaton	Barry-Eaton	1	5	6	9	14
Emmet	Northwest Michigan	7	<5	<5	<5	<5
Genesee	Genesee	3	9	28	32	59
Gladwin	Central Michigan	3	<5	<5	<5	5
Gogebic	Western Upper Peninsula	8	0	0	<5	0
Grand Traverse	Grand Traverse	7	<5	8	<5	15
Gratiot	Mid-Michigan	1	0	<5	<5	6
Hillsdale	Branch-Hillsdale-St. Joseph	1	<5	8	<5	10
Houghton	Western Upper Peninsula	8	5	<5	5	6
Huron	Huron	3	<5	<5	<5	<5
Ingham	Ingham	1	7	17	22	37
Ionia	Ionia	6	<5	<5	6	<5
Iosco	District Health Department #2	3	<5	<5	<5	<5
Iron	Dickinson-Iron	8	0	<5	<5	<5
Isabella	Central Michigan	6	<5	10	10	16
Jackson	Jackson	1	<5	9	9	21
Kalamazoo	Kalamazoo	5	<5	20	17	32
Kalkaska	District Health Department #10	7	<5	<5	<5	<5
Kent	Kent	6	<5	44	11	79
Keweenaw	Western Upper Peninsula	8	0	<5	0	<5

County	LHJ	Region	Chronic HCV Cases, Adults Under 40 (Current Quarter)	Chronic HCV, Adults Under 40 (This Quarter 2018)	Chronic HCV Cases, Adults Under 40 (YTD)	Chronic HCV Cases, Adults Under 40 (YTD 2018)
Lake	District Health Department #10	6	0	0	0	<5
Lapeer	Lapeer	3	<5	9	5	16
Leelanau	Benzie-Leelanau	7	0	<5	0	<5
Lenawee	Lenawee	1	<5	7	6	15
Livingston	Livingston	1	<5	7	10	13
Luce	Luce-Mackinac-Alger-Schoolcraft	8	<5	<5	<5	<5
Mackinac	Luce-Mackinac-Alger-Schoolcraft	8	<5	0	<5	0
Macomb	Macomb	2N	12	53	46	119
Manistee	District Health Department #10	7	<5	<5	6	<5
Marquette	Marquette	8	<5	<5	13	11
Mason	District Health Department #10	6	0	<5	<5	9
Mecosta	District Health Department #10	6	0	<5	0	<5
Menominee	Delta-Menominee	8	0	0	0	<5
Midland	Midland	3	<5	6	6	11
Missaukee	District Health Department #10	7	<5	<5	<5	<5
Monroe	Monroe	2S	13	21	23	30
Montcalm	Mid-Michigan	6	0	8	<5	14
Montmorency	District Health Department #4	7	0	<5	<5	<5
Muskegon	Muskegon	6	0	15	9	29
Newaygo	District Health Department #10	6	<5	<5	<5	5
Oakland	Oakland	2N	22	47	68	84
Oceana	District Health Department #10	6	<5	<5	<5	<5
Ogemaw	District Health Department #2	3	<5	<5	<5	<5
Ontonagon	Western Upper Peninsula	8	<5	0	<5	0
Osceola	Central Michigan	6	<5	<5	<5	5
Oscoda	District Health Department #2	3	0	0	<5	<5
Otsego	Northwest Michigan	7	<5	5	<5	8
Ottawa	Ottawa	6	<5	9	<5	15
Presque Isle	District Health Department #4	7	0	<5	<5	<5
Roscommon	Central Michigan	7	<5	<5	5	5
Saginaw	Saginaw	3	<5	12	13	33
St Clair	St Clair	2N	5	20	16	30
St Joseph	Branch-Hillsdale-St. Joseph	5	<5	<5	5	7
Sanilac	Sanilac	3	0	7	5	8
Schoolcraft	Luce-Mackinac-Alger-Schoolcraft	8	0	0	0	0
Shiawassee	Shiawassee	1	<5	<5	<5	11
Tuscola	Tuscola	3	0	<5	<5	<5
Van Buren	Van Buren-Cass	5	<5	<5	6	6
Washtenaw	Washtenaw	2S	0	<5	0	14
Wayne	Wayne	2S	28	59	60	126
Wexford	District Health Department #10	7	<5	<5	<5	<5
MDOC	Michigan Department of Corrections	MDOC	<5	64	7	150
<b>STATEWIDE</b>			<b>223</b>	<b>666</b>	<b>591</b>	<b>1337</b>

## Technical Notes

### Hepatitis C Virus Monthly Surveillance Report

Data in this report should be interpreted with caution and with acknowledgement of the limitations. Please direct any questions or comments regarding this report or the methods to the MDHHS Viral Hepatitis Unit ([MDHHS-Hepatitis@michigan.gov](mailto:MDHHS-Hepatitis@michigan.gov))

#### Acute and Chronic HCV Infection

- Acute HCV and Chronic HCV data are obtained from the Michigan Disease Surveillance System ([MDSS](#)).
- Only completed cases meeting CDC/CSTE case definitions ([CSTE hepatitis case definitions](#)) are pulled for inclusion in the report. Included in the analysis are:
  - All Probable and Confirmed Acute HCV cases
  - Probable and Confirmed Chronic HCV cases between the ages of 18 and 39
- Cases are pulled no earlier than 30 days from the end of the reporting month (e.g. January data is extracted no earlier than March 1<sup>st</sup>). These data are not finalized and are subject to change throughout the year.
- It should be noted that CDC/CSTE case definitions for acute and chronic HCV were significantly changed in calendar year 2016 ([acute](#) and [chronic](#)). Therefore, increases in acute and chronic HCV cases in 2016 may be reflective of the change in case counting methods and not necessarily an increase in new cases.

For acute and chronic HCV acquisition, complete risk factor information is needed in order for MDHHS to identify trends in transmission related to injection drug use, health care transmission, and emerging risk factors. The temporality of chronic HCV infections is often unknown due to the lack of symptoms and awareness of the time of infection. Timely and comprehensive follow-up is needed in order to maximize the effectiveness of this report.

#### Regional Rates and Projections

- Year to date case rates are stratified by Michigan Public Health Preparedness Regions (MPHPR). A map of the MPHPRs can be accessed here ([Regional Map](#)).
- Cases from the Michigan Department of Corrections (MDOC) are removed from regional case rates.
- Rates are calculated using Census population estimates as of July 1, 2018.
- The projected number of cases in 2020 is calculated by multiplying the year to date cases by the proportion of months remaining in the year.

***Due to resource and provider accessibility constraints resulting from the COVID-19 pandemic response, 2020 counts will appear to be reduced. Cases currently in the process of investigation are not reflected in these aggregate counts. Thus, caution should be used when interpreting these data comparatively.***