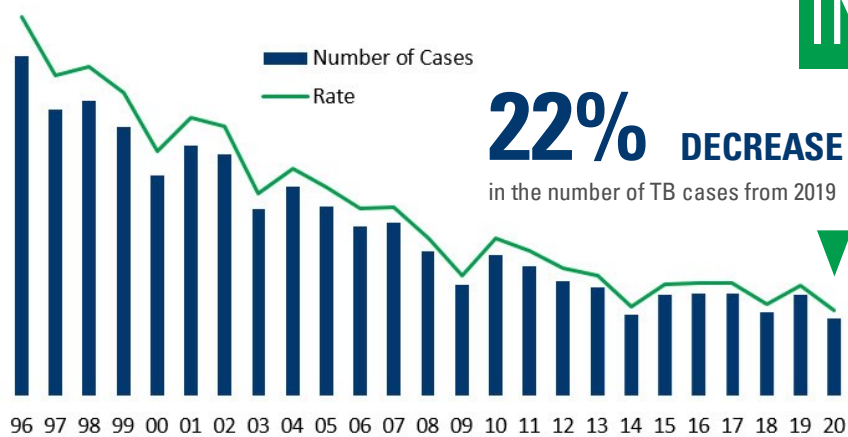


TUBERCULOSIS

IN MICHIGAN, 2020

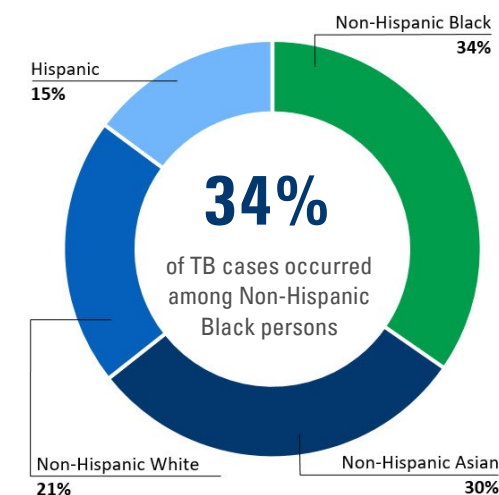
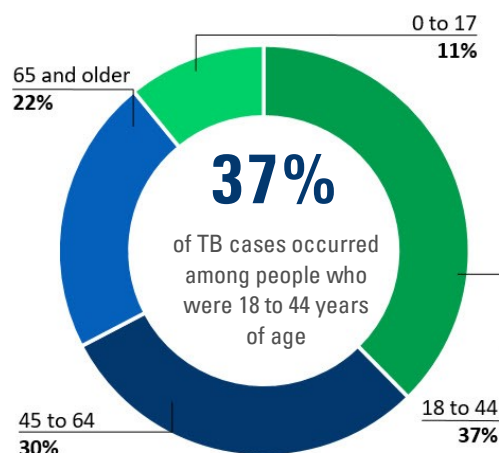


101 | Number of TB cases verified in MI in 2020

1.0 | MI statewide TB rate per 100,000 people

DEMOGRAPHIC CHARACTERISTICS

58%
of TB cases occurred among males



CLINICAL CHARACTERISTICS

3% | Proportion of TB cases reported with known HIV-positive status

12% | Proportion of TB cases also reported as confirmed COVID-19 cases

69% | Proportion of TB cases reported with a pulmonary site of disease

COUNTRY OF BIRTH



28 | Number of countries of birth represented among patients with TB disease

MOST COMMON COUNTRIES OF BIRTH:



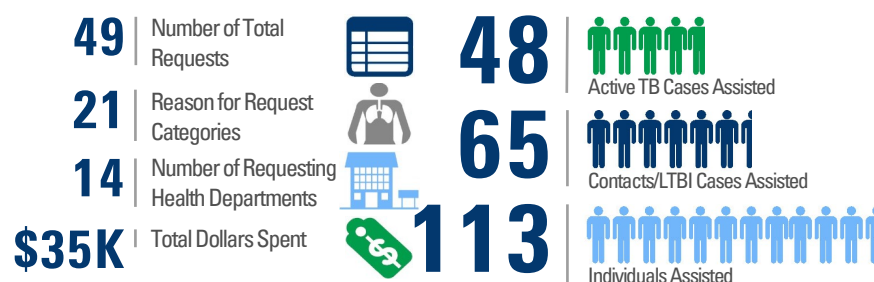
DRUG RESISTANCE

14 | Number of patients diagnosed in 2020 who had any drug resistance

0 | Number of patients diagnosed in 2020 who had multidrug resistant (MDR) TB, defined as a TB strain resistant to Isoniazid and Rifampin, the two most important and effective drugs in the TB treatment regimen

9 | Number of patients diagnosed in 2020 who had Isoniazid mono-resistance

INCENTIVES AND ENABLERS



Created March 2021

Adapted from the New York City Bureau of Tuberculosis Control 2017 Annual Summary, p. 5
<https://www1.nyc.gov/assets/doh/downloads/pdf/tb/tb2017.pdf>