

# State Opioid Response No Cost Extension

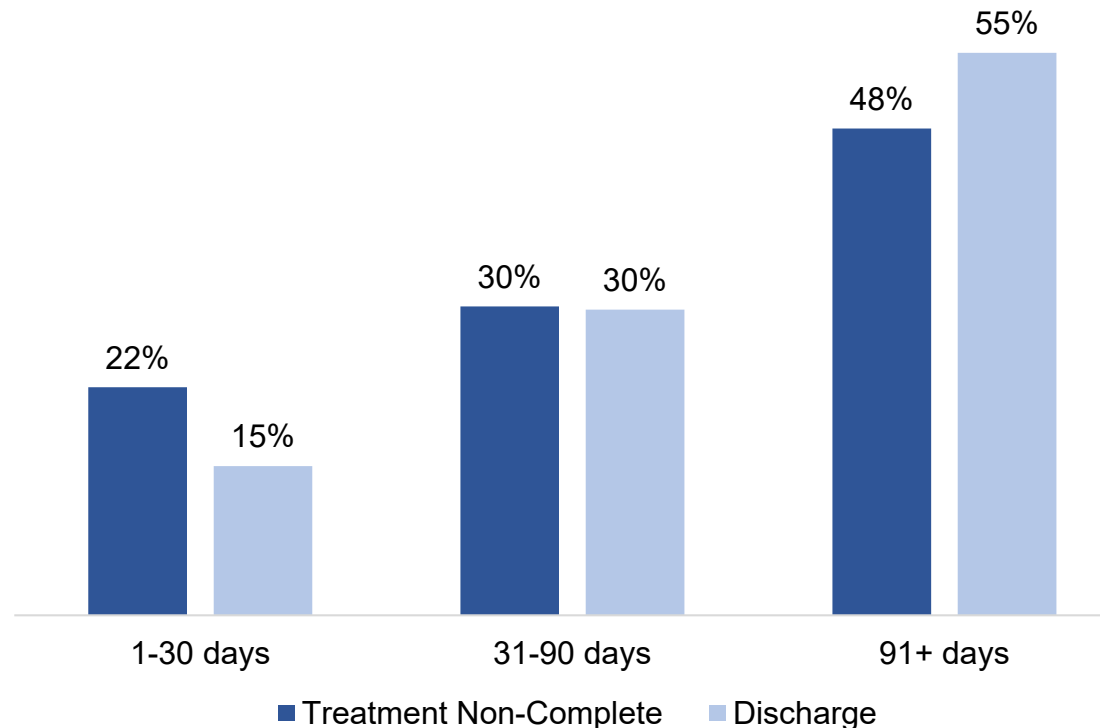
## Duration of treatment and/or recovery services by treatment non-complete vs. discharge clients

This graphic compares the duration of treatment and/or recovery services between treatment non-complete clients and clients discharged from programming. Treatment non-complete clients have either been terminated from programming or stopped engaging in programming. These clients are no longer receiving services

- Clients engaged in treatment for longer periods (91+ days) are more likely to be discharged rather than drop out or be terminated from programming
- Clients engaged in treatment for shorter periods (30 days or less) are more likely to drop out or be terminated from treatment

There may be an association between the duration of services in a program and program completion – the longer a client is in a program, the more likely they are to discharge from programming rather than stop engaging or being terminated.

### Duration of treatment and/or recovery services



**WAYNE STATE**  
School of Social Work

