

Table of Contents

VIEW BENEFITS	1
UNIQUE PHONE NUMBER AND EMAIL	1
MI BRIDGES BROWSER.....	1
MI BRIDGES USERNAME	1
APPENDIX	2
SCREENSHOTS:.....	2 - 5

View Benefits

Figure	Update
1	View Benefits. A new link to view the Restaurant Meal Plan Program when applicable to view participating restaurants beginning June 19, 2021.

Unique Phone Number and Email

Figure	Update
2 - 3	Unique Phone Number and Email. A message when a MI Bridges user attempts to log in letting them know the phone number or email address is used in another account. It is recommended to update the phone number or email address by November 2021.

MI Bridges Browser

Figure	Update
4	MI Bridges Browser. A message advising the internet browser they are using is no longer supported.

MI Bridges Username

Figure	Update
5	MI Bridges Username. A specific message “Please update your information to the appropriate format”. MI Login usernames starting with a “@” cannot be used to sign into MI Bridges. Please create a new account to access MI Bridges.
6 -7	MI Bridges Username. MI Bridges username message: a username must begin with a letter and end with a letter or a number.

Appendix

Screenshots:

MI Bridges Home Apply for Benefits To Do List Benefits Resources Settings Logout

View Benefits

Food Assistance Program (FAP)
You will receive \$505 on 7/13/2019.
[Show Benefit Details](#)

Child Development & Care (CDC)
Your payment is \$100 every 2 weeks.
[Show Benefit Details](#)

! Good news! Based on the benefits you're enrolled in, you are able to use your Bridge card for meals at participating restaurants. [View Participating Restaurants](#)

Food Assistance Program (FAP)

[Back to Household Members](#)

Benefit Details ^

PARTICIPANTS ⓘ	PAYMENT AMOUNT ⓘ	NEXT PAYMENT ⓘ	RENEWAL DUE DATE ⓘ
Tamara, Matthew, Bre... (4) Show All	\$505	\$505	01/30/2020

Use & Stretch Benefits ^

- Get double the fruits and veggies at participating grocery stores and farmers markets using the Double Up Food Bucks Program.
 - Find a [location](#) near you.
- Your EBT card will arrive in 5-7 business days. If you need to replace your card call 888-678-8914.
- Other resources that might be helpful:
 - [Find food pantries, food banks, and other emergency food assistance](#)
 - [Get food vouchers that you can exchange for groceries or meals](#)
 - [Get baby food or formula](#)

Have additional questions about your MDHHS benefits? Visit our [Help Page](#) or contact your local [MDHHS Office](#).

Figure 1: View Benefits

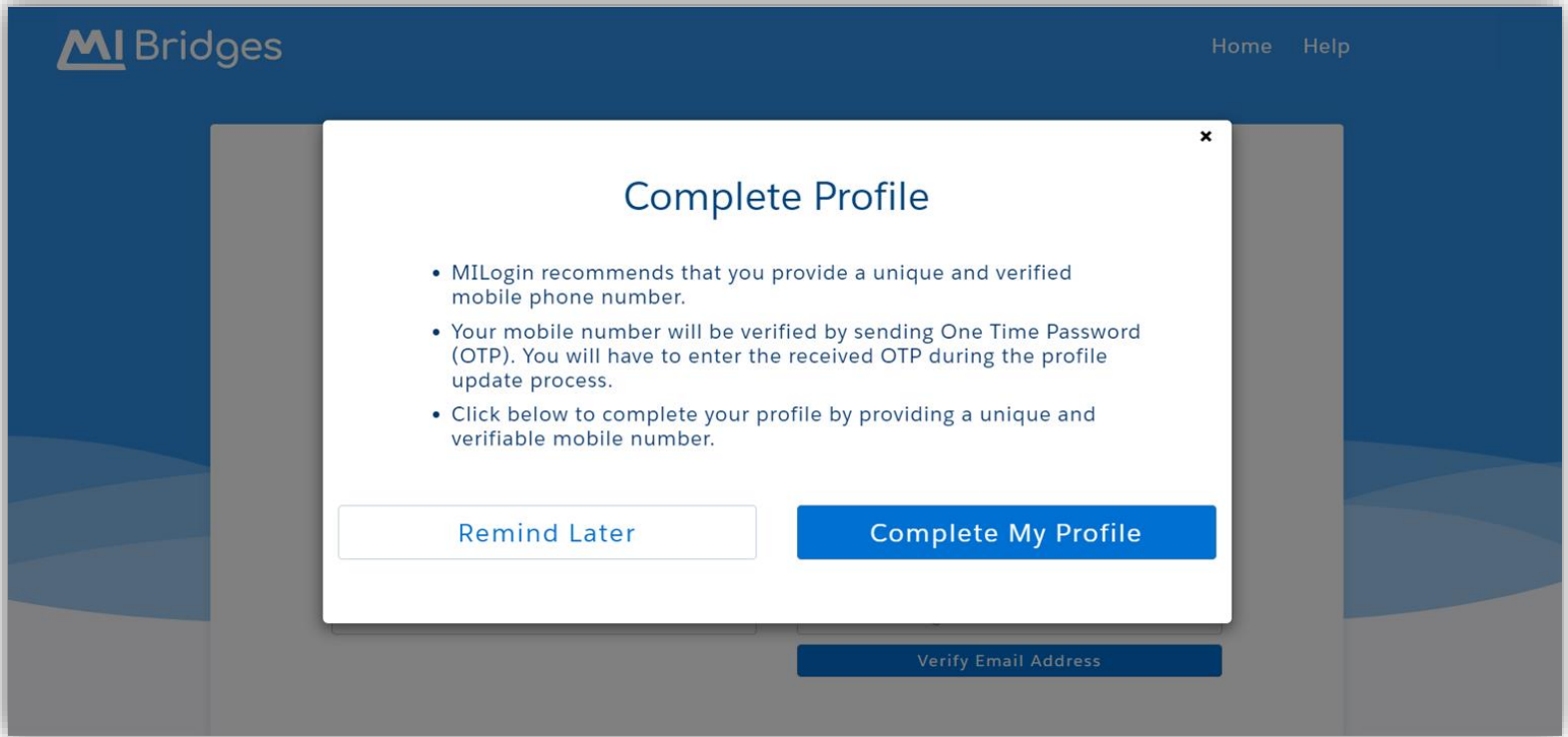


Figure 2: Unique Phone Number and Email

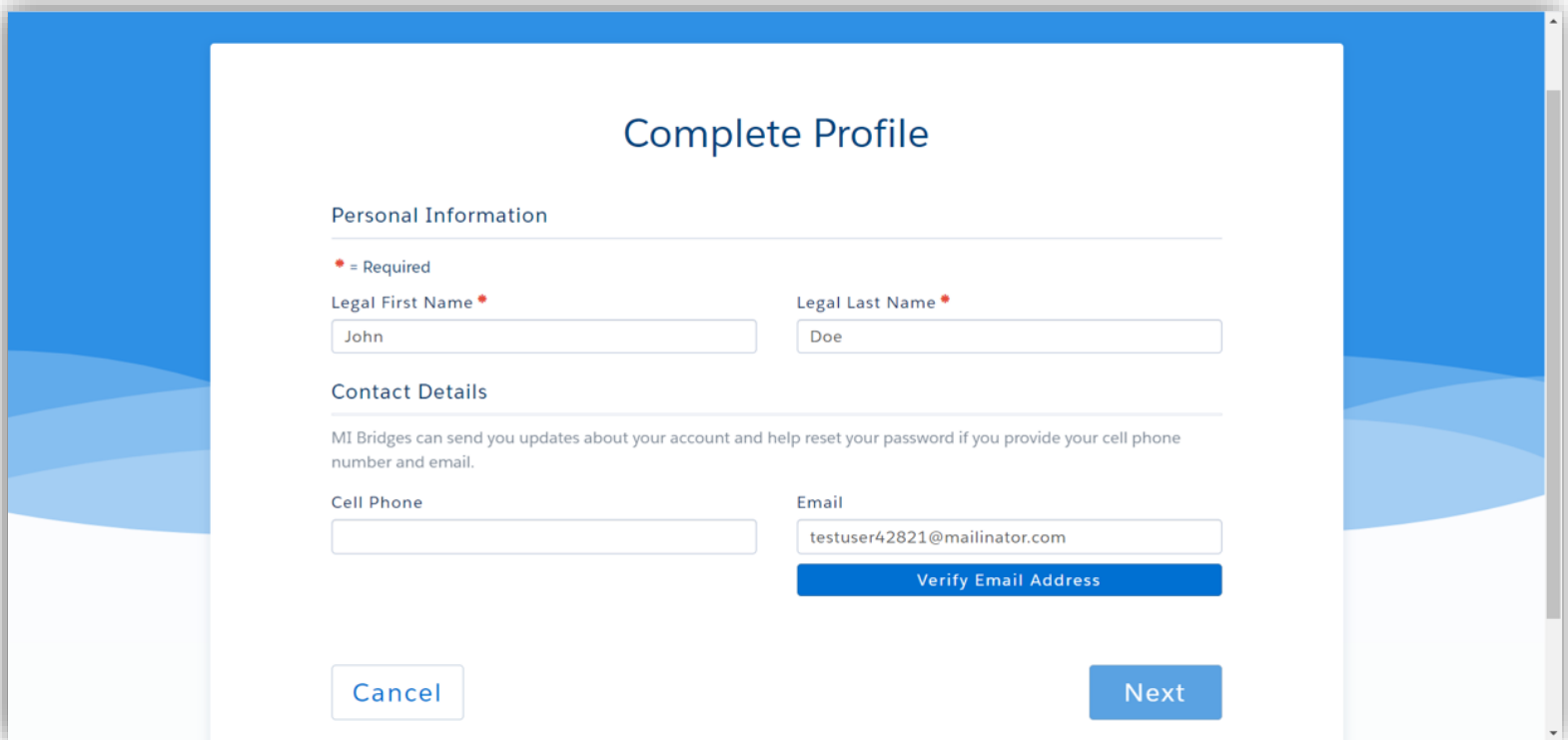


Figure 3: Unique Phone Number and Email

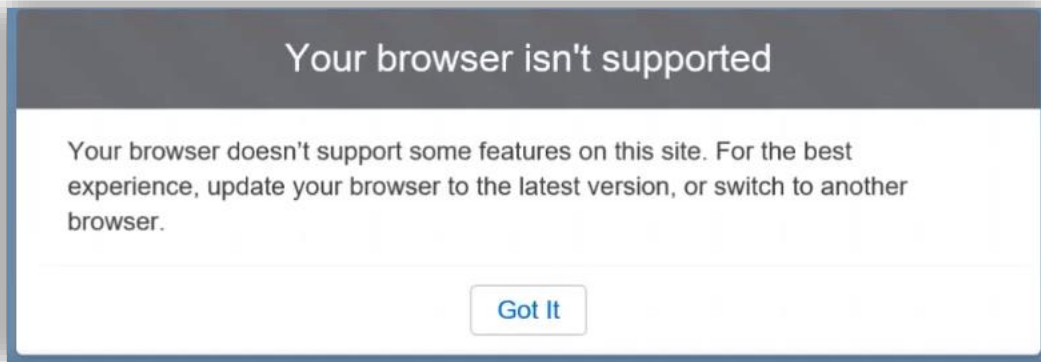


Figure 4: MI Bridges Browser

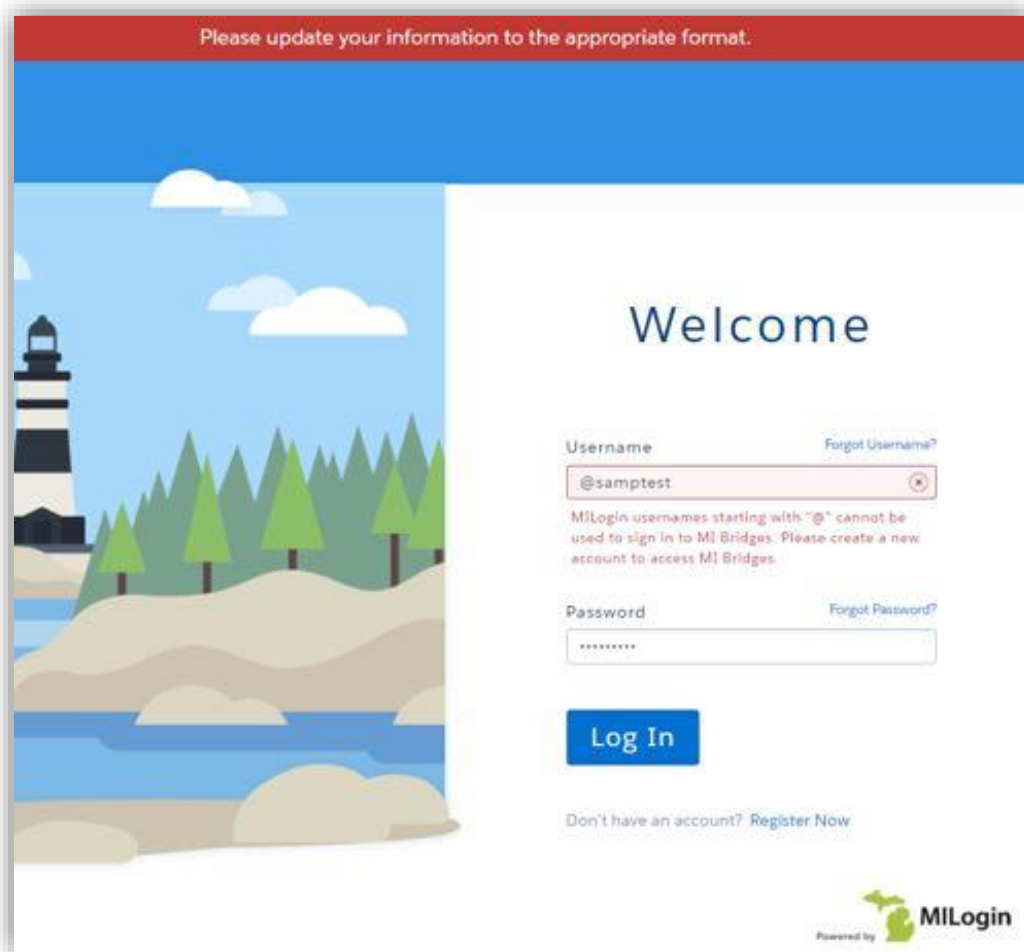


Figure 5: Username

Username and Security

Username and Password

• = Required

Password Guidelines

Password must be 8 characters, not based on username, and include characters from 3 of the following categories:

Username •

Usernames must begin with a letter.

Figure 6: Username

Username and Security

Username and Password

• = Required

Password Guidelines

Password must be 8 characters, not based on username, and include characters from 3 of the following categories:

Username •

Usernames must end with a letter or number.

Figure 7: Username