

ENVIRONMENTAL CLEANING & DISINFECTION

For Healthcare Administration

7/19/2023

AGENDA

- EVS is Infection Prevention
- Communication
- Education
- Auditing
- Knowing your Product
- *C. auris*



EVS IS INFECTION PREVENTION



ADMISSIONS

Identify & Inform



INFECTION PREVENTION

Inform, educate and monitor.



EVS

Managing TRANSMISSION through cleaning & disinfecting



CLINICAL STAFF

Share medical equipment



CASE MANAGERS

Discharges

PIECES OF THE PUZZLE

- **Communication**
- **Education & Training**
- **Product Selection**
- **Auditing**



COMMUNICATION



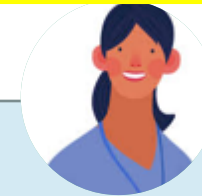
SIGNAGE

- Type of precautions
- Required PPE
- Standard signage



LINE LISTS

- Who?
- Where?
- For how long?



STAFF

- Who is notified?
- Who does the notifying?

STAFF EDUCATION

- Daily huddles
 - Patient movement
 - Product education
 - Shift expectations
- Competencies
 - Skill-based
 - Vary with location



Who Cleans What and When?

*Template for healthcare facilities to ensure that all surfaces, devices, and equipment are properly cleaned at the right times by the right staff.
Please modify this template as needed. Below are just some examples of various surfaces that should be covered!*

Facility name: _____ Unit: _____ Update date: _____ Approved by: _____



Area/Device/Equipment	EVS	Frequency	Nursing	Frequency	Other (Specify)	Frequency
Anesthesia equipment and controls						
Bathroom sink						
Bed rail/controls						
Bed table						
Bedside cabinet & other furniture						
Bladder scanner						
Blood pressure cuffs, sphygmomanometer						
Call box, button, and cords						
Computer keyboard						
Computer monitor, keyboard, mouse, cart						
Corridor railing						
Dispensers for towels, soap, sanitizer, etc.						
Door knob/handle, push plates (in/out of room)						
Feeding pumps, stands						
Glove box holders						
Infusion pumps and control						
ISO holder						
IV poles						
Light switch						

AUDITING



CHECKLISTS

- Who Cleans What chart
- Specific task lists per area



VISUAL

- **Watching** staff clean rooms
 - Terminal
 - Daily
 - Procedure areas

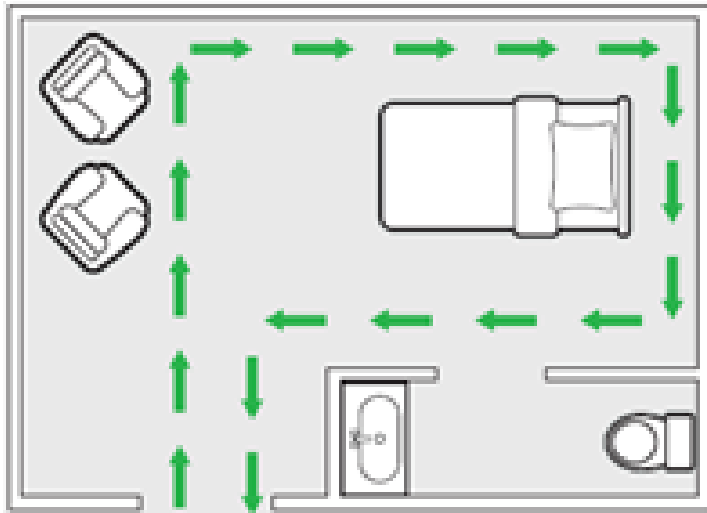


HIDDEN AUDITS

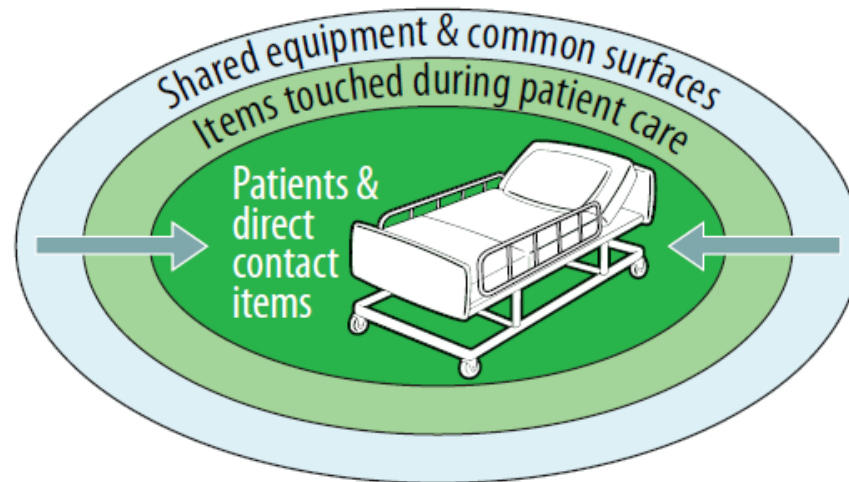
- GloGerm
- Florescent markers
- ATP

HOW TO PREVENT CROSS CONTAMINATION DURING THE CLEANING PROCESS

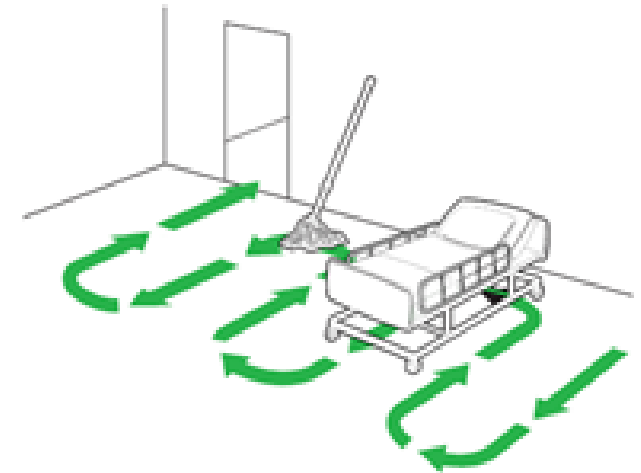
Cleaning steps should be systematic.



Cleaning process should proceed from cleanest to dirtiest spaces (and top to bottom).



Cleaning process should end at the door.



How to Read a Disinfectant Label

Read the entire label.
The label is the law!

Note: Below is an **example** of information that can be found on a disinfectant label

Active Ingredients:
What are the main disinfecting chemicals?

EPA Registration Number:
U.S. laws require that all disinfectants be registered with EPA.

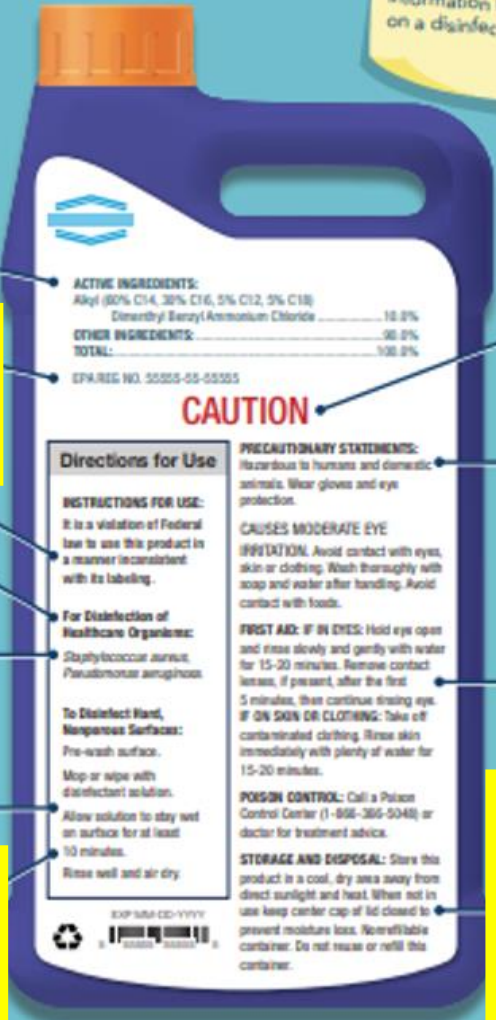
Directions for Use (Instructions for Use):
Where should the disinfectant be used?

What germs does the disinfectant kill?

What types of surfaces can the disinfectant be used on?

How do I properly use the disinfectant?

Contact Time:
How long does the surface have to stay wet with the disinfectant to kill germs?



Signal Words (Caution, Warning, Danger):
How risky is this disinfectant if it is swallowed, inhaled, or absorbed through the skin?

Precautionary Statements:
How do I use this disinfectant safely? Do I need PPE?

First Aid:
What should I do if I get the disinfectant in my eyes or mouth, on my skin, or if I breathe it in?

Storage & Disposal:
How should the disinfectant be stored? How should I dispose of expired disinfectant? What should I do with the container?

KNOW YOUR PRODUCT

- Contact time
- Clean and/or disinfectant
- Dilute
- Storage
- EPA Registration Number

OPPORTUNITIES for **DISINFECTION** ~~DIFFICULTIES~~

- Ineffective disinfectants
 - Removing debris from surfaces first
- Following wet times (contact times)
- Surfaces missed
- Recontamination



The background features abstract geometric shapes in shades of teal and blue. On the left, there is a large teal triangle pointing towards the center. In the upper right, there is a large teal circle with a white center, and a smaller blue circle partially overlapping it. The central area is dominated by a large, light blue rounded shape.

CANDIDA *AURIS*

SPECIFICALLY, CANDIDA AURIS



COMMUNICATION

Know your *C auris* positive rooms and areas



EPA LIST P

List P cleaner
Fastest contact time



ROOM ORDER

Clean *C auris* positive rooms last



1 ENTRY, 1 EXIT

Avoid entering and exiting the room while cleaning



CART CLEAN UP

If possible, designate an EVS cart for MRDO rooms

DISINFECTANT PRODUCTS EFFECTIVE FOR *C. AURIS*

FIRST CHOICE:

List P:
**Antimicrobial
Products Registered
with EPA for Claims
Against *Candida
auris***

<https://www.epa.gov/pesticide-registration/list-p-antimicrobial-products-registered-epa-claims-against-candida-auris>

SECOND CHOICE:

**List K: EPA's
Registered
Antimicrobial
Products Effective
Against *C. difficile*
Spores**

<https://www.epa.gov/pesticide-registration/list-k-epas-registered-antimicrobial-products-effective-against-clostridium>

A young child wearing glasses and a necklace is sweeping a light-colored floor with a broom. The child is positioned in the center of a large, semi-transparent blue circle. In the background, another child is visible, also sweeping. The scene is set in a brightly lit room with white walls and doors.

"Nothing
inspires
cleanliness
more than an
unexpected
guest."

Radhika
Mundra

QUESTIONS?

Communicable Disease Division:
(517) 335-8165

EMAIL:

MDHHS-SHARP@michigan.gov

WEBSITE:

Michigan.gov/HAI

www.healthymichigan.com