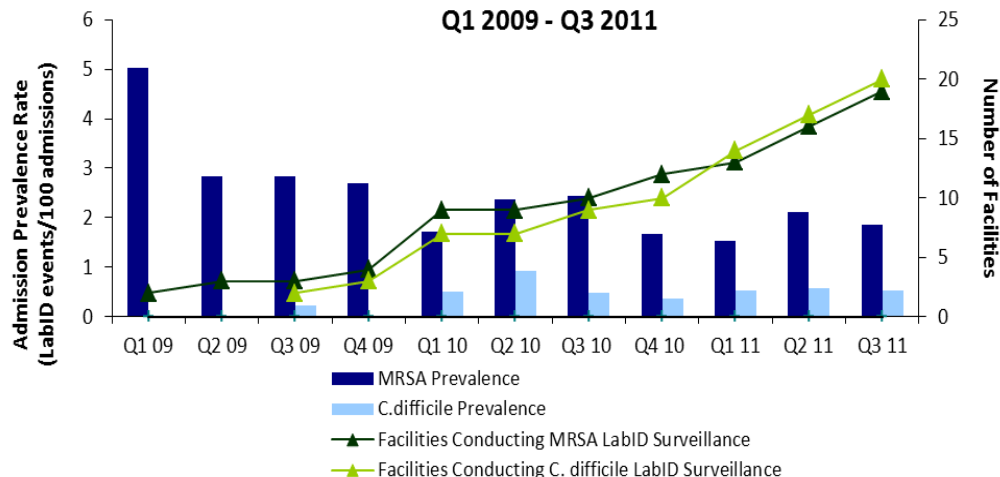


**Indicator Definition:** The number of positive laboratory tests for MRSA and C. difficile. (The data do not distinguish between infection and situations where an organism is present but not causing illness.)

**Indicator Overview:**

- National estimates indicate that approximately one out of every 20 hospitalized patients will contract a Healthcare-Associated Infection (HAI), an infection acquired during the course of medical treatment for other conditions.
- Methicillin-resistant *Staphylococcus aureus* (MRSA) is a bacterial infection that is resistant to certain types of antibiotics. Skin is the most common site for MRSA infections. Lungs, bloodstream, and joints may also be infected. *Clostridium difficile* (C. difficile) is a bacterial infection that may cause diarrhea, colitis, sepsis, or even death.
- The CDC estimates that HAIs, as of 2007, generate between \$35.7 billion and \$45 billion in medical costs per year.

**Methicillin-resistant Staphylococcus arueus (MRSA) and Clostridium difficile (C. difficile) Laboratory-Identified Admission Prevalence Rate, Q1 2009 - Q3 2011**



← **Trends:** This chart represents data from a sample of Michigan hospitals that voluntarily share data with the MDCH Surveillance for Healthcare-Associated & Resistant Pathogens (SHARP) Unit. Admission prevalence rate is equal to the number of first LabID Events per patient, per month identified ≤ 3 days after admission. The number of facilities conducting surveillance continues to grow. Prevalence of MRSA has decreased overall, while C. difficile prevalence rates have been more stable, showing less improvement.

**Links to Other Sources of Information:**

MDCH Surveillance for Healthcare-Associated & Resistant Pathogens (SHARP) Unit: <http://www.michigan.gov/hai>  
 CDC National Healthcare Safety Network (NHSN): <http://www.cdc.gov/nhsn/>

**Links to Related Public Health Programs:**

Michigan’s HAI Surveillance and Prevention Plan: [http://www.michigan.gov/documents/mdch/MI\\_HAI\\_Plan\\_308688\\_7.pdf](http://www.michigan.gov/documents/mdch/MI_HAI_Plan_308688_7.pdf)  
 Methicillin-Resistant *Staphylococcus aureus* (MRSA) Information: [http://www.michigan.gov/documents/mdch/MRSA\\_general\\_347260\\_7.pdf](http://www.michigan.gov/documents/mdch/MRSA_general_347260_7.pdf)  
 Healthy People Information on HAI: <http://www.healthypeople.gov/2020/topicsobjectives2020/overview.aspx?topicid=17>