

### What is Data to Care?

Data to Care (D2C) is a public health strategy that uses HIV surveillance data to identify people with HIV (PWH) who are out of care and reconnect them to medical services.

### Why it matters

D2C strengthens engagement in care, increases viral suppression and helps identify barriers that prevent people from staying in HIV care.

### D2C in Michigan

PWH are out of care (OOC) in Michigan if:

- They had no care labs (CD4, Viral Load, Genotype tests) in 15 months.
- They have been recently diagnosed (<12 months) but do not have labs.

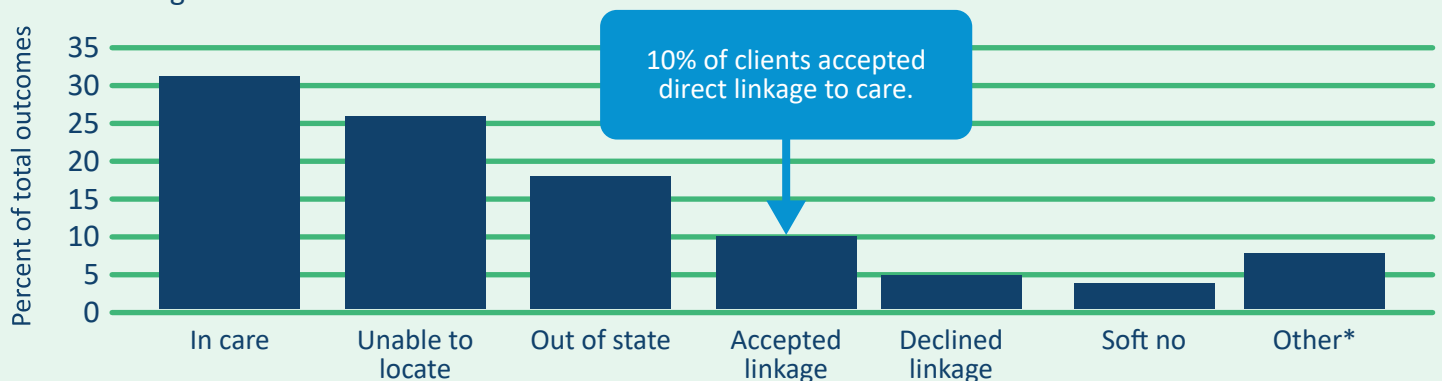
D2C linkage activities are conducted by State of Michigan staff and local health workers from Detroit, Central Michigan and Marquette County Health Departments.

OOC lists are generated twice a year in January and June.

Since 2023, clients appearing on OOC lists three consecutive times without successful contact are excluded from future lists to prioritize those more likely to re-engage in care.

### Data to Care investigation outcomes 2022-2024

From 2022 to 2024, there were 3,256 Data to Care investigations that were successfully closed out across the State of Michigan.



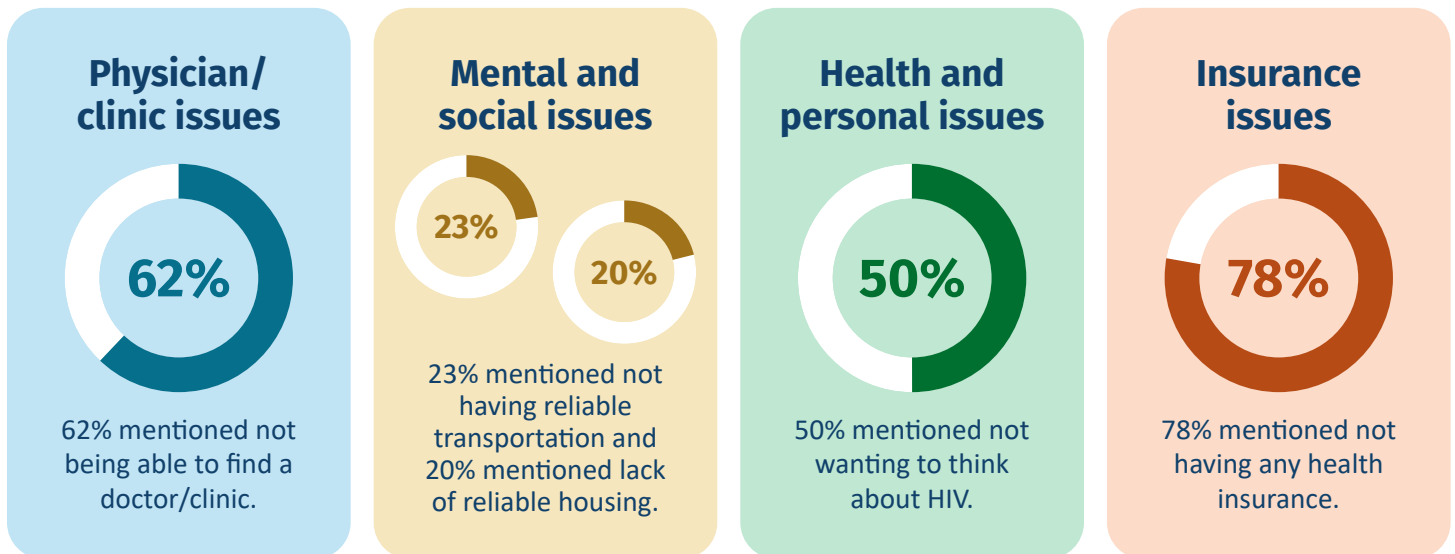
\*Other outcomes include: Data error, Not positive, Do not contact, Deceased, Likely doesn't exist, and Institutionalized.

Clients dispositioned as “In care” were OOC at time of list creation but had re-engaged in care by the time a D2C outreach worker contacted them.

Clients dispositioned as “Out of state” (OOS) are referred to the surveillance team for follow-up to improve the accuracy of Michigan’s HIV surveillance database.

## Barriers to HIV care

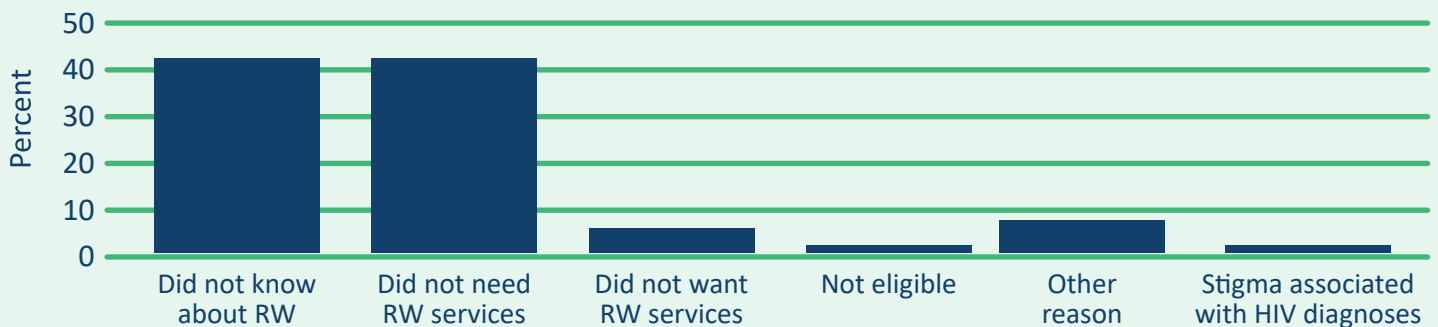
In addition to providing relinkage for OOC PWH, the D2C team identifies and tracks barriers to HIV care for individuals that are OOC. Since 2021, barriers have been collected for 515 (48%) of individuals spoken to. Barriers were separated into four discrete categories: physician/clinic issues, insurance issues, health and personal issues, mental and social issues.



## Ryan White (RW) Utilization

Previous [data analysis](#) determined that enrollment in RW services leads to more successful engagement in long-term HIV care than those who do not use RW services. D2C outreach workers started asking about RW utilization in 2024. Out of the 194 clients asked about RW usage, 77 said “No” or “Don’t know.” Of the 59 who said “No” 96% of these individuals gave a reason for non-utilization.

## Reasons for RW non-utilization



For more information about the Bureau of HIV and STI Programs, please visit:

[Michigan.gov/HIVSTI](https://Michigan.gov/HIVSTI)



Bureau of HIV and STI Programs

MDHHS-Pub-2303 (11-25)

The Michigan Department of Health and Human Services (MDHHS) does not discriminate against any individual or group on the basis of race, national origin, color, sex, disability, religion, age, height, weight, familial status, partisan considerations, or genetic information. Sex-based discrimination includes, but is not limited to, discrimination based on sexual orientation, gender identity, gender expression, sex characteristics, and pregnancy.