

THE STATE OF STIs IN

Michigan,
2022

Syphilis trends show cases increasing most significantly among people who report only heterosexual sex.



43,035
CASES OF CHLAMYDIA
16.5% decrease since 2018



16,374
CASES OF GONORRHEA
3.6% decrease since 2018



2,794
CASES OF SYPHILIS
65.3% increase since 2018



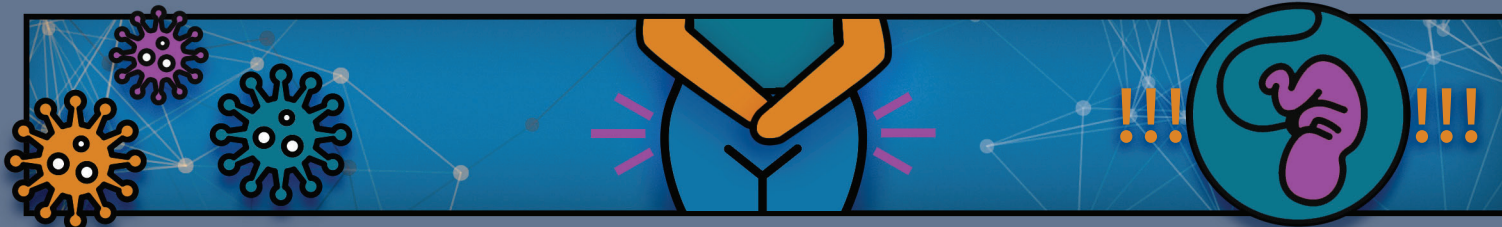
37
CASES OF SYPHILIS
AMONG NEWBORNS
131.3% increase since 2018

LEARN MORE AT: www.cdc.gov/std/

**ANYONE WHO HAS SEX COULD
GET AN STI, BUT SOME GROUPS
ARE MORE AFFECTED**

- YOUNG PEOPLE AGED 15-24
- GAY & BISEXUAL MEN
- PREGNANT PEOPLE
- RACIAL & ETHNIC MINORITY GROUPS

LEFT UNTREATED, STIs CAN CAUSE:



**INCREASED RISK OF GIVING
OR GETTING HIV**

**LONG-TERM
PELVIC/ABDOMINAL PAIN**

**INABILITY TO GET PREGNANT OR
PREGNANCY COMPLICATIONS**

**PREVENT THE SPREAD
OF STIs WITH THREE
SIMPLE STEPS:**

talk | test | treat



**Centers for Disease
Control and Prevention**
National Center for HIV,
Viral Hepatitis, STD, and
TB Prevention