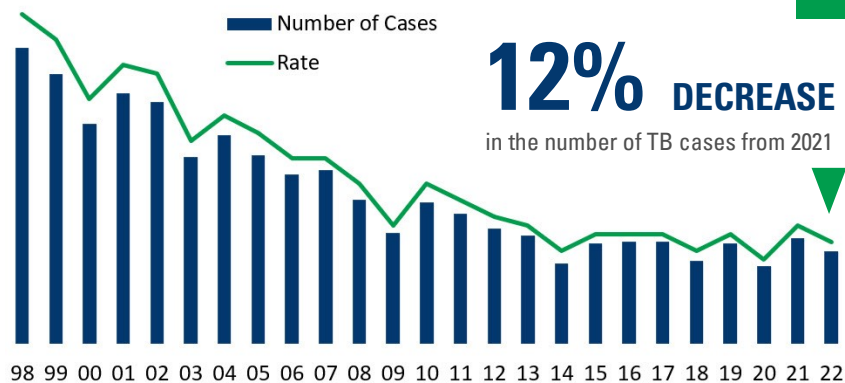


TUBERCULOSIS

IN MICHIGAN, 2022



120 | TB cases verified in Michigan in 2022

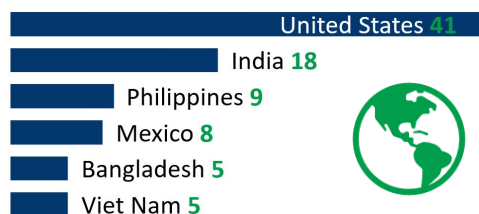
1.2 | TB cases per 100,000 MI residents in 2022

COUNTRY OF BIRTH



32 | Countries of birth represented among patients with TB disease

MOST COMMON COUNTRIES OF BIRTH:



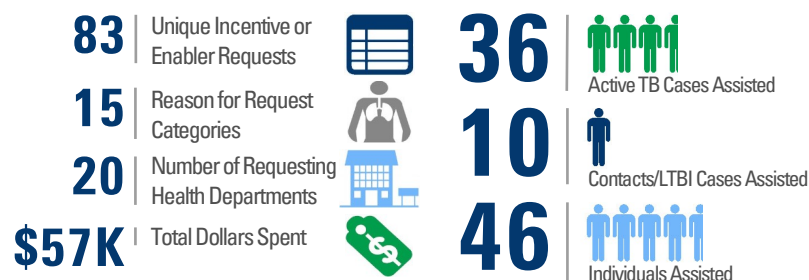
DRUG RESISTANCE

7 | Patients diagnosed in 2022 who had any drug resistance to first-line TB drugs

2 | Patients diagnosed in 2022 who had multidrug resistant (MDR) TB, defined as a TB strain resistant to Isoniazid and Rifampin, the two most important and effective drugs in the TB treatment regimen

3 | Patients diagnosed in 2022 who had Isoniazid mono-resistance

INCENTIVES AND ENABLERS

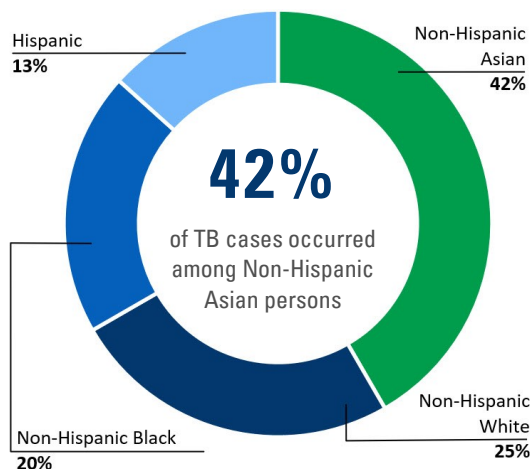
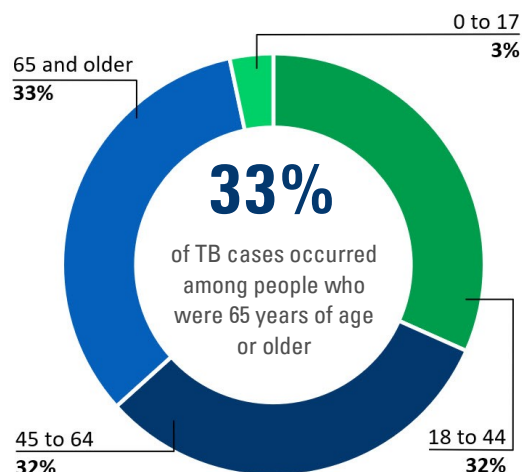


Created March 2023

Adapted from the New York City Bureau of Tuberculosis Control 2017 Annual Summary, p. 5
<https://www1.nyc.gov/assets/doh/downloads/pdf/tb/tb2017.pdf>

DEMOGRAPHIC CHARACTERISTICS

59% of TB cases occurred among males



CLINICAL CHARACTERISTICS

2% | Of patients diagnosed in 2022 also reported with known HIV-positive status

21% | Of patients diagnosed in 2022 also reported as COVID-19 cases

62% | Of patients diagnosed in 2022 reported with a pulmonary site of disease