

## At A Glance

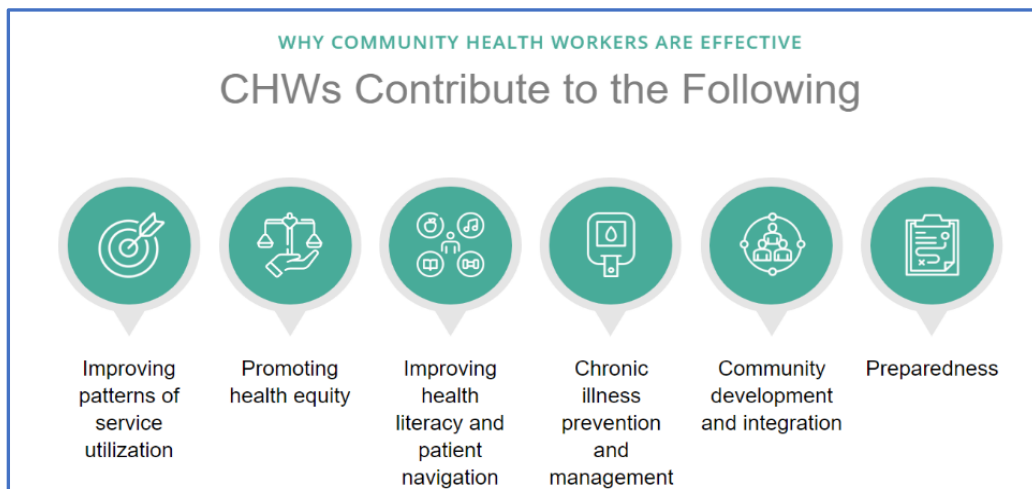
- **Leadership:** MDHHS Behavioral and Physical Health and Aging Services Administration (BPHASA)
- **Beneficiaries:** Medicaid population
- **Overall goal:** Expand Medicaid coverage and reimbursement for CHWs by way of a federal approval path
- **Service Provider:** Community Health Workers
- **Planning Period:** Oct. 1, 2022 – Sept. 30, 2023
- **MI Social Determinants of Health (SDOH) Strategy focus area:** Health equity

## Objectives

The Michigan Medicaid Program is developing formal policy to incorporate CHW services as a fee-for-service recognized benefit to individuals with Medicaid coverage. Ensuring Medicaid beneficiaries have access to culturally responsive services is a key driver for acknowledging CHWs as a trusted connection within the existing service delivery model. The MDHHS BPHASA is engaging stakeholders with its efforts to ensure a diverse perspective is captured to inform and provide recommendations to MDHHS around defining CHW services, qualifications, supervision, and other required policy elements.

## Background

Medicaid is a state and federal partnership. The program is required to follow federal and state laws, rules and regulations including those set forth by the Centers for Medicare and Medicaid Services (CMS). A lack of sustainable funding has traditionally been a barrier to expanding CHW services and integrating them into the health care system. Providing reimbursement through fee-for-service Medicaid is one way to help address this challenge. Michigan’s Comprehensive Health Care Program (CHCP) has implemented contractual requirements that have successfully integrated CHW services in the standard of Medicaid Health Plan care delivery models. Michigan is pursuing efforts to fully incorporate CHWs as a covered service for both managed care and fee-for-service beneficiaries.



MDHHS is a leader in creating opportunities for every Michigan resident to be healthy. The 2022-2024 MDHHS Social Determinants of Health Strategy, [Michigan's Roadmap to Healthy Communities](#), builds upon existing efforts to address the social determinants of health, while achieving greater collaboration and impact. Studies are showing that programs addressing the SDOH are contributing to improved health and reduced health care costs. MDHHS recognizes CHWs as catalysts for promoting health equity, improving

FOR MORE INFORMATION ON HOW EXTERNAL STAKEHOLDERS CAN GET INVOLVED, SEND AN EMAIL TO [MSAPOLICY@MICHIGAN.GOV](mailto:MSAPOLICY@MICHIGAN.GOV).

BUREAU OF MEDICAID POLICY, OPERATIONS, & ACTUARIAL SERVICES - PROGRAM POLICY DIVISION

health outcomes, supporting integration in communities and across settings, and expanding opportunities for care – ultimately addressing SDOH within Michigan communities.

## Engage in Stakeholder Collaboration

MDHHS is currently in the research and development phase of the policy development plan. During this phase, project management principles are utilized to engage both internal working teams and external stakeholders to gather information and data necessary for CHW reimbursement policy development. MDHHS is committed to stakeholder input throughout the process and design of the policy through various methods of engagement as seen in the image below.



## Share Your Experiences

The MDHHS BPHASA has been conducting research on existing national models, connecting with other state Medicaid agencies, and gleaning strategies across a spectrum of stakeholders to broadly inform the approach to formalizing the role of CHWs within the Michigan Medicaid program. External stakeholders’ engagement will provide context to the current landscape, inform policy direction, and highlight potential barriers or unintended consequences associated with specific policy issues. Questions for external stakeholder consideration, include:

1. *What qualifications are leveraged across systems of care for CHWs today?*
2. *What is the scope of services provided by CHWs across systems of care/settings today?*
3. *What is the range of operating costs associated with delivery of CHW services?*

The Michigan Department of Health and Human Services will not exclude from participation in, deny benefits of, or discriminate against any individual or group because of race, sex, religion, age, national origin, color, height, weight, marital status, partisan considerations, or a disability or genetic information that is unrelated to the person’s eligibility.

Spanish	ATENCIÓN: si habla español, tiene a su disposición servicios gratuitos de asistencia lingüística. Llame al 517-284-1018.
Arabic	ملحوظة: إذا كنت تتحدث انكر اللغة، فإن خدمات المساعدة اللغوية تتوافر لك بالمجان. اتصل برقم (رقم هاتف الصم والبكم): 517-284-1018.

FOR MORE INFORMATION ON HOW EXTERNAL STAKEHOLDERS CAN GET INVOLVED, SEND AN EMAIL TO [MSAPOLICY@MICHIGAN.GOV](mailto:MSAPOLICY@MICHIGAN.GOV).

BUREAU OF MEDICAID POLICY, OPERATIONS, & ACTUARIAL SERVICES - PROGRAM POLICY DIVISION