

INFECTIOUS SEQUELAE OF INJECTION DRUG USE

Conditions resulting from injection drug use (IDU):

- **Endocarditis** is the inflammation of the inside lining of the heart chambers and heart valves (endocardium). It is caused by a bacterial or a fungal infection.¹
- **Skin and soft tissue infections (SSTI)** are bacterial or fungal infections of the skin, muscles or connective tissue such as ligaments or tendons.²
- **Sepsis** is the body's extreme response to an infection.³
- **Hepatitis C** is a liver disease caused by the hepatitis C virus (HCV) and can lead to liver problems like scarring and cancer.⁴
- **Human immunodeficiency virus (HIV)** is a virus that attacks cells that help the body fight infection and if left untreated, HIV can lead to the disease AIDS.⁵

TRENDS

This report highlights Michigan's hospitalizations between 2016 and 2024 in persons aged 18 to 64 years that include ICD-10 codes for substance use and codes suggestive of invasive bacterial and fungal infections associated with IDU.

2016-2024

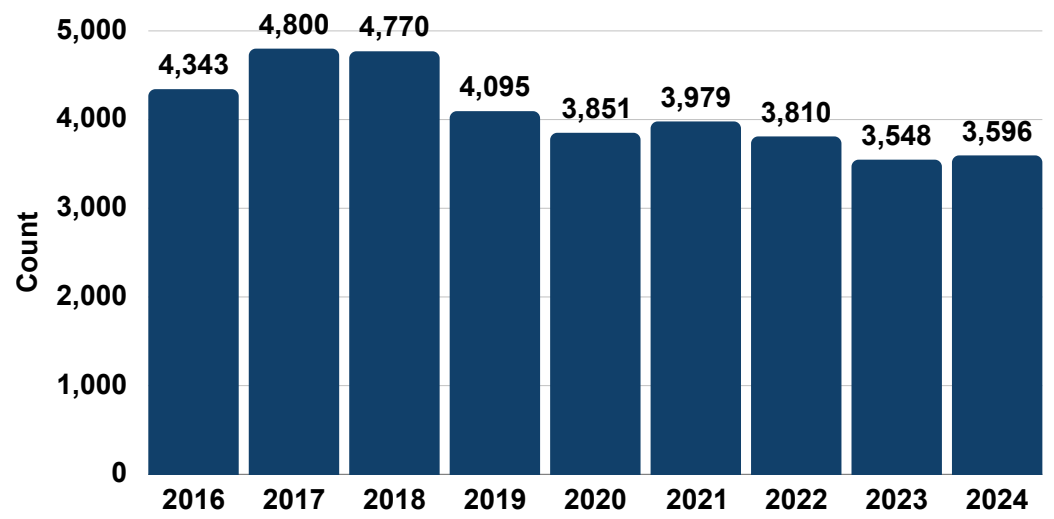
Hospitalizations

There were more than:

⊕ **166,631** IDU-related hospitalizations.

⊕ **2,819** deaths during hospitalization.

Counts of hospitalizations from IDU, Michigan, 2016-2024



CONSEQUENCES

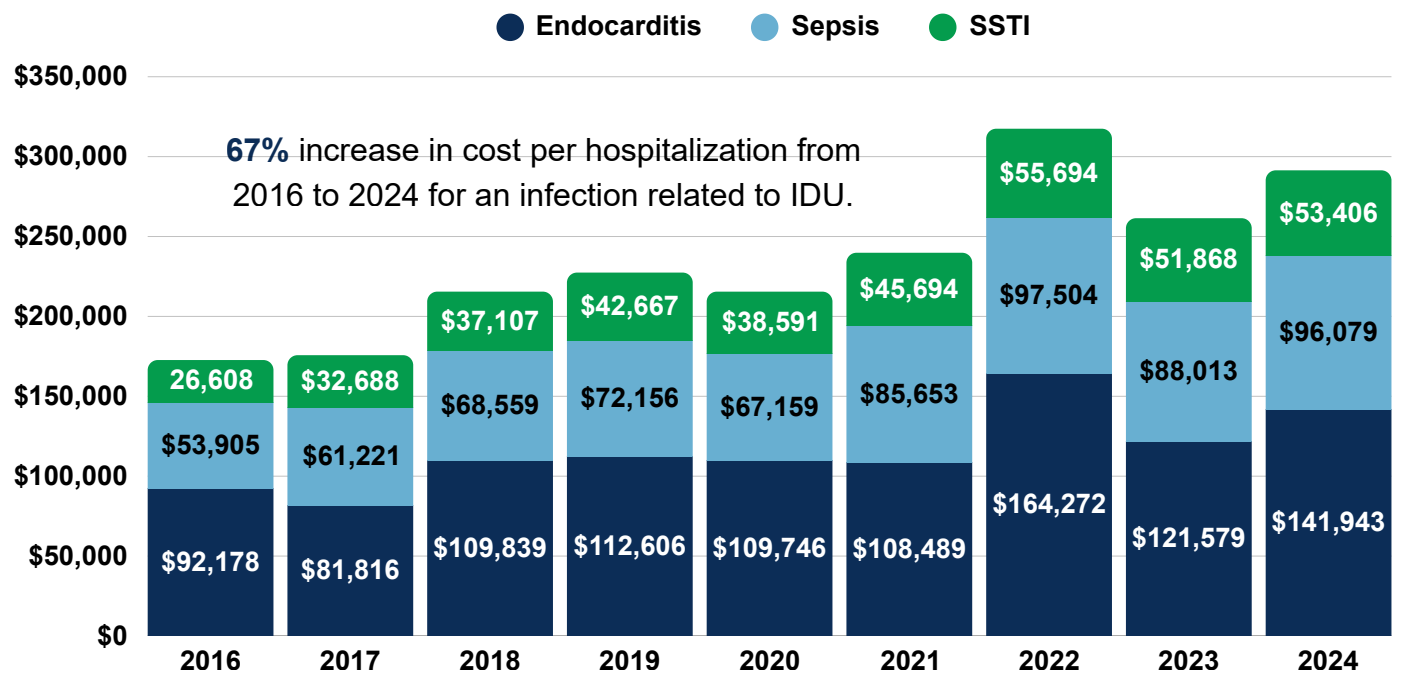
2016-2024

Hospitalizations

⊕ Over **\$2 billion** in health care costs.

⊕ **78%** longer average length of stay compared to non-IDU hospitalizations.

Average cost per event(dollars) for hospitalizations with an infection related to IDU, 2016-2024



PREVENTION

Syringe service programs (SSP) are a harm reduction approach aimed at supporting the health and well-being of individuals who inject drugs.

SSPs provide:



Sterile syringes to reduce syringe re-use and/or sharing.



Opioid overdose prevention education and distribution of naloxone.



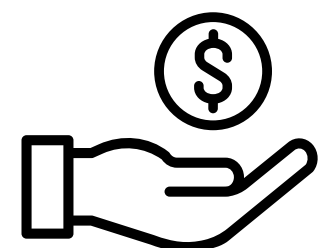
Onsite wound care and safer injection instructions.



Hepatitis C and HIV screening and linkage to care.

Cost of one syringe:

9 cents



To find a SSP near you visit, Michigan.gov/SSP.

For more information visit, Michigan.gov/Hepatitis.



1. <https://www.pennmedicine.org/for-patients-and-visitors/patient-information/conditions-treated-at-pennmedicine>
2. <https://www.pennmedicine.org/for-patients-and-visitors/find-a-program-or-service/infectious-diseases/soft-skin-tissue-infection-ssti>
3. <https://www.cdc.gov/sepsis/about/index.html>
4. <https://www.cdc.gov/hepatitis/c/about/index.html>
5. <https://www.cdc.gov/hiv/about/index.html>