

Summer 2021

# PFAS Research Digest

Updates provided for the [Michigan PFAS Exposure and Health Study \(MiPEHS\)](#) & the [Multi-site Health Study](#) conducted by the Michigan Department of Health and Human Services (MDHHS).



**MiPEHS Phase 1 is ending August 14, 2021. Call 855-322-3037 today to find out if you are eligible and to enroll!**

MDHHS is wrapping up the first phase of MiPEHS on August 14, 2021. By joining now, participants can track their PFAS levels three different times at no charge. They can also receive up to \$155 if they complete all three study office visits.

Anyone interested in joining MiPEHS at Phase 1 must confirm their eligibility and enroll before August 14. You can call 855-322-3037 Monday through Friday, 9 a.m. to 8 p.m. and Saturday, 10 a.m. to 3 p.m.

*Left: Exterior of MiPEHS study office in Parchment/Cooper Township.*

**Over 1,000 people have enrolled in MiPEHS so far!**

As of June 28, 1,175 people are now participating in MiPEHS! There are 629 people from the Belmont/Rockford area and 546 people from the City of Parchment and Cooper Township.

*Right: Blood testing tubes.*



**Ensuring participant safety remains a top priority.**

Due to COVID-19, additional safety precautions are taken such as:

- Limiting the number of people in the study office during appointments,
- Requiring masks for staff and participants, and
- Having participants call the office for a symptom check before entering the building.

*Left: Sign reminding participants to call before entering the building for their appointment.*





## The ATSDR-led Multi-site Health Study is set to launch in September 2021.

The Agency for Toxic Substances and Disease Registry (ATSDR) has partnered with MDHHS to conduct the Multi-site Health Study (MSS) in the City of Parchment, Cooper Township, and the Belmont/Rockford area.

In addition to PFAS exposure, the study will collect information about health, including immune response, kidney function, thyroid disease, liver disease, and diabetes.

Residents likely eligible to join will receive an invitation in the mail or a phone call from the research team.

## Michigan is one of seven sites in the nation contributing to MSS.

MSS is one of the largest PFAS health studies in history! In addition to the Michigan sites, the other locations contributing to MSS include:

- El Paso County, Colorado
- Montgomery and Bucks Counties, Pennsylvania
- Gloucester County, New Jersey
- Hyannis and Ayer, Massachusetts
- Hoosick Falls and Newburgh, New York
- Irvine, California



## There will be a special research focus on mothers and newborns - the Birth Outcomes Supplemental Study (BOSS).

MDHHS was granted additional funding from ATSDR to study how PFAS exposure might affect a mother and baby's health during pregnancy and birth.

Any MSS participant born in Michigan after October 1, 1987 and MSS participants who are mothers of children born in Michigan after October 1, 1987 can join BOSS.

## North Kent County Exposure Assessment

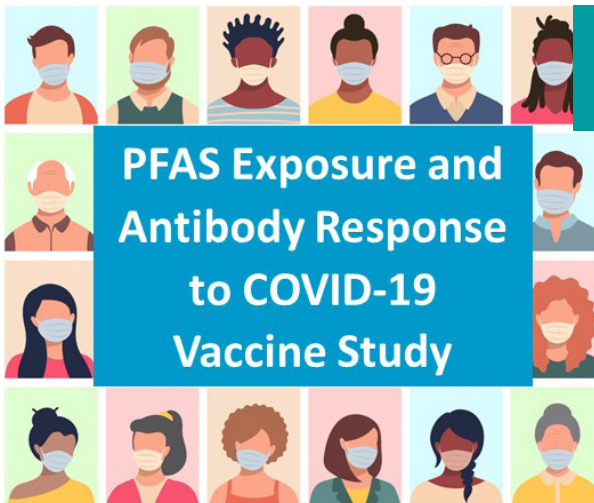
**Did you know about the North Kent County Exposure Assessment? The first report of results is available now.**

The North Kent County Exposure Assessment (NKCEA) is a regional effort studying the relationship between PFAS in drinking water and the amount of PFAS in the human body. The assessment involved collecting blood samples from people in the north Kent County area whose water was found to have PFAS.

Everyone who participated in the NKCEA is strongly encouraged to also participate in Michigan PFAS Exposure and Health Study (MiPEHS) and the Multi-site Study (MSS) if they are eligible!

The first report was released in August 2020, and you can find the report and summary at [Michigan.gov/DEHbio](https://Michigan.gov/DEHbio), located at the top of the NKCEA page. The second report is projected to be released in 2021.

NKCEA was designed to look at the level of PFAS in people's blood. MiPEHS and MSS are the next two steps in the journey and will take an in-depth look at potential health outcomes that may be linked to these PFAS exposures.



**A new study on PFAS exposure and the COVID-19 vaccine launched April 2021.**

MDHHS is conducting a research study to see if PFAS exposure affects how the immune system responds to COVID-19 vaccines, including antibody production. Potentially eligible people are being contacted to participate!

Call 866-558-0732 today to find out if you are eligible and enroll.

**Want to stay up-to-date on MiPEHS, MSS, or other MDHHS environmental health biomonitoring projects? Visit [Michigan.gov/DEHbio](https://Michigan.gov/DEHbio) and click on each project to learn more.**



# PFAS Health Studies Timeline

Michigan PFAS Health & Exposure Study (MiPEHS) and the Multi-site Health Study (MSS)

