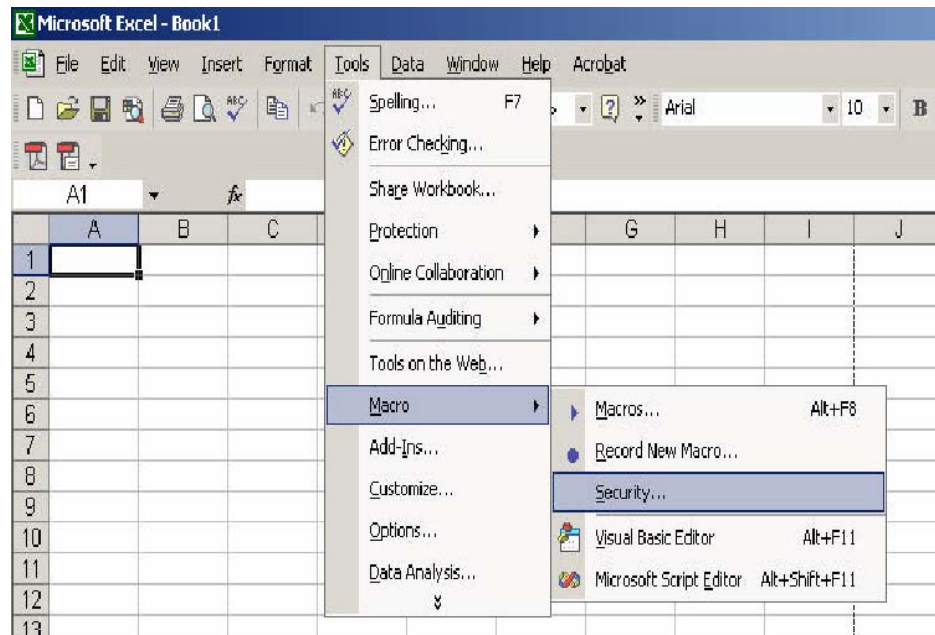


Instructions to use PWL program

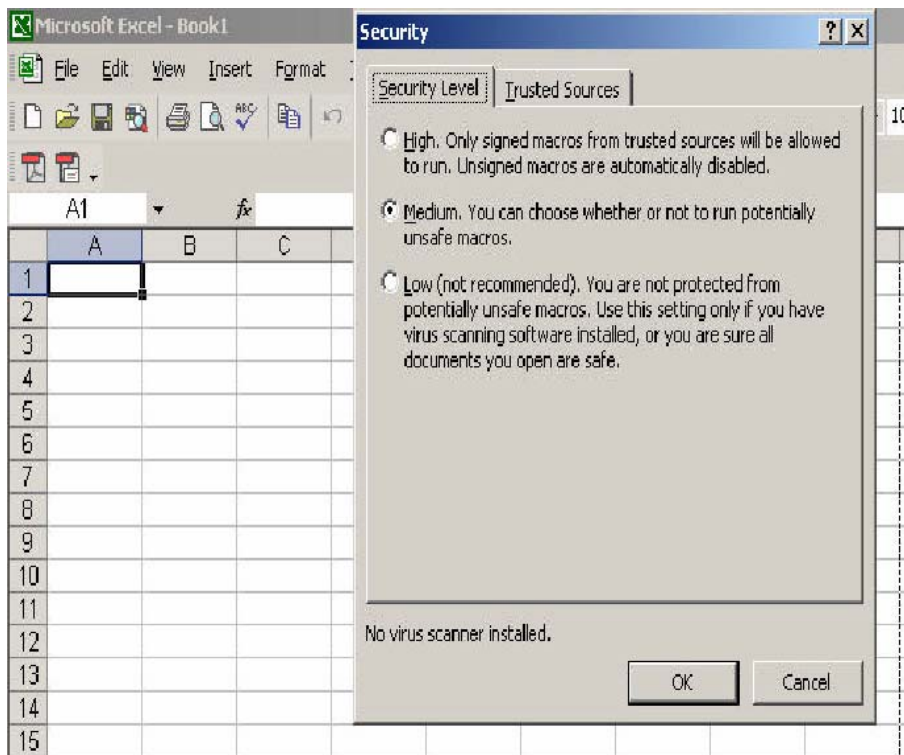
Percent Within Limits (PWL) is a replacement specification for the current Furnishing and Placing specification that is in current use. PWL is a statistical method of acceptance. The specification utilizes an excel based spread sheet for pay calculations.

In order for the spread sheet to operate correctly the user needs to check two things in excel:

1. Since the spread sheet contains macros the user needs to set excels security for macros to Medium or Low. Medium is the preferred setting since this still gives the user an opportunity to turn them off.

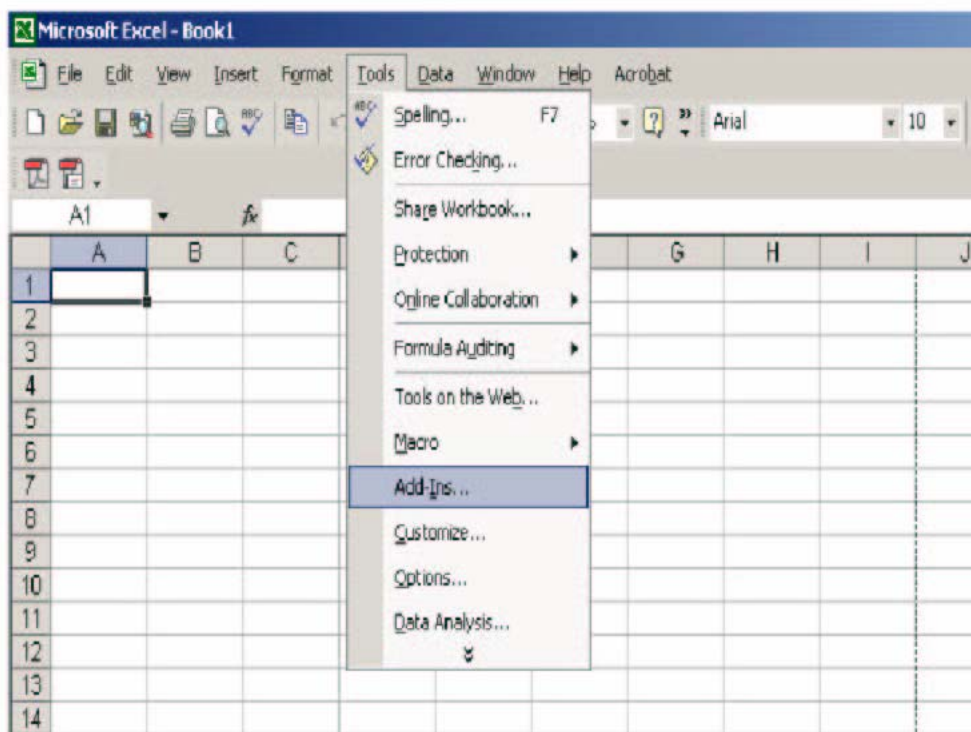


- a. To do this, go to Tools, Macro then Security.
- b. In the Security window click on the Security Level tab. Then select either Medium or Low

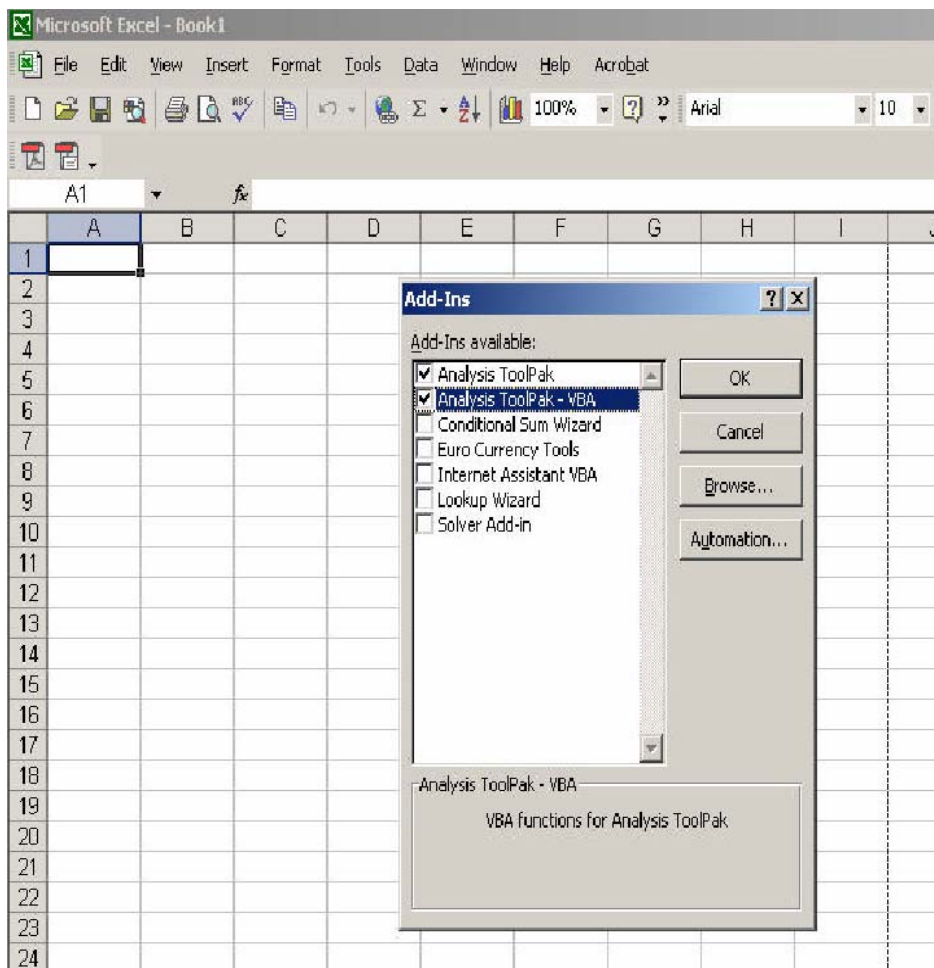


2. The other thing that is needed is the installation of two Add-Ins, analysis ToolPak and analysis ToolPak VBA

a. To install these Add-Ins, go to Tools then Add-Ins.



b. In the Add-Ins window if there is not a check mark in the box next to Analysis ToolPak and or Analysis ToolPak – VBA, click on these boxes so that a check mark appears.



After doing this save and close excel.

If you have any questions, contact Nathan Maack in the HMA Technical Services Unit at Construction Field Services.

Phone: (517) 322-1184
maackn@michigan.gov