









US-41 AND M-26 LIFT BRIDGE IMPROVEMENTS OVER PORTAGE LAKE

Construction Manager/General Contractor Project

Houghton and Hancock

Michigan Department of Transportation | Superior Region

April 25, 2025

1	Safety Minute and Introductions		2
2	Project Location		4
3	Project Summary, Goals, Risks		5-14
4	Project Coordination		15
5	Project Schedule		16
6	Pre-Qualifications		17



Working in cold weather:

Cold Stress

- Cold stress occurs when the body can no longer maintain a healthy temperature due to prolonged exposure to the cold.
- Symptoms include shivering, numbness and fatigue. If the symptoms are ignored, they can lead to frostbite or hypothermia.
- Wear protective clothing such as multiple layers, warm gloves and hats to stay warm.
- If possible, try to provide some sort of warm area where people can warm up and get a break from the cold.

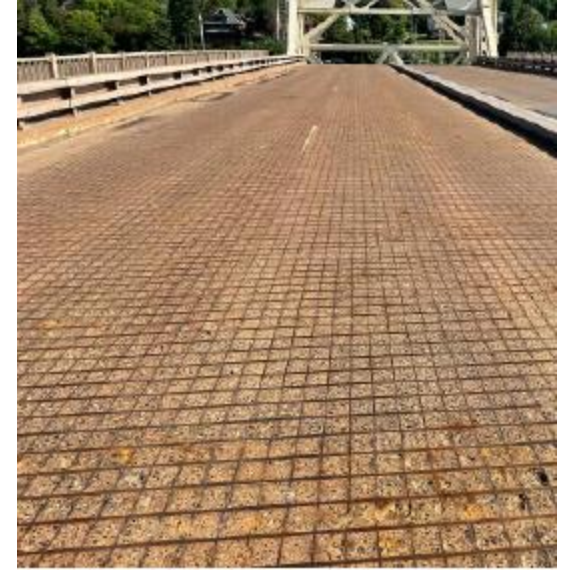
Slippery Conditions

- Ice and snow lead to slippery conditions for both people and motorists.
- Pay more close attention to where you step and how you are moving to avoid slips and falls while working in slippery conditions.
- Be aware that vehicles have reduced visibility in snow conditions and are more prone to crashes, so use additional caution when working near traffic.



Structural Scope of Work

- Replace upper and lower grid decks on the lift span
 - The upper level is concrete-filled grid
 - The lower level is open grid
- Replace all stringers and lateral bracing on the lift span
- Replace the north fixed span deck
- Cleaning and coating structural steel
- Bolted steel repairs for the end floor beams at the finger joints



View of Upper Grid Deck



View of Lower Grid Deck



Structural Scope of Work (continued)

- Pier pile cluster and pier fender repair
- Replace strip seal joints on piers 3 and 8
- Replace abutment joints
- Replace south approach curb and gutter
- Deck, sidewalk and substructure patching
- Stairway replacement
- Handrail replacement



Pier Pile Cluster



Mechanical Scope of Work

- Replace SE machinery brake thrustor.
- Replace non-desiccant breather plugs with desiccant breathers on the reducers.
- Replace lockbar sleeves with shimmable receiver assemblies with grease ports and self-lubricating material.
- Improve span lock receiver metal work and surrounding truss work.
- Adjust counterweight guides to minimize contact with the guide rails.
- Span balancing.



Electrical Scope of Work

- Upgrade to full PLC control

ITS Scope of Work

- Overhead vehicle detection system



Minimize travel impact on the public and marine traffic.

Maintain multimodal traffic throughout the project, including one lane in each direction, marine traffic, pedestrians, bicyclists and snowmobiles.





Complete all work as efficiently as possible through coordinated staging to avoid complications or delays in the construction season.

Schedule construction operations to maintain operational functionality of the bridge.

Maintain reliable bridge operations.



Safety: Provide a safe work area for the traveling public and all workers.

Quality: Provide the highest quality final product possible to minimize future maintenance needs.



Budget: Complete the project within the MDOT-approved budget.



Schedule: Meet or exceed the planned schedule.

Minimize environmental impacts and follow all environmental restrictions.

Schedule: Evaluate schedule for procurement and work task durations to avoid delays.

Environmental: The bridge is a nesting site for endangered falcons. Work above the deck level is restricted to specific dates.

Permits: An EGLE and USACE permit will be required for work in the water and any corresponding requirements will need to be followed.



Local Coordination

- Coordination with local emergency services, local agencies, Houghton and Hancock communities, local airport, and Michigan Technological University.

Coast Guard Coordination

- Coordination with the Coast Guard will be required for work in the channel or any times that affects the span operation.

Design Team Coordination

- Hardesty & Hanover, Hennessey Engineering, and MDOT.



Project Schedule

2025

Issue RFQ
May 2025

Award
July 2025

Prelim Design
October 2025

SOQs Due
June 2025

2026

OPCC
May 2026

Letting (if needed)
November 2026

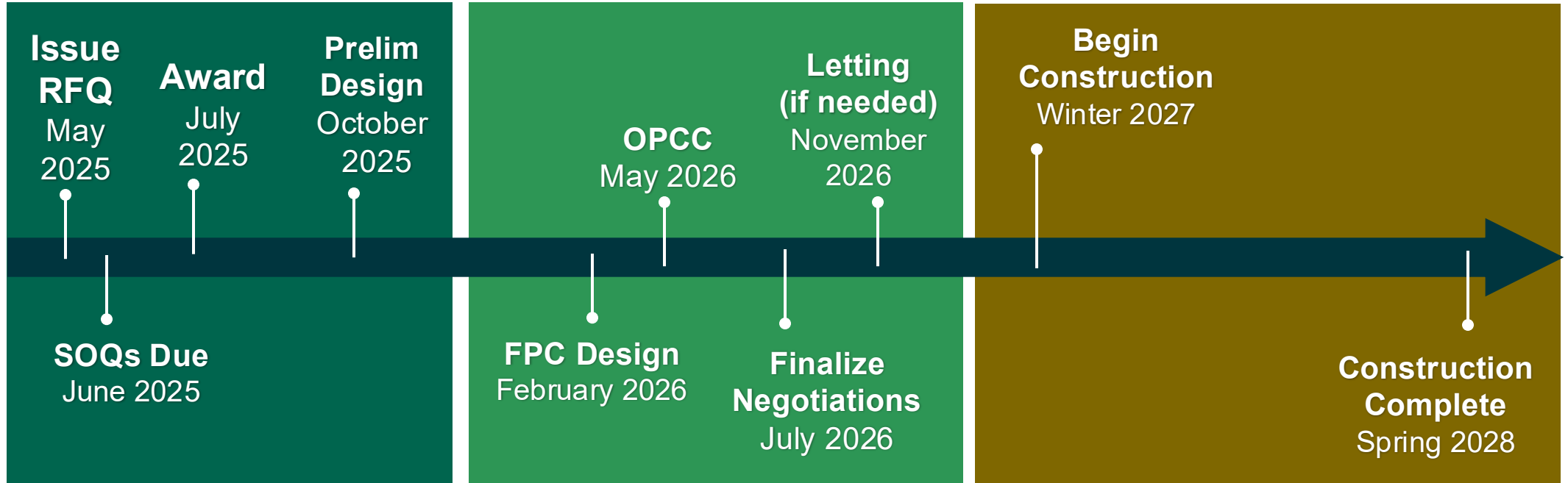
FPC Design
February 2026

Finalize Negotiations
July 2026

2027-2028

Begin Construction
Winter 2027

Construction Complete
Spring 2028



Industry Outreach

- Industry forum presentation and sign-in sheet posting.
- One-on-one meetings as requested.
- Check Innovative Contracting website for updates.

Non-Disclosure Agreement (NDA)

- Required prior to access to RID files or site visit.
- Email BelillT@Michigan.gov to submit NDA.

Site Visit

- NDA and visitor liability disclaimer required.
- No questions during the visit.
- Limit photos to specific areas of work.





**Anticipated Construction
Pre-qualifications:**

36000 Fa (Bridges and
Special Structures)



**Disadvantage Business
Enterprise (DBE) Goal:**

Preconstruction 0 percent
Construction TBD



Key Staff:

- Project Manager
- Project Supervisor
- Cost Estimator
- Mechanical Lead
- Electrical Lead
- Civil Rights Manager





Off-Ramping: Letting as a traditional design-bid-build if CMGC negotiations are not successful.

Project Specific Qualifications Selection: Allow only highly qualified contractors to bid on the project.

SOQ Minimum Score: Anticipate using a Statement of Qualifications minimize score to qualify to submit a bid.

Open Discussion – Q&A



Houghton Hancock Lift Bridge CMGC Industry Forum Attendance

April 28, 2025 9:00am - 10:00am

Name	Company
Loren Mitseff	MDOT
Alan Anderson	MDOT
Mark Barkowski	Kiewit
Nick Baker	Anlaan
Mark Olsen	Lunda Construction
Jacob Heinz	Barnard
John Krinke	Michels
Pete Tornes	Milbocker
Steve Vlahakis	Seaway Painting
Ernie Dunbar	Civil Coatings
Thomas Deschaine	MDOT
Talia Belill	MDOT
Robert Tervo	MDOT
Ben Edwards	C.A. Hull
John Belcher	MDOT
Adam P. Gerondale	Lunda Construction
Jordan Robbins	PCL
Matthew Beatty	MDOT
Tim Mulvihill	Toebe
Dan Kroll	Toebe
Peter.Maglicic	Kiewit
Brad R. Diener	Lunda Construction
Jeff Triezenberg	MDOT
Scott Stroud	Zenith Tech
Nate Verseput	Anlaan
Ben Carrigan	MDOT
Dave Fischer	Toebe
John W Kersaan	Grand River Construction
David Stanke	Kraemer
Brian Bellfi	Kraemer
Bob Beckel	Kraemer
Jeremy Vanlerberg	Hardesty & Hanover
Daniel Machamer	Hardesty & Hanover
Peter Vogt	Kiewit
Chris DeRoo	Kiewit
Joshua Salazar	HDR
Brandon Hinson	PCL
Brent Freeman	Kraemer
Bob Jones	RS&H
Steve Funck	Toebe
Warren Howard	Kiewit
Rachel Dombrowski	Toebe
Jay Desai	C.A. Hull

Houghton Hancock Lift Bridge CMGC Industry Forum Attendance

April 28, 2025 9:00am - 10:00am

Name	Company
James Ranger	MDOT
Andrew Standhardt	Toebe
Ken Filpus	MDOT
Devlin Huhta	Zenith Tech
Joel Christopherson	Zenith Tech
Matt Longfield	HDR
Raphael Costa	HDR
George Atsalakis	Atsalis
Bill Muzika	Michels
Mike Atsalakis	Atsalis
John Tsahas	Civil Coatings
Casey Potts	RS&H
Travis Schreiner	Zenith Tech
Travis Kaess	RS&H
M. Wakley	MDOT